

BASIS OF BEARING

True geodetic North at the Southwest corner of Section 19, Township 1 North, Range 35 East of the Willamette Meridian, as determined by GPS observation

SCALE: 1" = 600'

LEGEND

- Found monument as described
- ⊙ Set 2 1/2" aluminum pipe with 2 1/2" aluminum cap marked as per Umatilla County Monumentation Records, filed separately
- Set 5/8" rebar with 2 1/2" aluminum cap, marked as per Umatilla County Monumentation Records, filed separately
- () Record measurement as per GLO Contract dated May 4, 1887, executed by Noland and Currin
- { } Record measurement as per Survey Number M-045-C
- [] Record measurement as per Survey Number 08-145-B
- x— Existing Fenceline

Searched for, not found.

TRISTAR

Found NE bearing tree. GLO notes do not specify a distance from the tree. Used the intersection of record bearing from the tree and the extension of an old downed E/W running fenceline. Corner falls in the Northeast edge of a gravel road. Old rock jack fence corner bears South 85° East, a distance of 20.5 ft.

Searched for, not found. Used proportionate position.

WHEELHOUSE

Found 1 1/2" iron pipe with 2" brass cap, set by Survey Number M-045-C, North 85°36'09" West, a distance of 21.55 feet from true corner position. East/West fenceline falls 35 feet South of corner monument.

Found 10"x8"x6" stone marked 1/4 on West face. Replaced with 2 1/2" aluminum pipe and cap marked as per Umatilla County monumentation records, filed separately.

Fence corner bears 99.8 feet West and 10.3 feet South of corner monument.

Fence corner falls 26.5 feet West and 6.4 feet South of corner monument.

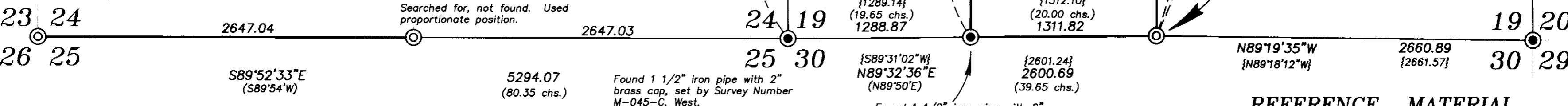
Found 1 1/2" iron pipe with 2" brass cap, set by Survey Number M-045-C, North 87°08'17" West, a distance of 23.97 feet from true corner position.

Found remnants of wood lath at record distance from W 1/16 corner monument set by M-045-C. A stump hole fits the Northwest bearing tree position. Accepted lath position as best available evidence of the original corner position.

Found 5/8" iron pin with aluminum cap in a collar of stone, set by Hollingsworth in Survey Number S-124-B

Corner position as per survey number 08-145-B falls in East edge of gravel road. Monument has been removed. Established position by references and set a 5/8" x 30" iron rebar with 2 1/2" aluminum cap, marked as per Umatilla County Monumentation Records, filed separately.

RANGE 34 EAST
RANGE 35 EAST



NARRATIVE

This survey was done at the request of Steve McClelland, on behalf of Hancock Forest Management, land manager for Tristar Northeast Oregon Timberlands, owner of the land within. Mr. McClelland wanted the lines shown hereon monumented in preparation for a timber sale. I recover the monuments as shown hereon. Section 19 was broken by Chris Palmer in Survey Number M-045-C (also filed as 03-274-C), where he monumented the Southwest quarter of the Southwest quarter. He did not set monuments at locations that he found original GLO evidence. Since his survey, the East quarter corner was found by Hollingsworth in Survey Number 88-11-B, the North quarter corner was found by Haddock in Survey Number 08-145-B and I found the original West quarter corner in the course of this survey. The interior sixteenth corner positions set by the Palmer survey, are therefore in error. The South quarter corner position was established by Palmer from original GLO evidence, but not monumented. I find no remaining evidence at the calculated position of original GLO evidence. I do however find remnants of a wood lath at record bearing and distance from Palmer's W 1/16th corner, which I believe to be set by Palmer. A stump hole occupies the position at the Northwest bearing tree position. I accept this lath as the best remaining evidence. I divide Section 19 as per BLM Manual of Instructions 2009. At the corner common to Section 23, 24, 25 and 26 of Range 34 East, I find the original Northeast bearing tree. Unfortunately, the original GLO notes do not mention the distances from the bearing tree accessories at this corner. Remnants of a fence exist in this area, running roughly East and North, and I place the section corner by intersecting the apparent extension of the East/West running portion of this fence and the bearing from the bearing tree. I find no remaining evidence at the South 1/4 corner of Section 24, although remnants of an East/West running fence can be seen Westerly of this corner. The wire is down and in disrepair but falls relatively close to the section line in this area. I find no other unusual conditions with this survey.

REGISTERED
PROFESSIONAL
LAND SURVEYOR

OREGON
JUNE 2, 2010
JEFFREY S. HSU
83571

Renewal Date: June 30, 2015

Umatilla County Monumentation Records
Survey Number M-045-C
Survey Number M-105-A
Survey Number 03-274-C
Survey Number S-124-B
Survey Number 88-11-B
Survey Number 08-145-B
Partition Plat 1996-25
Partition Plat 2008-17
Field Notes from GLO Contract dated May 4, 1887, executed by James P. Currin and James E. Noland

DEED REFERENCES
Reel 284 Page 0005
Reel 267 Page 1015
Book 140, Page 382
Book 231, Page 690
Micofilm Document Number 2008 5400083

BAGETT, GRIFFITH & BLACKMAN
2006 Adams Avenue, LaGrande, Oregon
Map of Survey

Situate in Section 19, Township 1 North, Range 35 East and Section 24, Township 1 North, Range 34 East of the Willamette Meridian

UMATILLA COUNTY, OREGON

SURVEYED FOR	Hancock Forest Management
SURVEYED BY	J. S. H.
Scale: 1" = 600'	Drawn by: J. S. H. Aug/Sept 2013

RECEIVED BY
Umatilla County Surveyor
Date: 9/20/2013
Recd By: Jay Johnson
No.: 13-521-B