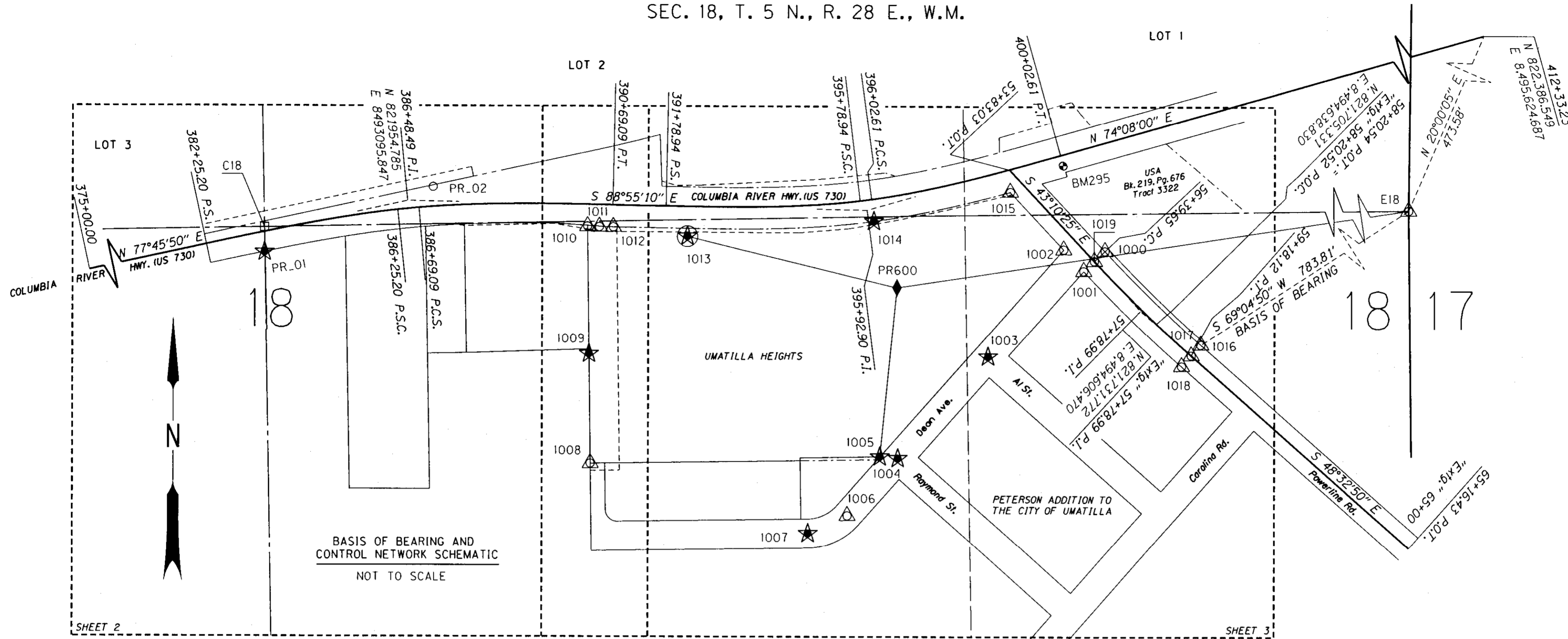


SEC. 18, T. 5 N., R. 28 E., W.M.



NETWORK CONTROL & RECOVERED MONUMENTS

PT. NO.	LDP NORTHING	LDP EASTING	DATE	DESCRIPTION & REFERENCE DOCUMENTS
C18	821,900.205	8,492,801.278	01/14/13	CENTER OF SECTION IS A CALCULATED POINT.
E18	821,941.536	8,495,462.703	01/14/13	FOUND 2 1/2" DIA. BRASS DISK MARKED "T5N R28E, 1/4 18 17, 1990, LS 951", (CS 98-101-C)
1000	821,853.913	8,494,532.937	01/14/13	FOUND 5/8" IRON ROD WITH YELLOW CAP, MARKED "LS2627", (CS 98-55-C)
1001	821,812.842	8,494,489.238	01/14/13	FOUND 5/8" IRON ROD WITH CAP MARKED "UMA. CO. RD.", (CS 98-55-C)
1002	821,856.935	8,494,447.920	01/14/13	FOUND BENT PIPE, (NOTED ON CS M-77-B)
1003	821,636.257	8,494,292.621	01/14/13	FOUND PK NAIL IN PIPE, BENT, (NOTED ON CS 98-55-C)
1004	821,426.774	8,494,107.062	01/14/13	FOUND PK NAIL
1005	821,430.246	8,494,070.061	01/14/13	FOUND 5/8" IRON ROD W/YELLOW CAP LS2817
1006	821,309.123	8,494,003.132	01/14/13	FOUND ALUMINUM DISK AT CENTERLINE DEAN AVE., DISK NOT LEGIBLE, (UMATILLA HEIGHTS)
1007	821,272.142	8,493,922.229	01/14/13	FOUND ALUMINUM DISK AT CENTERLINE DEAN AVE., MARKED, "02817", (UMATILLA HEIGHTS)
1008	821,415.756	8,493,473.409	01/14/13	FOUND 5/8" IRON ROD W/YELLOW CAP LS2817, (UMATILLA HEIGHTS)
1009	821,641.124	8,493,470.294	01/14/13	FOUND 1/2" IRON ROD, (CS M-77-B)
1010	821,903.161	8,493,466.944	01/14/13	FOUND 1/2" IRON ROD, BENT, (CS M-77-B)
1011	821,901.970	8,493,491.257	01/14/13	FOUND RR SPIKE IN PAVED APPROACH, (PPLAT 1998-43)
1012	821,901.632	8,493,520.055	01/14/13	FOUND 5/8" IRON ROD W/YELLOW CAP, BENT, (PPLAT 1998-43)
1013	821,883.002	8,493,673.124	01/14/13	FOUND SET T-POST NET PT. "BRIDGE" US 730 PROJECT (CS 13-206-B)
1014	821,914.125	8,494,056.799	01/14/13	FOUND IRON ROD W/YELLOW CAP, BENT, (UMATILLA HEIGHTS)
1015	821,974.595	8,494,337.469	01/14/13	FOUND IRON ROD, BENT, NO CAP, (PPLAT 1998-43)
1016	821,661.670	8,494,730.556	01/14/13	FOUND 5/8" IRON ROD W/CAP MARKED "UMA. CO. RD." PIN IS BENT, LS2627", (CS 98-55-C)
1017	821,639.530	8,494,710.905	01/14/13	FOUND RR SPIKE IN POWERLINE RD. AC, (CS 98-55-C)
1018	821,616.927	8,494,690.917	01/14/13	FOUND 5/8" IRON ROD W/CAP MARKED "UMA. CO. RD." LS 2627, (CS 98-55-C)
1019	821,833.390	8,494,511.133	01/14/13	FOUND RR SPIKE IN POWERLINE RD. AC (CS 98-55-C)
PR_01	821,849.133	8,492,801.542	01/14/13	FOUND 2 1/2" BRASS CAP WITNESS CORNER MARKED, "UMATILLA COUNTY SURVEYOR" (CS H-214-B)
PR_02	821,983.536	8,493,148.438	01/14/13	SET NAIL IN ROADWAY SHLD.
PR600	821,778.141	8,494,104.868	01/14/13	SET 8" NAIL
BM295	822,029.152	8,494,446.321	01/14/13	FOUND 1" DIA. BRASS DISK IN GOOD CONDITION AT THE WEST END FO THE UMATILLA RIVER BRIDGE, IN THE WINGWALL ON THE SOUTH SIDE OF U.S. 730. BENCHMARK ELEV. = 298.81 FT.

THE PURPOSE OF THIS SURVEY IS TO RESOLVE THE LOCATION OF THE EXISTING RIGHT-OF-WAY (R/W) FOR A PORTION OF THE COLUMBIA RIVER HIGHWAY AND POWERLINE ROAD (CO. RD. NO. 1225) IN THE CITY OF UMATILLA, OREGON. FOR THIS PURPOSE WE ESTABLISHED A CONTROL NETWORK AND RECOVERED THE POSITION OF MONUMENTS OF RECORD. THIS SURVEY WAS DONE IN PREPARATION FOR THE US730 @ POWERLINE ROAD SECTION TO BE ADMINISTERED BY THE OREGON DEPARTMENT OF TRANSPORTATION (ODOT).

THIS SURVEY HELD THE POSITION OF THE POINT OF CURVATURE (PC) AND POINT OF TANGENCY (PT) FROM COUNTY SURVEY (CS) 98-55-C AS MONUMENTED BY POINTS 1017 AND 1019 TO ALONG WITH THE RECORD RADIUS OF 2969.21 FEET FROM SAID SURVEY TO LOCATE THE CENTER LINE OF POWERLINE ROAD. THE STATIONING FOR POWERLINE ROAD WAS ASSUMED AT 56+39.65 PC.

THE CENTER LINE OF THE COLUMBIA RIVER HIGHWAY WAS LOCATED BY DATA FROM RECORD CURVE DATA AND STATIONING SUPPLIED BY ODOT DRAWING 11B-5-3 AND CS 13-206-B, USING MONUMENT 1010 AS A COMMON POINT.

THE BASIS OF BEARING WAS ESTABLISHED BY GPS WITH A BASE BEARING OF S.69°04'50"W. 783.81 FEET FROM THE EAST 1/4 S.18 TO MONUMENT 1016. THIS SURVEY UTILIZES A LOCAL DATUM PLANE (LDP) THAT IS RELATIVE TO THE OREGON COORDINATE SYSTEM (OCS) OF NAD 83 (2011) EPOCH 2010.00, WITH RESPECT TO THE LOCAL LATITUDE AND GROUND ELEVATION. THE LDP COORDINATES DEFINE ACCURATE GROUND DISTANCES. TO CONVERT LDP COORDINATES TO THE OREGON COORDINATE SYSTEM OF NAD 83 (2011) EPOCH 2010.00, NORTH ZONE, MULTIPLY LDP COORDINATES BY 0.99995160.

RECEIVED BY  
 Umatilla County Surveyor  
 Date: 8/29/2014  
 Rec'd By: G. Hensley  
 No.: 14-120-B

**LEGEND**

	OPUS POINT AS NOTED		REFERENCE DOCUMENTS
	FOUND MONUMENT USED AS GPS NETWORK POINT		1/16 SECTION LINE
	SET GPS POINT		1/4 SECTION LINE
	SET STRATEGIC POINT		RIGHT-OF-WAY
	FOUND BENCHMARK		PROPERTY LINE
	FOUND MONUMENT		EXISTING EASEMENT LINE
	CALCULATED POINT		ABAND RAILROAD RW
			CENTER LINE
			OBSERVATION LINES

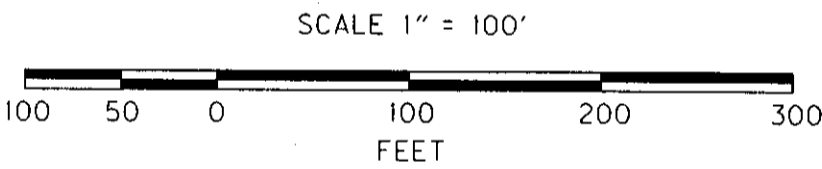
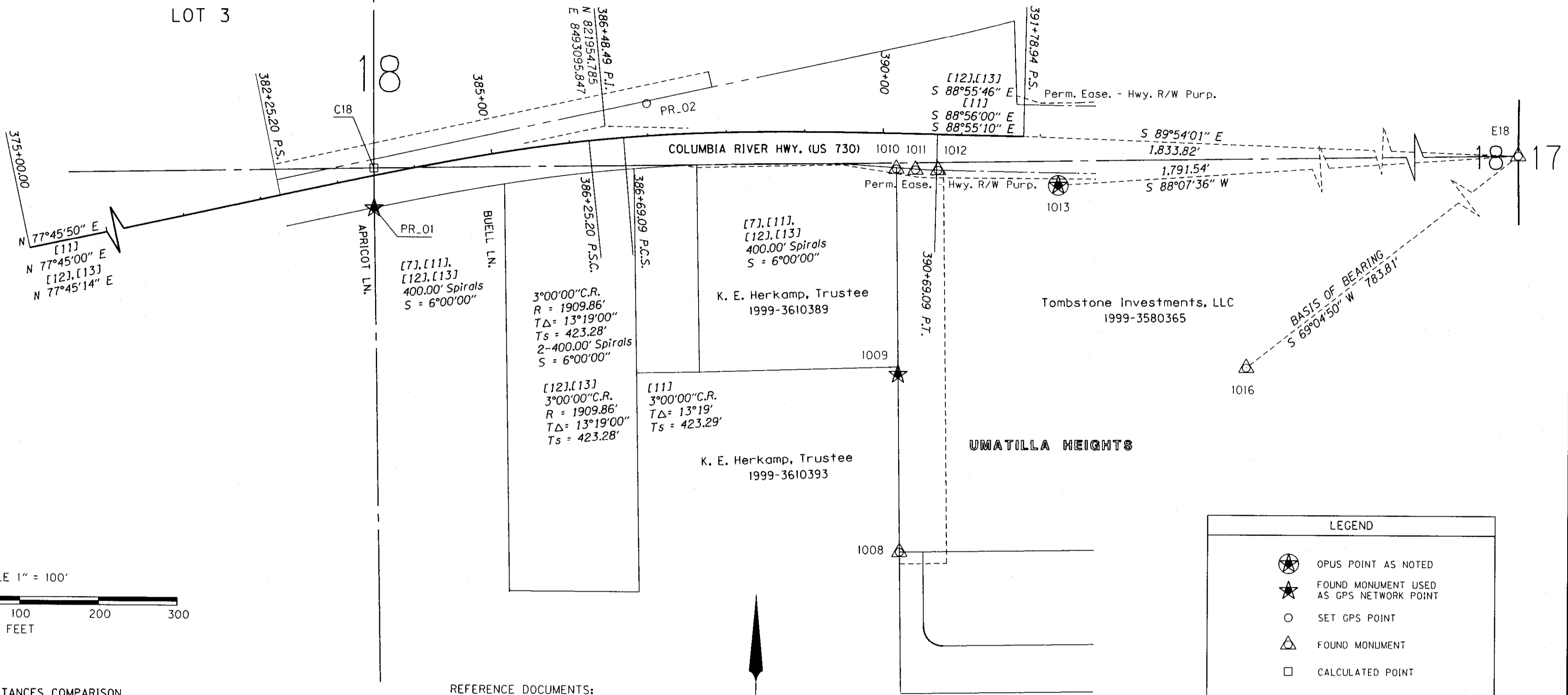
- REFERENCE DOCUMENTS:
- [1] CS H-214-B
  - [2] CS M-77-B
  - [3] CS 83-201-B
  - [4] CS 91-01-B
  - [5] CS 98-55-C
  - [6] CS 10-110-B
  - [7] CS 13-206-B
  - [8] PPLAT 1998-43
  - [9] UMATILLA HEIGHTS
  - [10] PETERSON ADDITION
  - [11] ODOT DRG. NO. 8B-18-21
  - [12] ODOT DRG. NO. 11B-5-3
  - [13] ODOT DRG. NO. 11B-7-15

REGISTERED PROFESSIONAL LAND SURVEYOR  
*Robert E. Butler*  
 OREGON  
 JULY 25, 1995  
 ROBERT ERICH BUTLER  
 2733  
 EXPIRES: 12/31/15

OREGON DEPARTMENT OF TRANSPORTATION  
 HORIZONTAL CONTROL AND RECOVERY MAP  
 U.S. 730 @ POWERLINE ROAD SEC.  
 CITY OF UMATILLA  
 COLUMBIA RIVER HIGHWAY NO. 002  
 UMATILLA COUNTY

ODOT REGION 5  
 3012 ISLAND AVE.  
 LA GRANDE, OR. 97850-9497

MARCH 31, 2014  
 NOT TO SCALE  
 SHEET 1 OF 3



MEASURED ANGLES AND DISTANCES COMPARISON

POINTS		MEASURED		RECORD	
FROM	TO	DISTANCE	BEARING	DISTANCE	BEARING
E18	C18	2,661.75'	N89°06'37"E	2,662.73'	N88°49'41E [3], [5]
E18	1016	783.81'	S69°04'50"W	783.81'	N89°57'37"E [5], [8]
PR_01	C18	50.89'	N88°42'24"E	50.90'	S69°04'50"W [13]
1009	1010	262.06'	N00°43'57"W	262.00'	N00°00'39"E [5], [8]
1010	1011	23.34'	S87°11'40"E	25.33' [2]	N01°08'00"W [2]
1011	1012	28.80'	S89°19'41"E	25.00'	N/A
				28.66'	S86°18'50"E [8], [9]
					S88°56'31"E [8], [9]

INDEX  
( )=REFERENCE DOCUMENT NO.

- REFERENCE DOCUMENTS:
- [1] CS H-214-B
  - [2] CS M-77-B
  - [3] CS 83-201-B
  - [4] CS 91-01-B
  - [5] CS 98-55-C
  - [6] CS 10-110-B
  - [7] CS 13-206-B
  - [8] PPLAT 1998-43
  - [9] UMATILLA HEIGHTS
  - [10] PETERSON ADDITION
  - [11] ODOT DRG. NO. 8B-18-21
  - [12] ODOT DRG. NO. 11B-5-3
  - [13] ODOT DRG. NO. 11B-7-15



LEGEND

- OPUS POINT AS NOTED
- FOUND MONUMENT USED AS GPS NETWORK POINT
- SET GPS POINT
- FOUND MONUMENT
- CALCULATED POINT
- REFERENCE DOCUMENTS
- 1/16 SECTION LINE
- 1/4 SECTION LINE
- RIGHT-OF-WAY
- PROPERTY LINE
- EXISTING EASEMENT LINE
- ABAND' RAILROAD RW
- CENTER LINE

RECEIVED BY  
Umatilla County Surveyor  
Date: 8/29/2014  
Rec'd By: G. Hensley  
No.: 14-120-B

NETWORK CONTROL & RECOVERED MONUMENTS

PT. NO.	LDP NORTHING	LDP EASTING	STATION & ALIGNMENT	OFFSET	DATE	DESCRIPTION & REFERENCE DOCUMENTS
C18	821,900.205	8,492,801.278	383+48.95 U.S. 730	9.50' Lt.	01/14/13	CENTER OF SECTION IS A CALCULATED POINT.
E18	821,941.536	8,495,462.703	409+55.75 U.S. 730	383.77' Rt.	01/14/13	FOUND 2 1/2" DIA. BRASS DISK MARKED "T5N R28E, 1/4 18 17, 1990, LS 951", (CS 98-101-C)
1008	821,415.756	8,493,473.409	N/A DRIVEWAY	N/A	01/14/13	FOUND 5/8" IRON ROD W/YELLOW CAP MARKED "LS2817", (UMATILLA HEIGHTS)
1009	821,641.124	8,493,470.294	390+25.73 U.S. 730	306.53' Rt.	01/14/13	FOUND 1/2" IRON ROD, (CS M-77-B)
1010	821,903.161	8,493,466.944	390+17.74 U.S. 730	44.59' Rt.	01/14/13	FOUND 1/2" IRON ROD, BENT, (CS M-77-B)
1011	821,901.970	8,493,491.257	390+42.12 U.S. 730	45.35' Rt.	01/14/13	FOUND RR SPIKE IN PAVED APPROACH, (PPLAT 1998-43)
1012	821,901.632	8,493,520.055	390+70.94 U.S. 730	45.14' Rt.	01/14/13	FOUND 5/8" IRON ROD W/YELLOW CAP, BENT, (PPLAT 1998-43)
1013	821,883.002	8,493,673.124	392+24.23 U.S. 730	60.91' Rt.	01/14/13	FOUND SET T-POST NET PT. "BRIDGE" US 730 PROJECT, (CS 13-206-B)
1016	821,661.670	8,494,730.556	59+18.19 POWERLINE RD.	29.60' Lt.	01/14/13	FOUND 5/8" IRON ROD W/CAP MARKED "UMA. CO. RD." PIN IS BENT, LS2627", (CS 98-55-C)
PR_01	821,849.133	8,492,801.542	383+38.82 U.S. 730	40.56' Rt.	01/14/13	FOUND 2 1/2" BRASS CAP WITNESS CORNER MARKED, "UMATILLA COUNTY SURVEYOR", (CS H-214-B)
PR_02	821,983.536	8,493,148.438	387+01.17 U.S. 730	40.76' Lt.	01/14/13	SET NAIL IN ROADWAY SHOULDER

REGISTERED PROFESSIONAL LAND SURVEYOR  
*Robert E. Butler*  
OREGON  
JULY 25, 1995  
ROBERT ERICH BUTLER  
2733  
EXPIRES: 12/31/15

OREGON DEPARTMENT OF TRANSPORTATION  
HORIZONTAL CONTROL AND RECOVERY MAP  
U.S. 730 @ POWERLINE ROAD SEC.  
CITY OF UMATILLA  
COLUMBIA RIVER HIGHWAY HWY NO. 002  
UMATILLA COUNTY

ODOT REGION 5  
3012 ISLAND AVE.  
LA GRANDE, OR. 97850-9497

MARCH 31, 2014  
SCALE: 1"=100'  
SHEET 2 OF 3

SEC. 18, T. 5 N., R. 28 E., W.M.

LOT 1

LOT 2

LEGEND	
	OPUS POINT AS NOTED
	FOUND MONUMENT USED AS GPS NETWORK POINT
	SET STRATEGIC POINT
	FOUND BENCHMARK
	FOUND MONUMENT
	1/16 SECTION LINE
	1/4 SECTION LINE
	RIGHT-OF-WAY
	PROPERTY LINE
	EXISTING EASEMENT
	ABAND' RAILROAD RW
	CENTER LINE
	OBSERVATION LINES
[ ]	REFERENCE DOCUMENTS

MEASURED ANGLES AND DISTANCES COMPARISON					
POINTS		MEASURED		RECORD	
FROM	TO	DISTANCE	BEARING	DISTANCE	BEARING
E18	1016	783.81'	S69°04'50"W	783.81'	S69°04'50"W [12]
1000	1001	59.97'	N46°46'32"E	60.00'	[5] N/A
1000	1019	29.94'	N46°44'00"E	30.00'	[5] N/A
1001	1002	60.43'	N43°08'21"W	60.00'	[5] N/A
1001	1019	30.03'	N46°49'04"E	30.00'	[5] N/A
1002	1015	161.38'	N43°11'24"W	161.29'	N42°17'53"W [5]
				161.34'	S43°09'34"E [7], [8]
1004	1006	159.98'	S41°27'23"W	156.95'	N41°30'41"E [6]

INDEX  
[ ]-REFERENCE DOCUMENT NO.

REFERENCE DOCUMENTS:

- [1] CS H-214-B
- [2] CS M-77-B
- [3] CS 83-201-B
- [4] CS 91-01-B
- [5] CS 98-55-C
- [6] CS 10-110-B
- [7] CS 13-206-B
- [8] PPLAT 1998-43
- [9] UMATILLA HEIGHTS
- [10] PETERSON ADDITION
- [11] ODOT DRG. NO. 88-18-21
- [12] ODOT DRG. NO. 11B-5-3
- [13] ODOT DRG. NO. 11B-7-15

MEASURED ANGLES AND DISTANCES COMPARISON					
POINTS		MEASURED		RECORD	
FROM	TO	DISTANCE	BEARING	DISTANCE	BEARING
1006	1007	**=88.95'	**=S65°26'05"W	**=88.91'	**= N65°20'54"E [8]
1009	1010	262.06'	N00°43'57"W	262.00'	N01°08'00"W [2]
1010	1011	23.34'	S87°11'40"E	25.33'	[2] N/A
1011	1012	28.80'	S89°19'41"E	28.66'	S86°18'50"E [7], [8]
1014	1015	287.11'	N77°50'30"E	287.14'	S88°56'31"E [7], [8]
				287.14'	N77°50'00"E [7]
				287.14'	N77°49'58"E [8]
1017	1018	30.17'	N41°29'11"E	30.00'	[5] N/A
1017	1019	**=278.37'	**= S45°51'37"E	**=278.33'	**=S44°59'04"E [5]
				**=266.35'	**=S45°59'08"E [9]
1016	1018	59.77'	S41°32'19"W	60.00'	[5] N/A
1016	1017	29.60'	N41°35'31"E	30.00'	[5] N/A

INDEX  
[ ]-REFERENCE DOCUMENT NO.  
\* = CHORD LENGTH  
\*\* = CHORD BEARING

REGISTERED PROFESSIONAL LAND SURVEYOR

*Robert E. Butler*

OREGON  
JULY 25, 1995  
ROBERT ERICH BUTLER  
2733

EXPIRES: 12/31/15

OREGON DEPARTMENT OF TRANSPORTATION

HORIZONTAL CONTROL AND RECOVERY MAP

U.S. 730 @ POWERLINE ROAD SEC.

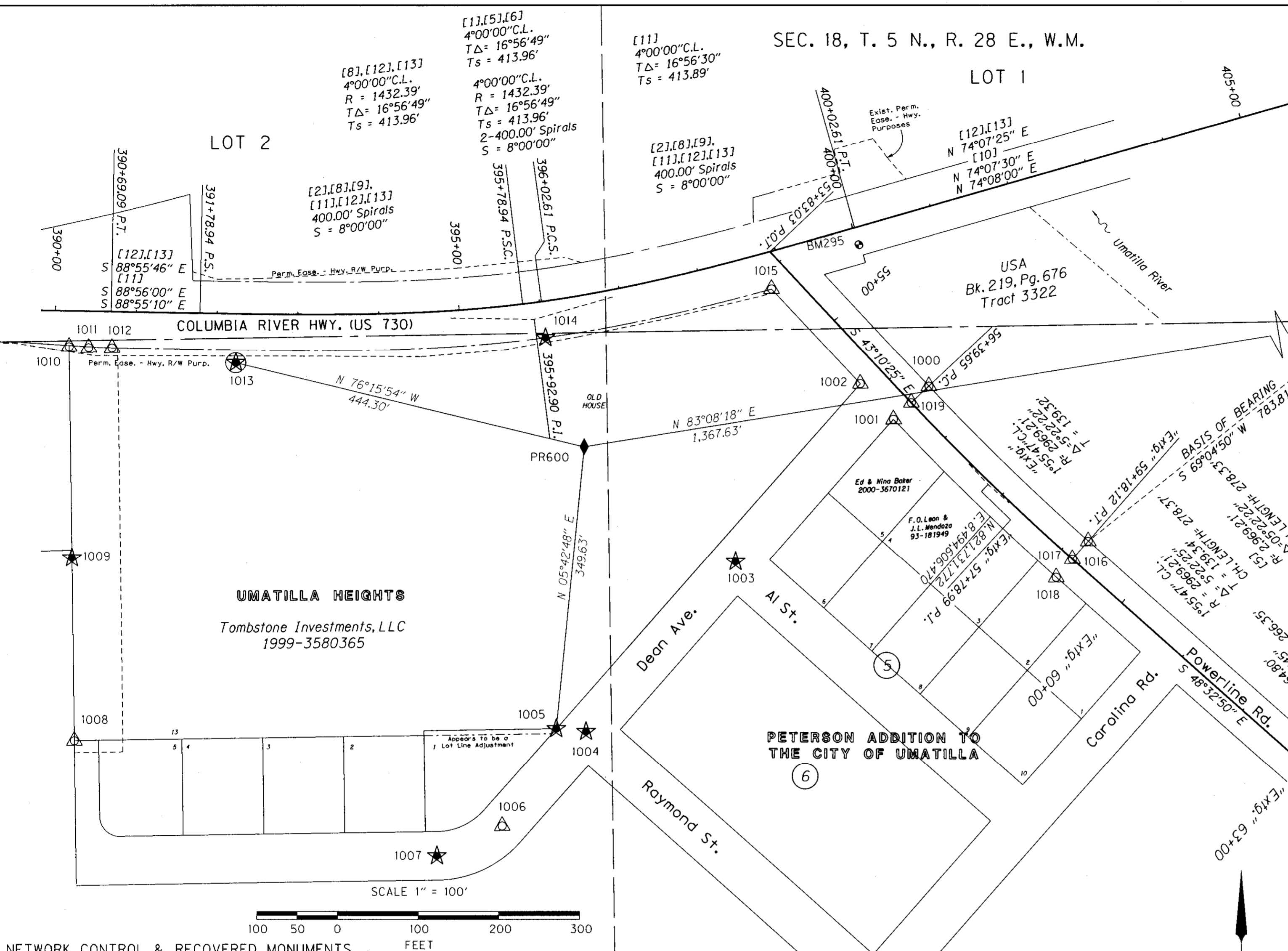
CITY OF UMATILLA

COLUMBIA RIVER HIGHWAY HWY NO. 002

UMATILLA COUNTY

ODOT REGION 5  
3012 ISLAND AVE.  
LA GRANDE, OR. 97850-9497

MARCH 31, 2014  
SCALE: 1"=100'  
SHEET 3 OF 3



PT. NO.	LDP NORTHING	LDP EASTING	STATION & ALIGNMENT	OFFSET	DATE	DESCRIPTION & REFERENCE DOCUMENTS
C18	821,900.205	8,492,801.278	383+48.95 U.S. 730	9.50' Lt.	01/14/13	CENTER OF SECTION IS A CALCULATED POINT.
E18	821,941.536	8,495,462.703	409+55.75 U.S. 730	383.77' Rt.	01/14/13	FOUND 1 1/2" DIA. BRASS DISK MARKED "T5N R28E, 1/4 18 17, 1990, LS 951", (CS 98-101-C)
1000	821,853.913	8,494,532.937	56+39.60 POWERLINE RD.	29.94' Lt.	01/14/13	FOUND 5/8" IRON ROD WITH YELLOW CAP, MARKED "LS2627", (CS 98-55-C)
1001	821,812.842	8,494,489.238	56+39.92 POWERLINE RD.	30.00' Rt.	01/14/13	FOUND 5/8" IRON ROD WITH CAP MARKED "UMA. CO. RD., LS2627", (CS 98-55-C)
1002	821,856.935	8,494,447.920	55+79.45 POWERLINE RD.	30.00' Rt.	01/14/13	FOUND BENT PIPE, (NOTED ON CS M-77-B)
1003	821,636.257	8,494,292.621	N/A DEAN ST. & AL ST.	N/A	01/14/13	FOUND PK NAIL IN PIPE, (NOTED ON CS 98-55-C)
1004	821,426.774	8,494,107.062	N/A DEAN ST. & RAYMOND ST.	N/A	01/14/13	FOUND PK NAIL
1005	821,430.246	8,494,070.061	N/A DEAN ST.	N/A	01/14/13	FOUND 5/8" IRON ROD W/YELLOW CAP MARKED "LS2817"
1006	821,309.123	8,494,003.132	N/A DEAN ST.	N/A	01/14/13	FOUND ALUMINUM DISK AT CENTERLINE DEAN AVE., DISK NOT LEGIBLE, (UMATILLA HEIGHTS)
1007	821,272.142	8,493,922.229	N/A DEAN ST.	N/A	01/14/13	FOUND ALUMINUM DISK AT CENTERLINE DEAN AVE., MARKED, "02817", (UMATILLA HEIGHTS)
1008	821,415.756	8,493,473.409	N/A DRIVEWAY	N/A	01/14/13	FOUND 5/8" IRON ROD W/YELLOW CAP MARKED "LS2817", (UMATILLA HEIGHTS)
1009	821,641.124	8,493,470.294	390+25.73 U.S. 730	306.53' Rt.	01/14/13	FOUND 1/2" IRON ROD, (CS M-77-B)
1010	821,903.161	8,493,466.944	390+17.73 U.S. 730	44.59' Rt.	01/14/13	FOUND 1/2" IRON ROD, BENT, (CS M-77-B)
1011	821,901.970	8,493,491.257	390+42.12 U.S. 730	45.35' Rt.	01/14/13	FOUND RR SPIKE IN PAVED APPROACH, (PPLAT 1998-43)
1012	821,901.632	8,493,520.055	390+70.94 U.S. 730	45.14' Rt.	01/14/13	FOUND 5/8" IRON ROD W/YELLOW CAP, BENT, (PPLAT 1998-43)
1013	821,883.002	8,493,673.124	392+24.23 U.S. 730	60.86' Rt.	01/14/13	FOUND SET T-POST NET PT. "BRIDGE" US 730 PROJECT
1014	821,914.125	8,494,056.799	396+01.42 U.S. 730	44.97' Rt.	01/14/13	FOUND IRON ROD W/YELLOW CAP, BENT, (UMATILLA HEIGHTS)
1015	821,974.595	8,494,337.469	398+82.98 U.S. 730	44.84' Rt.	01/14/13	FOUND IRON ROD, BENT, NO CAP, (PPLAT 1998-43)
1016	821,661.670	8,494,730.556	59+18.19 POWERLINE RD.	29.60' Lt.	01/14/13	FOUND 5/8" IRON ROD W/CAP MARKED "UMA. CO. RD." PIN IS BENT, LS2627", (CS 98-55-C)
1017	821,639.530	8,494,710.905	59+18.12 POWERLINE RD.	0.00'	01/14/13	FOUND RR SPIKE IN POWERLINE RD. AC, (CS 98-55-C)
1018	821,616.927	8,494,690.917	59+18.11 POWERLINE RD.	30.17' Rt.	01/14/13	FOUND 5/8" IRON ROD W/CAP MARKED "UMA. CO. RD., LS 2627", (CS 98-55-C)
1019	821833.390	8,494,4511.133	56+39.65 POWERLINE RD.	0.00'	01/14/13	FOUND RR SPIKE IN POWERLINE RD. AC
PR600	821,778.141	8,494,104.868	396+27.28 U.S. 730	186.49' Rt.	01/14/13	SET 8" NAIL
BM295	822,029.152	8,494,446.321	400+02.05 U.S. 730	21.62' Rt.	01/14/13	FOUND 1" DIA. BRASS DISK IN GOOD CONDITION AT THE WEST END OF THE UMATILLA RIVER BRIDGE, IN THE WINGWALL ON THE SOUTH SIDE OF U.S. 730. BENCHMARK ELEV. = 298.81 FT.