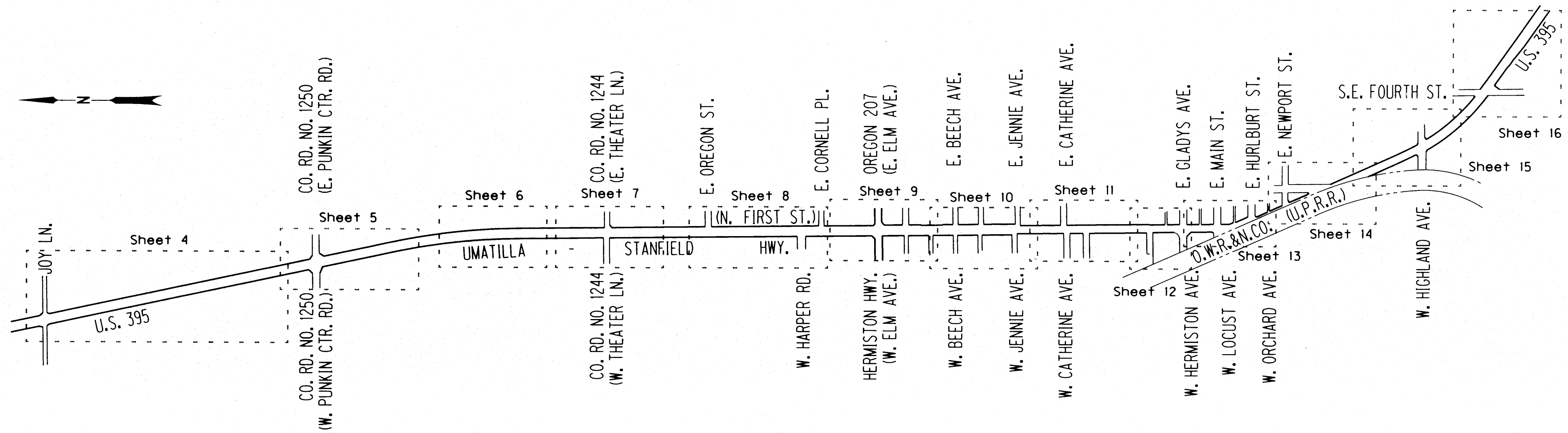


Section 34, T.5 N., R.28 E., W.M.  
 Sections 2,3,10,11&14, T.4 N., R.28 E., W.M.



**ABBREVIATIONS**

ALUM. CAP	= ALUMINUM CAP
BLK.	= BLOCK
BLDG.	= BUILDING
COR.	= CORNER OF SECTION
CO.	= COUNTY
CS*	= COUNTY SURVEY NO.
CONC.	= CONCRETE
DOC.	= DOCUMENT
DWG.	= DRAWING
E.	= EAST
EXTG.	= EXISTING
FD.	= FOUND
HWY.	= HIGHWAY
INSTR.	= INSTRUMENT
MKD.	= MARKED
MON.	= MONUMENT
N.	= NORTH
NE1/4	= N.E. QUARTER
NW1/4	= N.W. QUARTER
O.D.O.T.	= OREGON DEPARTMENT OF TRANSPORTATION
O.S.H.D.	= OREGON STATE HIGHWAY DEPARTMENT
PL. CAP	= PLASTIC CAP
PVMT.	= ASPHALT PAVEMENT
R.	= RANGE
R/W	= RIGHT-OF-WAY
R.R.	= RAILROAD
SDWK.	= SIDEWALK
SEC.	= SECTION
S.	= SOUTH
SE1/4	= S.E. QUARTER
SW1/4	= S.W. QUARTER
STA.	= STATION
T.	= TOWNSHIP
W.	= WEST
W.M.	= WILLAMETTE MERIDIAN
W/	= WITH

**LEGEND**

	HIGHWAY R/W BOUNDARY
	OTHER R/W BOUNDARY
	RAILROAD R/W BOUNDARY

**REFERENCES**

-UMATILLA COUNTY SURVEYOR RECORDS, COUNTY SURVEY NO. (CS\*):

S1. CS*A-19-AX	S14. CS*89-110-A	S27. CS*99-046-B	S40. CS*02-138-B	S53. CS*08-083-C
S2. CS*J-128-A	S15. CS*90-048-B	S28. CS*99-013-B	S41. CS*03-037-B	S54. CS*08-093-C
S3. CS*J-135-AX	S16. CS*90-065-B	S29. CS*99-086-B	S42. CS*03-041-B	S55. CS*10-015-C
S4. CS*L-32-AX	S17. CS*95-095-B	S30. CS*00-076-B	S43. CS*03-288-B	S56. CS*10-0179-B
S5. CS*0-1405-A	S18. CS*95-127-C	S31. CS*00-148-B	S44. CS*04-053-B	S57. CS*11-098-B
S6. CS*0-615-B	S19. CS*97-007-A	S32. CS*00-180-B	S45. CS*04-059-B	S58. CS*11-0120-C
S7. CS*S-156-C	S20. CS*97-013-B	S33. CS*00-234-B	S46. CS*04-100-A	S59. CS*12-018-B
S8. CS*84-001-B	S21. CS*97-122-B	S34. CS*00-245-A	S47. CS*04-147-A	S60. CS*12-099-B
S9. CS*85-112-B	S22. CS*97-160-B	S35. CS*00-255-B	S48. CS*05-099-B	S61. CS*14-077-AX
S10. CS*87-003-B	S23. CS*97-170-B	S36. CS*01-028-A	S49. CS*06-002-C	S62. CS*15-134-B
S11. CS*87-028-C	S24. CS*98-028-C	S37. CS*01-071-B	S50. CS*06-497-B	S63. CS*16-009-B
S12. CS*88-024-C	S25. CS*98-027-B	S38. CS*01-187-A	S51. CS*06-549-AX	S64. CS*L-54-B
S13. CS*88-022-B	S26. CS*99-107-A	S39. CS*02-015-B	S52. CS*08-003-C	

-UMATILLA COUNTY SURVEYOR RECORDS, SUBDIVISION BOOKS:

P1. BOOK 7, PAGE 2	- HAL BRANDT TRACTS
P2. BOOK 3, PAGE 72	- REPLAT OF LOTS 3-10, BLK.1, HAL BRANDT TRACTS
P3. BOOK 13, PAGE 80	- REPLAT OF LOTS, BLK A, LAKEVIEW TRACTS
P4. BOOK 13, PAGE 144	- KEN'S REPLAT OF PART OF BLK.1, ORIGINAL TOWN OF HERMISTON
P5. BOOK 14, PAGE 42	- BASIN ADDITION
P6. BOOK 15, PAGE 20	- PRICE'S ADDITION (CS*07-21-B)
P7. BOOK 15, PAGE 42	- PRICE'S 2ND ADDITION, REPLAT OF LOT 1 (CS*09-34-B)
P8. BOOK 16, PAGE 19	- TOWN CENTRE REPLAT (CS*15-120-B)
P9. BOOK 15, PAGE 61	- ARMAND LARIVE REPLAT
P10. -	- PARTITION PLAT 1995.19
P11. -	- PARTITION PLAT 2002.24
P12. BOOK 2, PAGE 61A	- PLAT OF HERMISTON (CS*13-468-B)
P13. -	- PARTITION PLAT 1998.29 (CS*98-187-B)
P14. BOOK 13, PAGE 45	- REPLAT OF BLK.2 KERN'S ADDITION & BLK.A ORIGINAL TOWN OF HERMISTON
P15. BOOK 2, PAGE 73	- KERN'S ADDITION

-OREGON DEPARTMENT OF TRANSPORTATION (O.D.O.T. OR O.S.H.D.) DRAWINGS:

M1. DWG. NO. 6B-02-01
M2. DWG. NO. 9B-08-11
M3. DWG. NO. 9B-17-08
M4. DWG. NO. 10B-09-13
M5. DWG. NO. 10B-20-13
M6. DWG. NO. 4B-25-13
M7. DWG. NO. 10B-12-23
M8. DWG. NO. 9B-09-13
M9. DWG. NO. 11B-07-46

**SHEET INDEX**

OVERALL MAP, INDEX, REFERENCES & ABBREVIATIONS	... see Sheet 1
NARRATIVE, NOTES, PRIMARY NETWORK & GEODETIC CONTROL TABLE	... see Sheet 2
NETWORK POINTS SCHEMATIC & NETWORK TABLE & BASIS OF BEARING	... see Sheet 3
1ST - 13TH DETAIL MAP & POINT TABLES	... see Sheet 4 - 16

UMATILLA COUNTY SURVEYOR

Date: 2/1/17

Rec'd By: CT

Survey No.: 17-012-B

REGISTERED PROFESSIONAL LAND SURVEYOR

OREGON  
 JULY 13, 1999  
 PETER CORTLAN ELDER  
 51277

RENEWS: 12/31/2017

KEY NO.: 18304  
 DRAWN: F. J. SCHAD

OREGON DEPARTMENT OF TRANSPORTATION  
 RE-MONUMENTATION, RECOVERY, RETRACEMENT & NETWORK MAP  
 HERMISTON SIGNAL IMPROVEMENTS & PAVING PROJECTS  
 UMATILLA-STANFIELD HIGHWAY NO. 54 (US395)  
 JOY LANE (MP 3.3) TO FOURTH STREET (MP 6.1)  
 UMATILLA COUNTY, CITY OF HERMISTON

O.D.O.T. REGION 5  
 3012 ISLAND AVE.  
 LA GRANDE, OR 97850

JANUARY 30, 2017  
 SCALE: NONE  
 Sheet 1 of 16 sheets



Section 34, T.5 N., R.28 E., W.M.  
Sections 2,3,10,11&14, T.4 N., R.28 E., W.M.

NARRATIVE

THIS SURVEY SERVES SEVERAL PURPOSES. FOREMOST, THIS SERVES AS A MAP OF SURVEY FOR THE RE-MONUMENTATION OF SIX PROPERTY CORNERS THAT WERE DESTROYED DURING THE RECENT HIGHWAY CONSTRUCTION PROJECT ADMINISTERED BY THE OREGON DEPARTMENT OF TRANSPORTATION (ODOT) ALONG THE ROUTE OF THE HERMISTON SECTION OF U.S. HWY. 395. THE DISCOVERY OF TWO OF THESE MONUMENTS DURING CONSTRUCTION ACTIVITIES PROMPTED A FURTHER MONUMENT SEARCH AND RECOVERY ALONG THE ROUTE WHICH IS ALSO SHOWN HEREON. THE SAID RECOVERY RETAINS THE POINT NUMBERING FROM PREVIOUSLY RECOVERED MONUMENTS AS SHOWN ON COUNTY SURVEY NO. (CS\*) 16-009-B. AFTER THE RECOVERY, I HAD ACQUIRED MORE EVIDENCE OF THE ORIGINAL RIGHT OF WAY (R/W) CENTERLINE WHICH REQUIRED A NEWER RETRACEMENT USING THE BEST AVAILABLE EVIDENCE. THERE IS ALSO A NEED TO HELP DEFINE THE R/W THROUGH THIS URBANIZED SECTION AND THIS SURVEY ESTABLISHES A NETWORK OF DURABLE AND INTERVISIBLE MONUMENTS. FINALLY, THIS SURVEY ESTABLISHES POSITIONS USING A NEW AND GEODETICALLY CORRECT COORDINATE SYSTEM DEVELOPED BY ODOT, THE COLUMBIA RIVER EAST ZONE OF THE OREGON COORDINATE REFERENCE SYSTEM (O.C.R.S.). NOTE: PERMANENT EASEMENTS ACQUIRED FOR THE RECENT CONSTRUCTION PROJECTS ARE SHOWN HEREON FOR GRAPHICAL REPRESENTATION ONLY.

-HISTORY:

1935-

NEW HIGHWAY CORRIDOR PLANNED FROM THE COLUMBIA RIVER HIGHWAY NORTH TO AND THROUGH THE TOWN OF HERMISTON WITH NEW ROUTE ENDING AT THE INTERSECTION WITH SE FOURTH ST., SHOWN ON OREGON STATE HIGHWAY DIVISION R/W DRAWING NO. 4B-25-13. THE PROJECT SCOPE WAS EXPANDED THAT SAME YEAR TO THE TOWN OF STANFIELD AND ANOTHER MORE DETAILED R/W DRAWING WAS CREATED, O.S.H.D. DWG. 6B-02-01.

1971-

CONSTRUCTION OF THE HERMISTON SECTION OF THE NEW ROUTE FROM ELM AVE. TO SE FOURTH ST., NO MAP OF SURVEY WAS FILED WITH UMATILLA COUNTY BUT AN ADDITIONAL R/W DRAWING IS CREATED FOR THE PROJECT, O.S.H.D. DWG. 9B-08-11, WITH REFERENCE POINTS SHOWN AND OTHER INFORMATION NOTATED ON IT.

1976-

NEW HIGHWAY CORRIDOR PLANNED FROM SE FOURTH ST. IN HERMISTON TO CITY OF STANFIELD, O.S.H.D. R/W DWG. 9B-09-13 IS CREATED.

1980-

HIGHWAY CONSTRUCTION PLANNED FROM COLUMBIA RIVER HIGHWAY TO ELM ST. IN HERMISTON, O.S.H.D. R/W DWG. 9B-17-8 IS CREATED.

1987-

CONSULTANTS DAVID EVANS AND ASSOCIATES MONUMENT R/W FROM SE FOURTH ST. TO AIRPORT ROAD AFTER A HIGHWAY CONSTRUCTION PROJECT AND CS\*87-28-C IS FILED IN UMATILLA CO.

1988-

AFTER HIGHWAY CONSTRUCTION, THE R/W IS MONUMENTED BY O.S.H.D. AND CS\*88-24-C IS FILED WITH UMATILLA COUNTY.

1995-

SIGNAL WORK IS PLANNED FOR THE ROUTE AND CS\*95-95-B IS FILED BY O.D.O.T. WITH UMATILLA COUNTY.

-ADDITIONAL SIGNAL PROJECTS:

1996-

TRAFFIC SIGNAL PROJECT FROM ELM AVE. TO SE FOURTH STREET, O.D.O.T. R/W DWG. 10B-09-13 CREATED.

1998-

TRAFFIC SIGNAL PROJECT AT W. PUNKIN CENTER RD., O.D.O.T. R/W DWG. 10B-12-23 IS CREATED AND CS\*01-071-B IS FILED.

2004-

TRAFFIC SIGNAL PROJECT AT HIGHLAND AVE. AND O.D.O.T. R/W DWG. NO. 10B-20-13 IS CREATED.

2015-

TRAFFIC SIGNAL PROJECT WITH CURB RAMP WORK PLANNED FROM U.S. 730 AT THE COLUMBIA RIVER TO SE FOURTH ST. IN HERMISTON AND O.D.O.T. R/W DWG. NO. 11B-07-46 IS CREATED. AFTER CONSTRUCTION, CS\*16-009-B IS FILED BY O.D.O.T. WITH UMATILLA COUNTY.

PRIMARY NETWORK

A GEODETIC SURVEY WAS PERFORMED USING STATIC GPS WITH 3 SELECTED POINTS: 4TH\_SMK\_SHP, 512 & G640. THE POSITION FOR POINT 512 WAS DERIVED FROM OBSERVATIONS SENT TO THE ONLINE POSITIONING USER SERVICE (OPUS) A PROGRAM ADMINISTERED BY THE NATIONAL GEODETIC SURVEY (NGS) AND SAID POSITION HELD IN THE ADJUSTMENT. THE BASELINES WERE SURVEYED TWICE WITH STATIC GPS AND POST PROCESSED AND A MINIMALLY CONSTRAINED LEAST SQUARES ADJUSTMENT WAS PERFORMED. PRECISION AT 95% CONFIDENCE LEVEL IS: LATITUDE 0.02 FT., LONGITUDE 0.01 FT. AND HEIGHT 0.04 FT. LINEAR VALUES ARE EXPRESSED IN INTERNATIONAL FEET (FI). GEOID MODEL 12A WAS USED TO DERIVE ORTHOMETRIC HEIGHTS.

GEODETIC CONTROL TABLE

POINT (ID) NUMBER	N. LATITUDE	W. LONGITUDE	ELLIPSOID HEIGHT	ORTHOMETRIC HEIGHT
4TH_SMK_SHP	45°49'59.04488"	119°17'05.54496"	413.925 FI	485.290 FI
512	45°51'52.34036"	119°17'30.45709"	461.470 FI	532.845 FI
G640	45°55'05.06617"	119°18'14.75892"	396.207 FI	467.529 FI

R/W CENTERLINE RETRACEMENT -

AFTER CAREFUL ANALYSIS OF ALL THE EVIDENCE, THE RW CENTERLINE WAS RETRACED BY HOLDING THE BEST FIT OF THE AVAILABLE EVIDENCE FOR THE TANGENTS IN AND OUT FOR EACH OF THE THREE CURVES ALONG THE ROUTE, THE POINT OF INTERSECTION (P.I.) WAS THEN REESTABLISHED AND HELD FOR EACH CURVE. THE RECORD LENGTH, ANGLE AND RATE WAS HELD FOR THE SPIRAL PART OF EACH OF THE TWO SPIRALED CURVES ON THE ROUTE. THE DEGREE OF CURVATURE WAS THEN HELD FOR THE CENTRAL CIRCULAR CURVE AND THE DISCREPANCIES IN THE RECORD ALLOWED TO ADJUST IN CENTRAL ANGLE AND LENGTH. STATIONING WAS HELD AT 190+00.00 AND ALLOWED TO ACCUMULATE FORWARD TO THE END OF THIS PROJECT.

-JOY AVENUE TO STA. 190+00.00:

ESTABLISH MID-POINT AT JOY LANE USING ALL 4 RECOVERED O.S.H.D. MONUMENTS, (POINTS 2097, 2098, 2099 AND 4508) EXTEND TANGENT FORWARD TO MID-POINT BETWEEN FOUND BRASS DISCS AT STATION 190+00.00 POINT ON TANGENT (P.O.T.) AND HOLD THIS STATION.

-NORTH CURVE:

HOLD MIDPOINT AT STA. 190+00.00 P.O.T. BETWEEN FOUND BRASS DISCS TO MIDPOINT BETWEEN FOUND BRASS DISCS AT STA. 211+92.31 POINT SPIRAL (P.S.) THEN EXTEND THIS TANGENT FORWARD TO RE-ESTABLISH THE P.I. THE FORWARD TANGENT OUT IS ESTABLISHED BY HOLDING THE FOUND BRASS DISC IN THE MONUMENT BOX AT CENTERLINE FOR STA. 250+00.00 P.O.T., AND THE REFERENCED P.I. AT THE OLD TOWNSITE CURVE BETWEEN MAIN ST. AND HURLBURT AVE. USING THE FOUND SCREWS (POINTS 4538 & 4539) IN THE CURB SHOWN ON O.S.H.D. R/W DWG. 9B-08-11. THIS TANGENT EXTENDED BACK REESTABLISHES THE P.I. STATION AT 219+76.53 (RECORD FROM O.S.H.D. R/W DWG. 9B-17-08 = 219+74.41), WITH A CENTRAL CIRCULAR CURVE ANGLE OF 7°36'13" (RECORD = 7°36' NOTE: O.S.H.D. STANDARD WAS TO SHOW CENTRAL ANGLE TO NEAREST MINUTE). IT IS NOT POSSIBLE TO DERIVE THE RECORD P.I. STATION AND RESULTING CURVE STATIONS FROM O.S.H.D. R/W DWG. 9B-17-08 AND CS\*88-024-C BY INTERSECTION OF THE RETRACED TANGENTS IN AND OUT OF THIS CURVE. THE SAID RETRACED CURVE DOES FIT WELL WITH STATIONING SHOWN ON EARLIER O.S.H.D. R/W DRAWINGS 4B-25-13 AND 6B-02-01 AND THE CURVE AND SPIRAL DATA ON ALL SAID R/W DRAWINGS ARE IDENTICAL. THEREFORE, THE RECORD CURVE STATIONS FROM O.S.H.D. R/W DWG. 9B-17-08 AND CS\*88-024-C ARE CONSIDERED AS-BUILT CONSTRUCTION CURVE STATIONS AND NOT R/W CURVE STATIONS IN THE SURVEY SHOWN HEREON. THE SAID RETRACED CURVE DOES FIT WELL FOR OFFSET WITH THE MONUMENTS RECOVERED ALONG THE R/W LINES OF THE CURVE SHOWN ON CS\*88-024-C.

-OLD TOWNSITE CURVE:

THE BACK TANGENT INTO THIS CURVE IS RETRACED AS STATED PREVIOUSLY FOR THE NORTH CURVE. THE FORWARD TANGENT OUT IS RETRACED BY HOLDING THE SAID REFERENCED P.I. FROM THE FOUND SCREWS IN THE CURB AND HOLDING THE RECORD REFERENCE DISTANCE OF 34.52 FT. FROM THE FOUND SCREW IN THE CURB ON THE LEFT AT RECORD STA. 311+90.35 P.S. SHOWN ON O.S.H.D. R/W DWG. NO. 9B-08-11. PROJECTING THIS TANGENT BACK GIVES A CENTRAL ANGLE OF 23°28'48" AND P.I. STA. 296+50.65 (RECORD IS 23°28' AND 296+52.30). THIS RETRACED CENTERLINE ALSO MATCHES THE RECORD OFFSET FROM THE 1/4 SECTION CORNER AT RIDGEWAY AVE. AS SHOWN ON O.S.H.D. R/W DWG. 9B-08-11 (RECORD OFFSET IS 12.03 FT. AND IN THIS SURVEY IT IS 12.02 FT.) AND ALSO CLOSELY MATCHES THE STATION OF THE SECTION CORNER AT ELM AVE. GIVEN ON O.S.H.D. R/W DWG. 6B-02-01 (RECORD 261+09, THIS SURVEY 261+09.48). ALSO, R/W OFFSETS FROM SAID RETRACED CENTERLINE AGREE CLOSELY WITH PRIVATE SURVEYS ALONG THE OLD TOWNSITE CORRIDOR.

-SOUTH CURVE:

THE BACK TANGENT INTO THIS CURVE IS DESCRIBED PREVIOUSLY IN THE OLD TOWNSITE RETRACED CURVE. THE FORWARD TANGENT OUT IS REESTABLISHED FROM R/W MONUMENTS RECOVERED FROM CS\*87-028-C. I FOUND SEVERAL R/W MONUMENTS ON THE ROUTE SOUTH TOWARD STANFIELD FROM SAID SURVEY, AND A RECOVERY OF A LINE OF 5 MONUMENTS ALONG THE LEFT SIDE THAT FIT WELL TOGETHER. I HOLD THE RECORD R/W OFFSET FOR THE MONUMENTS SET FOR THE P.T. AND THE P.S. ON THE LEFT SIDE (POINTS 4530 & 4534) OF 45 FEET AND USE FOR THE R/W CENTERLINE. I THEN HOLD THE SAID TANGENTS AND THE RESULTING P.I. STATION IS 319+20.04, THE RECORD STATION IS 319+20.00 FROM O.S.H.D. R/W DWG. 9B-08-11. THE RESULTING TOTAL DELTA ANGLE IS 30°54'19", THE RECORD FROM SAID R/W DRAWING IS 30°57". THE RESULTING CENTRAL CURVE LENGTH IS 630.17 FT. THE RECORD FROM SAID R/W DRAWING IS 631.67 FT. I FIND WITH THIS CURVE ALSO THAT THE RECORD STATIONING IS AS-BUILT CONSTRUCTION CURVE STATIONING AND NOT R/W CURVE STATIONING IN THIS SURVEY. I FIND THAT WHEN I END THE SURVEY SHOWN HEREON AT THE RECORD P.T. STATION FROM SAID R/W DRAWING, THE STATIONING FROM SAID SURVEY IS AHEAD OF RECORD FROM SAID R/W DRAWING BY ONLY 1.3 FEET AND THAT IS WITHOUT THE HOLDING OF STATION EQUATIONS BEHIND ON THE ROUTE. I ADD ONE EQUATION AT THE END IN ORDER TO MATCH THE RECORD STATIONING FROM O.S.H.D. R/W DWG. 9B-09-13 FOR THE HERMISTON - STANFIELD SECTION.

NARRATIVE NOTES

NOTE ON OLD TOWNSITE R/W:

THE HIGHWAY COMMISSION ORIGINALLY AUTHORIZED AN 80 FT. R/W THROUGH THE HERMISTON SECTION EXCEPT FOR THE OLD TOWNSITE OF HERMISTON. THIS SECTION WAS ESTABLISHED AS A JURISDICTIONAL TRANSFER RETAINING THE PRE-EXISTING STREET WIDTHS. THE SAID SECTION IS FROM THE ONE QUARTER SECTION CORNER TO SECTIONS 10 AND 11 AT RIDGEWAY AVENUE SOUTH TO WHERE THE SOUTH LINE OF NEWPORT AVENUE INTERSECTS WITH THE OLD FRONT STREET R/W (FRONTING ALONG THE RAILROAD). THE LEGAL WIDTHS REVERT TO THE OLD TOWNSITE PLAT OR THE FOUR RE-PLATS OF LOTS THROUGH SAID SECTION. THERE IS ALSO ENCROACHMENT ONTO RAILROAD R/W THROUGH THE SAID SECTION AND IS SHOWN HEREON BY SURVEY AND ALSO SHOWN ON O.S.H.D. DWG. 9B-08-11. THERE IS ONE BLOCK, THE BLOCK BETWEEN NEWPORT AVE. AND HURLBURT AVE. WHERE THE CITY VACATED A PORTION OF FRONT STREET AND THE RE-PLAT MOVED THE LOT OUT TOWARD THE HIGHWAY (SEE CS\*97-170-B AND PLAT BOOK 13, PAGE 144). THE SAID REPLAT MEASURED THE CONSTRUCTED CURB LINES TO DEFINE THE HIGHWAY R/W CENTERLINE AND THE CENTERLINE RETRACEMENT SHOWN HEREON AGREES CLOSELY.

NOTE ON CADASTRAL MONUMENTS:

THE R/W CENTERLINE SHOWN HEREON FOLLOWS CLOSELY TO A CADASTRAL LINE BETWEEN SECTIONS IN TOWNSHIP 4 NORTH, RANGE 28 EAST FOR A PORTION OF THE ROUTE. THIS CADASTRAL LINE IS NOT PARALLEL TO THE R/W CENTERLINE BUT SEVERAL CORNERS ARE MONUMENTED IN THE ROADWAY CLOSE TO SAID CENTERLINE. THESE CORNERS WERE RECOVERED AND SHOWN HEREON. THE CORNER AT THEATER AVENUE IS WELL DOCUMENTED WITH CURRENT MONUMENT SHOWN HEREON FROM CS\*S-156-C. THERE ARE RECORDS FROM THE PAST FOR THE CORNERS AT ELM AVE., RIDGEWAY AVE. AND JENNIE AVE. BUT THE CURRENT MONUMENTS SHOWN HEREON WERE SET BY THE HIGHWAY DEPARTMENT WITHOUT ANY FILINGS. THIS SEEMS TO BE THE SITUATION THROUGH THE YEARS, THE HIGHWAY DEPARTMENT MAINTAINING THE MONUMENTS AFTER EVERY REPAVING OF THE ROAD. THE CADASTRAL MONUMENT AT MAIN ST. AND W. LOCUST IN THE HIGHWAY HAS NO RECORD OF MONUMENTATION AND THE RECORD ONLY SHOWS AN OFFSET MONUMENT ON THE ORIGINAL PLAT OF HERMISTON (BOOK 2, PAGE 61). THE MONUMENTS SET BY THE HIGHWAY DEPARTMENT ARE EASY TO RECOGNIZE BECAUSE THEY FOLLOW THE NORMAL HIGHWAY PROCEDURE FOR SETTING A BRASS DISC IN CONCRETE. THE MONUMENT IS SET CLOSELY TO FINAL POSITION IN THE CONCRETE AND THEN THE CONCRETE IS ALLOWED TO SET UP, THEN THE PUNCHMARK FOR THE FINAL POSITION IS SET BY SURVEY AND USUALLY RESULTS IN A MARK THAT IS OFF-CENTER. THE HIGHWAY DEPARTMENT BRASS DISC MONUMENTS FOR THESE PARTICULAR CORNERS ARE A NON-TYPICAL STYLE WITH NO CASTING MARKS AND NO OTHER MARKS OTHER THAN THE OFF-CENTER PUNCH.

UMATILLA COUNTY  
SURVEYOR  
2/1/17  
Date:  
CT  
Rec'd By:  
17-012-B  
Survey No.:

REGISTERED  
PROFESSIONAL  
LAND SURVEYOR  
*Peter Cortlan Elder*  
OREGON  
JULY 13, 1999  
PETER CORTLAN ELDER  
51277  
RENEWS: 12/31/2017

KEY NO.: 18304  
DRAWN: F. J. SCHAD

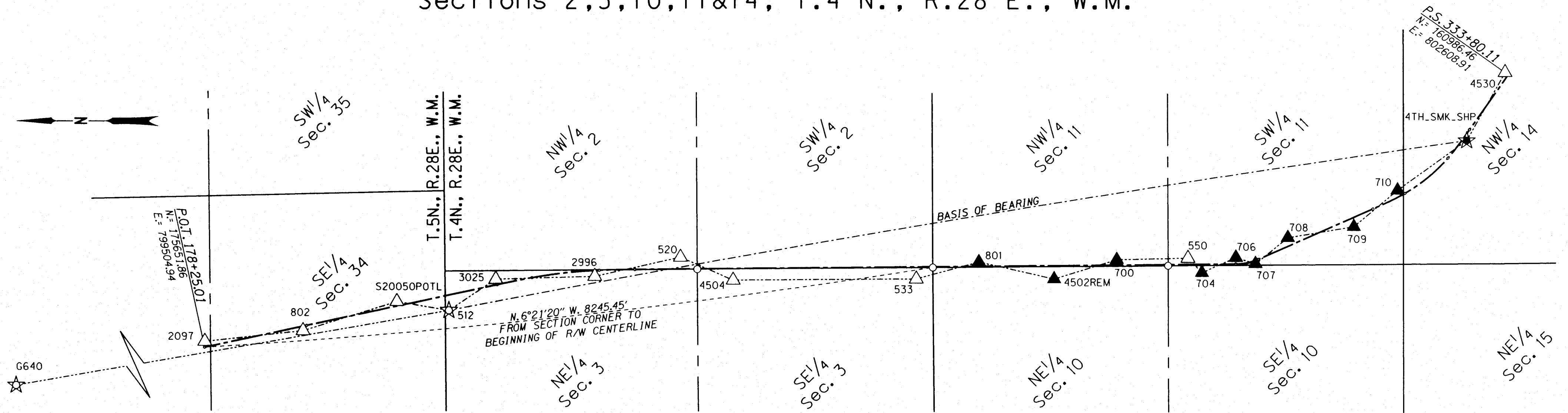


OREGON DEPARTMENT OF TRANSPORTATION  
RE-MONUMENTATION, RECOVERY, RETRACEMENT & NETWORK MAP  
HERMISTON SIGNAL IMPROVEMENTS & PAVING PROJECTS  
UMATILLA-STANFIELD HIGHWAY NO. 54 (US395)  
JOY LANE (MP 3.3) TO FOURTH STREET (MP 6.1)  
UMATILLA COUNTY, CITY OF HERMISTON

O.D.O.T. REGION 5  
3012 ISLAND AVE.  
LA GRANDE, OR 97850

JANUARY 30, 2017  
SCALE: NONE  
Sheet 2 of 16 sheets

Section 34, T.5 N., R.28 E., W.M.  
 Sections 2,3,10,11&14, T.4 N., R.28 E., W.M.



NOTE: THE POSITION OF THE QUARTER SECTION DIVISIONS SHOWN ABOVE ARE FOR GRAPHICAL REPRESENTATION ONLY, EXCEPT FOR THE DIVISION BETWEEN THE SW1/4 OF SECTION 2 AND THE SE1/4 OF SECTION 3, AND EXCEPT FOR THE DIVISION BETWEEN THE NE1/4 OF SECTION 10 AND THE NW1/4 OF SECTION 11.

LEGEND

- ☆ FOUND MONUMENT USED AS A PRIMARY NETWORK POINT
- ★ SET MONUMENT USED AS A PRIMARY NETWORK POINT
- △ FOUND MONUMENT USED AS A NETWORK POINT
- ▲ SET NETWORK POINT
- ⊕ FOUND CADASTRAL CORNER
- SECTION LINES
- - - 1/4 SECTION LINES
- - - R/W CENTERLINE
- OBSERVATION LINES
- BEARING TIE
- [ ] = SEE SHT. 1 REFERENCES

BASIS OF BEARING

THE BASIS OF BEARING FOR THIS SURVEY IS THE BEARING FROM:

POINT 512 TO POINT 4TH.SMK.SHP,  
 GEODETIC FORWARD BEARING= S. 08°44'18.3" E.,  
 GRID BEARING= S. 09°36'09.5" E.

THE BEARINGS SHOWN ON THIS SURVEY ARE GRID BEARINGS BASED ON COORDINATES FROM OREGON COORDINATE REFERENCE SYSTEM; COLUMBIA RIVER EAST ZONE. HORIZONTAL DATUM IS NAD83 (2011)(EPOCH:2010.0000). REFERENCE ELLIPSOID IS WGS84. ALL LINEAR VALUES ARE EXPRESSED IN INTERNATIONAL FEET UNLESS NOTED.

THE OCRS COLUMBIA RIVER EAST ZONE IS DEFINED AS FOLLOWS:

LAMBERT CONFORMAL CONIC PROJECTION (SINGLE PARALLEL) NORTH AMERICAN DATUM OF 1983.  
 STANDARD PARALLEL AND GRID ORIGIN: 45°40'00" N; CENTRAL MERIDIAN: 120°30'00" W  
 FALSE NORTHING: 30000.000 M; FALSE EASTING: 150000.000 M  
 STANDARD PARALLEL SCALE: 1.000008 (EXACT)  
 FURTHER INFORMATION IS AVAILABLE AT:  
<https://www.oregon.gov/ODOT/HWY/GEOMETRONICS/Pages/ocrs.aspx>

NETWORK POINT COORDINATE TABLE

POINT (ID) NUMBER	NORTHING	EASTING	DATE	DESCRIPTION
G640	192375.64	796499.99	2/26/2016	FD. 3-5/8" BRASS DISC MKD.: "G640 1968", IN CONC., N. SIDE OF US730 IN FENCELINE. [S63]
4TH.SMK.SHP	161453.99	801863.17	2/26/2016	SET 5/8" X 30" IRON ROD W/ 1-1/2" ALUM. CAP W/ CENTER PUNCH, MKD.: "ODOT", AT EDGE OF PARKING LOT PVMT.
512	172902.36	799926.28	2/26/2016	FD. 1-1/2" O.S.H.D. ALUM. CAP W/ OFF-CENTER PUNCH. [S37][M7]
520	170289.01	800445.75	4/5/2016	FD. 1-1/2" YELLOW PL. CAP MKD.: "ORPLS 53406". [S52][S54]
533	167645.30	800374.42	3/23/2016	FD. T-POST W/ PUNCH, BEHIND SDWK., NEAR O.D.O.T. POST.
550	164580.76	800490.72	2/3/2016	FD. 1-1/2" O.S.H.D. ALUM. CAP W/ CENTER PUNCH, MKD.: "TRAV PT 2 1994", IN CURB IN FRONT OF GAS STATION. [S17]
700	165401.82	800486.11	3/18/2016	SET 1-1/4" COPPER DISC IN SDWK. AT BLDG. ENTRY, MKD.: "ODOT 700".
704	164436.35	800393.53	3/17/2016	SET 5/8" X 30" IRON ROD W/ 1-1/2" ALUM. CAP MKD.: "ODOT 704", W/ CENTER PUNCH IN LANDSCAPING BERM.
706	164044.87	800494.58	3/17/2016	SET 1-1/4" COPPER DISC IN SDWK. MKD.: "ODOT 706", NEAR BACK ENTRY OF STONE BLDG., 7.5' BEHIND CURB.
707	163825.84	800464.76	3/17/2016	SET 1-1/4" COPPER DISC IN SDWK. MKD.: "ODOT 707", NEAR SIGNAL CABINETS.
708	163452.96	800714.12	3/17/2016	SET 1-1/4" COPPER DISC IN SDWK. RAMP, MKD.: "ODOT 708".
709	162739.72	800945.76	3/17/2016	SET 1-1/4" COPPER DISC IN SDWK. MKD.: "ODOT 709", NEAR BUSINESS DRIVEWAY
710	162195.04	801293.36	3/17/2016	SET 1-1/4" COPPER DISC IN TOP OF SDWK. RAMP CURBING, MKD.: "ODOT 710".
801	166938.55	800480.97	3/23/2016	SET 5/8" X 30" IRON ROD W/ 1-1/2" ALUM. CAP MKD.: "ODOT 801", IN LAWN
802	174544.08	799693.70	4/11/2016	FD. 1-1/2" O.S.H.D. ALUM. CAP W/ OFF-CENTER PUNCH, R/W POST BEARS S. 1'. [S12]
2097	175638.01	799559.06	4/11/2016	FD. 1-1/2" O.S.H.D. ALUM. CAP W/ OFF-CENTER PUNCH, R/W POST BEARS N. 2'. [S12]
2996	171211.50	800331.47	4/8/2016	FD. 3" O.S.H.D. BRASS DISC IN CONC. W/ CENTER PUNCH, R/W POST BEARS N. 2'. [S12]
3025	172370.95	800265.41	4/6/2016	FD. 3" O.S.H.D. BRASS DISC IN CONC. W/ CENTER PUNCH. [S12]
4502REM	166099.66	800400.30	7/29/2016	SET 1-1/4" COPPER DISC IN SDWK. MKD.: "ODOT 4502", RE-MONUMENTATION OF FD. (3/21/2016) 1-1/2" YELLOW PL. CAP MKD.: "EDWARDS 951". [S49]
4504	169725.23	800351.58	3/28/2016	FD. 1-1/2" YELLOW PL. CAP MKD.: "EDWARDS 951", O.S.H.D. POST BEARS N. 0.5'. [S56]
4530	161023.31	802634.73	6/9/2016	FD. 1-1/2" O.S.H.D. ALUM. CAP W/ CENTER PUNCH, MKD.: "LS 1068", ON SLOPE 5' BEHIND SDWK., BESIDE R/W POST. [S11][M8]
S20050POTL	173487.55	800024.01	4/11/2016	FD. 1-1/2" O.S.H.D. ALUM. CAP W/ OFF-CENTER PUNCH, 4.5' BEHIND SDWK., R/W POST BEARS 2' N. [S12]

UMATILLA COUNTY  
 SURVEYOR  
 2/1/17  
 Date:  
 CT  
 Rec'd By:  
 17-012-8  
 Survey No.:

REGISTERED  
 PROFESSIONAL  
 LAND SURVEYOR  
  
 OREGON  
 JULY 13, 1999  
 PETER CORTLAN ELDER  
 51277  
 RENEWS: 12/31/2017

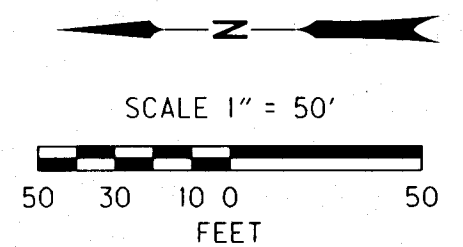
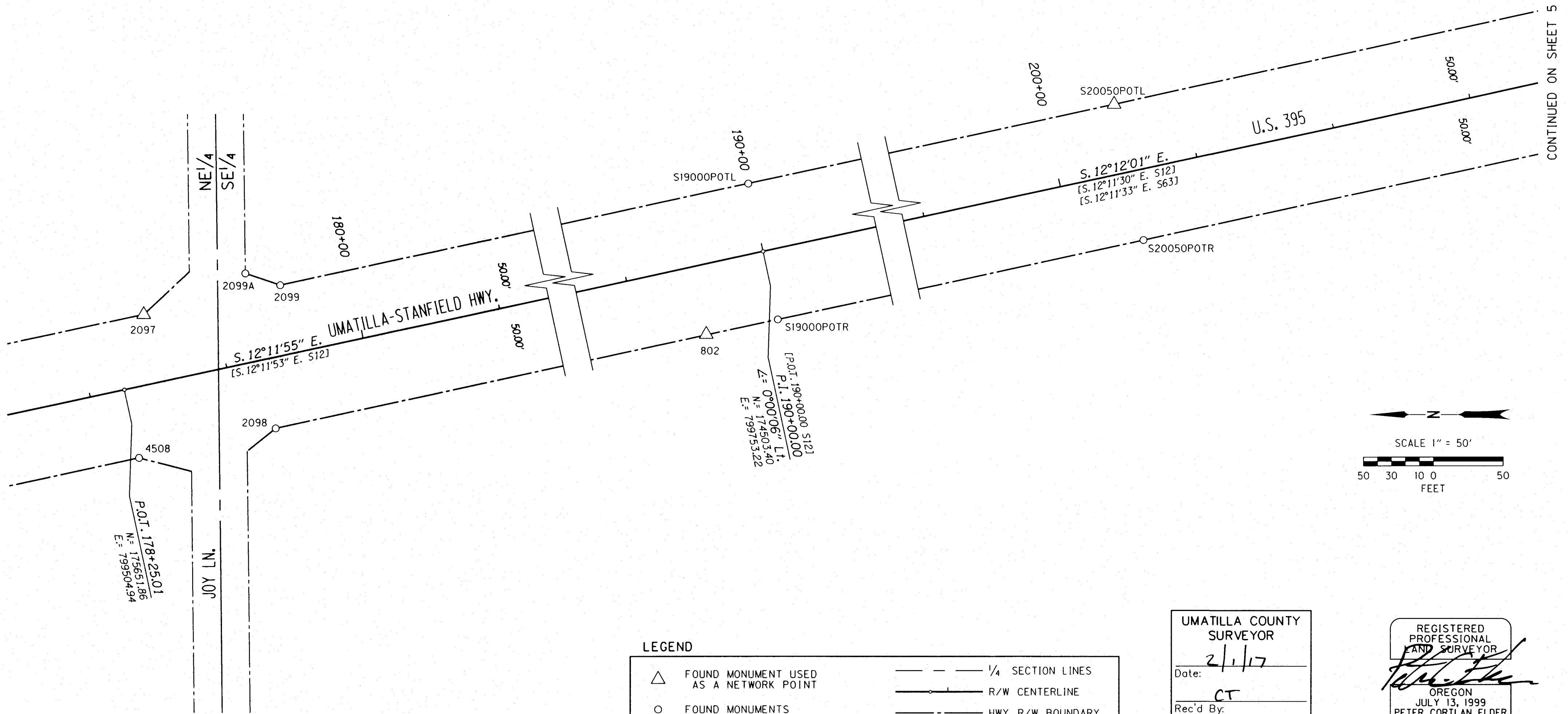
KEY NO.: 18304  
 DRAWN: F. J. SCHAD

OREGON DEPARTMENT OF TRANSPORTATION  
 RE-MONUMENTATION, RECOVERY, RETRACEMENT & NETWORK MAP  
 HERMISTON SIGNAL IMPROVEMENTS & PAVING PROJECTS  
 UMATILLA-STANFIELD HIGHWAY NO. 54 (US395)  
 JOY LANE (MP 3.3) TO FOURTH STREET (MP 6.1)  
 UMATILLA COUNTY, CITY OF HERMISTON  
 O.D.O.T. REGION 5  
 3012 ISLAND AVE.  
 LA GRANDE, OR 97850  
 JANUARY 30, 2017  
 SCALE: NONE  
 Sheet 3 of 16 sheets





NE<sup>1</sup>/<sub>4</sub> & SE<sup>1</sup>/<sub>4</sub> Section 34, T.5 N., R.28 E., W.M.



LEGEND

- △ FOUND MONUMENT USED AS A NETWORK POINT
- FOUND MONUMENTS
- [ ] = SEE SHT. 1 REFERENCES
- 1/4 SECTION LINES
- R/W CENTERLINE
- - - HWY. R/W BOUNDARY
- OTHER R/W BOUNDARY

UMATILLA COUNTY  
SURVEYOR  
Date: 2/1/17  
CT  
Rec'd By:  
Survey No.: 17-012-6

REGISTERED  
PROFESSIONAL  
AND SURVEYOR  
*Peter Cortlan Elder*  
OREGON  
JULY 13, 1999  
PETER CORTLAN ELDER  
51277  
RENEWS: 12/31/2017

RECOVERED MONUMENT TABLE

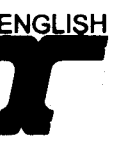
POINT (ID) NUMBER	NORTHING	EASTING	STATION	OFFSET	DATE	DESCRIPTION
802	174544.08	799693.70	189+47.66	49.58 RT	4/11/2016	FD. 1-1/2" O.S.H.D. ALUM. CAP W/ OFF-CENTER PUNCH, R/W POST BEARS S. 1'. [S12]
2097	175638.01	799559.06	178+49.98	49.97 LT	4/11/2016	FD. 1-1/2" O.S.H.D. ALUM. CAP W/ OFF-CENTER PUNCH, R/W POST BEARS N. 2'. [S12]
2098	175543.53	799477.21	179+25.03	49.99 RT	4/11/2016	FD. 1-1/2" O.S.H.D. ALUM. CAP W/ OFF-CENTER PUNCH, R/W POST BEARS N. 2'. [S12]
2099	175540.29	799580.21	179+49.97	50.00 LT	4/11/2016	FD. 1-1/2" ALUM. CAP W/ OFF-CENTER PUNCH, ILLEGIBLE. [S12]
2099A	175565.29	799588.63	179+27.31	63.51 LT	4/11/2016	FD. 1-1/2" YELLOW PL. CAP MKD.: "EDWARDS 951". [S47][M3]
4508	175641.29	799456.07	178+25.01	50.00 RT	4/18/2016	FD. 1-1/2" O.S.H.D. ALUM. CAP W/ OFF-CENTER PUNCH, POST BEARS N. 2'. [S12]
SI9000POTL	174513.95	799802.01	190+00.00	49.92 LT	9/1/2016	FD. 3" O.S.H.D. BRASS DISC IN CONC., NEAR FENCE., W/ CENTER PUNCH, R/W POST BEARS 2' N. [S12]
SI9000POTR	174492.84	799704.43	190+00.00	49.92 RT	4/22/2016	FD. 3" O.S.H.D. BRASS DISC IN CONC., W/ CENTER PUNCH, R/W POST BEARS 2' N. [S12]
S20050POTL	173487.55	800024.01	200+50.13	50.00 LT	4/11/2016	FD. 1-1/2" O.S.H.D. ALUM. CAP W/ OFF-CENTER PUNCH, 4.5' BEHIND SDWK., R/W POST BEARS 2' N. [S12]
S20050POTR	173466.55	799926.33	200+50.02	49.91 RT	4/11/2016	FD. 5/8" IRON ROD, NO CAP, O.S.H.D. R/W POST BEARS 2' N. [S12]

KEY NO.: 18304  
DRAWN: F. J. SCHAD

OREGON DEPARTMENT OF TRANSPORTATION  
RE-MONUMENTATION, RECOVERY, RETRACEMENT & NETWORK MAP  
HERMISTON SIGNAL IMPROVEMENTS & PAVING PROJECTS  
UMATILLA-STANFIELD HIGHWAY NO. 54 (US395)  
JOY LANE (MP 3.3) TO FOURTH STREET (MP 6.1)  
UMATILLA COUNTY, CITY OF HERMISTON

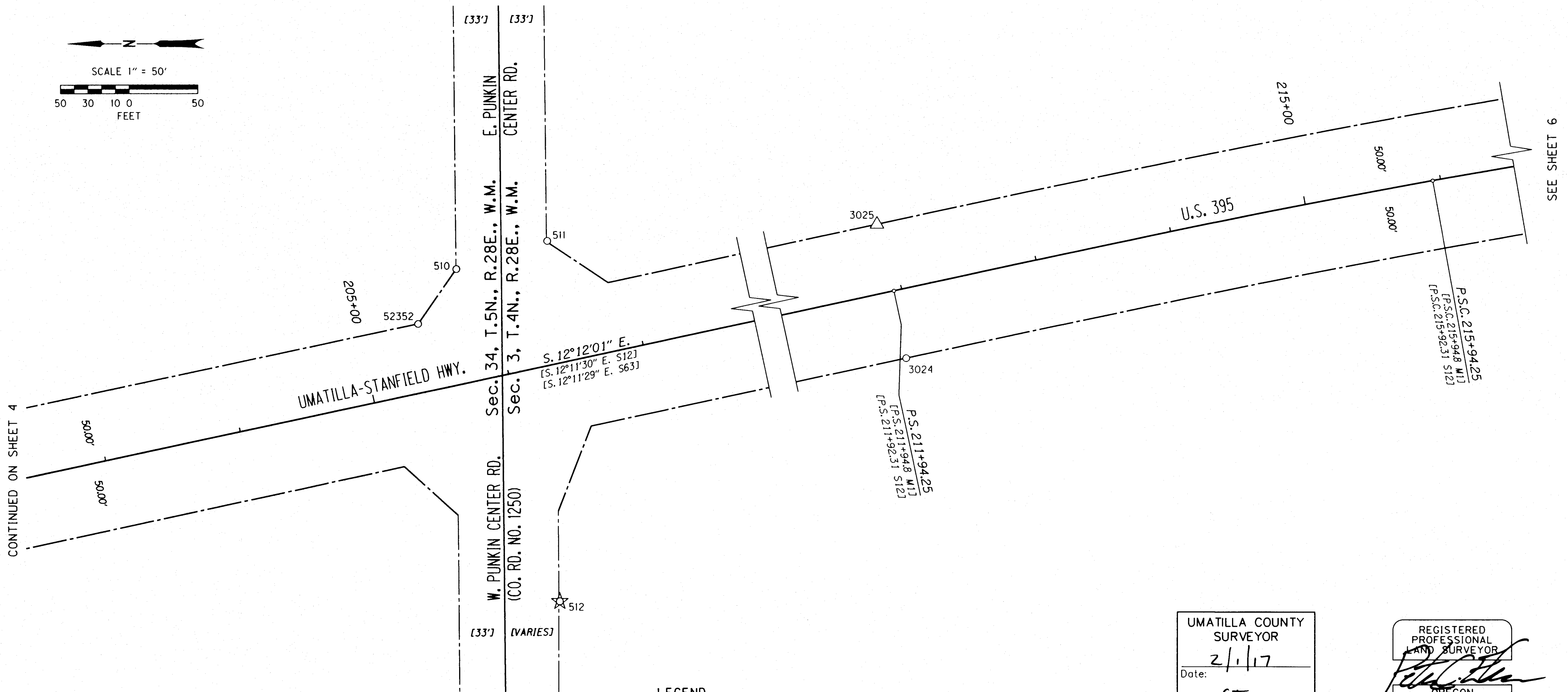
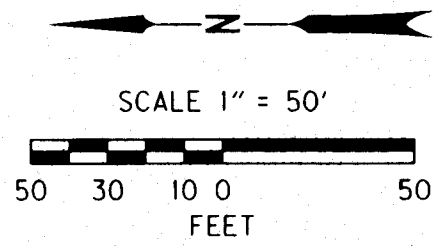
O.D.O.T. REGION 5  
3012 ISLAND AVE.  
LA GRANDE, OR 97850

JANUARY 30, 2017  
SCALE: 1 in. = 50 ft  
Sheet 4 of 16 sheets



CONTINUED ON SHEET 5

SE<sup>1</sup>/<sub>4</sub> Section 34, T.5 N., R.28 E., W.M.  
 NE<sup>1</sup>/<sub>4</sub> Section 3, T.4 N., R.28 E., W.M.



CONTINUED ON SHEET 4

SEE SHEET 6

LEGEND

☆	FOUND MONUMENT USED AS A PRIMARY NETWORK POINT	—	SECTION LINES
△	FOUND MONUMENT USED AS A NETWORK POINT	—○—	R/W CENTERLINE
○	FOUND MONUMENTS	- - -	HWY. R/W BOUNDARY
[ ]	= SEE SHT. 1 REFERENCES	- · - · -	OTHER R/W BOUNDARY

UMATILLA COUNTY  
 SURVEYOR  
 Date: 2/1/17  
 Rec'd By: CT  
 Survey No.: 17-012-8

REGISTERED PROFESSIONAL LAND SURVEYOR  
*Peter Cortlan Elder*  
 OREGON  
 JULY 13, 1999  
 PETER CORTLAN ELDER  
 51277  
 RENEWS: 12/31/2017

KEY NO.: 18304  
 DRAWN: F. J. SCHAD

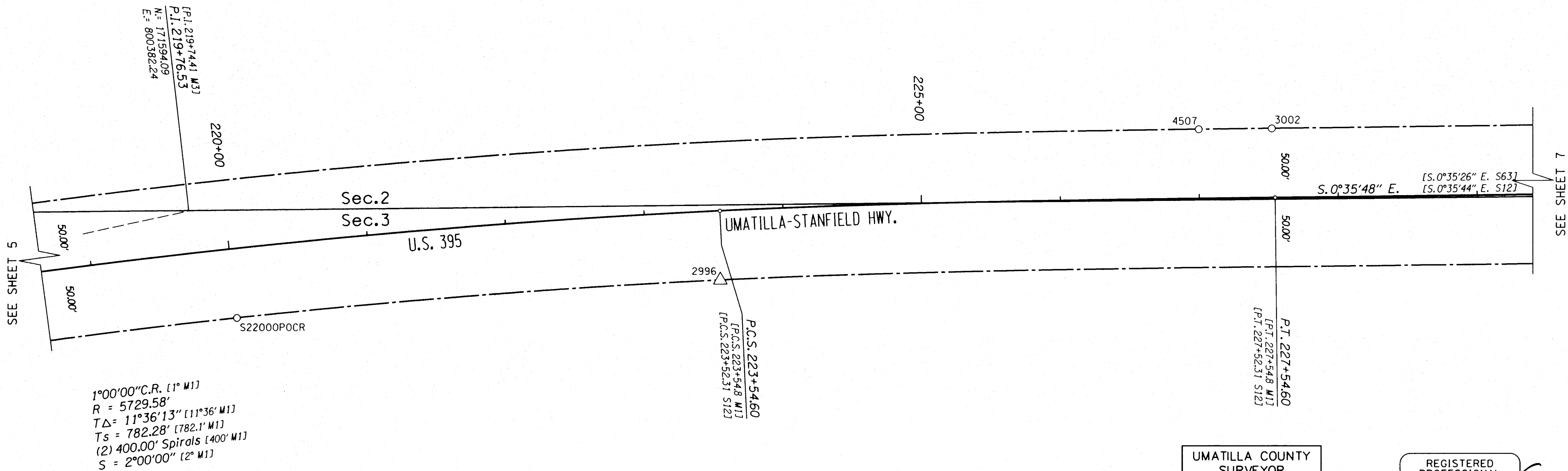
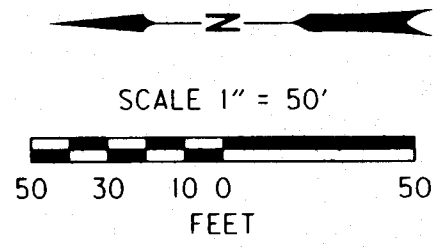
ENGLISH

RECOVERED MONUMENT TABLE

POINT (ID) NUMBER	NORTHING	EASTING	STATION	OFFSET	DATE	DESCRIPTION
510	172977.71	800168.23	205+78.94	83.22 LT	4/6/2016	FD. 5/8" IRON ROD, NO CAP, UNDER LANDSCAPE FABRIC. [S60]
511	172911.61	800188.66	206+47.86	89.22 LT	4/6/2016	FD. 1-1/2" ALUM. CAP W/ OFF-CENTER PUNCH, ILLEGIBLE, IN PARKING LOT PVMT. [S37][M7]
512	172902.36	799926.28	206+01.45	169.19 RT	2/26/2016	FD. 1-1/2" O.S.H.D. ALUM. CAP W/ OFF-CENTER PUNCH. [S37][M7]
3024	172349.80	800167.72	211+92.56	49.98 RT	4/8/2016	FD. 3" O.S.H.D. BRASS DISC IN CONC., W/ CENTER PUNCH. [S12]
3025	172370.95	800265.41	211+92.53	49.98 LT	4/6/2016	FD. 3" O.S.H.D. BRASS DISC IN CONC., W/ CENTER PUNCH. [S12]
52352	173005.57	800128.18	205+43.24	49.96 LT	4/6/2016	FD. 1-1/2" YELLOW PL. CAP MKD.: "EDWARDS 951", UNDER LANDSCAPE FABRIC. [S60]

OREGON DEPARTMENT OF TRANSPORTATION  
 RE-MONUMENTATION, RECOVERY, RETRACEMENT & NETWORK MAP  
 HERMISTON SIGNAL IMPROVEMENTS & PAVING PROJECTS  
 UMATILLA-STANFIELD HIGHWAY NO. 54 (US395)  
 JOY LANE (MP 3.3) TO FOURTH STREET (MP 6.1)  
 UMATILLA COUNTY, CITY OF HERMISTON  
 O.D.O.T. REGION 5  
 3012 ISLAND AVE.  
 LA GRANDE, OR 97850  
 JANUARY 30, 2017  
 SCALE: 1 in. = 50 ft  
 Sheet 5 of 16 sheets

NW<sup>1</sup>/<sub>4</sub> Section 2, T.4 N., R.28 E., W.M.  
 NE<sup>1</sup>/<sub>4</sub> Section 3, T.4 N., R.28 E., W.M.



1°00'00" C.R. [1° M1]  
 R = 5729.58'  
 TΔ = 11°36'13" [11°36' M1]  
 Ts = 782.28' [782.1' M1]  
 (2) 400.00' Spirals [400' M1]  
 S = 2°00'00" [2° M1]

SEE SHEET 5

SEE SHEET 7

LEGEND

△	FOUND MONUMENT USED AS A NETWORK POINT	—	SECTION LINES
○	FOUND MONUMENTS	—	R/W CENTERLINE
[ ]	= SEE SHT. I REFERENCES	- - -	HWY. R/W BOUNDARY

RECOVERED MONUMENT TABLE

POINT (ID) NUMBER	NORTHING	EASTING	STATION	OFFSET	DATE	DESCRIPTION
2996	171211.50	800331.47	223+52.56	50.06 RT	4/8/2016	FD. 3" O.S.H.D. BRASS DISC IN CONC. W/ CENTER PUNCH, R/W POST BEARS N. 2'. [S12]
3002	170814.31	800440.28	227+52.67	49.91 LT	4/6/2016	FD. 1-1/2" YELLOW PL. CAP MKD.: "EDWARDS 951". [S53]
4507	170866.89	800439.71	227+00.12	49.90 LT	4/8/2016	FD. 1-1/2" YELLOW PL. CAP MKD.: "EDWARDS 951". [S62]
S22000POCR	171559.68	800304.84	220+00.23	50.03 RT	4/8/2016	FD. 1-1/2" O.S.H.D. ALUM. CAP W/ OFF-CENTER PUNCH, R/W POST BEARS N. 2'. [S12]

UMATILLA COUNTY SURVEYOR  
 Date: 2/1/17  
 Rec'd By: CT  
 Survey No.: 17-012-8

REGISTERED PROFESSIONAL LAND SURVEYOR  
*Peter Cortlan Elder*  
 OREGON  
 JULY 13, 1999  
 PETER CORTLAN ELDER  
 51277  
 RENEWS: 12/31/2017

KEY NO.: 18304  
 DRAWN: F. J. SCHAD

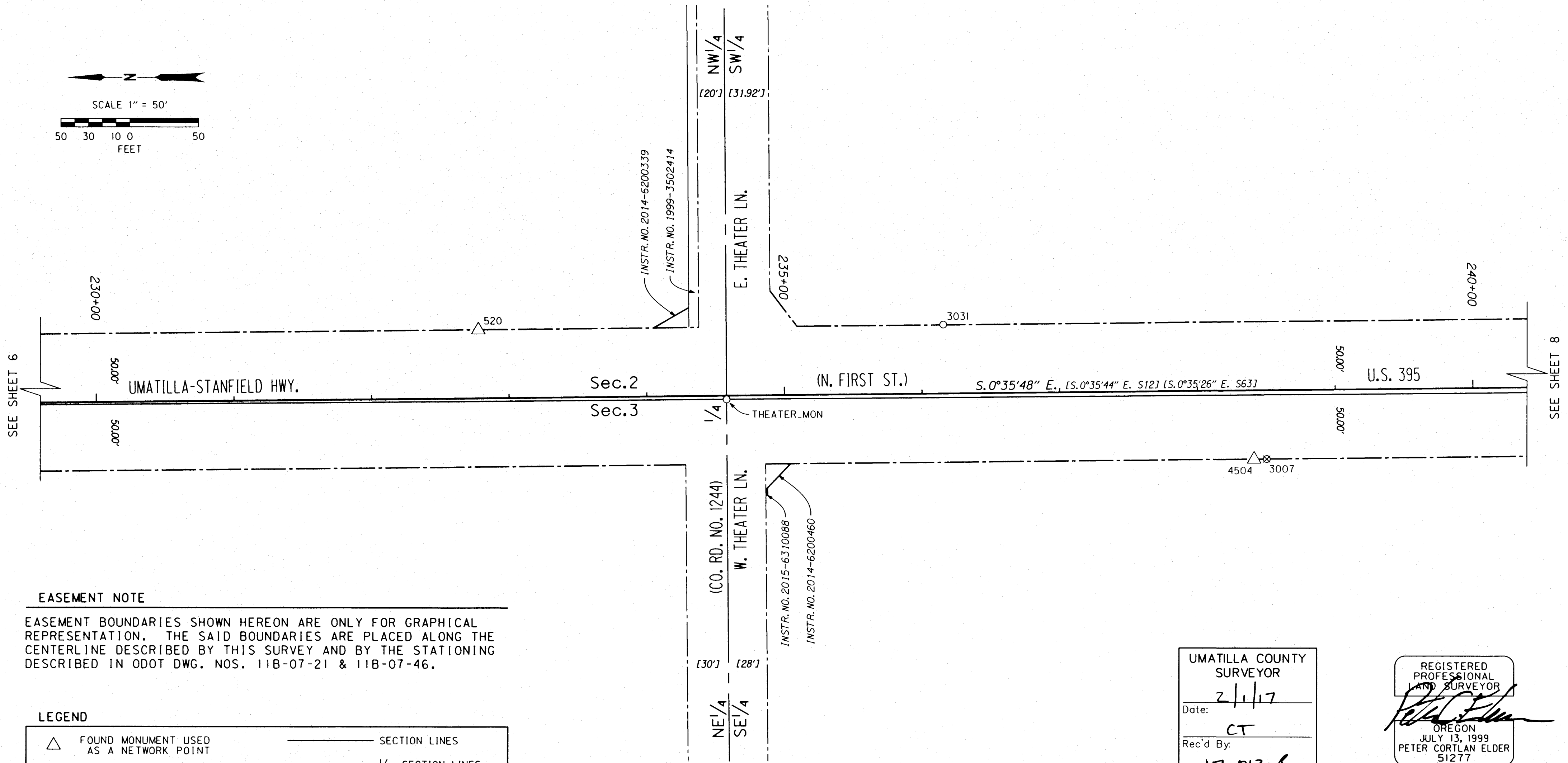
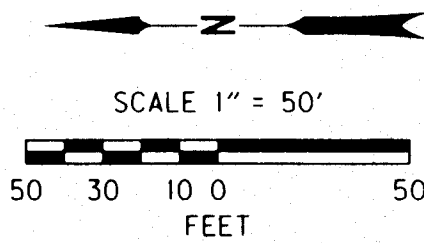


OREGON DEPARTMENT OF TRANSPORTATION  
 RE-MONUMENTATION, RECOVERY, RETRACEMENT & NETWORK MAP  
 HERMISTON SIGNAL IMPROVEMENTS & PAVING PROJECTS  
 UMATILLA-STANFIELD HIGHWAY NO. 54 (US395)  
 JOY LANE (MP 3.3) TO FOURTH STREET (MP 6.1)  
 UMATILLA COUNTY, CITY OF HERMISTON

O.D.O.T. REGION 5  
 3012 ISLAND AVE.  
 LA GRANDE, OR 97850

JANUARY 30, 2017  
 SCALE: 1 in. = 50 ft  
 Sheet 6 of 16 sheets

NW<sup>1</sup>/<sub>4</sub> & SW<sup>1</sup>/<sub>4</sub> Section 2, T.4 N., R.28 E., W.M.  
 NE<sup>1</sup>/<sub>4</sub> & SE<sup>1</sup>/<sub>4</sub> Section 3, T.4 N., R.28 E., W.M.



**EASEMENT NOTE**

EASEMENT BOUNDARIES SHOWN HEREON ARE ONLY FOR GRAPHICAL REPRESENTATION. THE SAID BOUNDARIES ARE PLACED ALONG THE CENTERLINE DESCRIBED BY THIS SURVEY AND BY THE STATIONING DESCRIBED IN ODOT DWG. NOS. 11B-07-21 & 11B-07-46.

**LEGEND**

△	FOUND MONUMENT USED AS A NETWORK POINT	—————	SECTION LINES
○	FOUND MONUMENTS	- - - - -	1/4 SECTION LINES
⊗	DESTROYED MONUMENT LOCATION	—————	R/W CENTERLINE
—————	BOUNDARY OF NEW EASEMENT FOR HWY. R/W PURPOSES	—————	HWY. R/W BOUNDARY
[ ]	= SEE SHT. I REFERENCES	—————	OTHER R/W BOUNDARY

UMATILLA COUNTY  
 SURVEYOR  
 Date: 2/1/17  
 Rec'd By: CT  
 Survey No.: 17-012-8

REGISTERED PROFESSIONAL LAND SURVEYOR  
 OREGON  
 JULY 13, 1999  
 PETER CORTLAN ELDER  
 51277  
 RENEWS: 12/31/2017

KEY NO.: 18304  
 DRAWN: F. J. SCHAD



**RECOVERED MONUMENT TABLE**

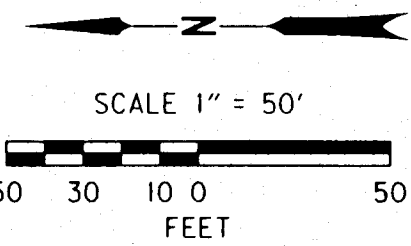
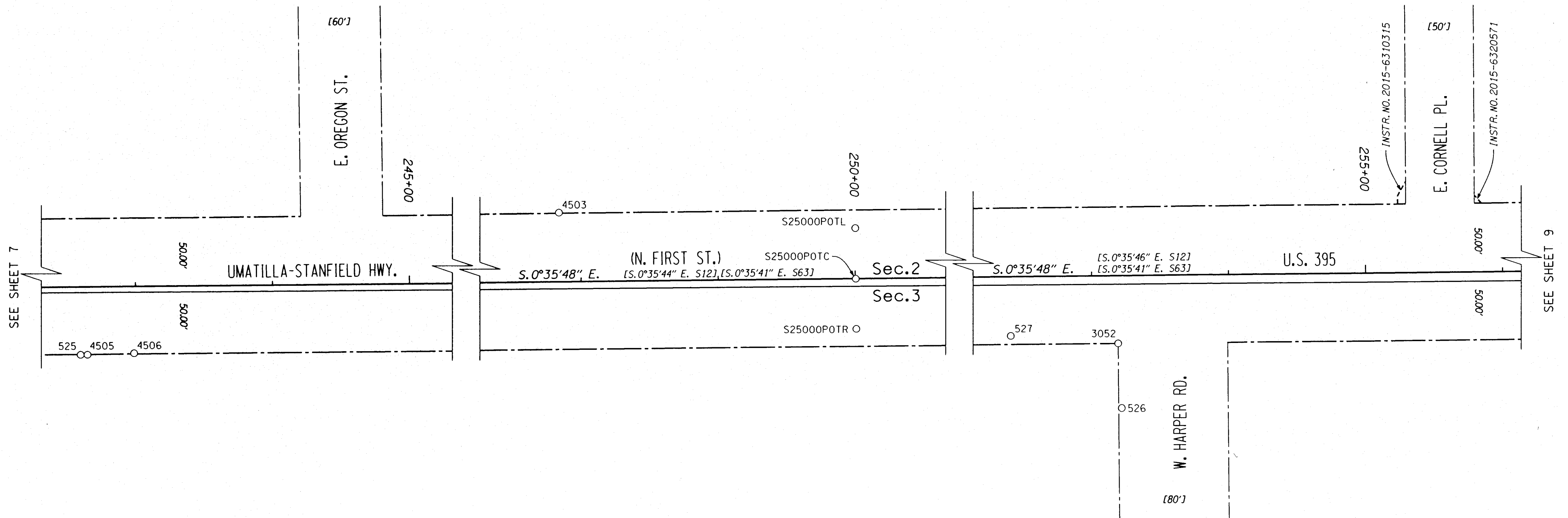
POINT (ID) NUMBER	NORTHING	EASTING	STATION	OFFSET	DATE	DESCRIPTION
520	170289.01	800445.75	232+78.00	49.91 LT	4/5/2016	FD. 1-1/2" YELLOW PL. CAP MKD.: "ORPLS 53406". [S52][S54]
3031	169951.33	800449.65	236+15.71	50.29 LT	3/28/2016	FD. 1-1/2" YELLOW PL. CAP MKD.: "EDWARDS 951". [S50]
4504	169725.23	800351.58	238+40.77	50.13 RT	3/28/2016	FD. 1-1/2" YELLOW PL. CAP MKD.: "EDWARDS 951", O.S.H.D. POST BEARS N. 0.5". [S56]
THEATER_MON	170108.58	800395.00	234+57.89	2.72 RT	4/13/2016	FD. 2-1/2" BRASS DISC, MKD.: "T4N R28E, 1/4 S3 S2, 1981 PLS933", W/ CENTER PUNCH, DOWN 8" IN 8" MON. BOX. [S7][S12][S15][S24][M1][M3]

OREGON DEPARTMENT OF TRANSPORTATION  
 RE-MONUMENTATION, RECOVERY, RETRACEMENT & NETWORK MAP  
 HERMISTON SIGNAL IMPROVEMENTS & PAVING PROJECTS  
 UMATILLA-STANFIELD HIGHWAY NO. 54 (US395)  
 JOY LANE (MP 3.3) TO FOURTH STREET (MP 6.1)  
 UMATILLA COUNTY, CITY OF HERMISTON

O.D.O.T. REGION 5  
 3012 ISLAND AVE.  
 LA GRANDE, OR 97850

JANUARY 30, 2017  
 SCALE: 1 in. = 50 ft  
 Sheet 7 of 16 sheets

SW<sup>1</sup>/<sub>4</sub> Section 2, T.4 N., R.28 E., W.M.  
 SE<sup>1</sup>/<sub>4</sub> Section 3, T.4 N., R.28 E., W.M.



LEGEND

○	FOUND MONUMENTS	—	SECTION LINES
---	BOUNDARY OF NEW EASEMENT	—	R/W CENTERLINE
[ ]	= SEE SHT. I REFERENCES	---	HWY. R/W BOUNDARY
		---	OTHER R/W BOUNDARY

EASEMENT NOTE

EASEMENT BOUNDARIES SHOWN HEREON ARE ONLY FOR GRAPHICAL REPRESENTATION. THE SAID BOUNDARIES ARE PLACED ALONG THE CENTERLINE DESCRIBED BY THIS SURVEY AND BY THE STATIONING DESCRIBED IN ODOT DWG. NOS. 11B-07-21 & 11B-07-46.

UMATILLA COUNTY  
 SURVEYOR  
 Date: 2/1/17  
 Rec'd By: CT  
 Survey No.: 17-012-B

REGISTERED  
 PROFESSIONAL  
 LAND SURVEYOR  
 OREGON  
 JULY 13, 1999  
 PETER CORTLAN ELDER  
 51277  
 RENEWS: 12/31/2017

RECOVERED MONUMENT TABLE

POINT (ID) NUMBER	NORTHING	EASTING	STATION	OFFSET	DATE	DESCRIPTION
525	169306.55	800355.90	242+59.47	50.17 RT	4/5/2016	FD. 5/8" IRON ROD, W/ 1-1/2" YELLOW PL. CAP MKD.: "EDWARDS 951", INCORRECTLY DESCRIBED ON CS*16-009-B. [S34]
526	168244.41	800319.93	253+21.18	97.20 RT	3/29/2016	FD. "MAG" NAIL IN PVMT. N. SIDE OF HARPER RD. [S46]
527	168325.49	800372.67	252+40.66	43.62 RT	3/28/2016	FD. 3/4" IRON ROD, NO CAP, W/ PUNCH, 6" BEHIND SDWK. [NR][S20]
3052	168247.12	800367.21	253+18.96	49.89 RT	3/28/2016	FD. 1-1/2" YELLOW PL. CAP MKD.: "EDWARDS 951". [S46]
4503	168782.88	800462.06	247+84.22	50.53 LT	3/28/2016	FD. 1-1/2" YELLOW PL. CAP, ILLEGIBLE, IN PVMT.. [S8][S24][S39]
4505	169301.56	800355.98	242+64.46	50.14 RT	4/5/2016	FD. 1-1/2" YELLOW PL. CAP, ILLEGIBLE, IN PVMT. [S38]
4506	169267.53	800357.06	242+98.50	49.41 RT	4/5/2016	FD. 1-1/2" YELLOW PL. CAP, ILLEGIBLE, IN PVMT. [S15][P10][P11]
S25000POTC	168566.23	800413.78	250+00.36	0.00	4/5/2016	FD. 2-1/2" BRASS DISC W/ OFF-CENTER PUNCH, NO OTHER MARKS, DOWN 4" IN MON. BOX AT CENTER OF ROAD. [S12]
S25000POTL	168566.60	800450.75	250+00.37	36.97 LT	3/28/2016	FD. 3" O.S.H.D. BRASS DISC IN CONC., W/ CENTER PUNCH, BACK OF CURB. [S12]
S25000POTR	168565.83	800376.80	250+00.37	36.98 RT	3/28/2016	FD. 3" O.S.H.D. BRASS DISC IN CONC., W/ CENTER PUNCH, BACK OF CURB. [S12]

KEY NO.: 18304  
 DRAWN: F. J. SCHAD

OREGON DEPARTMENT OF TRANSPORTATION  
 RE-MONUMENTATION, RECOVERY, RETRACEMENT & NETWORK MAP  
 HERMISTON SIGNAL IMPROVEMENTS & PAVING PROJECTS  
 UMATILLA-STANFIELD HIGHWAY NO. 54 (US395)  
 JOY LANE (MP 3.3) TO FOURTH STREET (MP 6.1)  
 UMATILLA COUNTY, CITY OF HERMISTON

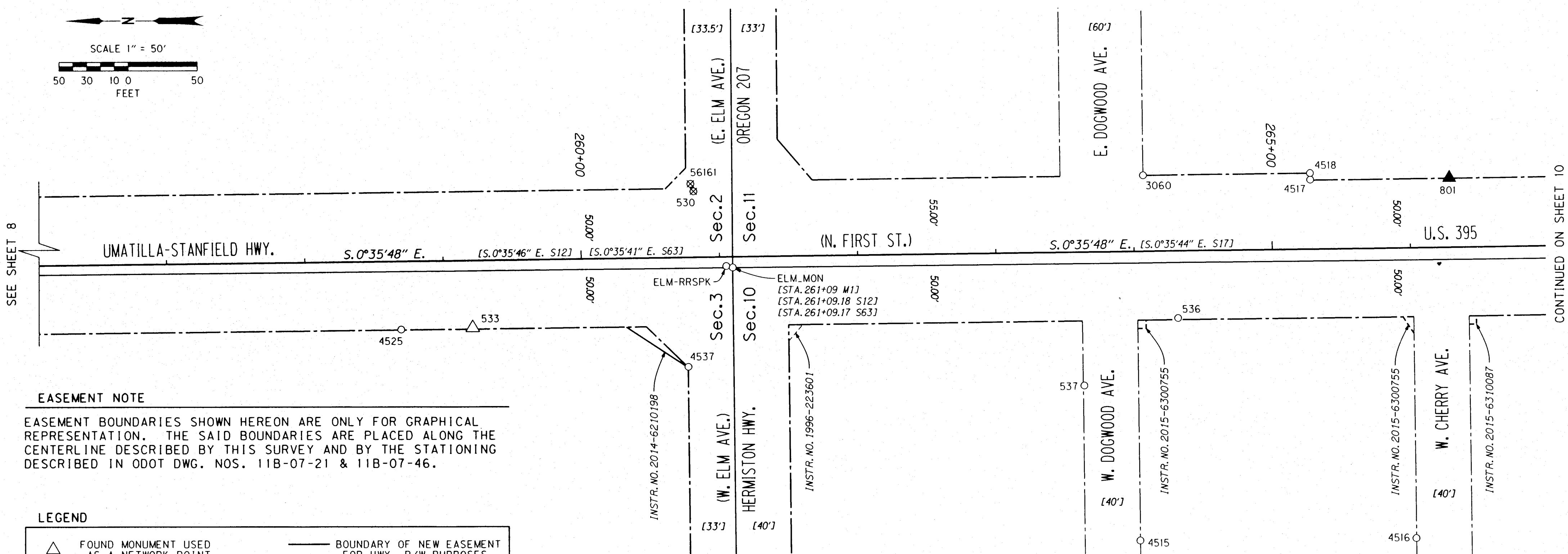
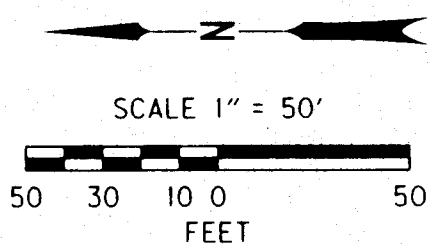
O.D.O.T. REGION 5  
 3012 ISLAND AVE.  
 LA GRANDE, OR 97850

JANUARY 30, 2017  
 SCALE: 1 in. = 50 ft  
 Sheet 8 of 16 sheets

ENGLISH



SW<sup>1</sup>/<sub>4</sub> Section 2 & SE<sup>1</sup>/<sub>4</sub> Section 3, T.4 N., R.28 E., W.M.  
 NE<sup>1</sup>/<sub>4</sub> Section 10 & NW<sup>1</sup>/<sub>4</sub> Section 11, T.4 N., R.28 E., W.M.



**EASEMENT NOTE**

EASEMENT BOUNDARIES SHOWN HEREON ARE ONLY FOR GRAPHICAL REPRESENTATION. THE SAID BOUNDARIES ARE PLACED ALONG THE CENTERLINE DESCRIBED BY THIS SURVEY AND BY THE STATIONING DESCRIBED IN ODOT DWG. NOS. 11B-07-21 & 11B-07-46.

**LEGEND**

△	FOUND MONUMENT USED AS A NETWORK POINT	—	BOUNDARY OF NEW EASEMENT FOR HWY. R/W PURPOSES
▲	SET NETWORK POINT	- - - -	BOUNDARY OF NEW EASEMENT
○	FOUND MONUMENTS	- - - -	BOUNDARY OF EXTG. EASEMENT
⊗	DESTROYED MONUMENT LOCATION	—○—	R/W CENTERLINE
—	SECTION LINES	—	HWY. R/W BOUNDARY
[ ]	= SEE SHT. I REFERENCES	—	OTHER R/W BOUNDARY

**SET MONUMENT TABLE**

POINT (ID) NUMBER	NORTHING	EASTING	STATION	OFFSET	DATE	DESCRIPTION
801	166938.55	800480.97	266+28.65	50.23 LT	3/23/2016	SET 5/8" X 30" IRON ROD W/ 1-1/2" ALUM. CAP MKD.: "ODOT 801", IN LAWN

**RECOVERED MONUMENT TABLE**

POINT (ID) NUMBER	NORTHING	EASTING	STATION	OFFSET	DATE	DESCRIPTION
533	167645.30	800374.42	259+20.83	48.95 RT	3/23/2016	FD. T-POST W/ PUNCH, BEHIND SDWK., NEAR O.D.O.T. POST.
536	167134.96	800379.96	264+31.20	48.72 RT	3/28/2016	FD. 'PK' NAIL IN PARKING LOT PVMT. AT FACE OF CURB. [NR]
537	167202.86	800330.85	263+62.79	97.12 RT	3/28/2016	FD. 3/4" IRON ROD, NO CAP. [NR]
3060	167160.13	800483.58	264+07.11	55.15 LT	3/23/2016	FD. 5/8" IRON ROD, NO CAP, BEHIND SDWK. [S9][P3]
4515	167162.51	800219.68	264+01.98	208.71 RT	4/26/2016	FD. CHISELED 'X' IN SDWK., EACH LEG 2-1/2" LONG. [S25][P5]
4516	166962.67	800221.07	266+01.82	209.40 RT	4/26/2016	FD. CHISELED 'X' IN SDWK., EACH LEG 2-1/2" LONG. [S25][P5]
4517	167039.09	800480.09	265+28.10	50.40 LT	5/2/2016	FD. 5/8" IRON ROD, NO CAP, IN LANDSCAPING. [P3]
4518	167039.24	800484.86	265+28.00	55.17 LT	5/3/2016	FD. 1/2" IRON ROD, NO CAP, IN LANDSCAPING. [S9]
4525	167697.00	800373.24	258+69.12	49.59 RT	6/22/2016	FD. 1-1/2" YELLOW PL. CAP MKD. "TOMPKINS SURVEYING", UNDER BUSH [S27][S33][S35]
4537	167489.29	800345.35	260+76.53	79.64 RT	6/22/2016	FD. 1-1/2" YELLOW PL. CAP MKD.: "TOMPKINS SURVEYING", IN LAWN, 3.5' BEHIND SDWK. [S35]
ELM.MON	167457.09	800417.70	261+09.48	7.63 RT	4/13/2016	FD. 2-1/2" BRASS DISC W/ OFF-CENTER PUNCH, NO OTHER MARKS, ON STEM IN CONC., DOWN 4" IN 10" MON. BOX. [M1][M2][M3][S18][S29][S40][S43][S63]
ELM-RRSPK	167461.77	800418.77	261+04.81	6.51 RT	4/13/2016	FD. R.R. SPIKE IN PVMT. W/ OFF-CENTER 'X'. [NR]

UMATILLA COUNTY SURVEYOR  
 Date: 2/1/17  
 Rec'd By: CT  
 Survey No.: 17-012-8

REGISTERED PROFESSIONAL SURVEYOR  
 OREGON  
 JULY 13, 1999  
 PETER CORTLAN ELDER  
 51277  
 RENEWS: 12/31/2017

KEY NO.: 18304  
 DRAWN: F. J. SCHAD

OREGON DEPARTMENT OF TRANSPORTATION  
 RE-MONUMENTATION, RECOVERY, RETRACEMENT & NETWORK MAP  
 HERMISTON SIGNAL IMPROVEMENTS & PAVING PROJECTS  
 UMATILLA-STANFIELD HIGHWAY NO. 54 (US395)  
 JOY LANE (MP 3.3) TO FOURTH STREET (MP 6.1)  
 UMATILLA COUNTY, CITY OF HERMISTON

O.D.O.T. REGION 5  
 3012 ISLAND AVE.  
 LA GRANDE, OR 97850

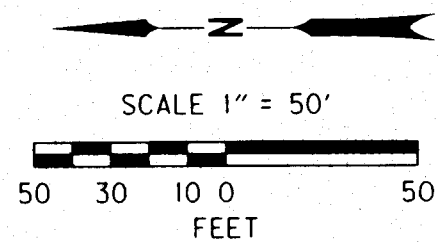
JANUARY 30, 2017  
 SCALE: 1 in. = 50 ft  
 Sheet 9 of 16 sheets



SEE SHEET 8

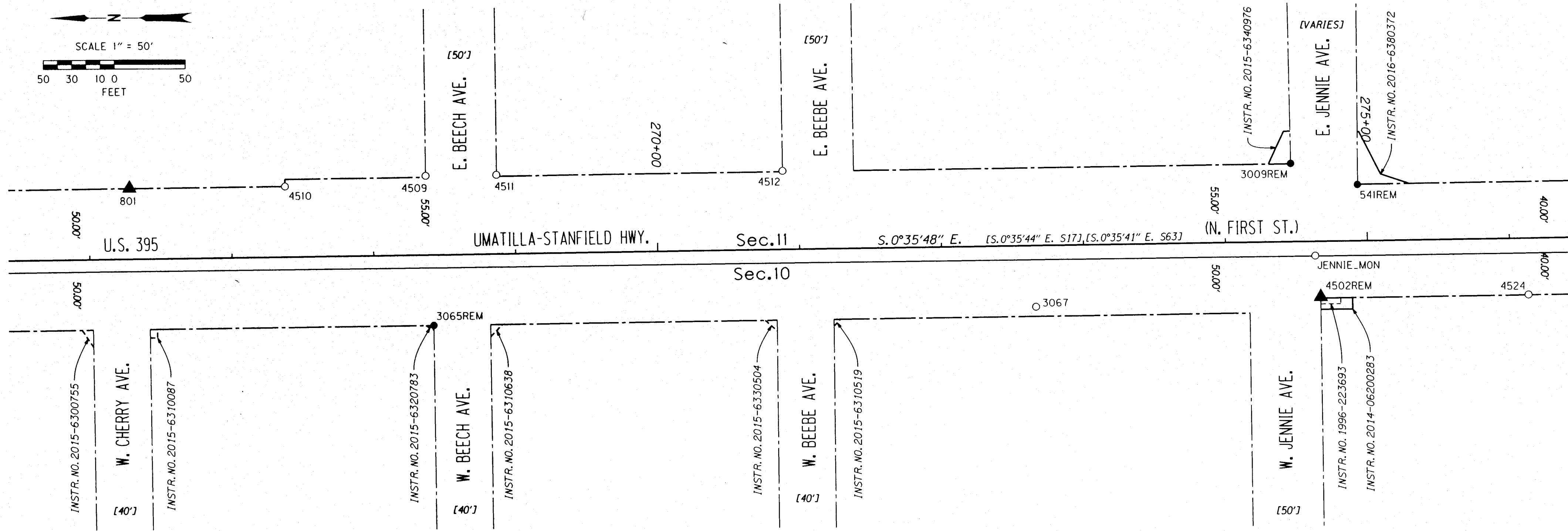
CONTINUED ON SHEET 10

NE 1/4 Section 10, T.4 N., R.28 E., W.M.  
 NW 1/4 Section 11, T.4 N., R.28 E., W.M.



CONTINUED ON SHEET 9

CONTINUED ON SHEET 11



LEGEND

▲	SET NETWORK POINT	—	BOUNDARY OF NEW EASEMENT FOR HWY. R/W PURPOSES	—	SECTION LINES
○	FOUND MONUMENTS	---	BOUNDARY OF NEW EASEMENT	—	R/W CENTERLINE
●	SET MONUMENT	---	BOUNDARY OF EXTG. EASEMENT	---	HWY. R/W BOUNDARY
[ ]	= SEE SHT. 1 REFERENCES	---	BOUNDARY OF EXTG. EASEMENT	---	OTHER R/W BOUNDARY

EASEMENT NOTE

EASEMENT BOUNDARIES SHOWN HEREON ARE ONLY FOR GRAPHICAL REPRESENTATION. THE SAID BOUNDARIES ARE PLACED ALONG THE CENTERLINE DESCRIBED BY THIS SURVEY AND BY THE STATIONING DESCRIBED IN ODOT DWG. NOS. 11B-07-21 & 11B-07-46.

SET MONUMENT TABLE

POINT (ID) NUMBER	NORTHING	EASTING	STATION	OFFSET	DATE	DESCRIPTION
541REM	166073.63	800479.49	274+93.51	39.75 LT	7/26/2016	SET R.R. SPIKE IN NEW PVMT. W/ PUNCH, MKD.: "ODOT 541", RE-MONUMENTATION. [P6][P7]
801	166938.55	800480.97	266+28.65	50.23 LT	3/23/2016	SET 5/8" X 30" IRON ROD W/ 1-1/2" ALUM. CAP MKD.: "ODOT 801", IN LAWN
3009REM	166120.50	800494.47	274+46.79	55.21 LT	6/29/2016	SET 1-1/4" COPPER DISC IN SDWK. MKD.: "ODOT 3009", RE-MONUMENTATION. [S55]
3065REM	166724.56	800383.03	268+41.61	49.93 RT	3/24/2016	SET 1-1/4" COPPER DISC IN SDWK. RAMP MKD.: "ODOT 3065", RE-MONUMENTATION. [S4][S10][S19][S30]
4502REM	166099.66	800400.30	274+66.65	39.17 RT	7/29/2016	SET 1-1/4" COPPER DISC IN SDWK. MKD.: "ODOT 4502", RE-MONUMENTATION OF FD. (3/21/2016) 1-1/2" YELLOW PL. CAP MKD.: "EDWARDS 951". [S49]

RECOVERED MONUMENT TABLE

POINT (ID) NUMBER	NORTHING	EASTING	STATION	OFFSET	DATE	DESCRIPTION
3067	166300.34	800394.24	272+65.92	43.14 RT	3/28/2016	FD. "PK" NAIL IN PVMT., 10" BEHIND SDWK. NEAR BLDG. ENTRY. [S30]
4509	166729.95	800489.06	268+37.32	56.15 LT	4/22/2016	FD. 5/8" IRON ROD W/ DAMAGED 1-1/2" YELLOW PL. CAP, IN PARKING LOT. [S41]
4510	166829.07	800481.96	267+38.13	50.08 LT	4/22/2016	FD. 1/2" IRON ROD, NO CAP, IN LANDSCAPING. [S3][S41][S51][P3]
4511	166680.11	800489.49	268+87.16	56.06 LT	4/22/2016	FD. 5/8" IRON ROD, NO CAP, IN LAWN, BENT NORTHERLY. [S36]
4512	166478.50	800491.12	270+88.78	55.59 LT	4/22/2016	FD. 1-1/2" YELLOW PL. CAP MKD.: "MCKINNIS PLS 2431", 2' BEHIND SDWK. [S36]
4524	165953.37	800401.33	276+12.95	39.66 RT	6/29/2016	FD. 1-1/2" YELLOW PL. CAP MKD.: "EDWARDS 951", IN LAWN BEHIND SDWK. W/ TELEPHONE MANHOLE. [S49]
JENNIE_MON	166103.54	800429.41	274+63.08	10.02 RT	4/13/2016	FD. 2-1/2" BRASS DISC, W/ OFF-CENTER PUNCH, NO OTHER MARKS, ON STEM IN CONC., DOWN 3" IN 10" MON. BOX. [S1][S43][S61][S63]

UMATILLA COUNTY SURVEYOR  
 Date: 2/1/17  
 CT  
 Rec'd By:  
 Survey No.: 17-012-8

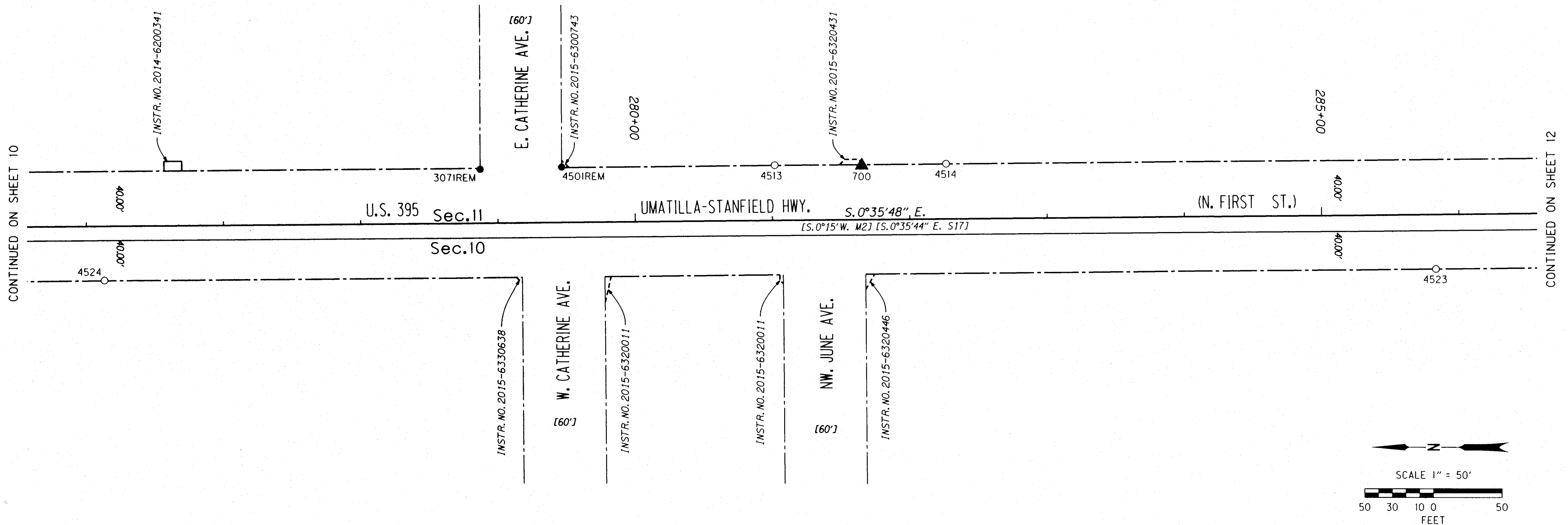
REGISTERED PROFESSIONAL AND SURVEYOR  
 OREGON  
 JULY 13, 1999  
 PETER CORTLAN ELDER  
 51277  
 RENEWS: 12/31/2017

KEY NO.: 18304  
 DRAWN: F. J. SCHAD



OREGON DEPARTMENT OF TRANSPORTATION  
 RE-MONUMENTATION, RECOVERY, RETRACEMENT & NETWORK MAP  
 HERMISTON SIGNAL IMPROVEMENTS & PAVING PROJECTS  
 UMATILLA-STANFIELD HIGHWAY NO. 54 (US395)  
 JOY LANE (MP 3.3) TO FOURTH STREET (MP 6.1)  
 UMATILLA COUNTY, CITY OF HERMISTON  
 O.D.O.T. REGION 5  
 3012 ISLAND AVE.  
 LA GRANDE, OR 97850  
 JANUARY 30, 2017  
 SCALE: 1 in. = 50 ft  
 Sheet 10 of 16 sheets

NE 1/4 Section 10, T.4 N., R.28 E., W.M.  
 NW 1/4 Section 11, T.4 N., R.28 E., W.M.



LEGEND

▲	SET NETWORK POINT	——	BOUNDARY OF NEW EASEMENT FOR HWY. R/W PURPOSES
○	FOUND MONUMENTS	-----	BOUNDARY OF NEW EASEMENT
●	SET MONUMENT	-----	BOUNDARY OF EXTG. EASEMENT
——	SECTION LINES	-----	HWY. R/W BOUNDARY
——○——	R/W CENTERLINE	-----	OTHER R/W BOUNDARY
[ ]	= SEE SHT. 1 REFERENCES		

EASEMENT NOTE

EASEMENT BOUNDARIES SHOWN HEREON ARE ONLY FOR GRAPHICAL REPRESENTATION. THE SAID BOUNDARIES ARE PLACED ALONG THE CENTERLINE DESCRIBED BY THIS SURVEY AND BY THE STATIONING DESCRIBED IN ODOT DWG. NOS. 11B-07-21 & 11B-07-46.

SET MONUMENT TABLE

POINT (ID) NUMBER	NORTHING	EASTING	STATION	OFFSET	DATE	DESCRIPTION
700	165401.82	800486.11	281+65.35	39.37 LT	3/18/2016	SET 1-1/4" COPPER DISC IN SDWK. AT BLDG. ENTRY, MKD.: "ODOT 700".
307IREM	165679.83	800483.13	278+87.32	39.29 LT	3/18/2016	SET 1-1/4" COPPER DISC IN SDWK. MKD.: "ODOT 3071", RE-MONUMENTATION. [P6][P7]
450IREM	165620.45	800484.77	279+46.72	40.31 LT	3/14/2016	SET 1-1/4" COPPER DISC IN SDWK. MKD.: "ODOT 4501", RE-MONUMENTATION OF FD. (2/25/2016) 1-1/2" YELLOW PL. CAP MKD.: "EDWARDS 951". [S22][S59]

RECOVERED MONUMENT TABLE

POINT (ID) NUMBER	NORTHING	EASTING	STATION	OFFSET	DATE	DESCRIPTION
4513	165465.25	800486.33	281+01.92	40.25 LT	4/22/2016	FD. 1-1/2" YELLOW PL. CAP MKD.: "OR PLS 1106 WA PLS 37372", 2" BEHIND SDWK. [S31]
4514	165340.39	800487.64	282+26.79	40.26 LT	4/22/2016	FD. 1-1/2" YELLOW PL. CAP MKD.: "OR PLS 1106 WA PLS 37372", AT END OF RETAINING WALL. [S31]
4523	164983.43	800411.21	285+82.94	39.88 RT	5/17/2016	FD. 5/8" IRON ROD, NO CAP, 0.3' N. OF POLE. [S42]
4524	165953.37	800401.33	276+12.95	39.66 RT	6/29/2016	FD. 1-1/2" YELLOW PL. CAP MKD.: "EDWARDS 951", IN LAWN BEHIND SDWK. W/ TELEPHONE MANHOLE. [S49]

UMATILLA COUNTY  
 SURVEYOR  
 2/1/17  
 Date:  
 Rec'd By: CT  
 Survey No.: 17-012-8

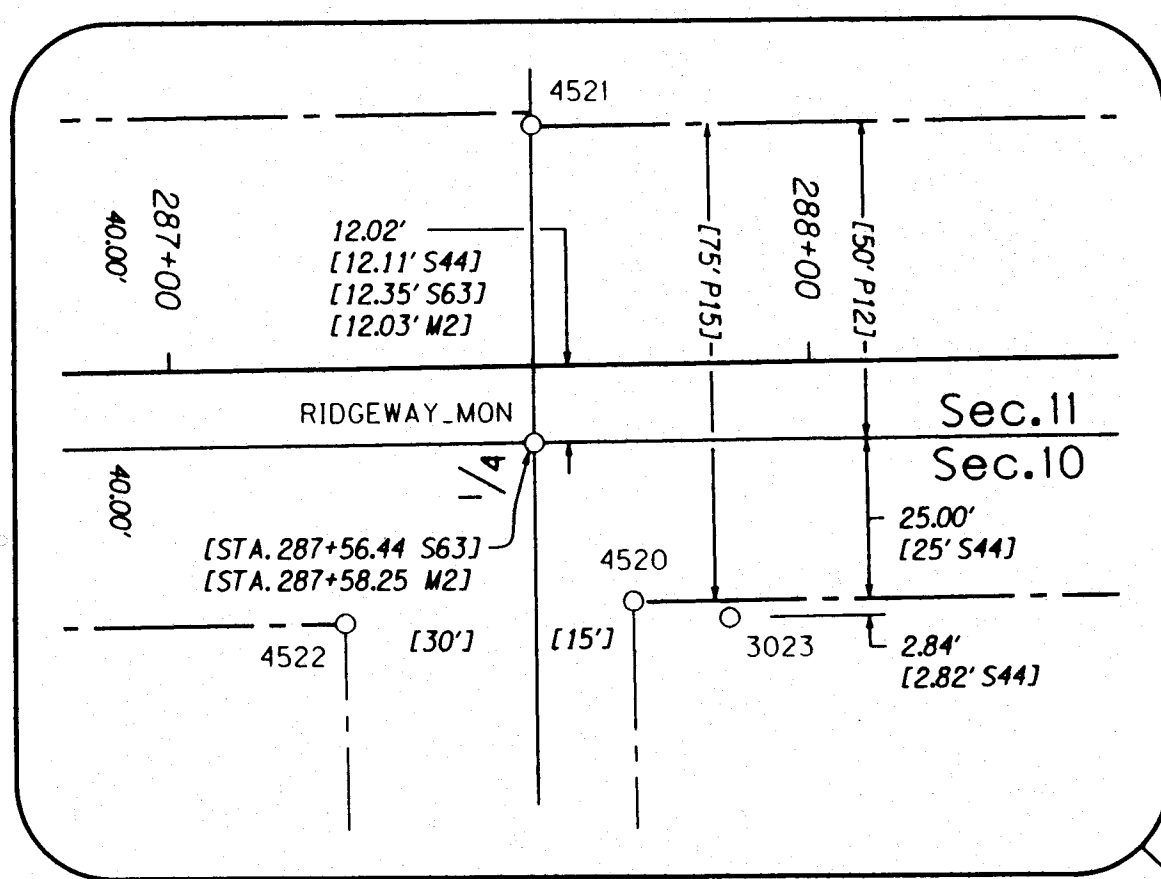
REGISTERED  
 PROFESSIONAL  
 LAND SURVEYOR  
  
 OREGON  
 JULY 13, 1999  
 PETER CORTLAN ELDER  
 51277  
 RENEWS: 12/31/2017

KEY NO.: 18304  
 DRAWN: F. J. SCHAD

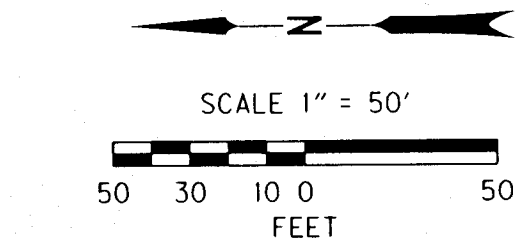
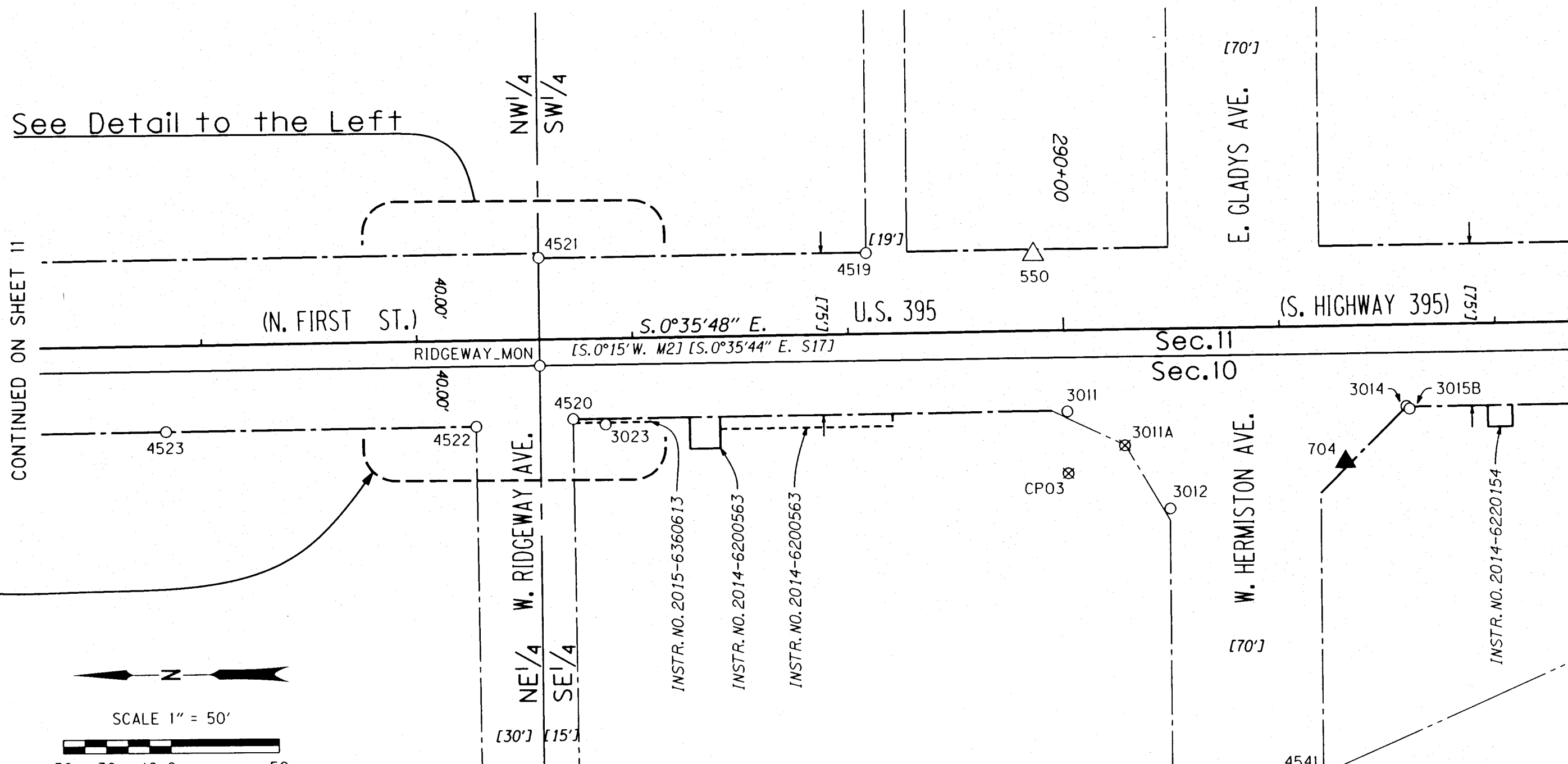
ENGLISH

OREGON DEPARTMENT OF TRANSPORTATION  
 RE-MONUMENTATION, RECOVERY, RETRACEMENT & NETWORK MAP  
 HERMISTON SIGNAL IMPROVEMENTS & PAVING PROJECTS  
 UMATILLA-STANFIELD HIGHWAY NO. 54 (US395)  
 JOY LANE (MP 3.3) TO FOURTH STREET (MP 6.1)  
 UMATILLA COUNTY, CITY OF HERMISTON  
 O.D.O.T. REGION 5  
 3012 ISLAND AVE.  
 LA GRANDE, OR 97850  
 JANUARY 30, 2017  
 SCALE: 1 in. = 50 ft  
 Sheet 11 of 16 sheets

NE 1/4 & SE 1/4 Section 10, T.4 N., R.28 E., W.M.  
 NW 1/4 & SW 1/4 Section 11, T.4 N., R.28 E., W.M.



DETAIL



LEGEND

	FOUND MONUMENT USED AS A NETWORK POINT		BOUNDARY OF NEW EASEMENT FOR HWY. R/W PURPOSES
	SET NETWORK POINT		BOUNDARY OF NEW EASEMENT
	FOUND MONUMENTS		R/W CENTERLINE
	DESTROYED MONUMENT LOCATION		HWY. R/W BOUNDARY
	SECTION LINES		OTHER R/W BOUNDARY
	1/4 SECTION LINES		R.R. R/W BOUNDARY
[ ]	= SEE SHT. I REFERENCES		

EASEMENT NOTE

EASEMENT BOUNDARIES SHOWN HEREON ARE ONLY FOR GRAPHICAL REPRESENTATION. THE SAID BOUNDARIES ARE PLACED ALONG THE CENTERLINE DESCRIBED BY THIS SURVEY AND BY THE STATIONING DESCRIBED IN ODOT DWG. NOS. 11B-07-21 & 11B-07-46.

SET MONUMENT TABLE

POINT (ID) NUMBER	NORTHING	EASTING	STATION	OFFSET	DATE	DESCRIPTION
704	164436.35	800393.53	291+29.80	63.26 RT	3/17/2016	SET 5/8" X 30" IRON ROD W/ 1-1/2" ALUM. CAP MKD.: "ODOT 704", W/ CENTER PUNCH IN LANDSCAPING BERM.

RECOVERED MONUMENT TABLE

POINT (ID) NUMBER	NORTHING	EASTING	STATION	OFFSET	DATE	DESCRIPTION
550	164580.76	800490.72	289+86.41	35.43 LT	2/3/2016	FD. 1-1/2" O.S.H.D. ALUM. CAP W/ CENTER PUNCH, MKD.: "TRAV PT 2 1994", IN CURB IN FRONT OF GAS STATION. [S17]
3011	164565.33	800417.98	290+01.08	37.47 RT	3/23/2016	FD. CONC. NAIL SHAFT IN TOP OF RETAINING WALL BEHIND SDWK. [S44]
3012	164517.81	800372.20	290+48.12	83.74 RT	3/23/2016	FD. CONC. NAIL IN TOP OF RETAINING WALL BEHIND SDWK. [S44]
3014	164408.11	800419.43	291+58.31	37.66 RT	3/23/2016	FD. CONC. NAIL W/ 1-1/4" WASHER AT BACK OF SDWK., ILLEGIBLE. [S26][S45][S48]
3015B	164407.94	800419.28	291+58.48	37.81 RT	3/23/2016	FD. 'PK' NAIL IN EDGE OF PVMT., 1" BEHIND SDWK. [S26]
3023	164779.45	800413.36	287+86.93	39.86 RT	5/16/2016	FD. 1-1/2" YELLOW PL. CAP MKD.: "EDWARDS 951", 2.6' BEHIND SDWK. [S44]
4519	164658.34	800492.05	289+08.85	37.57 LT	5/16/2016	FD. 1-1/2" YELLOW PL. CAP MKD.: "EDWARDS 951", IN SCHOOL YARD, 1.2' E. OF WALL. [S58][P9]
4520	164794.49	800416.01	287+71.92	37.05 RT	5/17/2016	FD. 'MAG' NAIL W/ 1-1/4" WASHER MKD.: "LS48509 PLS", IN PVMT. [S44][P8]
4521	164810.02	800490.95	287+57.17	38.05 LT	5/17/2016	FD. BROKEN SHAFT OF CONC. NAIL IN SDWK. W/ OLD CAULKING. [S58][P9]
4522	164839.47	800412.73	287+26.90	39.86 RT	5/17/2016	FD. 'PK' NAIL IN PVMT. BEHIND SDWK., N. OF NEARBY ELECTRIC METERS. [S44]
4523	164983.43	800411.21	285+82.94	39.88 RT	5/17/2016	FD. 5/8" IRON ROD, NO CAP, 0.3' N. OF POLE. [S42]
4541	164447.42	800248.99	291+17.22	207.68 RT	9/26/2016	FD. 'MAG' NAIL W/ 1-1/4" WASHER MKD.: "LS48509", IN PARKING LOT PVMT., 3.3' BEHIND SDWK. [S48]
RIDGEWAY_MON	164809.83	800440.88	287+56.84	12.02 RT	4/13/2016	FD. 2-1/2" BRASS DISC, W/ OFF-CENTER PUNCH, NO OTHER MARKS, ON STEM IN CONC., DOWN 4" IN 10" MON. BOX. [S5][S6][S13][S14][S43][S61][S63][M1][M2][M6]

UMATILLA COUNTY  
 SURVEYOR  
 2/1/17  
 Date:  
 CT  
 Rec'd By:  
 17-012-8  
 Survey No.:

REGISTERED  
 PROFESSIONAL  
 LAND SURVEYOR  
  
 OREGON  
 JULY 13, 1999  
 PETER CORTLAN ELDER  
 51277  
 RENEWS: 12/31/2017

KEY NO.: 18304  
 DRAWN: F. J. SCHAD

OREGON DEPARTMENT OF TRANSPORTATION  
 RE-MONUMENTATION, RECOVERY, RETRACEMENT & NETWORK MAP  
 HERMISTON SIGNAL IMPROVEMENTS & PAVING PROJECTS  
 UMATILLA-STANFIELD HIGHWAY NO. 54 (US395)  
 JOY LANE (MP 3.3) TO FOURTH STREET (MP 6.1)  
 UMATILLA COUNTY, CITY OF HERMISTON  
 O.D.O.T. REGION 5  
 3012 ISLAND AVE.  
 LA GRANDE, OR 97850  
 JANUARY 30, 2017  
 SCALE: 1 in. = 50 ft  
 Sheet 12 of 16 sheets



CONTINUED ON SHEET 13

O. W. R. & N. CO. (U. P. R. R.)



SE<sup>1</sup>/<sub>4</sub> Section 10, T.4 N., R.28 E., W.M.  
 SW<sup>1</sup>/<sub>4</sub> Section 11, T.4 N., R.28 E., W.M.

SET MONUMENT TABLE

POINT (ID) NUMBER	NORTHING	EASTING	STATION	OFFSET	DATE	DESCRIPTION
706	164044.87	800494.58	295+22.53	33.69 LT	3/17/2016	SET 1-1/4" COPPER DISC IN SDWK. MKD.: "ODOT 706", NEAR BACK ENTRY OF STONE BLDG., 7.5' BEHIND CURB.
707	163825.84	800464.76	297+33.06	36.30 RT	3/17/2016	SET 1-1/4" COPPER DISC IN SDWK. MKD.: "ODOT 707", NEAR SIGNAL CABINETS.

RECOVERED MONUMENT TABLE

POINT (ID) NUMBER	NORTHING	EASTING	STATION	OFFSET	DATE	DESCRIPTION
572	163769.29	800571.74	298+25.74	40.07 LT	3/22/2016	FD. 1-1/2" YELLOW PL. CAP, ILLEGIBLE, IN PVMT. AT S.E. CORNER US395 & HURLBURT. [S23][P4][P12]
3014	164408.11	800419.43	291+58.31	37.66 RT	3/23/2016	FD. CONC. NAIL W/ 1-1/4" WASHER AT BACK OF SDWK., ILLEGIBLE. [S26][S45][S48]
3015B	164407.94	800419.28	291+58.48	37.81 RT	3/23/2016	FD. 'PK' NAIL IN EDGE OF PVMT., 1" BEHIND SDWK. [S26]
3016	164201.33	800421.31	293+65.10	37.93 RT	3/23/2016	FD. CONC. NAIL W/ 1-1/4" WASHER, ILLEGIBLE. [S45][S48]
3017	164185.94	800411.38	293+80.38	48.02 RT	3/23/2016	FD. CONC. NAIL W/ RUSTED WASHER, ON SIGNAL POLE FOOTING. [S45][S48]
3018	163782.18	800580.04	298+17.36	52.91 LT	3/22/2016	FD. 1-1/2" YELLOW PL. CAP, ILLEGIBLE, IN PVMT. [S23][P4][P12]
3019	163782.24	800609.18	298+29.19	79.54 LT	3/22/2016	FD. R.R. SPIKE IN PVMT., W/ PUNCH, MKD.: "951", NEAR POLE. [S23][P4][P12]
3081	163660.31	800620.39	299+45.08	40.03 LT	9/26/2016	FD. 1-1/2" YELLOW PL. CAP, ILLEGIBLE, IN PVMT., 13" BEHIND SDWK. [S23][P4][P12]
3082	163641.34	800628.85	299+65.86	40.02 LT	9/26/2016	FD. 'PK' NAIL IN PVMT., 12" BEHIND SDWK. [S23][P4][P12]
4538	163925.10	800443.42	296+36.65	30.18 RT	8/3/2016	FD. ALUM. SCREW IN LEAD PLUG IN TOP OF HWY. CURB. [M2]
4539	163898.32	800450.39	296+63.07	29.13 RT	8/3/2016	FD. BRASS SCREW IN LEAD PLUG IN TOP OF HWY. CURB. [M2]
LOCUST_MON	164150.74	800446.34	294+15.95	13.43 RT	4/13/2016	FD. 2-1/2" BRASS DISC, W/ OFF-CENTER PUNCH, NO OTHER MARKS, ON STEM IN CONC., DOWN 6" IN 10" MON. BOX. [S63][P12]

LEGEND

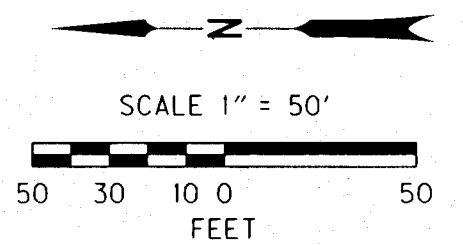
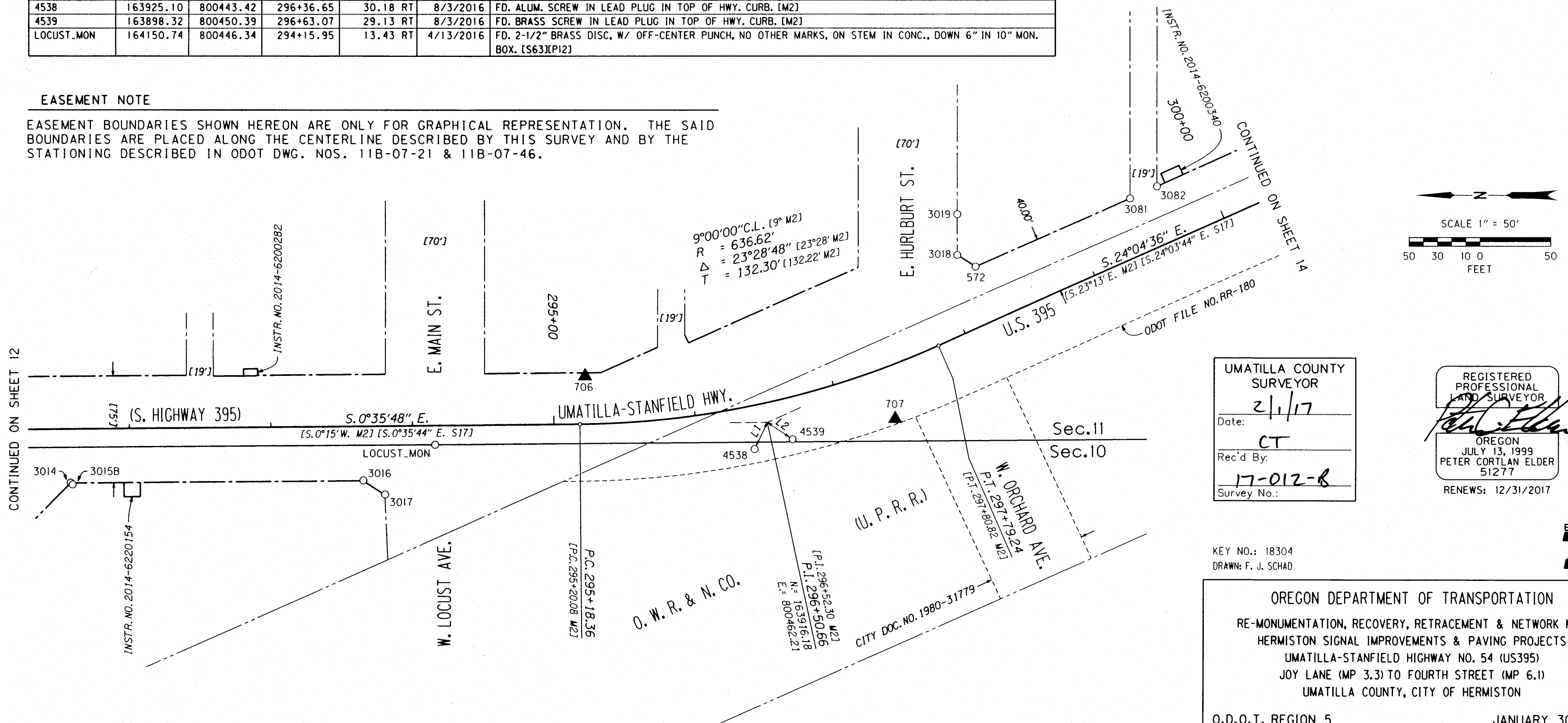
▲	SET NETWORK POINT	——	BOUNDARY OF NEW EASEMENT FOR HWY. R/W PURPOSES
○	FOUND MONUMENTS	-----	BOUNDARY OF EXTG. EASEMENT
—	SECTION LINES	———	HWY. R/W BOUNDARY
—○—	R/W CENTERLINE	-----	OTHER R/W BOUNDARY
[ ]	= SEE SHT. 1 REFERENCES	-----	R.R. R/W BOUNDARY

LINE TABLE

LINE NO.	DISTANCE
L1	20.80' [20.80' M2]
L2	21.42' [21.42' M2]

EASEMENT NOTE

EASEMENT BOUNDARIES SHOWN HEREON ARE ONLY FOR GRAPHICAL REPRESENTATION. THE SAID BOUNDARIES ARE PLACED ALONG THE CENTERLINE DESCRIBED BY THIS SURVEY AND BY THE STATIONING DESCRIBED IN ODOT DWG. NOS. 11B-07-21 & 11B-07-46.



UMATILLA COUNTY SURVEYOR  
 2/1/17  
 Date:  
 CT  
 Rec'd By:  
 17-012-8  
 Survey No.:

REGISTERED PROFESSIONAL LAND SURVEYOR  
*Peter Cortlan Elder*  
 OREGON  
 JULY 13, 1999  
 PETER CORTLAN ELDER  
 51277  
 RENEWS: 12/31/2017

KEY NO.: 18304  
 DRAWN: F. J. SCHAD

OREGON DEPARTMENT OF TRANSPORTATION  
 RE-MONUMENTATION, RECOVERY, RETRACEMENT & NETWORK MAP  
 HERMISTON SIGNAL IMPROVEMENTS & PAVING PROJECTS  
 UMATILLA-STANFIELD HIGHWAY NO. 54 (US395)  
 JOY LANE (MP 3.3) TO FOURTH STREET (MP 6.1)  
 UMATILLA COUNTY, CITY OF HERMISTON

O.D.O.T. REGION 5  
 3012 ISLAND AVE.  
 LA GRANDE, OR 97850

JANUARY 30, 2017  
 SCALE: 1 in. = 50 ft  
 Sheet 13 of 16 sheets



SW 1/4 Section 11, T.4 N., R.28 E., W.M.

SET MONUMENT TABLE

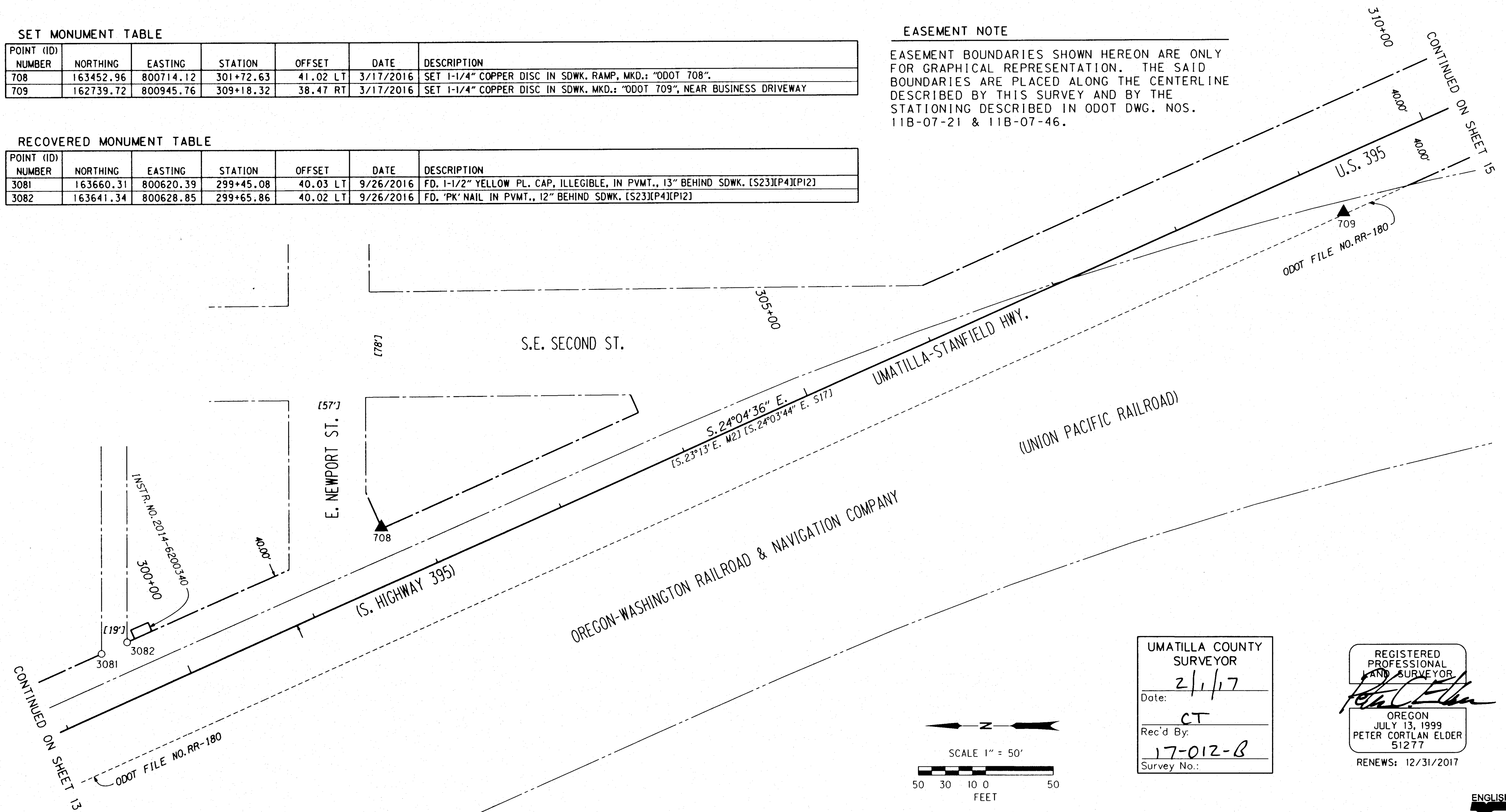
POINT (ID) NUMBER	NORTHING	EASTING	STATION	OFFSET	DATE	DESCRIPTION
708	163452.96	800714.12	301+72.63	41.02 LT	3/17/2016	SET 1-1/4" COPPER DISC IN SDWK. RAMP, MKD.: "ODOT 708".
709	162739.72	800945.76	309+18.32	38.47 RT	3/17/2016	SET 1-1/4" COPPER DISC IN SDWK. MKD.: "ODOT 709", NEAR BUSINESS DRIVEWAY

RECOVERED MONUMENT TABLE

POINT (ID) NUMBER	NORTHING	EASTING	STATION	OFFSET	DATE	DESCRIPTION
3081	163660.31	800620.39	299+45.08	40.03 LT	9/26/2016	FD. 1-1/2" YELLOW PL. CAP, ILLEGIBLE, IN PVMT., 13" BEHIND SDWK. [S23][P4][P12]
3082	163641.34	800628.85	299+65.86	40.02 LT	9/26/2016	FD. 'PK' NAIL IN PVMT., 12" BEHIND SDWK. [S23][P4][P12]

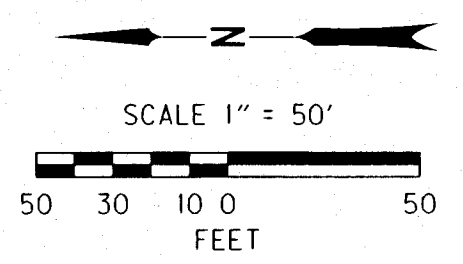
EASEMENT NOTE

EASEMENT BOUNDARIES SHOWN HEREON ARE ONLY FOR GRAPHICAL REPRESENTATION. THE SAID BOUNDARIES ARE PLACED ALONG THE CENTERLINE DESCRIBED BY THIS SURVEY AND BY THE STATIONING DESCRIBED IN ODOT DWG. NOS. 11B-07-21 & 11B-07-46.



UMATILLA COUNTY  
SURVEYOR  
Date: 2/1/17  
Rec'd By: CT  
Survey No.: 17-012-B

REGISTERED  
PROFESSIONAL  
AND SURVEYOR  
*Peter Cortlan Elder*  
OREGON  
JULY 13, 1999  
PETER CORTLAN ELDER  
51277  
RENEWS: 12/31/2017

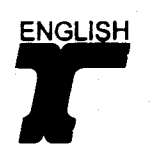


LEGEND

▲	SET NETWORK POINT	—○—	R/W CENTERLINE
○	FOUND MONUMENTS	— — — — —	HWY. R/W BOUNDARY
—	BOUNDARY OF NEW EASEMENT FOR HWY. R/W PURPOSES	— · — · —	OTHER R/W BOUNDARY
- - - - -	BOUNDARY OF EXTG. EASEMENT	— · — · —	R.R. R/W BOUNDARY
[ ]	= SEE SHT. 1 REFERENCES		

KEY NO.: 18304  
DRAWN: F. J. SCHAD

OREGON DEPARTMENT OF TRANSPORTATION  
RE-MONUMENTATION, RECOVERY, RETRACEMENT & NETWORK MAP  
HERMISTON SIGNAL IMPROVEMENTS & PAVING PROJECTS  
UMATILLA-STANFIELD HIGHWAY NO. 54 (US395)  
JOY LANE (MP 3.3) TO FOURTH STREET (MP 6.1)  
UMATILLA COUNTY, CITY OF HERMISTON  
O.D.O.T. REGION 5  
3012 ISLAND AVE.  
LA GRANDE, OR 97850  
JANUARY 30, 2017  
SCALE: 1 in. = 50 ft  
Sheet 14 of 16 sheets



SW<sup>1</sup>/<sub>4</sub> Section 11, T.4 N., R.28 E., W.M.  
 NW<sup>1</sup>/<sub>4</sub> Section 14, T.4 N., R.28 E., W.M.

SET MONUMENT TABLE

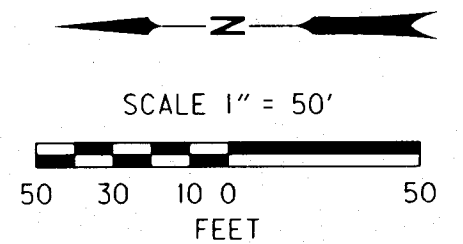
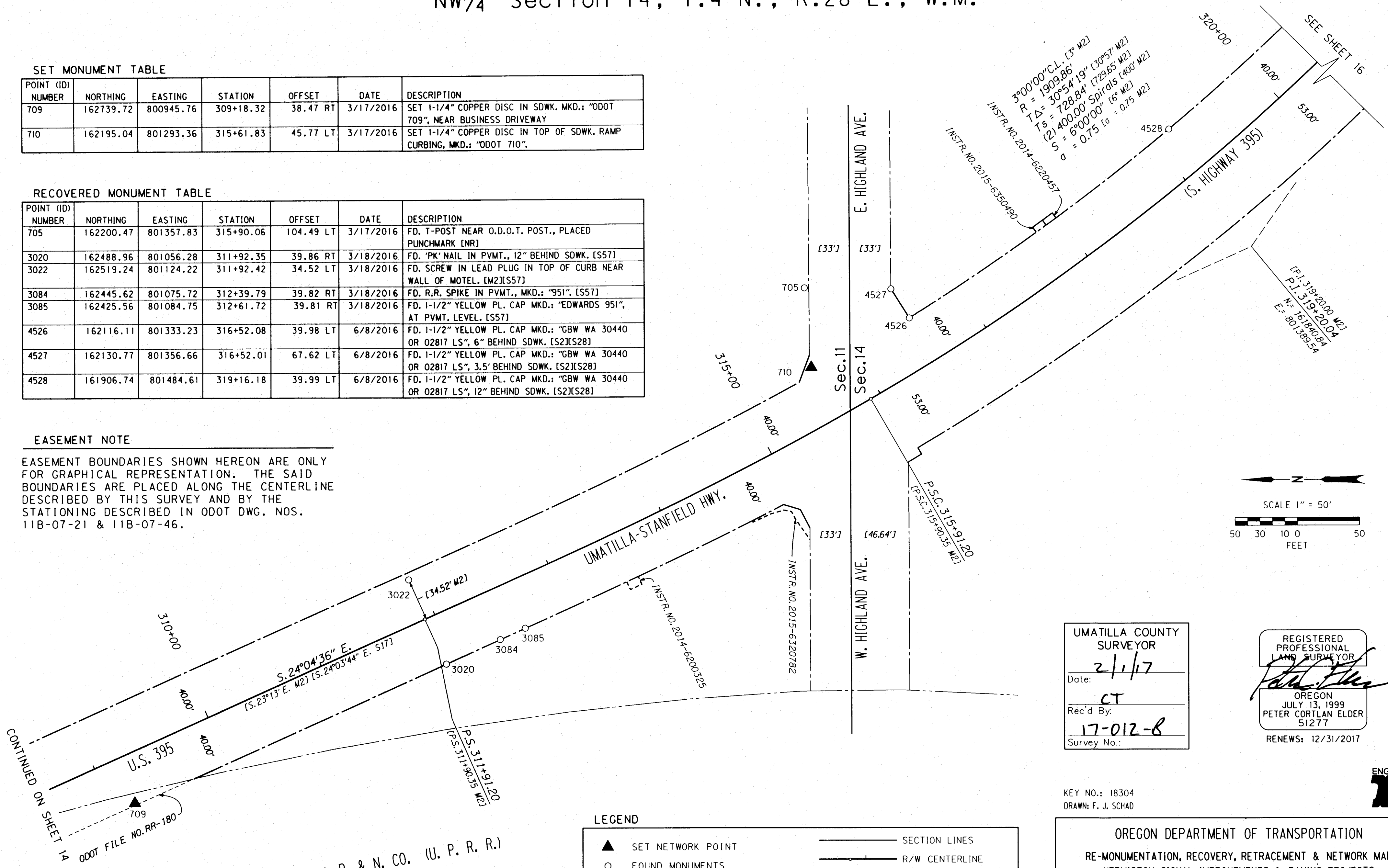
POINT (ID) NUMBER	NORTHING	EASTING	STATION	OFFSET	DATE	DESCRIPTION
709	162739.72	800945.76	309+18.32	38.47 RT	3/17/2016	SET 1-1/4" COPPER DISC IN SDWK. MKD.: "ODOT 709", NEAR BUSINESS DRIVEWAY
710	162195.04	801293.36	315+61.83	45.77 LT	3/17/2016	SET 1-1/4" COPPER DISC IN TOP OF SDWK. RAMP CURBING, MKD.: "ODOT 710".

RECOVERED MONUMENT TABLE

POINT (ID) NUMBER	NORTHING	EASTING	STATION	OFFSET	DATE	DESCRIPTION
705	162200.47	801357.83	315+90.06	104.49 LT	3/17/2016	FD. T-POST NEAR O.D.O.T. POST., PLACED PUNCHMARK [NR]
3020	162488.96	801056.28	311+92.35	39.86 RT	3/18/2016	FD. "PK" NAIL IN PVMT., 12" BEHIND SDWK. [S57]
3022	162519.24	801124.22	311+92.42	34.52 LT	3/18/2016	FD. SCREW IN LEAD PLUG IN TOP OF CURB NEAR WALL OF MOTEL. [M2][S57]
3084	162445.62	801075.72	312+39.79	39.82 RT	3/18/2016	FD. R.R. SPIKE IN PVMT., MKD.: "951". [S57]
3085	162425.56	801084.75	312+61.72	39.81 RT	3/18/2016	FD. 1-1/2" YELLOW PL. CAP MKD.: "EDWARDS 951", AT PVMT. LEVEL. [S57]
4526	162116.11	801333.23	316+52.08	39.98 LT	6/8/2016	FD. 1-1/2" YELLOW PL. CAP MKD.: "GBW WA 30440 OR 02817 LS", 6" BEHIND SDWK. [S2][S28]
4527	162130.77	801356.66	316+52.01	67.62 LT	6/8/2016	FD. 1-1/2" YELLOW PL. CAP MKD.: "GBW WA 30440 OR 02817 LS", 3.5' BEHIND SDWK. [S2][S28]
4528	161906.74	801484.61	319+16.18	39.99 LT	6/8/2016	FD. 1-1/2" YELLOW PL. CAP MKD.: "GBW WA 30440 OR 02817 LS", 12" BEHIND SDWK. [S2][S28]

EASEMENT NOTE

EASEMENT BOUNDARIES SHOWN HEREON ARE ONLY FOR GRAPHICAL REPRESENTATION. THE SAID BOUNDARIES ARE PLACED ALONG THE CENTERLINE DESCRIBED BY THIS SURVEY AND BY THE STATIONING DESCRIBED IN ODOT DWG. NOS. 11B-07-21 & 11B-07-46.



UMATILLA COUNTY SURVEYOR  
 2/1/17  
 Date:  
 CT  
 Rec'd By:  
 17-012-8  
 Survey No.:

REGISTERED PROFESSIONAL LAND SURVEYOR  
*Peter Cortlan Elder*  
 OREGON  
 JULY 13, 1999  
 PETER CORTLAN ELDER  
 51277  
 RENEWS: 12/31/2017

KEY NO.: 18304  
 DRAWN: F. J. SCHAD

LEGEND

▲	SET NETWORK POINT	—	SECTION LINES
○	FOUND MONUMENTS	—○—	R/W CENTERLINE
—	BOUNDARY OF NEW EASEMENT FOR HWY. R/W PURPOSES	---	HWY. R/W BOUNDARY
---	BOUNDARY OF NEW EASEMENT	----	OTHER R/W BOUNDARY
----	BOUNDARY OF EXTG. EASEMENT	----	R.R. R/W BOUNDARY
[ ]	= SEE SHT. 1 REFERENCES		

OREGON DEPARTMENT OF TRANSPORTATION  
 RE-MONUMENTATION, RECOVERY, RETRACEMENT & NETWORK MAP  
 HERMISTON SIGNAL IMPROVEMENTS & PAVING PROJECTS  
 UMATILLA-STANFIELD HIGHWAY NO. 54 (US395)  
 JOY LANE (MP 3.3) TO FOURTH STREET (MP 6.1)  
 UMATILLA COUNTY, CITY OF HERMISTON

O.D.O.T. REGION 5  
 3012 ISLAND AVE.  
 LA GRANDE, OR 97850

JANUARY 30, 2017  
 SCALE: 1 in. = 50 ft  
 Sheet 15 of 16 sheets



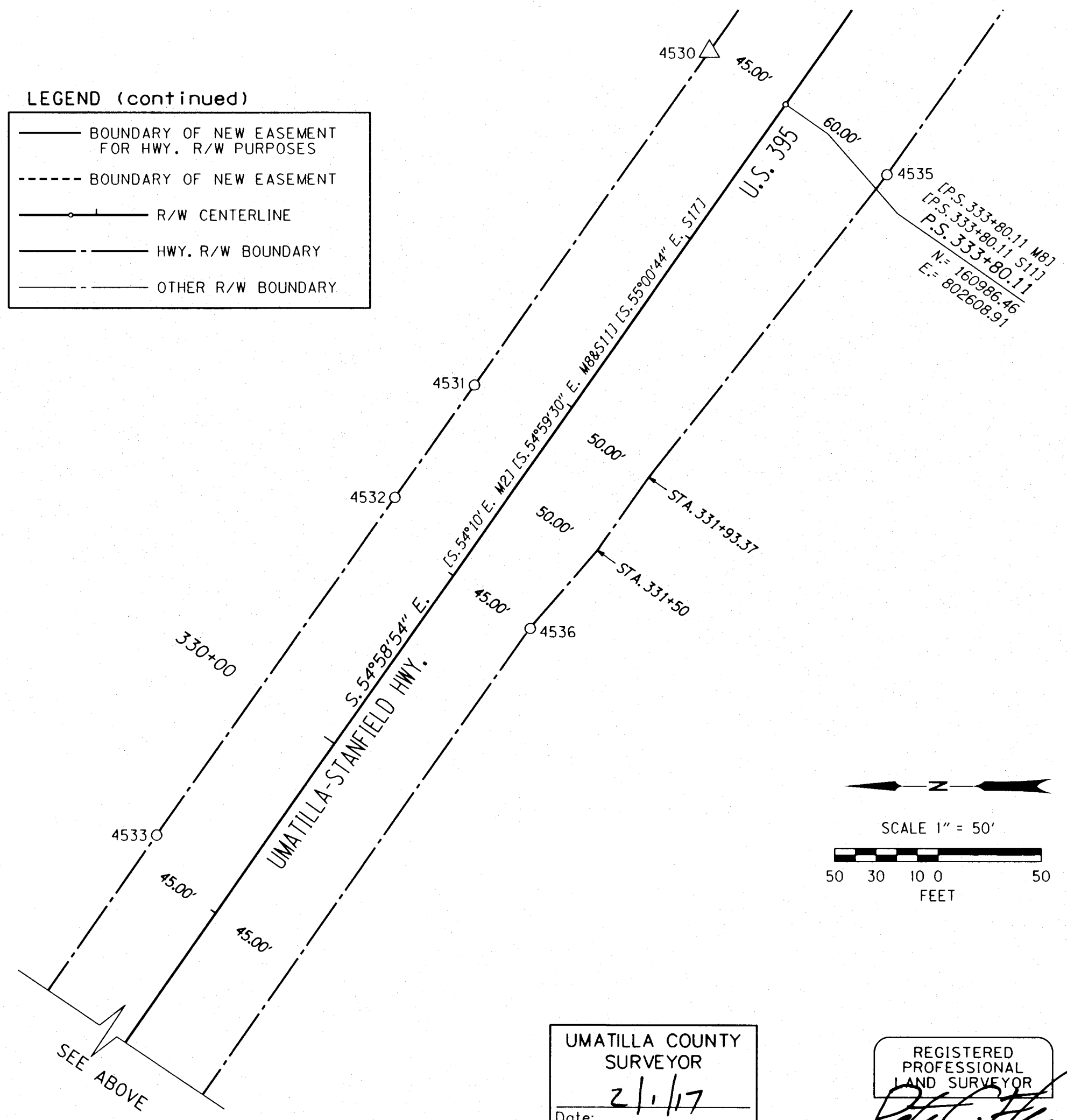
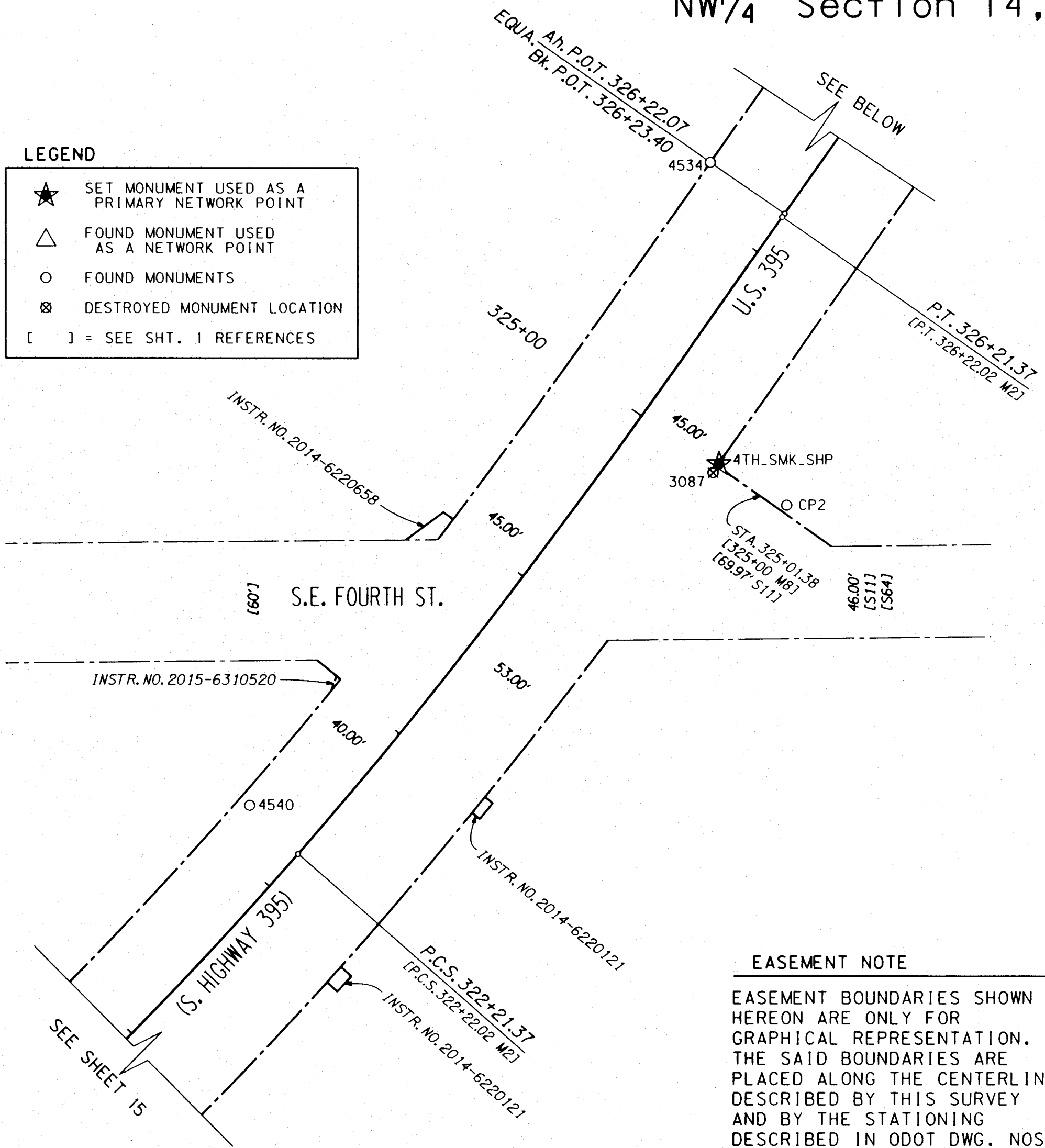
NW 1/4 Section 14, T.4 N., R.28 E., W.M.

LEGEND

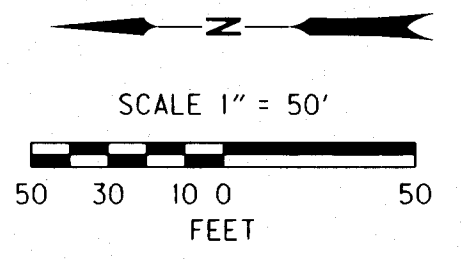
- ★ SET MONUMENT USED AS A PRIMARY NETWORK POINT
- △ FOUND MONUMENT USED AS A NETWORK POINT
- FOUND MONUMENTS
- ⊗ DESTROYED MONUMENT LOCATION
- [ ] = SEE SHT. I REFERENCES

LEGEND (continued)

- BOUNDARY OF NEW EASEMENT FOR HWY. R/W PURPOSES
- - - BOUNDARY OF NEW EASEMENT
- R/W CENTERLINE
- - - HWY. R/W BOUNDARY
- - - OTHER R/W BOUNDARY



**EASEMENT NOTE**  
 EASEMENT BOUNDARIES SHOWN HEREON ARE ONLY FOR GRAPHICAL REPRESENTATION. THE SAID BOUNDARIES ARE PLACED ALONG THE CENTERLINE DESCRIBED BY THIS SURVEY AND BY THE STATIONING DESCRIBED IN ODOT DWG. NOS. 11B-07-21 & 11B-07-46.



SET MONUMENT TABLE

POINT (ID) NUMBER	NORTHING	EASTING	STATION	OFFSET	DATE	DESCRIPTION
4TH_SMK_SHP	161453.99	801863.17	325+02.83	45.40 RT	2/26/2016	SET 5/8" X 30" IRON ROD W/ 1-1/2" ALUM. CAP W/ CENTER PUNCH, MKD.: "ODOT", AT EDGE OF PARKING LOT PVMT.

RECOVERED MONUMENT TABLE

POINT (ID) NUMBER	NORTHING	EASTING	STATION	OFFSET	DATE	DESCRIPTION
4530	161023.31	802634.73	333+80.11	45.00 LT	6/9/2016	FD. 1-1/2" O.S.H.D. ALUM. CAP W/ CENTER PUNCH, MKD.: "LS 1068", ON SLOPE 5' BEHIND SDWK., BESIDE R/W POST. [S11][M8]
4531	161137.06	802472.42	331+81.91	45.02 LT	6/9/2016	FD. 1-1/2" DAMAGED YELLOW PL. CAP, NO MARKINGS, IN DRIVEWAY PVMT., 4.7' BEHIND SDWK. [S32]
4532	161175.54	802417.47	331+14.82	45.00 LT	6/10/2016	FD. 5/8" IRON ROD W/ 1-1/2" DAMAGED YELLOW PL. CAP SLID DOWN ROD, BENT TOWARD ROAD, 4.8' BEHIND SDWK. [S32][P13]
4533	161290.61	802253.18	329+14.24	44.96 LT	6/10/2016	FD. "PK" NAIL IN PMVT. OF BUSINESS ENTRANCE. [NR]
4534	161458.30	802013.92	326+23.40	45.00 LT	6/14/2016	FD. 5/8" IRON ROD, NO CAP, UNDER ROOT WAD OF PINE BUSH, R/W POST BEARS NORTHERLY 3.5'. [M8][S11][S21][P13]
4535	160937.35	802574.56	333+80.16	59.92 RT	6/14/2016	FD. 1-1/2" O.S.H.D. ALUM. CAP W/ CENTER PUNCH, ILLEGIBLE, R/W POST BEARS NORTHERLY 2'. [M8][S11]
4536	161109.99	802353.67	331+01.48	45.29 RT	6/16/2016	FD. 1-1/2" O.S.H.D. ALUM. CAP W/ OFF-CENTER PUNCH, ILLEGIBLE, R/W POST BEARS NORTHERLY 2'. [M8][S11]
4540	161687.36	801691.51	322+23.97	34.08 LT	8/4/2016	FD. SCREW IN LEAD PLUG IN TOP OF HWY. CURB. [M2]
CP2	161420.48	801842.37	325+05.35	84.76 RT	4/5/2016	FD. "PK" NAIL IN PARKING LOT PVMT. [S63]

UMATILLA COUNTY SURVEYOR  
 2/1/17  
 Date:  
 CT  
 Rec'd By:  
 17-012-B  
 Survey No.:

REGISTERED PROFESSIONAL LAND SURVEYOR  
*Peter Cortlan Elder*  
 OREGON  
 JULY 13, 1999  
 PETER CORTLAN ELDER  
 51277  
 RENEWS: 12/31/2017

KEY NO.: 18304  
 DRAWN: F. J. SCHAD

OREGON DEPARTMENT OF TRANSPORTATION  
 RE-MONUMENTATION, RECOVERY, RETRACEMENT & NETWORK MAP  
 HERMISTON SIGNAL IMPROVEMENTS & PAVING PROJECTS  
 UMATILLA-STANFIELD HIGHWAY NO. 54 (US395)  
 JOY LANE (MP 3.3) TO FOURTH STREET (MP 6.1)  
 UMATILLA COUNTY, CITY OF HERMISTON

O.D.O.T. REGION 5  
 3012 ISLAND AVE.  
 LA GRANDE, OR 97850

JANUARY 30, 2017  
 SCALE: 1 in. = 50 ft  
 Sheet 16 of 16 sheets

