

BASIS OF BEARING

Geodetic North at the witness corner of Sections 18 and 19, Township 2 South, Range 35 East and 13 and 24, Township 2 South Range 34 East of the Willamette Meridian, as determined by GPS observation

SCALE: 1"=500'

LEGEND

- Found 2" iron pipe with 2 1/2" brass cap (unless otherwise specified), set by GLO surveyor L.E. Wilkes in 1917 under special instructions dated Feb. 20, 1917, included in Group No. 29
- Found stone as described
- Found monument as described, marked as per Umatilla County Surveyor monumentation records
- Set 5/8"x30" iron rebar with 2 1/2" aluminum cap, marked as per Umatilla County Monumentation records, filed separately
- Set steel fencepost on line
- Found steel fencepost, set by Survey Number 84-101-B
- Record measurement as per Currin and Noland special contract dated May 4, 1887
- Record measurement as per Rufus Moore, GLO Contract No. 451, dated June 12, 1882
- Record measurement as per L.E. Wilkes, GLO special instructions dated Feb. 20, 1917, included in Group No. 29
- Record measurement as per Survey Number 84-101-B
- Fenceline
- Perpendicular offset and direction of existing fenceline from property line.

REFERENCE MATERIAL

- Umatilla County Monumentation Records
Survey Number 84-101-B
- Field Notes of GLO Contract No. 391, dated July 1, 1881, executed by Jacob C. Cooper
- Field Notes of GLO Contract No. 451, dated June 12, 1882, executed by Rufus S. Moore
- Field Notes of GLO Special Contract, dated May 4, 1887, executed by James P. Currin and James Noland
- Field Notes of GLO resurvey, retracement and survey, under special instructions dated Feb. 20, 1917, included in Group No. 29, executed by L.E. Wilkes
- DEED REFERENCES
Microfilm Document Number 2013-6120655
Microfilm Document Number 2013-6120650

NARRATIVE

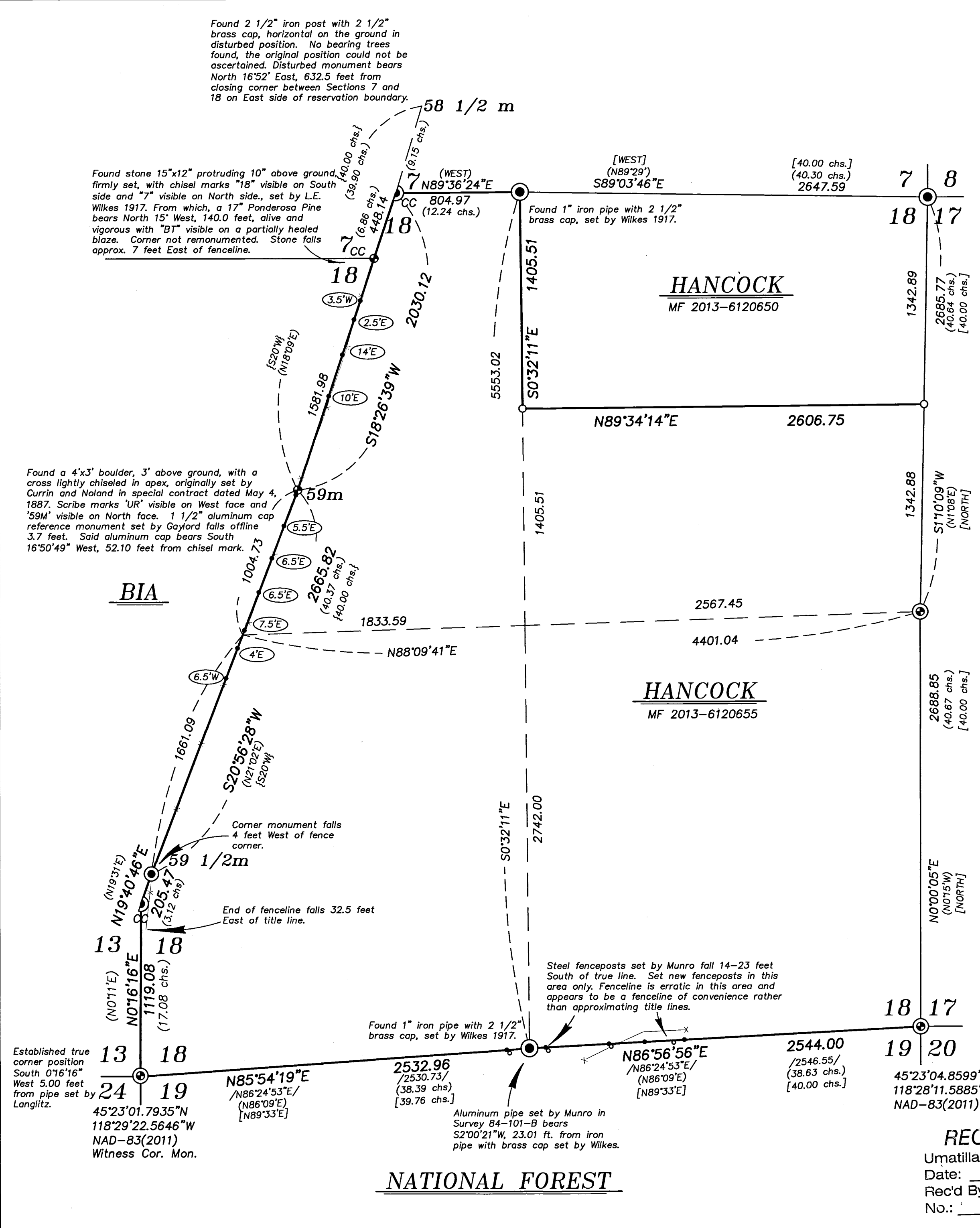
This survey was done at the request of Patrick Marolla on behalf of Hancock Forest Management, land manager of the land within. Mr. Marolla wanted corners monumented and select lines posted with steel fencepost prior to a timber sale.

I begin by recovering the monuments as shown hereon. The iron post monument for Mile 58 1/2" has been removed from the ground and the original position cannot be ascertained. For the reservation boundary, I hold on the position of the monument at the closing corner between 7 and 18 on the East side of the reservation boundary, as the subdivisional lines bordering the reservation as well as the retracement of the reservation boundary were done simultaneously (L.E. Wilkes 1917). Since an accurate retracement of the senior line was made, I hold the closing corner monument in its found position (BLM Manual 7-30). The closing corner on the West side of the reservation boundary, a stone monument, was set by the same survey and does indeed fall on line.

Along the South line, the South quarter corner was originally set by Rufus Moore in 1882. This line was later retraced by L.E. Wilkes in 1917 where he does not find the Moore quarter corner and place an iron pipe at proportioned position. In Survey 84-101-B, Fayette Munro does not find the Wilkes monument and sets an aluminum pipe at a proportioned position. I find the 1917 iron pipe with brass cap set by Wilkes in an undisturbed condition approx. 23 feet North of the aluminum pipe set by Munro. Due to the seniority of the monument, I hold the 1917 Wilkes monument. Steel fenceposts bearing "National Forest Property Boundary" signs fall along the line to the aluminum pipe monument. In the areas where the client is planning on harvesting timber, I post the correct line.

Mile 59 of the reservation boundary is a large chiseled boulder found in place. This was witnessed by Dennis Gaylord in 1995, however, it does not appear that a full retracement of the line was done in setting the aluminum cap monument. I therefore hold the chisel mark in the boulder and consider the aluminum cap a reference monument rather than a witness corner on line.

In the original GLO survey, the section terminates at the reservation boundary. Due to the lack of a West quarter corner, I place the East/West center of section line by weighted mean bearing of the North and South lines of Section 18, as per BLM Manual of Instruction section 3-121. I further subdivide the section as per the Manual. Fencelines are off as shown. I find no other unusual conditions with this survey.



REGISTERED PROFESSIONAL LAND SURVEYOR
JEFFREY S. HSU
RENEWAL DATE: JUNE 30, 2019

RECEIVED BY
Umatilla County Surveyor
Date: 11/16/17
Rec'd By: CT
No.: 17-177-8

BAGETT, GRIFFITH & BLACKMAN
2006 Adams Avenue, LaGrande, Oregon
Map of Survey

Situate in Section 18, Township 2 South, Range 35 East of the Willamette Meridian

UMATILLA COUNTY, OREGON

SURVEYED FOR	Hancock Forest Management
SURVEYED BY	J. S. H.
Scale: 1" = 500'	Drawn by: J. S. H. Oct. 2017