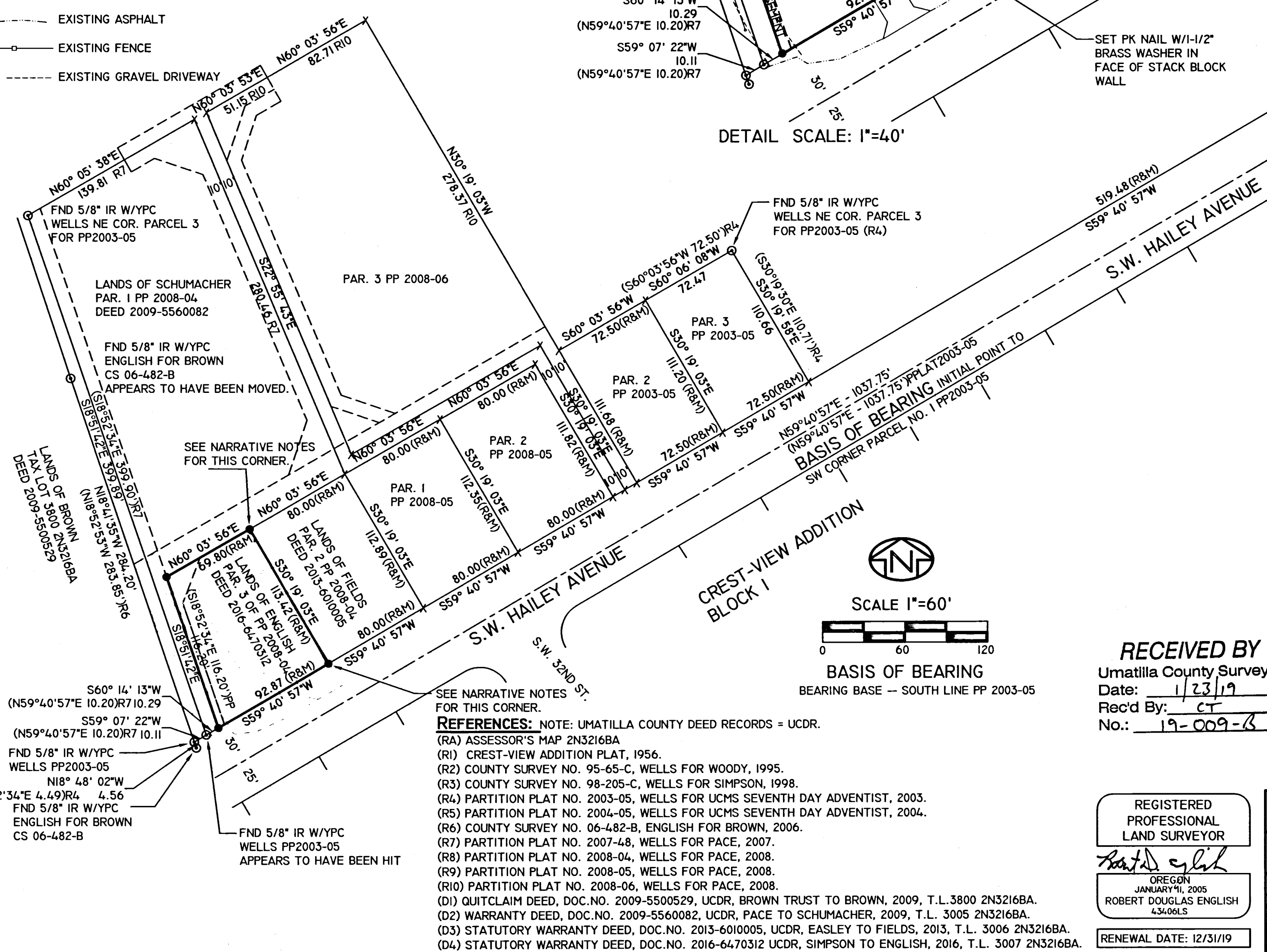
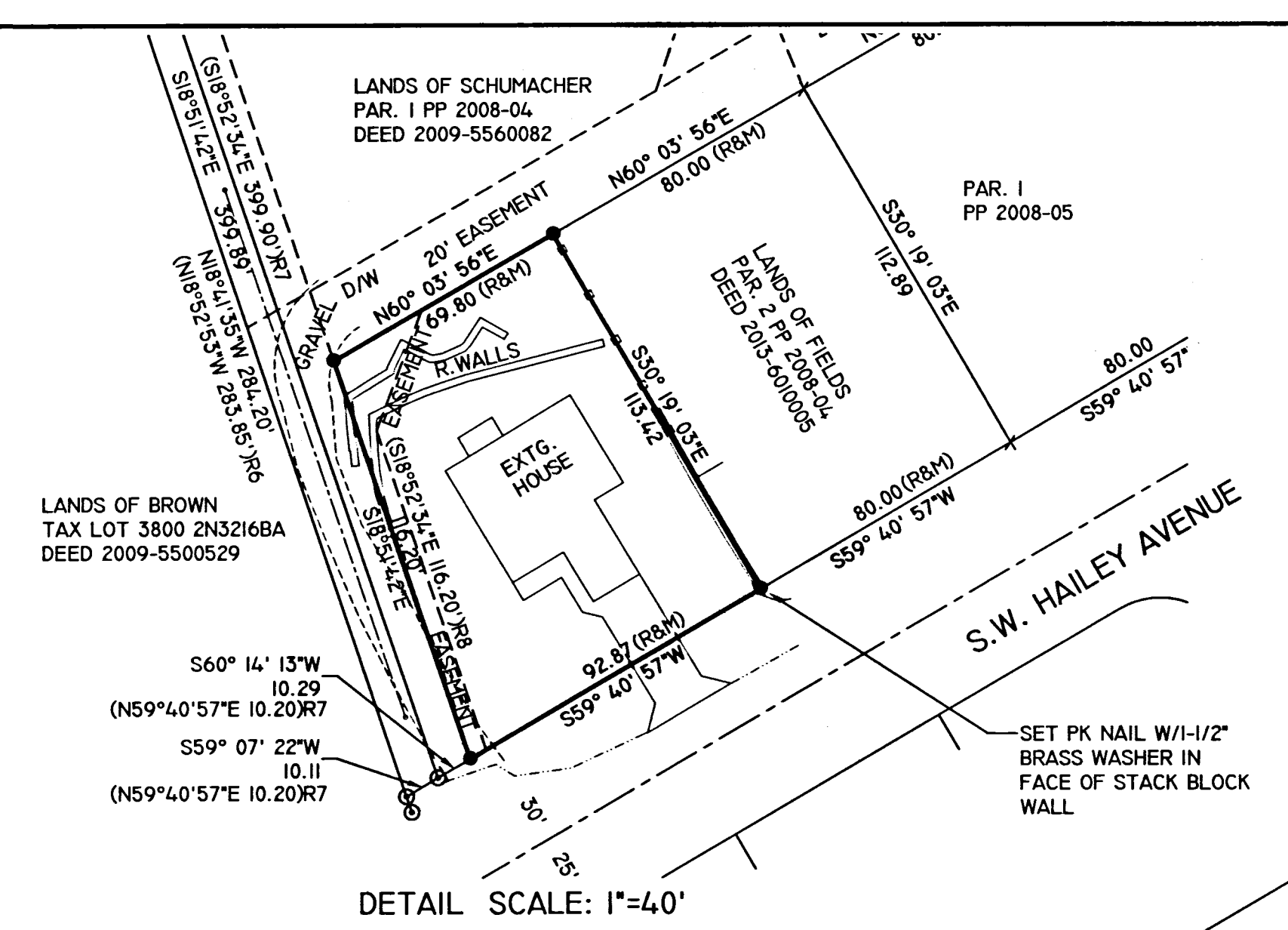


UMATILLA COUNTY  
**RECORD OF SURVEY**

A BOUNDARY SURVEY OF THE PARCEL 3 OF PARTITION PLAT 2008-04  
A.K.A. CURRENT TAX LOT 3007 OF ASSESSOR'S MAP 2N3216BA,  
LOCATED IN THE NE1/4,NW1/4 SECTION 16, T2N, R32E, W.M.,  
CITY OF PENDLETON, UMATILLA COUNTY, OREGON.

- LEGEND**
- SET 5/8"X 30" IRON REBAR W/ RED PLASTIC CAP STAMPED ORPLS43406LS/WAPLS44338
  - ⊙ FOUND MONUMENT, AS NOTED.
  - X CALCULATED POSITION, CORNER NOT FOUND.
  - (RI) OR (DI) REFERENCE DOCUMENT -- SEE REFERENCES.
  - RECORD CENTERLINE OF S.W. HAILEY AVENUE
  - PROPERTY BOUNDARY
  - - - RECORD EASEMENT
  - EXISTING RESIDENCE
  - ▭ EXISTING DRIVEWAY/CONCRETE
  - ▭ EXISTING RETAINING WALLS -- EARTH BLOCK OR STACK BLOCK
  - EXISTING OVERHEAD POWER AND POLES
  - EXISTING ASPHALT
  - EXISTING FENCE
  - EXISTING GRAVEL DRIVEWAY



**SURVEYOR'S NARRATIVE:**  
THIS SURVEY WAS PERFORMED AT THE REQUEST OF ROBIN ENGLISH, OWNER, TO RESET THE CORNERS OF PARCEL 3 OF PARTITION PLAT 2008-04, A.K.A. CURRENT TAX LOT 3007 OF ASSESSOR'S MAP 2N3216BA, LOCATED IN THE NORTHEAST QUARTER OF THE NORTHWEST QUARTER OF SECTION 16, TOWNSHIP 2 NORTH, RANGE 32 EAST, W.M., CITY OF PENDLETON, UMATILLA COUNTY, OREGON.

I FIND CORNERS REFERENCED IN PARTITION PLATS 2003-05, 2004-25, 2007-48, AND 2008-04, AS SHOWN. MANY OF THE PARTITION CORNERS HAVE BEEN TORN OUT DURING CONSTRUCTION, OR HIT, AS NOTED.

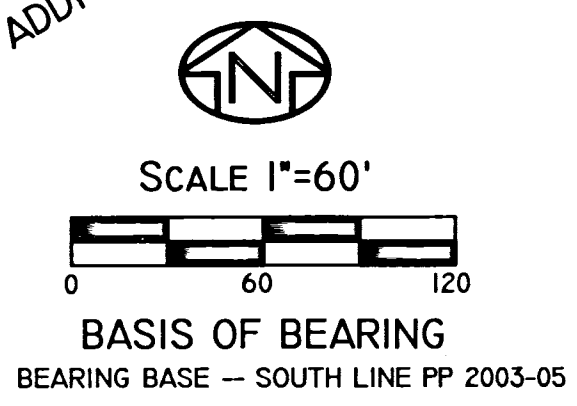
THE OVERALL DISTANCE ALONG THE SOUTH BASELINE CHECKED WITH THE RECORD, BUT THE MARKER AT THE SW CORNER OF PARCEL TWO IS OUT OF POSITION, AS NOTED. AS NOTED ABOVE, I SUSPECT IT HAS BEEN HIT DURING CONSTRUCTION.

THE NORTHEAST CORNER OF PARCEL 3 FALLS OVER A BURIED PACIFIC POWER SERVICE LINE TO ROBIN'S HOUSE, SO I SET A 5/8"X15" IRON REBAR AT THIS LOCATION. POWER LINES ARE REQUIRED TO BE AT LEAST 3' DEEP SO THIS SHOULD BE ADEQUATE CLEARANCE FOR THAT MARKER. THE SOUTHEAST CORNER FALLS IN THE FACE OF A STACK BLOCK RETAINING WALL. I SET A 1-1/2" PK NAIL WITH 1-1/2" BRASS WASHER AT THIS LOCATION. THE OTHER TWO CORNERS WERE MARKED WITH THE STANDARD 5/8"X30" IRON REBAR WITH RED PLASTIC CAP, MARKED ORPLS43406LS/WAPLS44338.

I HOLD THE BEARING BASE FROM THE SOUTH LINE OF PARTITION PLAT 2003-05. I USED A COMBINED SCALE FACTOR OF 0.9985546 FOR GROUND TO GRID RTK GPS TRANSFORMATION, AND A ROTATION OF 0°57'59" CLOCKWISE FROM GRID TO RECORD BEARING BASE.

THIS SURVEY WAS PERFORMED USING A SOKKIA GSR 2700IS RTK GPS SYSTEM, AND A TOPCON PSI03 ROBOTIC TOTAL STATION. STANDARD ERROR FOR THE RTK SYSTEM IS 10.0MM + 1 PPM X BASELINE MEASURED, AND THE TOTAL STATION IS +/- (3+2PPM X DISTANCE) IN MILLIMETERS.

I FIND NOTHING OUT OF THE ORDINARY ON THIS SURVEY.



**RECEIVED BY**  
Umatilla County Surveyor  
Date: 1/23/19  
Rec'd By: CT  
No.: 19-009-B

*Robert D. English*  
ROBERT D. ENGLISH, ORPLS43406LS

- REFERENCES:** NOTE: UMATILLA COUNTY DEED RECORDS = UCDR.
- (RA) ASSESSOR'S MAP 2N3216BA
  - (RI) CREST-VIEW ADDITION PLAT, 1956.
  - (R2) COUNTY SURVEY NO. 95-65-C, WELLS FOR WOODY, 1995.
  - (R3) COUNTY SURVEY NO. 98-205-C, WELLS FOR SIMPSON, 1998.
  - (R4) PARTITION PLAT NO. 2003-05, WELLS FOR UCMS SEVENTH DAY ADVENTIST, 2003.
  - (R5) PARTITION PLAT NO. 2004-05, WELLS FOR UCMS SEVENTH DAY ADVENTIST, 2004.
  - (R6) COUNTY SURVEY NO. 06-482-B, ENGLISH FOR BROWN, 2006.
  - (R7) PARTITION PLAT NO. 2007-48, WELLS FOR PACE, 2007.
  - (R8) PARTITION PLAT NO. 2008-04, WELLS FOR PACE, 2008.
  - (R9) PARTITION PLAT NO. 2008-05, WELLS FOR PACE, 2008.
  - (R10) PARTITION PLAT NO. 2008-06, WELLS FOR PACE, 2008.
  - (DI) QUITCLAIM DEED, DOC.NO. 2009-5500529, UCDR, BROWN TRUST TO BROWN, 2009, T.L.3800 2N3216BA.
  - (D2) WARRANTY DEED, DOC.NO. 2009-5560082, UCDR, PACE TO SCHUMACHER, 2009, T.L. 3005 2N3216BA.
  - (D3) STATUTORY WARRANTY DEED, DOC.NO. 2013-6010005, UCDR, EASLEY TO FIELDS, 2013, T.L. 3006 2N3216BA.
  - (D4) STATUTORY WARRANTY DEED, DOC.NO. 2016-6470312 UCDR, SIMPSON TO ENGLISH, 2016, T.L. 3007 2N3216BA.

REGISTERED PROFESSIONAL LAND SURVEYOR  
*Robert D. English*  
OREGON JANUARY 11, 2005  
ROBERT DOUGLAS ENGLISH  
43406LS  
RENEWAL DATE: 12/31/19

DATE: 01/04/19	DWN. BY: RDE	RECORD OF SURVEY FOR: <b>ROBIN &amp; JOANNE ENGLISH</b> 3261 SW HAILEY AVENUE PENDLETON, OREGON 97801
SCALE: 1"=100'	CHK. BY: RDE	
JOB NO. 2018-030	REV.DATE: 00/00/00	<b>SURVEY ONE,LLC</b> P.O. BOX 382 PENDLETON OR, 97801 PH:541-276-2055 FAX:541-276-3480
DWG NO. ROBINENGLISHROS.DWG		