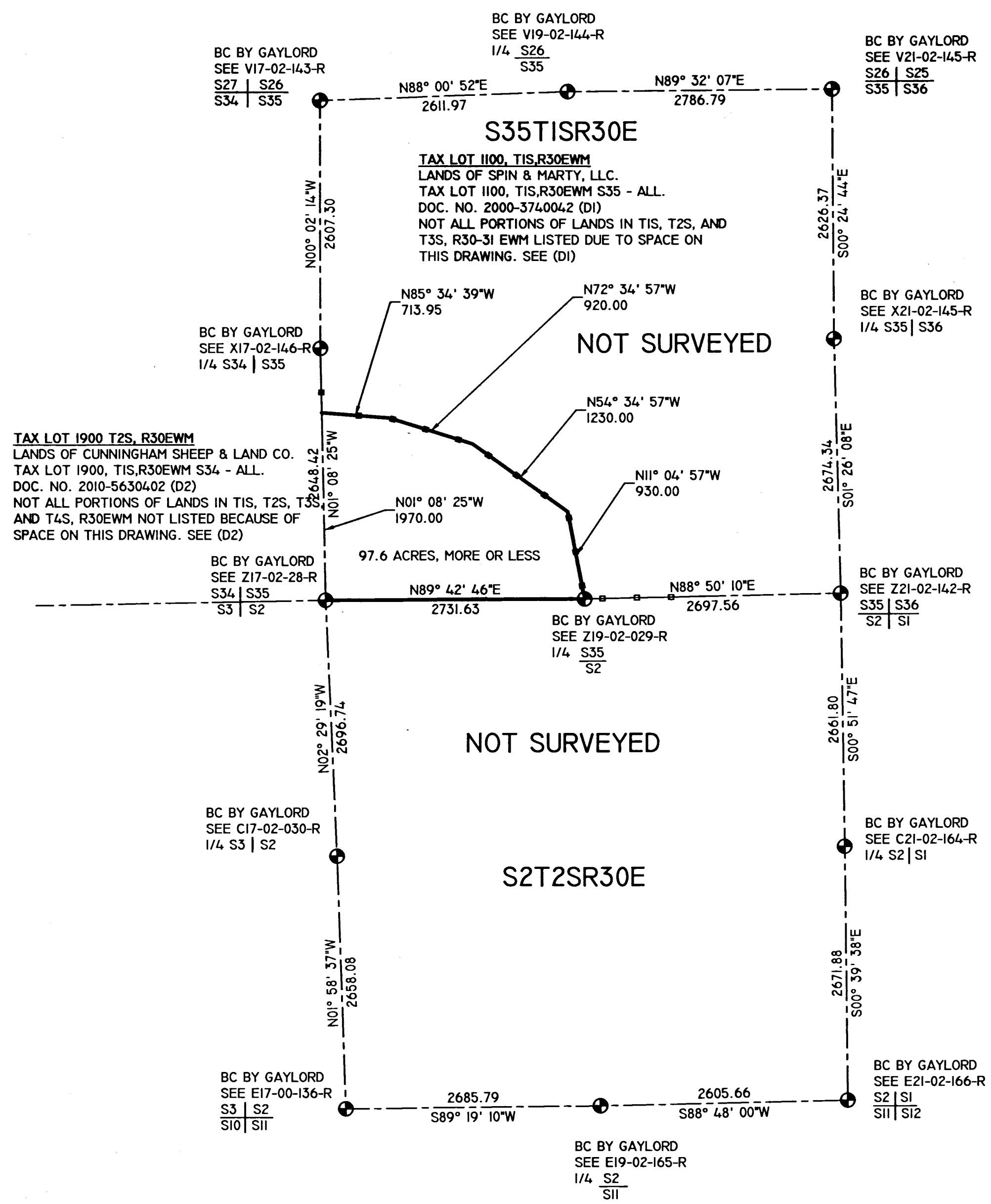


UMATILLA COUNTY  
**RECORD OF SURVEY FOR BLA**

A MEANDER LINE SURVEY OF THE FENCE LINE BETWEEN CURRENT TAX LOTS 1100 & 1900 OF ASSESSOR'S MAP IS30, LOCATED IN THE SW1/4 OF SECTION 35, T1S, R30E, W.M., UMATILLA COUNTY, OREGON.

- LEGEND**
- BRASS CAP MONUMENT, LCR RECORDS (GAYLORD).
  - X ANGLE POINT IN FENCE, NOTHING SET.
  - (R1) OR (D1) REFERENCE DOCUMENTS, ON RECORD WITH UMATILLA COUNTY.
  - PROPERTY BOUNDARY
  - - - SECTION LINES
  - ○ ○ EXISTING FENCELINES



- REFERENCES:** NOTE: UMATILLA COUNTY DEED RECORDS = UCDR.
- (R1) ASSESSOR'S MAP IS30, 2S30
  - (R2) LAND CORNER RECORD, IS30V17, V17-02-143-R, GAYLORD, 2002.
  - (R3) LAND CORNER RECORD, IS30V19, V19-02-144-R, GAYLORD, 2002.
  - (R4) LAND CORNER RECORD, IS30V21, V21-02-145-R, GAYLORD, 2002.
  - (R5) LAND CORNER RECORD, IS30X17, X17-02-146-R, GAYLORD, 2002.
  - (R6) LAND CORNER RECORD, IS30X21, X21-02-147-R, GAYLORD, 2002.
  - (R7) LAND CORNER RECORD, IS30Z17, Z17-02-28-B, GAYLORD, 2002.
  - (R8) LAND CORNER RECORD, IS30Z19, Z19-02-29-R, GAYLORD, 2002.
  - (R9) LAND CORNER RECORD, IS30Z21, Z21-02-142-R, GAYLORD, 2002.
  - (R10) LAND CORNER RECORD, 2S30C17, C17-02-30-R, GAYLORD, 2002.
  - (R11) LAND CORNER RECORD, 2S30C21, C21-02-164-R, GAYLORD, 2002.
  - (R12) LAND CORNER RECORD, 2S30E17, E17-00-136-R, GAYLORD, 2000.
  - (R13) LAND CORNER RECORD, 2S30E19, E19-02-165-R, GAYLORD, 2002.
  - (R14) LAND CORNER RECORD, 2S30E21, E21-02-166-R, GAYLORD, 2002.
  - (D1) STATUTORY WARRANTY DEED, DOC.NO.2000-3740042, UCDR, LAZINKA RANCH, INC. TO SPIN & MARTY, LLC., 2000. T.L.1100, IS30.
  - (D2) STATUTORY BARGAIN & SALE DEED, DOC.NO.2010-5630402, UCDR, CUNNINGHAM SHEEP COMPANY TO CUNNINGHAM SHEEP & LAND, COMPANY, 2010, T.L. 1900, IS30.

**SURVEYOR'S NARRATIVE:**

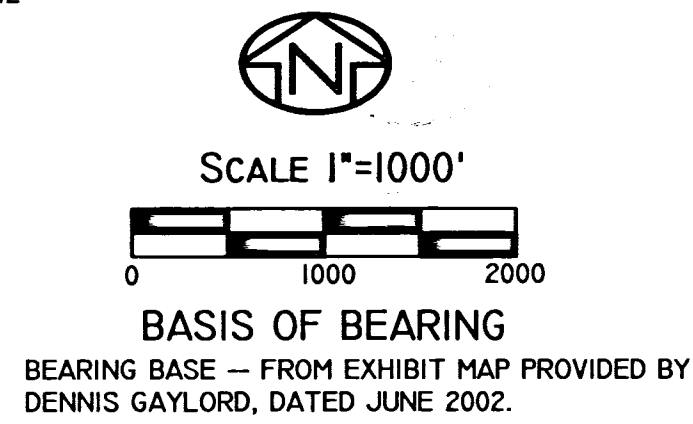
THIS RECORD OF SURVEY WAS PREPARED AT THE REQUEST OF BILL ALEXANDER, REPRESENTATIVE OF CUNNINGHAM SHEEP AND LAND COMPANY, TO PROPERLY MAP THE MEANDER LINE ALONG A FENCE LINE IN THE SOUTHWEST QUARTER OF SECTION 35, T1S, R30E FROM NOTES MADE BY DENNIS GAYLORD FROM A SURVEY DONE IN JUNE OF 2002. HIS SKETCH MAP DID NOT INCLUDE THE MEANDER DATA PROVIDED IN AN ATTACHED LEGAL DESCRIPTION THAT IS IN THE BOUNDARY LINE ADJUSTMENT APPLICATION. DENNIS HAD SET THE EXTERIOR CORNERS TO SECTION 35 AND RECORDED THE LAND CORNER RECORDS. HE PROVIDED A LEGAL DESCRIPTION NARRATIVE OF THE SURVEY LINES USING RESOURCE GRADE GPS EQUIPMENT WITH ACCURACY OF PLUS OR MINUS 6 FEET. HE CALLS OREGON STATE PLANE COORDINATE SYSTEM BEARINGS AND BY THE DATE I WOULD EXPECT THOSE TO BE NAD83. HE STATES THAT THESE BEARINGS MUST BE ROTATED 1 DEGREE (CLOCKWISE) TO CONVERT TO GEODETIC (TRUE) NORTH. I ENTER THE SKETCH MAP DATA PROVIDED, AND THEN ENTERED IN THE LEGAL DESCRIPTION BEARINGS AND DISTANCES. I HOLD THE DISTANCES OVER THE BEARINGS, AS ACCEPTED PRACTICE UNDER O.R.S., AND MADE ANGULAR ADJUSTMENTS TO GET CLOSURE WITH THE DISTANCES GIVEN, RESULTING IN THE BEARINGS SHOWN ON THIS EXHIBIT MAP. THOSE ADJUSTMENTS ALSO AGREED WITH THE GIVEN AREA OF 97.6 ACRES CALLED ON HIS DESCRIPTION AND SKETCH.

I MET WITH DAVE KRUMBEIN, UMATILLA COUNTY SURVEYOR AND HE AGREED WITH THE SIZE OF THE PROPERTY BEING EXCHANGED THAT THIS MAP WOULD MEET THE REQUIREMENTS OF THE COUNTY WITHOUT A MORE DETAILED SURVEY.

I FIND NOTHING OUT OF THE ORDINARY ON THIS SURVEY.

**RECEIVED BY**  
Umatilla County Surveyor  
Date: 2/14/19  
Rec'd By: CT  
No.: 19-020-B

*Robert D. English*  
ROBERT D. ENGLISH, ORPLS43406LS



REGISTERED PROFESSIONAL LAND SURVEYOR  
*Robert D. English*  
OREGON  
JANUARY 11, 2005  
ROBERT DOUGLAS ENGLISH  
43406LS  
RENEWAL DATE: 12/31/19

DATE: 01/09/19	DWN. BY: RDE	EXHIBIT MAP FOR BLA: <b>CUNNINGHAM SHEEP COMPANY</b>
SCALE: 1"=1000'	CHK. BY: RDE	303 SW 3RD STREET PENDLETON, OREGON 97801
JOB NO. 2019-003	REV. DATE: 02/11/19	<b>SURVEY ONE,LLC</b>
DWG NO. CSHS30ETL1100-1900.DWG		P.O. BOX 382 PENDLETON OR, 97801 PH:541-276-2055 FAX:541-276-3480