

RECORD OF SURVEY

NE 1/4 NE 1/4, SECTION 34

T. 6 N., R. 35 E., W.M.

APPROX. 1 MILE NW OF MILTON-FREEWATER,

UMATILLA COUNTY, OREGON

NW CORNER

SEC. 34 (N89°43'36"E, M=R) 4755.60

2 INCH BRASS CAP PER CS 03-23-C; 2001, LS 2360 (TOMPKINS)

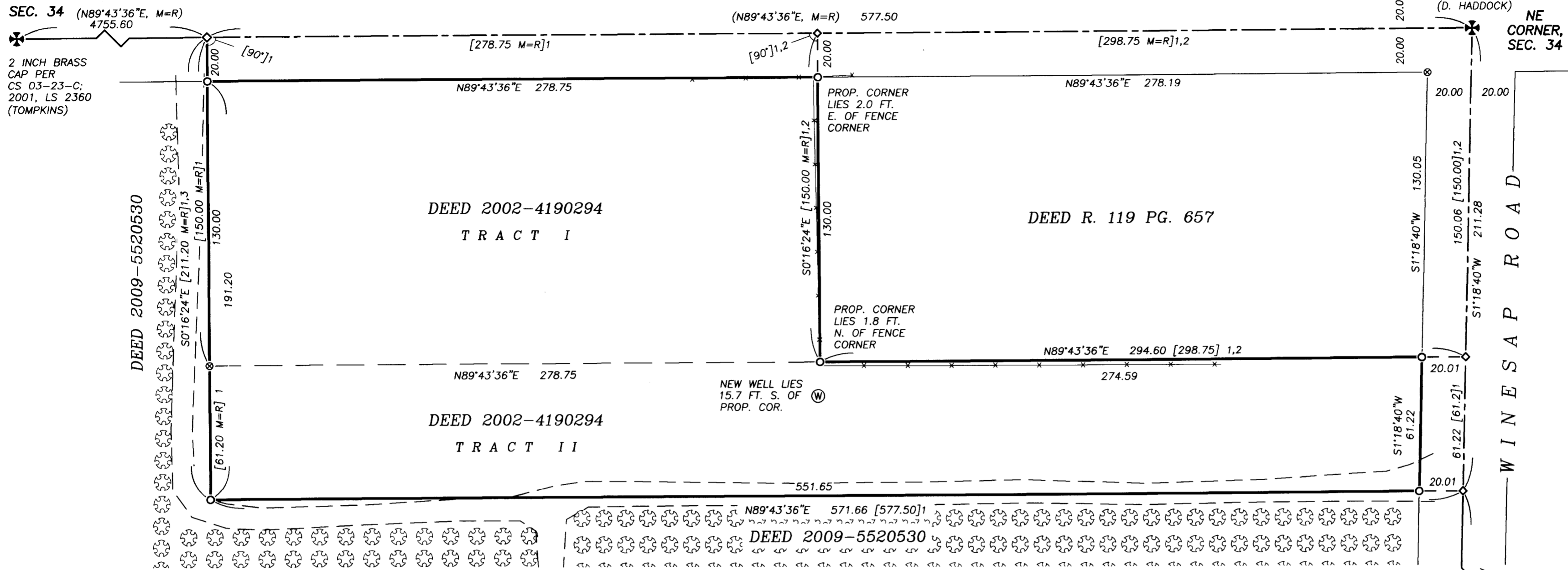
UMAPINE - SUNNYSIDE ROAD

(N89°43'36"E, M=R) 577.50

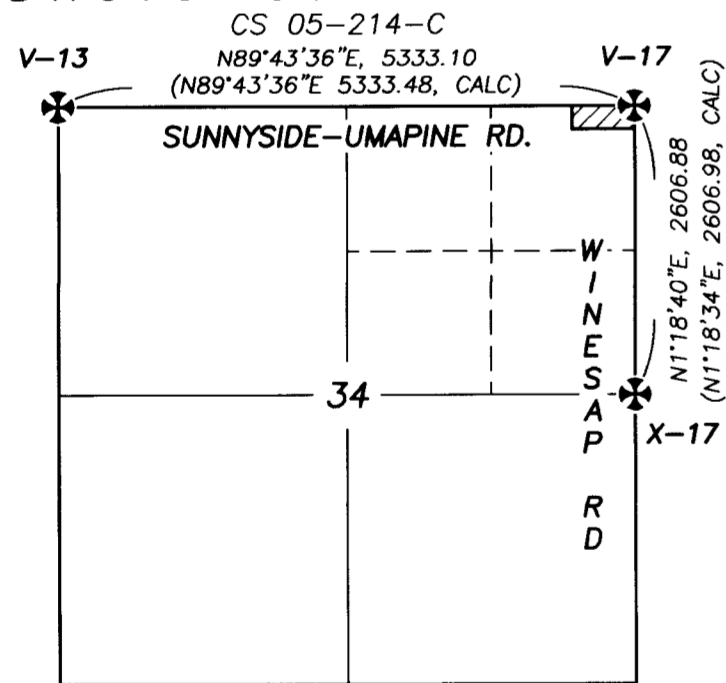
2 1/2 INCH BRASS CAP PER CS 02-02-B; 2001, LS 852 (D. HADDOCK)

NE CORNER, SEC. 34

2 INCH BRASS CAP PER CS 03-23-C; 2001, LS 2360 (TOMPKINS)



BASIS OF BEARING



N. T. S. VICINITY MAP

NARRATIVE

THIS SURVEY WAS PERFORMED AT THE REQUEST OF ROGER AND COLLEEN GILDERSLEEVE, AGENTS OF DIAMOND G TIMBER LIMITED, LLC; FOR THE PURPOSE OF SURVEYING AND MONUMENTING THE PROPERTY CORNERS OF UMATILLA COUNTY DEED 2002-4190294. SAID DEED IS DESCRIBED AS TWO (2) TRACTS.

THE DISTANCES CITED IN THE DESCRIPTION OF SAID DEED CONCUR WITH THE DISTANCES CITED PER ADJACENT DEEDS R119 P657 AND 2009-5520530. OF THE THREE (3) DEEDS, 2002-4190294 HAS THE MOST EXPLICIT DIRECTION FOR THE LINES. COMMENCING AT THE NORTHEAST CORNER OF SECTION 34; THENCE WEST ALONG THE NORTH LINE OF SECTION 34 PER THE CITED DISTANCES. THE LINES THEN CONTINUE PERPENDICULAR TO THE NORTH SECTION LINE PER DEED DISTANCES. THE WEST PROPERTY LINES OF DEEDS 2002-4190294 AND R119 P657 WERE SET PERPENDICULAR TO THE SECTION LINE PER DEED 2002-4190294.

THE SOUTH LINES OF DEEDS 2002-4190294 AND R119 P657 WERE SET PARALLEL TO THE SECTION LINE AT DEED DISTANCES. THE EAST ENDS OF THE TWO (2) SAID SOUTH LINES WERE TERMINATED AND SET AT THE EAST LINE OF THE NORTHEAST QUARTER OF SECTION 34.

THIS WORK WAS PERFORMED USING TRIMBLE R-B G.P.S. RECEIVERS AND NIKON 522 THEODOLITE WITH E.D.M. (ELECTRONIC DISTANCE MEASURING) CAPABILITY.

REFERENCES

SURVEYS	DEEDS
CS 05-214-C, BASIS OF BEARING	2002-4190294
CS 02-02-B	R119 PG. 657
CS 03-023-C	2009-5520530
CS 15-039-C	
CORNER REPORTS	
V17-02-018-B	
X17-02-018-B	

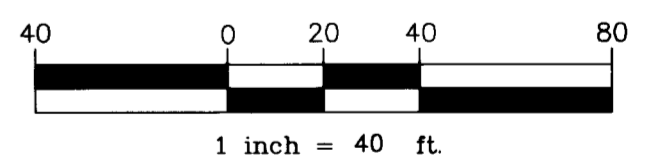
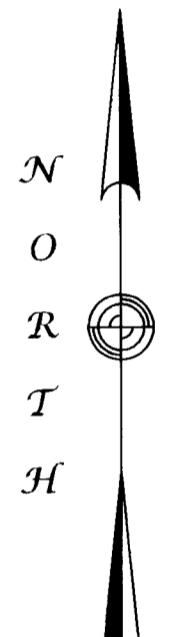
- LEGEND**
- ✱ PUBLIC LAND SURVEY CORNER, AS NOTED
 - SET, A 5/8 X 30 INCH IRON REBAR WITH LT. BLUE PLASTIC CAP MKD: "WALLOWA ASSOC."
 - ◇ SET, A 2 1/2 INCH MAG NAIL AT ASPHALT SURFACE
 - ⊙ CALCULATED POSITION, MONUMENT NEITHER FOUND NOR SET
 - ⊙ WELL HEAD
 - ⊙ ORCHARD TREES
 - PROPERTY LINES
 - - - UNIMPROVED DIRT ROAD
 - x-x- BARBED WIRE FENCE

- (XXX.XX) DIMENSION PER CS 05-214-C
- (XXX.XX, CALC) CALCULATED DISTANCE PER CS 05-214-C
- (XX-XX-XX, M=R) BEARING PER CS 05-214-C, MEASURED EQUALS RECORD
- [XXX.XX]1 RECORD DISTANCE OR DIRECTION PER DEED 2002-4190294
- [XXX.XX]2 RECORD DISTANCE OR DIRECTION PER DEED R119 PG 657
- [XXX.XX]3 RECORD DISTANCE PER DEED 2009-5520530

2 3/8 INCH BRASS CAP PER CS 02-02-B; 2001, LS 852 (D. HADDOCK)

E. 1/4 SEC. 34

3 1/2 INCHES BELOW ASPHALT



RECEIVED BY
 Umatilla County Surveyor
 Date: MAR 24 2021
 Rec'd By: JMA
 No.: 21-030-B

REGISTERED PROFESSIONAL LAND SURVEYOR
Rodney J. Lewis
 OREGON
 JULY 14, 1998
RODNEY J. LEWIS
 2872
 EXPIRES 12-31-22

<p>RECORD OF SURVEY FOR DIAMOND G TIMBER LIMITED, LLC</p>		
<p>LOCATED WITHIN NE1/4 OF NE1/4, SECTION 34, TOWNSHIP 6 NORTH, RANGE 35 EAST, W.M. UMATILLA COUNTY, OREGON</p>		
<p>Wallowa Associates 303 S.E. Alamo Street Enterprise, Oregon 97828 (541) 426-9049</p>		
SCALE 1 INCH = 40 FT.	SHEET No. 1 OF 1	DATE OF SURVEY Beginning: 1 MAR 21 Ending: 3 MAR 21
DRAWN BY R J L	CHECKED K L P	PROJECT No. B214-01 / 3120cg