

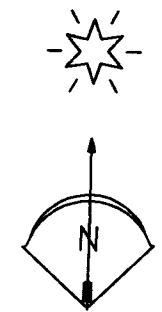
**LEGEND**

- FOUND BRASS CAP IN A MONUMENT BOX FROM SURVEY Q-925-C
- SET A 5/8" x 24" IRON REBAR W/ A 1 1/8" ORANGE PLASTIC CAP STAMPED WTS AND 56295LS
- SET A PK NAIL WITH 2" BRASS WASHER STAMPED WTS AND 56295LS
- COMPUTED POINT
- R1 PLAT BOOK 1, PAGE 95 PILOT ROCK INCLUDING NORTH AND SOUTH ADDITIONS
- R2 PLAT BOOK 8, PAGE 9 MOLTKE'S ADDITION
- R3 COUNTY SURVEY Q-853-A
- R4 COUNTY SURVEY Q-856-AX
- R5 COUNTY SURVEY Q-857-AX
- R6 COUNTY SURVEY Q-925-C
- R7 COUNTY SURVEY R-42-B
- R8 COUNTY SURVEY S-142-B
- R9 ODOT R/W MAP No. 5B-20-10

**BOUNDARY ADJUSTMENT SURVEY IN BLOCK 1 NORTH ADDITION TO PILOT ROCK**

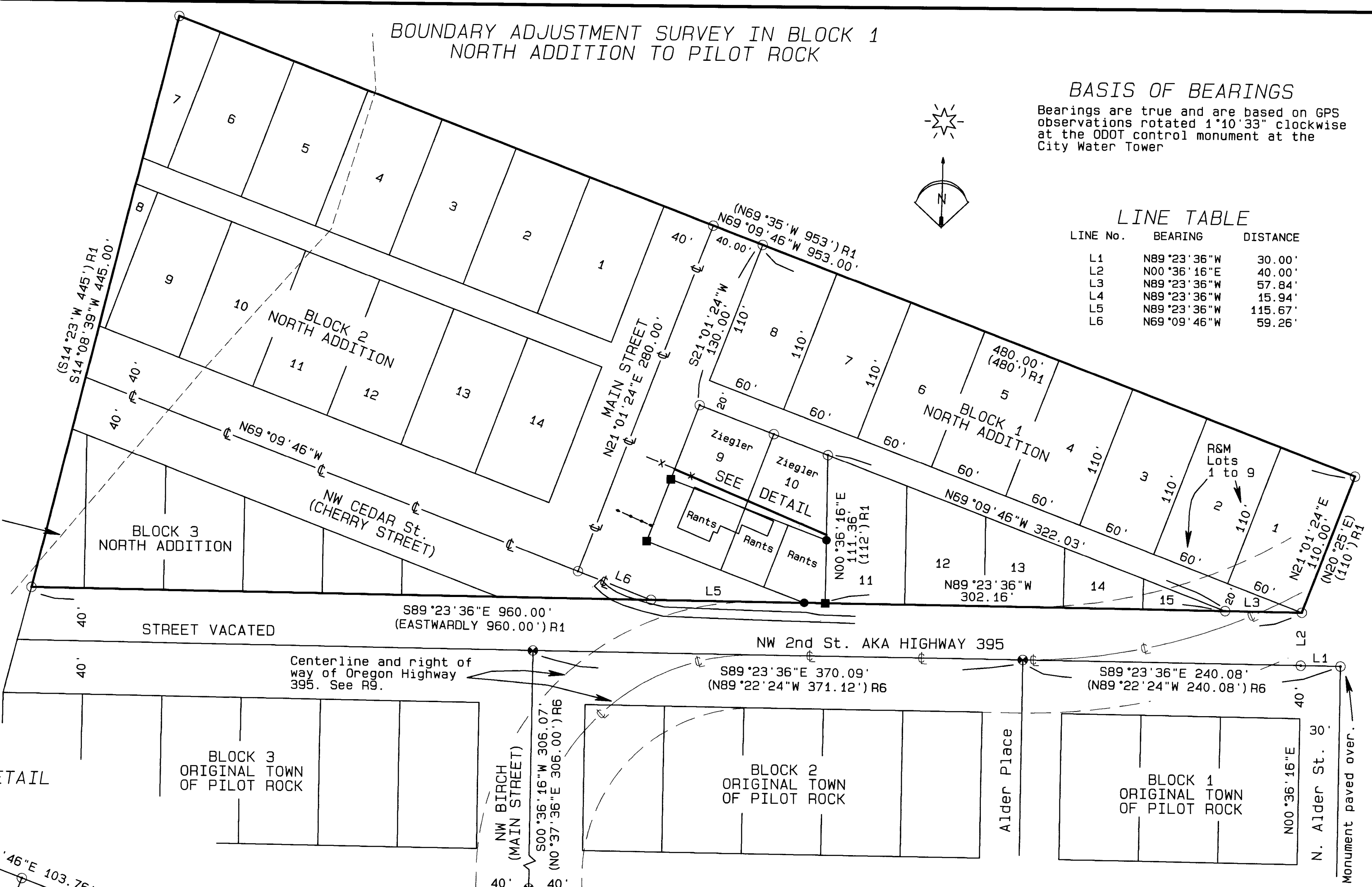
**BASIS OF BEARINGS**

Bearings are true and are based on GPS observations rotated 1°40'33" clockwise at the ODOT control monument at the City Water Tower



**LINE TABLE**

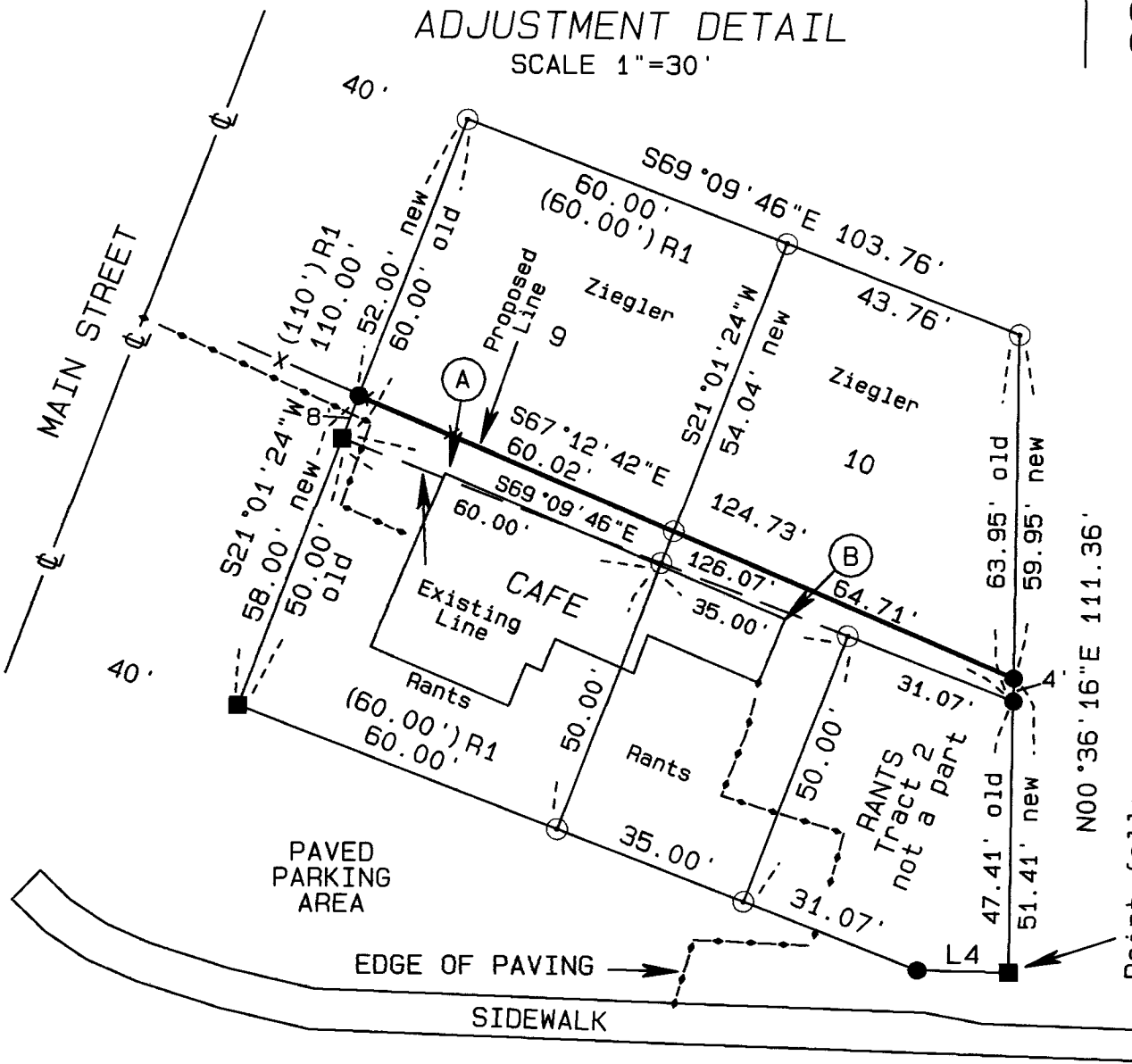
LINE No.	BEARING	DISTANCE
L1	N89°23'36"W	30.00'
L2	N00°36'16"E	40.00'
L3	N89°23'36"W	57.84'
L4	N89°23'36"W	15.94'
L5	N89°23'36"W	115.67'
L6	N69°09'46"W	59.26'



**DETAIL NOTES**

- (A) THE BUILDING CORNER IS 0.9' NORTH OF THE PROPERTY LINE.
- (B) THE BUILDING CORNER IS 1.3' SOUTH OF THE PROPERTY LINE.

**ADJUSTMENT DETAIL**  
SCALE 1"=30'



NOTE:  
Area to adjust from Ziegler to Rants 735 sq. ft.

Point falls on highway bridge abutment.

REGISTERED PROFESSIONAL LAND SURVEYOR  
*Stephen K. Haddock*  
OREGON  
JULY 9, 2001  
STEPHEN K. HADDOCK  
56295LS  
RENEWS 6-30-21

RECEIVED BY  
Umatilla County Surveyor  
Date: 6/1/21  
Rec'd By: CT  
No.: 21-058-6

**NARRATIVE OF SURVEY**

This survey was performed at the request of Mrs. Nadine Rants. The purpose of the survey was to locate and monument the adjusted line of an approved boundary adjustment. The pre-adjustment property lines are described in Reel 405, Page 6 for Ziegler and Reel 594, Page 81 for Rants. There are no prior record surveys purporting to have monumented any corner in the North Addition. To establish the boundaries shown I held the found monuments from survey Q-925-C for control. The North Addition plat has insufficient data to determine the direction of the north-south lines of Lots 11-15 in Block 1 and I located them as being the northerly extension of the lines in Blocks 1 and 2 of the Original Town of Pilot Rock. I calculated the SE corner of North Addition as described on the Plat. I then held the record angle at that point and the record distance for the east line of Lot 1, Block 1 as shown. I calculated the south line of North Addition 40 feet north of and Parallel with the monuments along NW 2nd Street using the record plat distance. I then calculated the NW corner of North Addition using a distance - distance intersect and the record plat distances. With the Addition exterior thus established, I calculated the lot and street locations using record dimensions working from Lot 1, Block 1 toward the west. I placed all excess or deficiency in the fractional lots on the west end of Blocks 2 and 3 of North Addition.

Map revised and Monuments Set 5-17-2021

<b>SURVEY FOR</b> MRS. NADINE RANTS P.O. BOX 688 PILOT ROCK, OR 97868	PROJECT DATE: October 4, 2012	
	Project No. 12-21	SCALE: 1" = 60'
LOCATION: NE 1/4, S17, T1S, R32E, W.M., UMATILLA COUNTY, OREGON	<b>WITNESS TREE SURVEYING</b> Stephen K. Haddock, PLS, CFedS P.O. Box G Pilot Rock, Oregon 97868 (541) 443-2922	