

NARRATIVE

THIS SURVEY WAS PERFORMED FOR THE UMATILLA NATIONAL FOREST, WITH THE PURPOSE OF DELINEATING CERTAIN BOUNDARIES BETWEEN PRIVATE LAND AND NATIONAL FOREST SYSTEM LAND.

A HISTORY OF SURVEYS PERTAINING TO THIS SURVEY IS AS FOLLOWS:

1. THE SUBDIVISION OF TOWNSHIP 3 SOUTH, RANGE 32 EAST WAS PERFORMED BY GEORGE S. PERSHIN, U.S. DEPUTY SURVEYOR FOR THE GENERAL LAND OFFICE, UNDER CONTRACT NO. 430 DATED MARCH 23, 1882.
2. REMONUMENTATION OF CERTAIN ORIGINAL CORNER POINTS, TOWNSHIP 3 SOUTH, RANGE 32 EAST, BY CRAIG L. WANLESS, CADASTRAL SURVEYOR FOR THE BUREAU OF LAND MANAGEMENT, UNDER SPECIAL INSTRUCTIONS DATED MAY 3, 1957, INCLUDED UNDER GROUP NO. 350. SURVEY COMPLETED AUGUST 11, 1977.
3. SURVEY FOR THE UMATILLA NATIONAL FOREST TITLED "RILEY '82 CADASTRAL SURVEY" BY WILLIAM R. WELLS, PLS #1106, UNDER U.S. FOREST SERVICE CONTRACT NO. 53-04R3-2-01264, MAP OF SURVEY AND ASSOCIATED CORNER MONUMENTATION FORMS FILED DECEMBER 15, 1982, IN THE UMATILLA COUNTY SURVEYOR'S RECORDS AS SURVEY NO. 82-137-B.
4. CORNER MAINTENANCE AND PERPETUATION OF THE NORTHWEST CORNER SECTION 12 (E-21) BY FAYETTE S. MUNRO, PLS #1832, CORNER MONUMENTATION FORM FILED OCTOBER 10, 1984, IN THE UMATILLA COUNTY SURVEYOR'S RECORDS AS SURVEY NO. 84-122-R.
5. SURVEY FOR THE UMATILLA NATIONAL FOREST TITLED "INDIAN 1987 CADASTRAL SURVEY" BY DAVID L. HADDOCK, PLS #852, UNDER U.S. FOREST SERVICE CONTRACT NO. 53-04R3-7-38, MAP OF SURVEY AND ASSOCIATED CORNER MONUMENTATION FORMS FILED NOVEMBER 23, 1987, IN THE UMATILLA COUNTY SURVEYOR'S RECORDS AS SURVEY NO. 87-68-B.
6. REMONUMENTATION OF THE NORTHEAST CORNER SECTION 14 (J-21), BY DENNIS L. GAYLORD, PLS #1636, CORNER MONUMENTATION FORM FILED JUNE 29, 1987, IN THE UMATILLA COUNTY SURVEYOR'S RECORDS AS SURVEY NO. 87-27-R.
7. SURVEY FOR DAN AND RAE SOLOMON BY STEPHEN K. HADDOCK, PLS #56295, MAP OF SURVEY AND ASSOCIATED CORNER MONUMENTATION FORMS FILED NOVEMBER 21, 2022, IN THE UMATILLA COUNTY SURVEYOR'S RECORDS AS SURVEY NO. 22-131-B.

FIELD MEASUREMENTS WERE MADE TO RECOVER APPURTENANT CONTROLLING MONUMENTS FROM THE AFOREMENTIONED SURVEYS. ORIGINAL CORNER EVIDENCE WAS SEARCHED FOR AND EVALUATED AS FOLLOWS:

(L-21) EAST 1/4 CORNER SECTION 14: I FOUND BOTH ORIGINAL BEARING TREES. THE SOUTHWEST BT WAS A 34" DIAMETER PONDEROSA PINE SNAG. I FELL IT AND CUT IT OPEN, REMOVING APPROXIMATELY 8" OF OVERGROWTH TO REVEAL THE HEALED BLAZE WITH SCRIBING "1/4S" VISIBLE. THE NORTHEAST BT WAS A 28" DBH PONDEROSA PINE, ALIVE AND HEALTHY, WITH A FULLY HEALED BLAZE. I ALSO FOUND THE ORIGINAL CORNER STONE, DISPLACED AND LYING DOWNHILL ABOUT 12 FT. FROM THE CORNER POINT. THE STONE MEASURED 13"x8"x7" (RECORD: 14"x8"x7") AND WAS MARKED "1/4". I ACCEPT THE BEARING TREES AS SUFFICIENT ACCESSORY CORNER EVIDENCE AND REESTABLISHED THE CORNER BY DISTANCE-DISTANCE INTERSECTION USING THE GLO RECORD DISTANCES.

(N-11) NORTH 1/4 CORNER SECTION 21: FOUND STONE 12"x8"x7" (RECORD: 12"x8"x7") CLEARLY MARKED "1/4", LYING WITH THE MARKED FACE DOWN WITH NO OTHER STONES. FROM WHICH, I ALSO FOUND THE REMAINS OF THE ORIGINAL SOUTHEAST BEARING TREE, WHICH WAS A DEAD AND DOWN (WINDTHROWN) PONDEROSA PINE, WITH BLAZE AND PARTIAL SCRIBING "4S" VISIBLE. I ACCEPT THE POSITION OF THE FOUND STONE FOR THE CORNER.

(N-13) NORTHEAST CORNER SECTION 21: FOUND STONE 20"x10"x5" (RECORD: 20"x10"x5") SET UPRIGHT IN THE CENTER OF A 3 FT. DIAMETER MOUND OF STONE, PROPERLY MARKED AND ORIENTED WITH 3 NOTCHES ON SOUTH EDGE AND 3 NOTCHES ON EAST EDGE, LOCATED ON A LARGE TALUS SLOPE. WE SEARCHED FOR BUT FOUND NO REMAINS OF THE BEARING TREES. I ACCEPT THE POSITION OF THE FOUND STONE FOR THE CORNER.

(N-15) NORTH 1/4 CORNER SECTION 22: AFTER A DILIGENT SEARCH, I FOUND NO REMAINING EVIDENCE OF THE ORIGINAL CORNER. THE AREA HAS BEEN SUBJECTED TO SIGNIFICANT DISTURBANCE FROM PAST LOGGING ACTIVITIES. I FOUND THE REMAINS OF TWO PONDEROSA PINE STUMPS NEAR THE RECORD LOCATIONS OF THE BEARING TREES, BUT THERE WERE NO BLAZES OR SCRIBING PRESENT TO SUBSTANTIATE EITHER ONE AS A BEARING TREE. I DECLARE THIS CORNER LOST, AND REESTABLISH IT BY SINGLE PROPORTIONATE MEASUREMENT.

ALL OF THE OTHER CONTROLLING MONUMENTS OF RECORD WERE RECOVERED AND ACCEPTED, AS SHOWN HEREON. SECTION 14 WAS SUBDIVIDED WITH REFERENCE TO THE 2009 BLM MANUAL OF SURVEYING INSTRUCTIONS. NEW MONUMENTS WERE SET ACCORDING TO THE EVIDENCE FOUND. SEE THE CORNER MONUMENTATION RECORDS FILED SEPARATELY FOR MORE DETAILS REGARDING THE EVIDENCE FOUND AND EVALUATED, NEW MONUMENTS SET, AND CORNER ACCESSORIES ESTABLISHED.

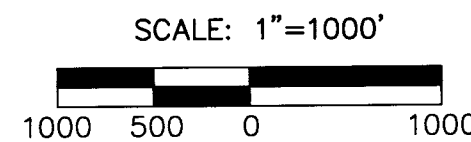
THE NATIONAL FOREST BOUNDARY WAS POSTED OR MAINTAINED DURING THE COURSE OF THIS SURVEY AS SHOWN HEREON.

LEGEND

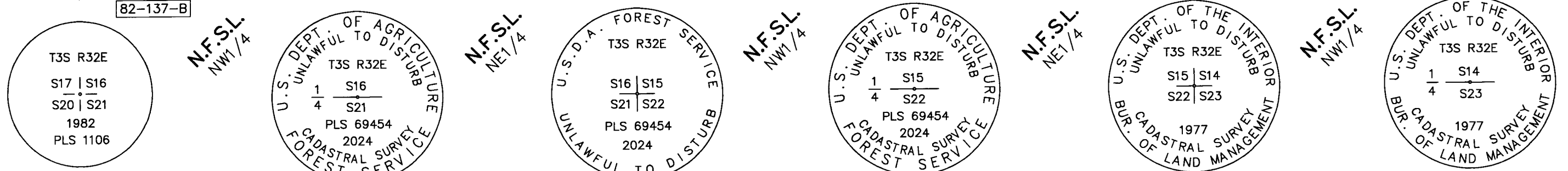
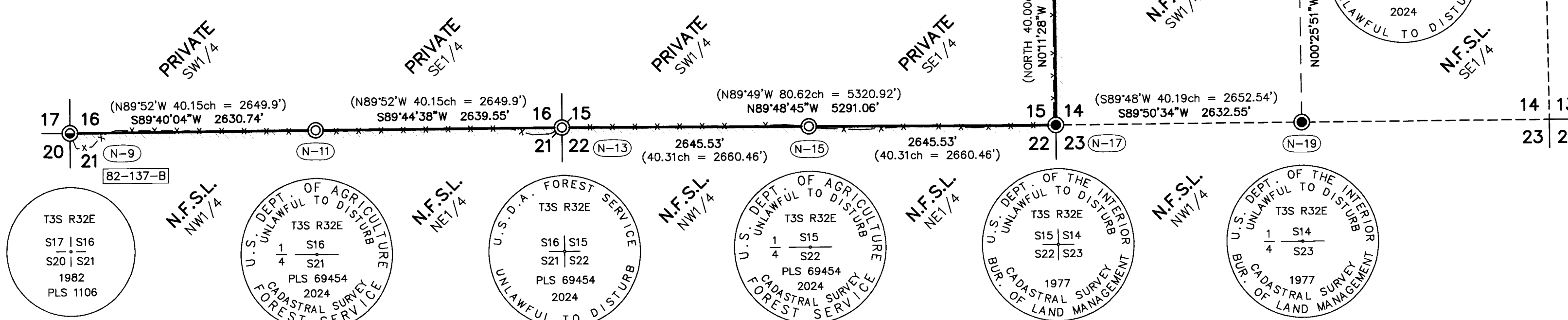
- FOUND 2 1/2" GALVANIZED IRON PIPE WITH ATTACHED 3 1/4" BLM BRASS CAP MARKED AS SHOWN - FROM 1977 BLM REMONUMENTATION PROJECT
- ⊙ FOUND 2 1/2" ALUMINUM PIPE WITH ATTACHED 2 1/2" ALUMINUM CAP MARKED AS SHOWN
- ⊙ FOUND 2 1/2" GALVANIZED IRON PIPE WITH ATTACHED 2 1/2" BRASS CAP MARKED AS SHOWN
- ⊙ FOUND 1 1/2" GALVANIZED IRON PIPE WITH ATTACHED 2 1/2" BRASS CAP MARKED AS SHOWN
- ⊙ SET A 2 1/2"x30" ALUMINUM PIPE WITH 3 1/4" USFS ALUMINUM CAP MARKED AS SHOWN. SEE CORNER MONUMENTATION RECORDS FILED SEPARATELY FOR MORE DETAILS
- ⊙ SET A 5/8"x24" IRON PIN SET IN A DRILL HOLE IN ROCK, WITH ATTACHED 3 1/4" BRASS CAP MARKED AS SHOWN SEE CORNER MONUMENTATION RECORDS FILED SEPARATELY FOR MORE DETAILS
- () RECORD BEARING AND DISTANCE FROM GENERAL LAND OFFICE SURVEY BY GEORGE S. PERSHIN, U.S. DEPUTY SURVEYOR, UNDER CONTRACT NO. 430, DATED MARCH 23, 1882
- [] RECORD BEARING AND DISTANCE FROM "INDIAN 1987 CADASTRAL SURVEY" BY DAVID L. HADDOCK, PLS #852 RECORDED NOVEMBER 23, 1987 AS SURVEY NO. 87-68-B IN THE UMATILLA COUNTY SURVEYOR'S OFFICE
- [] RECORD BEARING AND DISTANCE FROM SURVEY BY STEPHEN K. HADDOCK, PLS #56295 RECORDED 11/21/2022 AS SURVEY NO. 22-131-B IN THE UMATILLA COUNTY SURVEYOR'S OFFICE
- (A-1) PLSS CORNER INDEX DESIGNATION
- XX-XX-X UMATILLA COUNTY SURVEY NUMBER FROM WHICH FOUND MONUMENT WAS ESTABLISHED OR SUBSEQUENTLY PERPETUATED
- N.F.S.L. NATIONAL FOREST SYSTEM LAND
- NATIONAL FOREST BOUNDARY POSTED THIS SURVEY WITH ALUMINUM POSTS WITH PROPERTY BOUNDARY SIGNS ATTACHED
- x - x - EXISTING FENCE LINE

BASIS OF BEARINGS

GEODETIC NORTH
DERIVED BY G.P.S. OBSERVATION TAKEN AT THE
NORTHWEST CORNER SECTION 22, T. 3S., R. 32E., W.M.



RECEIVED BY
Umatilla County Surveyor
Date: 9/4/24
Rec'd By: CT
No.: 24-078-B



I HEREBY CERTIFY THAT THIS SURVEY WAS PERFORMED AT THE REQUEST OF THE UMATILLA NATIONAL FOREST

 FOREST SUPERVISOR
 DATE: 09-03-2024

REFERENCES

- UMATILLA COUNTY SURVEY NO.'S 82-137-B, 84-122-R, 87-68-B, 87-27-R & 22-131-B
- DEED RECORD INSTRUMENT NO.'S 2001-3850311, 2012-5970577, 2018-6730454, 2019-6920635, 2018-6670150 & 2022-7460278
- GENERAL LAND OFFICE FIELD NOTES
- B.L.M. FIELD NOTES
- U.S. FOREST SERVICE CORNER CARDS



UNITED STATES DEPARTMENT OF AGRICULTURE FOREST SERVICE REGION 6 - NORTHEAST OREGON LAND ZONE 1550 DEWEY AVENUE, SUITE A - BAKER CITY, OREGON 97814 - (541) 523-1283	
MAP OF SURVEY A DEPENDENT RESURVEY AND SUBDIVISION OF SECTION 14, AND A DEPENDENT RESURVEY OF THE WEST LINE OF SECTION 12 AND THE NORTH LINES OF SECTIONS 21 & 22, T. 3S., R. 32E., W.M., UMATILLA COUNTY, OREGON	
SURVEYED FOR	UMATILLA NATIONAL FOREST
SURVEYED BY	JLH SURVEY COMPLETED: 6/26/2024
SCALE: 1" = 1000'	DRAWN BY: JLH