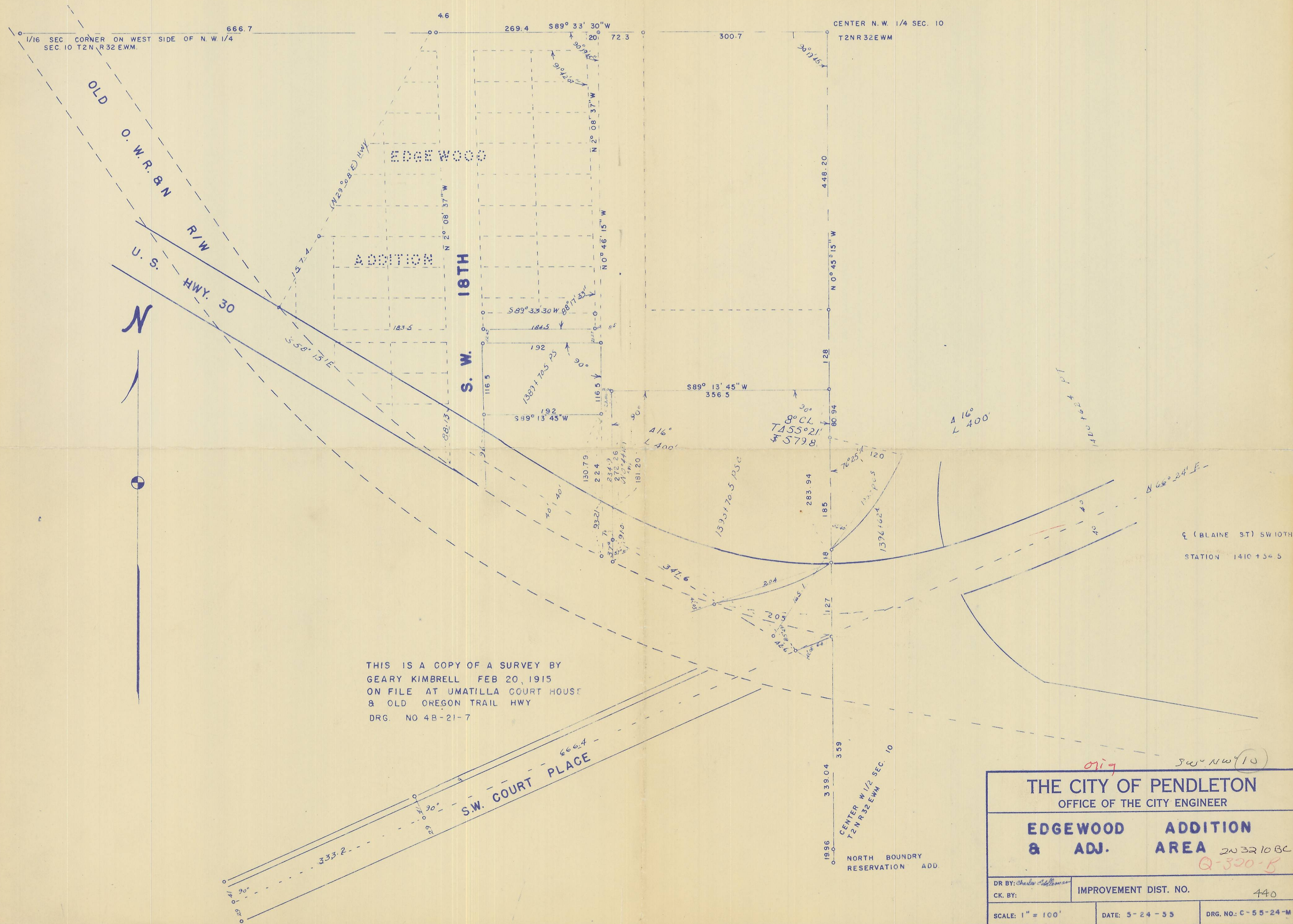


Q-320-B



THIS IS A COPY OF A SURVEY BY
 GEARY KIMBRELL FEB 20, 1915
 ON FILE AT UMATILLA COURT HOUSE
 & OLD OREGON TRAIL HWY
 DRG. NO 4B-21-7

THE CITY OF PENDLETON OFFICE OF THE CITY ENGINEER		
EDGEWOOD & ADJ.	ADDITION AREA	2032108C Q-320-B
DR BY: <i>Charles Adleman</i> CK BY:	IMPROVEMENT DIST. NO. 440	
SCALE: 1" = 100'	DATE: 5-24-55	DRG. NO.: C-55-24-M