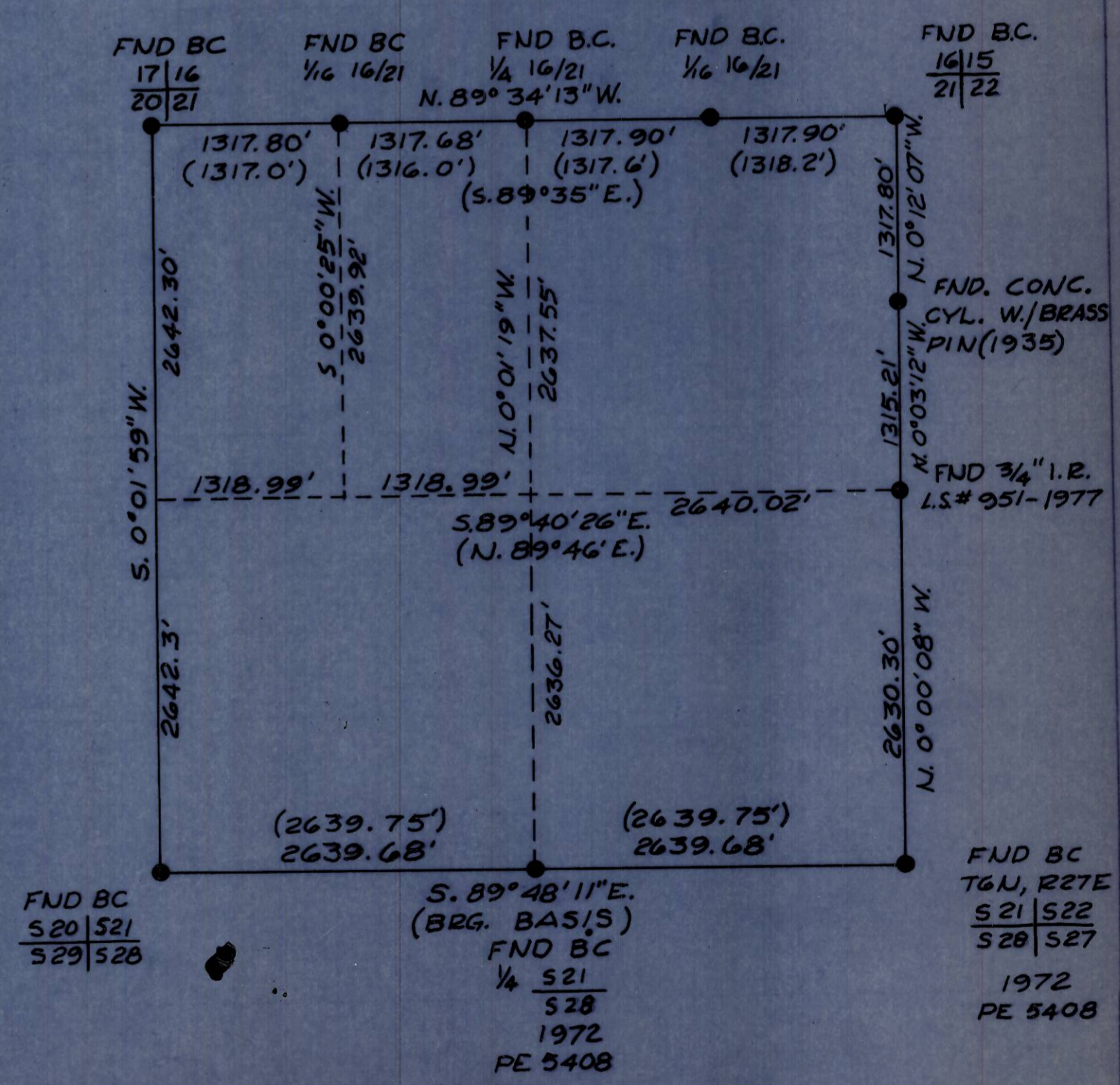


☉ R.R. CURVE DATA
 $\Delta = 10^\circ 41' 53''$
 $(\Delta 10^\circ 40')$
 $R = 2856.25'$
 $T = 267.43'$
 $L = 533.30'$
 $C = 532.55'$

R/W CURVE DATA
 $\Delta = 10^\circ 41' 53''$
 $R = 2906.20'$
 $L = 542.64'$
 $T = 272.11'$
 $C = 541.88'$
 $N. 76^\circ 33' 35'' E.$

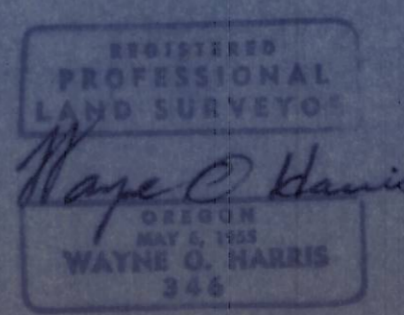
- ① N. 71° 12' 38" E.
C. DIST. 100.00'
- ② N. 73° 10' 53" E.
C. DIST. 100.00'
- ③ N. 75° 09' 11" E.
C. DIST. 100.00'
- ④ N. 77° 07' 29" E.
C. DIST. 100.00'
- ⑤ N. 79° 05' 47" E.
C. DIST. 100.00'
- ⑥ N. 81° 04' 05" E.
C. DIST. 41.88'



NOTES:
 BEARINGS ARE BASED UPON TIES TO N.O.S. STATIONS "HAWK" & IRRIGON. THOSE DISTANCES AND BEARINGS SHOWN ARE TRUE

REF: SURVEY BY PE. 5408 - APRIL 1975
 MORROW COUNTY DEED RECORDS M-1766 & M-4133
 SUB-DIVISION OF PART OF SECTION 21, T.5N., R.27E. W.M. BY PE #1033
 FILED MORROW COUNTY PLAT BOOK MAY, 1935.
 (THETA CORR. +0°46'06")

LEGEND:
 ● POINTS FND AS NOTED
 ○ 1/2" x 24" I. PINS SET
 () RECORD



COMPOSITE MAP
 SECTION 21, T.5N., R.27E. W.M.
 (NOT TO SCALE)

SURVEY FOR GLENN BATES SECTION 21, T.5N., R.27E.W.M.		WAYNE HARRIS CO. INC. ENGINEERS, SURVEYORS - PENDLETON			
SCALE	DATE	DWN	CHK	DWG. NO.	
SHOWN	02-11-79	I.D.	WOH	78-157B	

Q-608-B