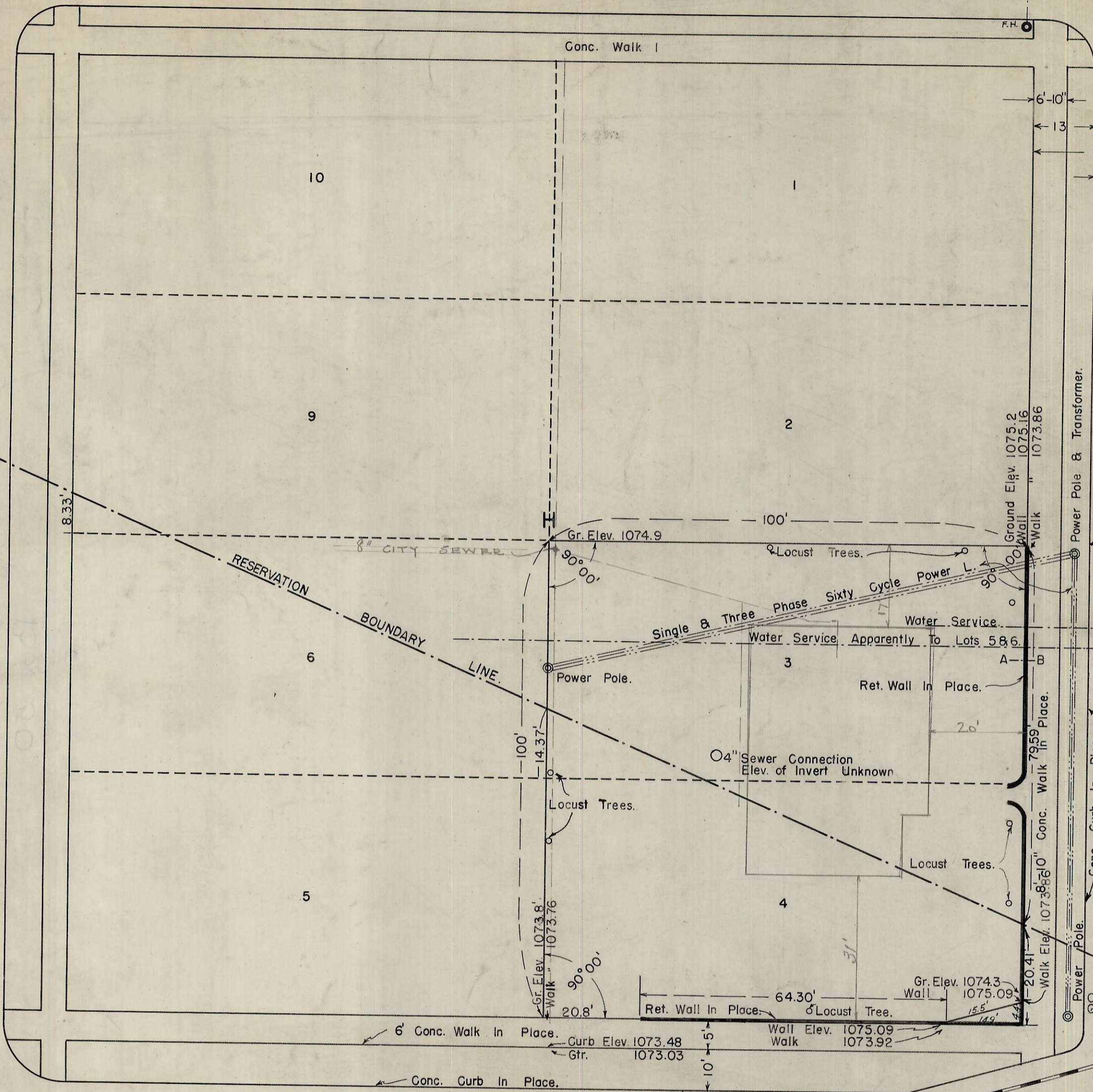


EMIGRANT AVE. (Formerly) WEBB ST.

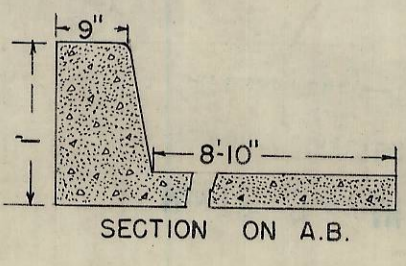
12" C.I. Water Main  
BLACK TOP PAVEMENT.

S.E. 2ND ST. (Formerly) JOHNSON ST. N. 23° 36' W.

S.E. 3RD ST. (Formerly) THOMPSON ST. N. 23° 36' W.



PLAT OF LOTS THREE AND FOUR, BLOCK H  
SOUTH PENDLETON AND RESERVATION ADN.  
CITY OF PENDLETON, UMATILLA COUNTY,  
OREGON.



County Health Center

Scale 1" = 20'

2N3211BB

Q-1438-B

MAR 7 1942

Project Manager

79-0

DOCKET No 35-132  
PENDLETON, ORE.  
HEALTH CENTER.