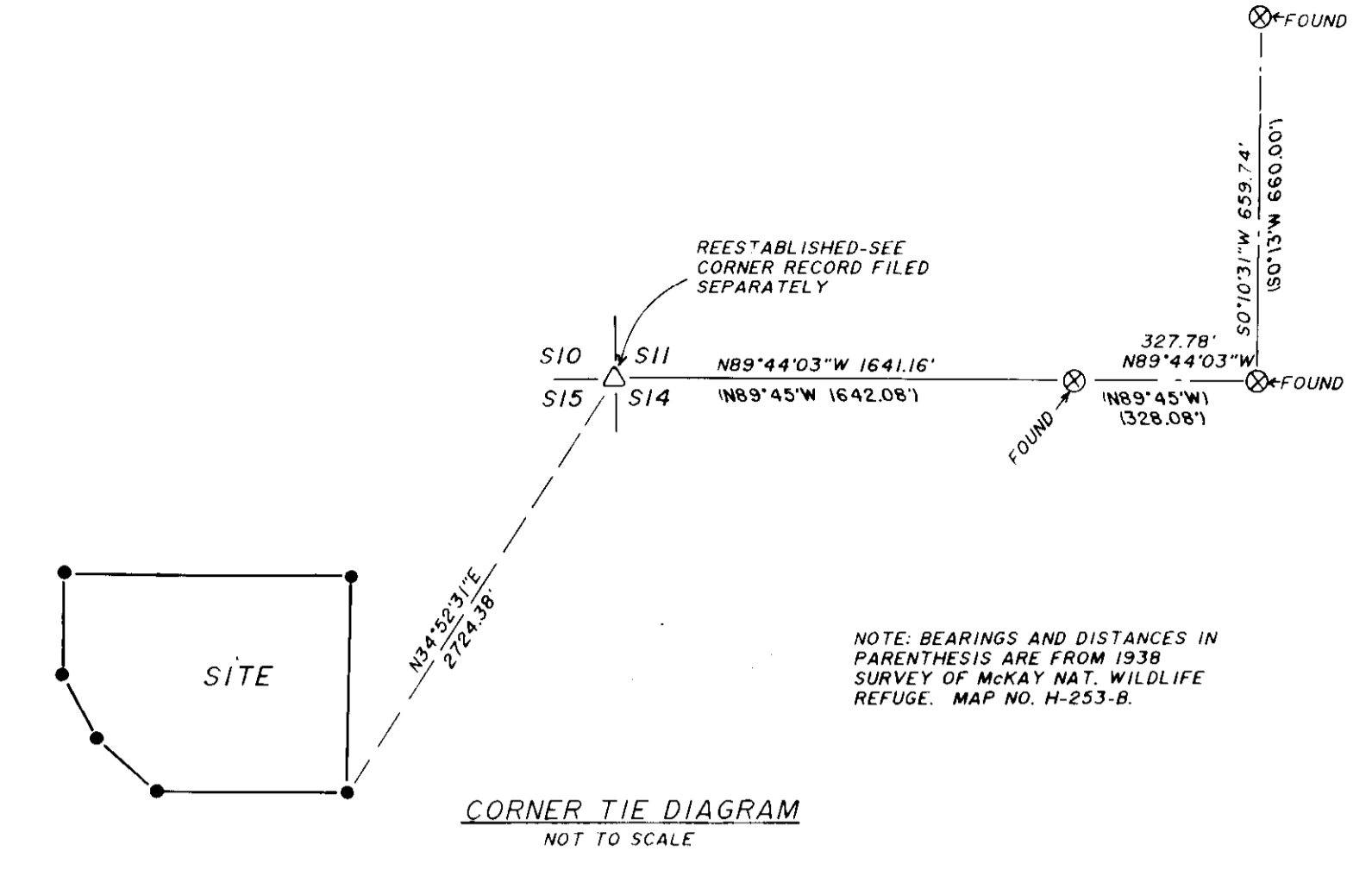


BEARINGS ARE BASED ON SOLAR OBSERVATION
1800 FEET WEST OF THE NE CORNER OF SECTION 15.



LEGEND

- - SET 5/8 BY 30" IRON PIN WITH 1 1/2" YELLOW PLASTIC CAP MARKED "WR. WELLS PLS 1106".
- △ - REESTABLISHED THE NE CORNER OF SECTION 15, T1N, R32E. SET 2 1/2" BRASS CAP ON 1 1/2" BY 30" GALV. IRON PIPE. SEE CORNER RECORD FILED SEPARATELY.
- ⊕ - FOUND 3" BRASS CAP ON 3" CONCRETE POST. THESE MONUMENTS ARE FROM THE 1938 MCKAY RESERVIOR SURVEY, SEE MAP NO. H-253-B.

NOTES

1. WATER AND SANITARY SEWER SYSTEMS ARE OWNED AND OPERATED BY PENDLETON COUNTRY CLUB. OBSERVATION OF WATER PRESSURE GAUGE IN BOILER ROOM OF CLUBHOUSE ON APRIL 29, 1988, INDICATES PRESSURE OF 40 TO 50 P.S.I..
2. NATURAL GAS IS SUPPLIED BY CASCADE NATURAL GAS. LINE PRESSURE IN THIS AREA IS ABOUT 40 P.S.I..
3. ELECTRIC POWER IS SUPPLIED BY PACIFIC POWER AND LIGHT CO. SINGLE AND 3 PHASE POWER IS AVAILABLE IN A VARIETY OF VOLTAGES.
4. TELEVISION CABLE IS SUPPLIED BY PENDLETON CABLE.
5. TELEPHONE SERVICE IS SUPPLIED BY TELEPHONE UTILITIES OF EASTERN OREGON, INC.
6. ZONING IS EFU (EXCLUSIVE FARM USE). BUILDING SETBACKS ARE 50 FEET.

NARRATIVE OF SURVEY

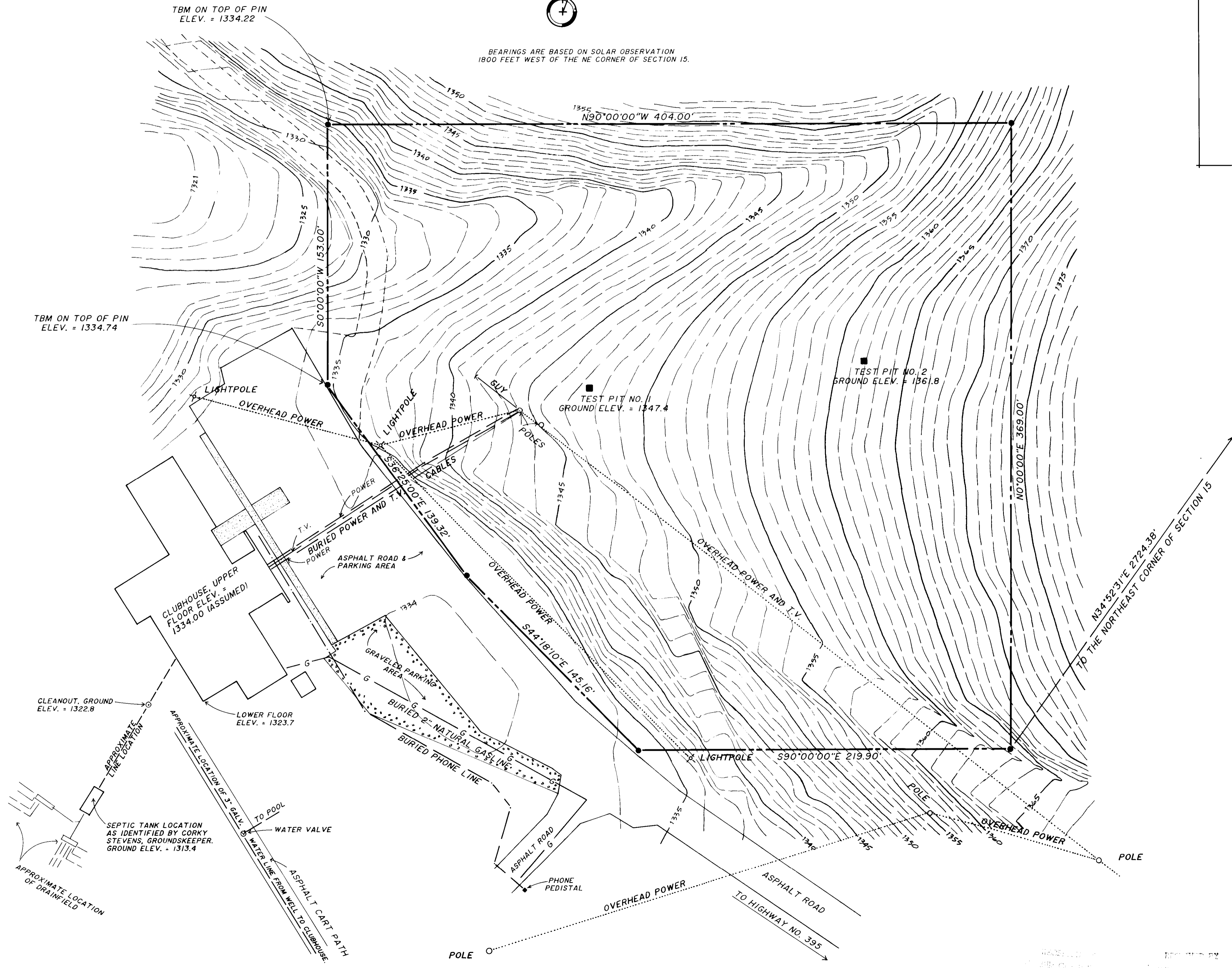
THE PURPOSE OF THIS SURVEY WAS TO LOCATE AND MONUMENT THE BOUNDARIES OF A PARCEL OF LAND WHICH IS PROPOSED AS A TENNIS FACILITY BY PENDLETON TENNIS CENTER, INC.. THE TENNIS FACILITY PARCEL IS LOCATED WITHIN THE OVERALL BOUNDARIES OF LAND OWNED BY THE PENDLETON COUNTRY CLUB. IN ADDITION TO PARCEL BOUNDARIES, CERTAIN TOPOGRAPHIC FEATURES, BUILDINGS AND UTILITIES WERE LOCATED AS SHOWN ON THIS PLAT.

DURING THIS SURVEY, THE NORTHEAST CORNER OF SECTION 15, T1N, R32E, W.M. WAS REESTABLISHED FROM MONUMENTS FOUND ON THE WEST BOUNDARY OF MCKAY NATIONAL WILDLIFE REFUGE. A LAND CORNER RECORD IS FILED SEPARATELY FOR THIS CORNER.

BEARINGS SHOWN ARE TRUE, BASED ON SOLAR OBSERVATION 1800 FEET WEST OF THE NORTHEAST CORNER OF SECTION 15. SURVEY MEASUREMENTS WERE MADE WITH AN AUTOMATIC LEVEL, 20 SECOND THEODOLITE AND INFRA-RED DISTANCE MEASURING DEVICE.

William R. Wells

WILLIAM R. WELLS, PLS LAND SURVEYING SERVICES P.O. BOX 1696 PENDLETON, OREGON 97801 PHONE: 503 276 6362		PROJECT: PENDLETON TENNIS CENTER INC. LOCATED IN THE NE 1/4 OF SECTION 15, T 1 N, R 32 E, WM, UMATILLA COUNTY, OR.	
Date: 5/16/88	Dr. By:		
Ck. By: WRW	No: 8-39		



6-88
88-20-C
monumentation