

BASIS OF BEARING:

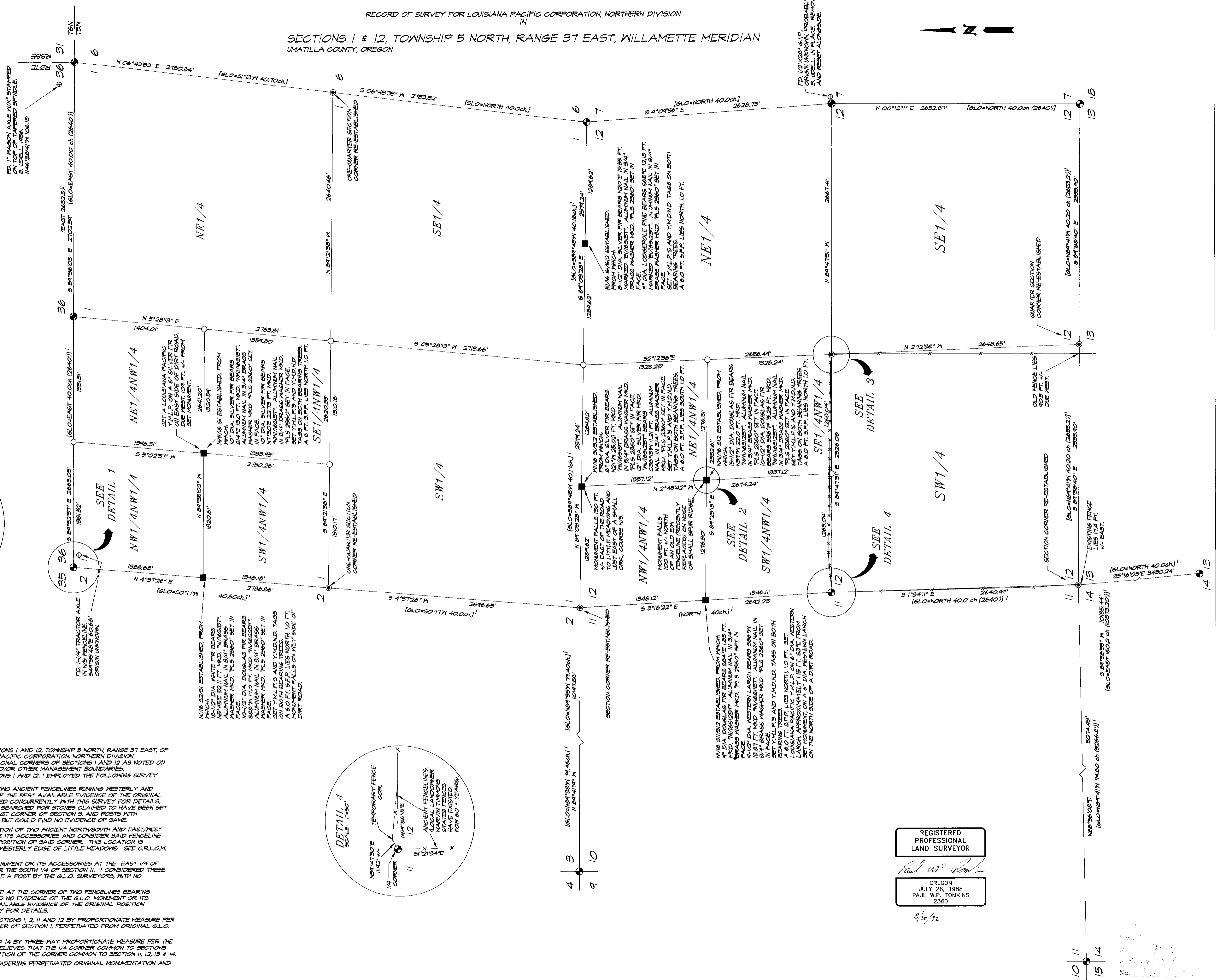
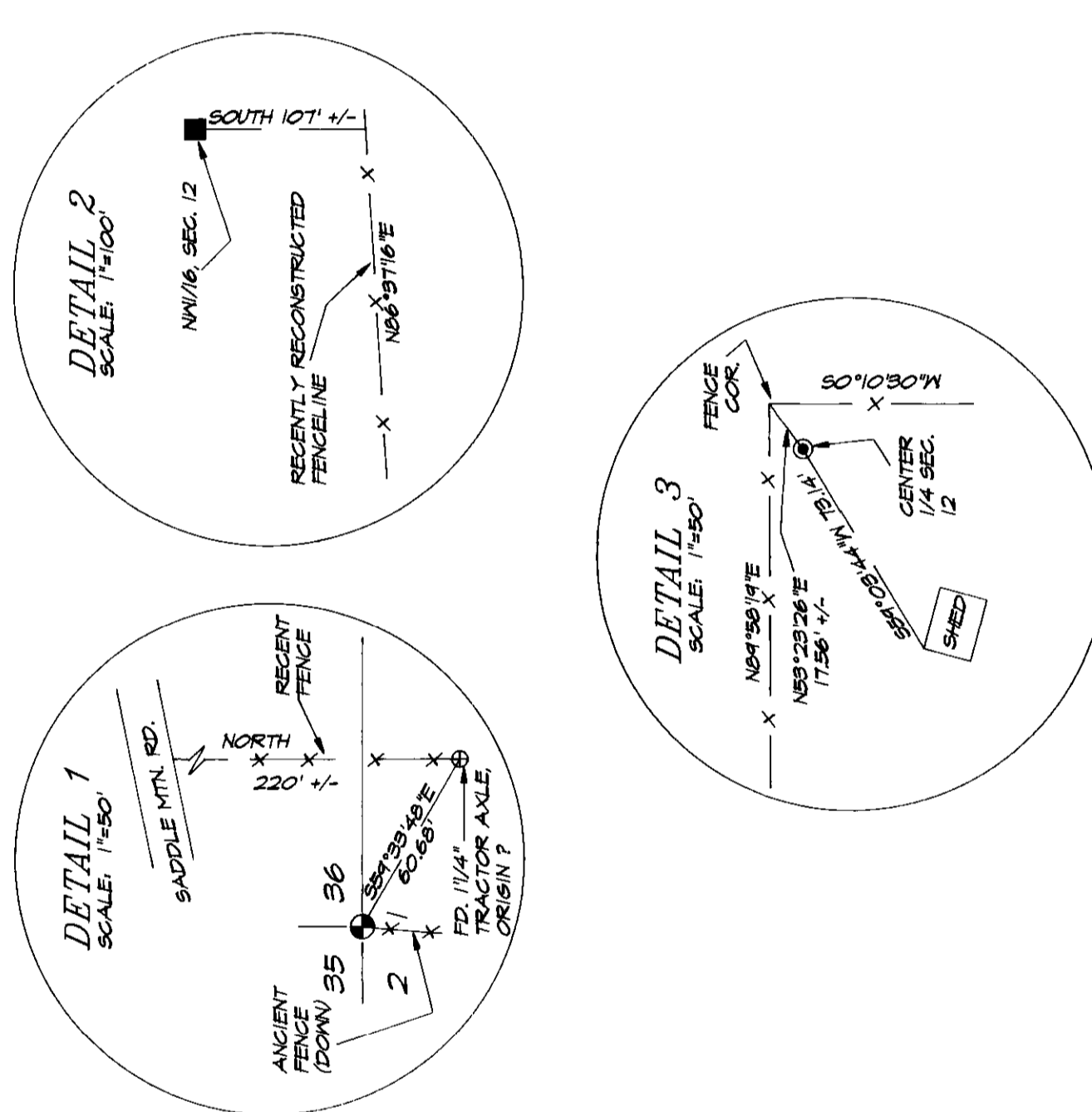
BEARINGS ARE TRUE, BASED UPON SOLAR OBSERVATION AT 45°29'36.8" N. LATITUDE AND 116°07'26.5" W. LONGITUDE USING THE HOUR ANGLE METHOD.

LEGEND:

- DENOTES POSITION CALCULATED ONLY, NOT FOUND, NOT SET.
- DENOTES MONUMENT ESTABLISHED FROM ORIGINAL GENERAL LAND OFFICE EVIDENCE OR A VERIFIABLE PERPETUATION OF SAME. SET AS 1 1/2" X 3/8" STANDARD 'HOFFLAND' SURVEY MONUMENT, FLANGED AT BASE, WITH 2-1/2" BRONZE CAP DULY MARKED, TOP FLUSH WITH GROUND SURFACE UNLESS NOTED OTHERWISE. SEE CERTIFIED LAND CORNER RECORD FILED WITH THE UMATILLA COUNTY SURVEYOR CONCURRENTLY WITH THIS SURVEY.
- ⊙ DENOTES SECTION OR QUARTER SECTION CORNER CONSIDERED LOST OR OBLITERATED, RE-ESTABLISHED BY PROPORTIONATE MEAS AS NOTED ON THE ACCOMPANYING PLAT. SET 1 1/2" X 3/8" STANDARD 'HOFFLAND' SURVEY MONUMENT, FLANGED AT BASE, WITH 2-1/2" BRONZE CAP DULY MARKED, TOP FLUSH WITH GROUND SURFACE UNLESS NOTED OTHERWISE. SEE CERTIFIED LAND CORNER RECORD FILED WITH THE UMATILLA COUNTY SURVEYOR CONCURRENTLY WITH THIS SURVEY.
- DENOTES MONUMENT ESTABLISHED THIS SURVEY, SET 5/8" X 3/8" IRON NAIL WITH YELLOW PLASTIC CAP MARKED 'TOMKINS SURVEY', TOP FLUSH WITH GROUND SURFACE, WITH ACCESSORIES AS NOTED.
- ⊕ DENOTES MONUMENT FOUND, TYPE AND/OR ORIGIN AS NOTED.
- ⊖ INDICATES GENERAL LAND OFFICE RECORD VALUE, GEORGE WILLIAMS, DEPUTY SURVEYOR, CONTRACT NO. 176, 20 JULY, 1872.
- ⊗ INDICATES GENERAL LAND OFFICE RECORD VALUE, Wm. H. ODELL AND Wm. S. LEWIS, DEPUTY SURVEYORS, CONTRACT NO. 110, 7 FEB. 1868.
- ⊘ INDICATES RECORD VALUE, BERT M. UDELL, SURVEYOR FOR JAYMAR LUMBER COMPANY, NOT OF RECORD (DATA RECOVERED FROM INFORMATION GIVEN ON LOCATION POSTERS), DATED 1956.
- ⊙ YELLOW METAL LOCATION POSTER.
- Y.M.L.P. YELLOW METAL DO NOT DISTURB SIGN.
- Y.M.D.N.D. GALVANIZED IRON PIPE.
- G.I.P. YELLOW PLASTIC CAP.
- Y.P.C. CERTIFIED RECORD OF LAND CORNER MONUMENTATION.
- U.S.B.L.M. UNITED STATES BUREAU OF LAND MANAGEMENT, MANUAL OF INSTRUCTIONS FOR THE SURVEY OF PUBLIC LANDS, 1973 EDITION.
- M.S.P.L.U.S. 1973 EXISTING FENCELINES (BARBED WIRE TYPE).

RECORD OF SURVEY FOR LOUISIANA PACIFIC CORPORATION, NORTHERN DIVISION

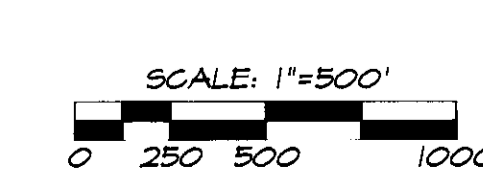
IN SECTIONS 1 & 12, TOWNSHIP 5 NORTH, RANGE 37 EAST, WILLAMETTE MERIDIAN UMATILLA COUNTY, OREGON



NARRATIVE:

THIS SURVEY WAS CONDUCTED AS A DEPENDENT RESURVEY OF SECTIONS 1 AND 12, TOWNSHIP 5 NORTH, RANGE 37 EAST, OF THE WILLAMETTE MERIDIAN UMATILLA COUNTY, OREGON, FOR LOUISIANA PACIFIC CORPORATION, NORTHERN DIVISION. THE PURPOSE OF THIS SURVEY WAS TO MONUMENT CERTAIN SUBDIVISIONAL CORNERS OF SECTIONS 1 AND 12 AS NOTED ON THE ACCOMPANYING PLAT TO FACILITATE THE MARKING OF HARVEST AND/OR OTHER MANAGEMENT BOUNDARIES. TO DETERMINE THE LOCATION OF SUBDIVISIONAL LINES WITHIN SECTIONS 1 AND 12, I EMPLOYED THE FOLLOWING SURVEY METHODS, IN ACCORDANCE WITH THE U.S.B.L.M. M.S.P.L.U.S., 1973:

1. HELD THE SOUTHWEST CORNER SECTION 3 TO LIE AT THE CORNER OF TWO ANCIENT FENCELINES RUNNING WESTERLY AND SOUTHERLY FROM THIS POINT. I CONSIDERED THE EXISTING FENCELINES TO BE THE BEST AVAILABLE EVIDENCE OF THE ORIGINAL LOCATION OF THE SOUTHWEST CORNER OF SECTION 3. SEE C.R.L.C.M. FILED CONCURRENTLY WITH THIS SURVEY FOR DETAILS. I FOUND NO EVIDENCE OF THE ORIGINAL STONE MONUMENT. I DILIGENTLY SEARCHED FOR STONES CLAIMED TO HAVE BEEN SET BY S.L.O. SURVEYORS ODELL AND LEWIS AT THE SOUTH 1/4 AND SOUTHEAST CORNER OF SECTION 3 AND POSTS WITH ACCESSORIES AT THE SOUTH 1/4 AND SOUTHEAST CORNER OF SECTION 2, BUT COULD FIND NO EVIDENCE OF SAME.
2. HELD THE SOUTHEAST CORNER OF SECTION 1 TO LIE AT THE INTERSECTION OF TWO ANCIENT NORTH/SOUTH AND EAST/WEST FENCELINES. I COULD FIND NO EVIDENCE OF THE ORIGINAL MONUMENT OR ITS ACCESSORIES AND CONSIDER SAID FENCELINE INTERSECTION TO BE THE BEST AVAILABLE EVIDENCE OF THE ORIGINAL POSITION OF SAID CORNER. THIS LOCATION IS CONSISTENT WITH THE S.L.O. CALL IS FOR THE MONUMENT TO FALL ON THE WESTERLY EDGE OF LITTLE MEADOWS. SEE C.R.L.C.M. FILED CONCURRENTLY WITH THIS SURVEY FOR DETAILS.
3. I SEARCHED FOR BUT COULD FIND NO EVIDENCE OF THE ORIGINAL MONUMENT OR ITS ACCESSORIES AT THE EAST 1/4 OF SECTION 1, THE SOUTH 1/4 AND THE SOUTHWEST CORNER OF SECTION 12, OR THE SOUTH 1/4 OF SECTION 11. I CONSIDERED THESE LOCATIONS TO BE LOST. THE SOUTH 1/4 OF SECTION 11 WAS CALLED TO BE A POST BY THE S.L.O. SURVEYORS, WITH NO ACCESSORIES. I MADE NO SEARCH FOR ITS POSITION.
4. I HELD THE ONE-QUARTER CORNER BETWEEN SECTIONS 11 AND 12 TO BE AT THE CORNER OF TWO FENCELINES BEARING SOUTH AND EAST FROM THIS POSITION. I SEARCHED FOR BUT COULD FIND NO EVIDENCE OF THE S.L.O. MONUMENT OR ITS ACCESSORIES. I CONSIDERED SAID FENCE CORNER TO BE THE BEST AVAILABLE EVIDENCE OF THE ORIGINAL POSITION FOR THIS CORNER. SEE C.R.L.C.M. FILED CONCURRENTLY WITH THIS SURVEY FOR DETAILS.
5. I COMPUTED THE POSITION FOR THE SECTION CORNER COMMON TO SECTIONS 1, 2, 11 AND 12 BY PROPORTIONATE MEASURE PER U.S.B.L.M. M.S.P.L.U.S., 1973, HOLDING FOR CONTROL THE NORTHWEST CORNER OF SECTION 1, PERPETUATED FROM ORIGINAL S.L.O. EVIDENCE, AND THE CORNER POSITIONS HELD IN ITEM NO. 5, 1, 3 AND 4.
6. I COMPUTED THE SECTION CORNER COMMON TO SECTIONS 11, 12, 13 AND 14 BY THREE-WAY PROPORTIONATE MEASURE PER THE U.S.B.L.M. M.S.P.L.U.S., 1973, CHAPTER 3, SECTION 24. AS THIS SURVEYOR BELIEVES THAT THE 1/4 CORNER COMMON TO SECTIONS 13 AND 14 WAS BLUNDERED, AND HAS NO BEARINGS ON THE ORIGINAL POSITION OF THE CORNER COMMON TO SECTIONS 11, 12, 13 & 14.
7. I SUBDIVIDED SECTIONS 1 AND 12 PER U.S.B.L.M. M.S.P.L.U.S., 1973, CONSIDERING PERPETUATED ORIGINAL MONUMENTATION AND POSITIONS COMPUTED IN ITEM NO. 5, 1 THROUGH 6.



NO.	REVISIONS	BY	APPR. DATE	DESIGNED	SCALE	
					HOR.	VERT.
				DRAWN	S.A.C.	DATE
				CHECKED	P.W.T.	AUGUST 15, 1992
				APPROVED		

REGISTERED PROFESSIONAL LAND SURVEYOR
Paul W.P. Tomkins
 OREGON
 JULY 26, 1988
 PAUL W.P. TOMKINS
 2360

PAUL W.P. TOMKINS, LAND SURVEYOR
 6 1/2 N. SECOND SUITE 303 WALLA WALLA, WA. 99362
 SURVEY FOR LOUISIANA PACIFIC CORP.
 SECTIONS 1 & 12, T. 5 N., R. 37 E., W.M.
 FOR: LOUISIANA PACIFIC CORPORATION, NORTHERN DIVISION
 SHEET 1 OF 1