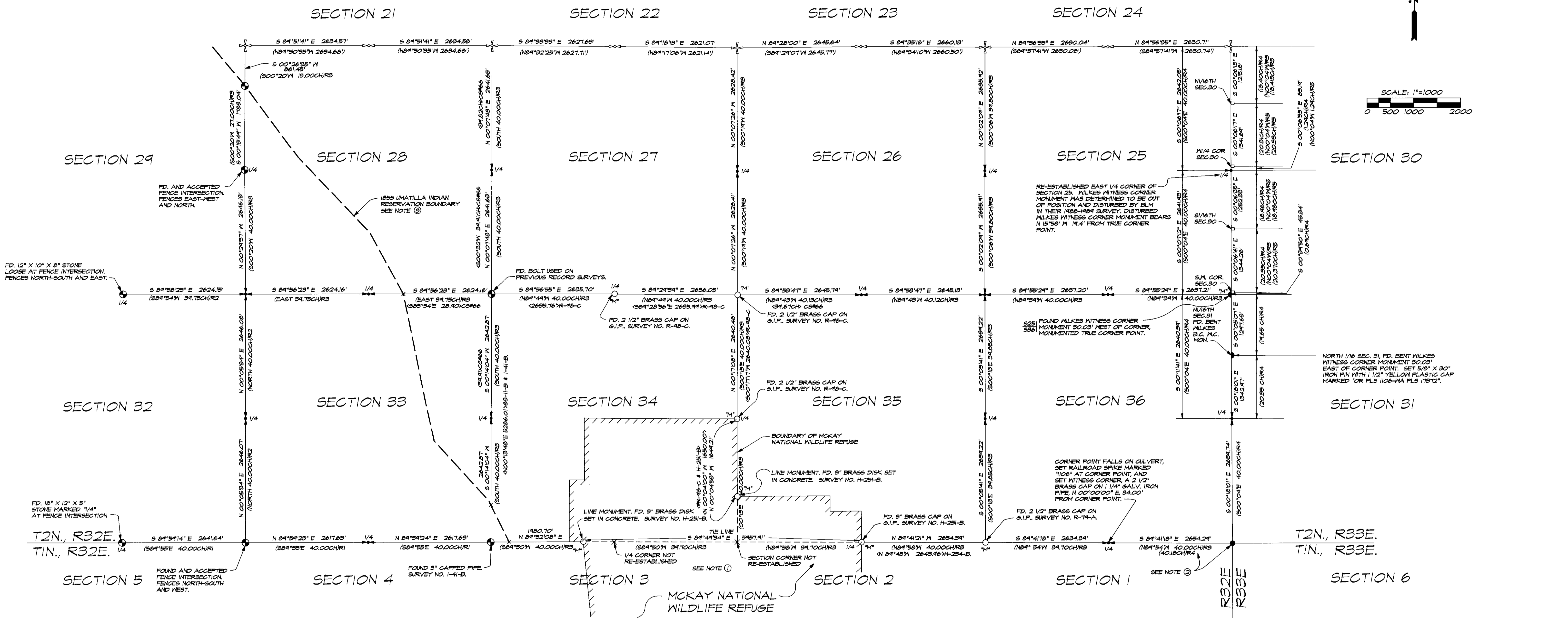
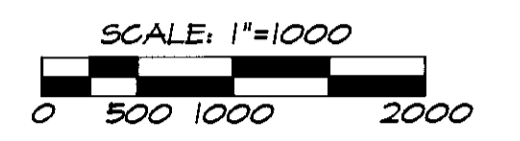
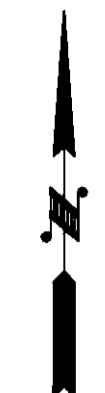


RECORD OF SURVEY

SECTIONS 25 THROUGH 28 AND SECTIONS 33 THROUGH 36
T2N., R32E., W.M., UMATILLA COUNTY, OREGON.



NOTES:

- ① MAPS RECORDED FOR THE MCKAY NATIONAL WILDLIFE REFUGE BOUNDARY DO NOT SHOW ADEQUATE INFORMATION TO DEFINITELY LOCATE THE SOUTH 1/4 OR S.E. CORNER OF SECTION 34. BOTH OF THESE CORNERS FALL IN THE MCKAY POOL. SOME CORNERS OF THE REFUGE BOUNDARY ARE CORNERS ON ALIQUOT PARTS OF SECTION 34, INDICATING SECTION 34 WAS SUBDIVIDED FOR THE REFUGE SURVEY. IT APPEARS FROM THE REFUGE SURVEY MAPS THE S.E. CORNER OF SECTION 34 WOULD BE CALCULATED BY PROJECTING THE SECTION LINE SOUTHERLY FROM THE EAST 1/4 OF SECTION 34, THROUGH THE LINE MONUMENT, A RECORD DISTANCE OF 480 FEET. THE S.E. CORNER OF SECTION 34 AND THE SOUTH 1/4 CORNER OF SECTION 34 WOULD ALSO BE CALCULATED BY SINGLE PROPORTION MEASUREMENT ALONG THE TOWNSHIP LINE. POSITIONS FOR THE CENTER 1/4 CORNERS OF SECTION 34 AND 35 ARE SHOWN ON THE REFUGE MAPS. THE LINE INFORMATION BETWEEN CORNERS EAST, WEST AND NORTH OF THE S.E. CORNER AND SOUTH 1/4 CORNER OF SECTION 34 ARE SHOWN ON THIS PLAT.
- ② I HAVE RETRACED THE WILKES 1917 SURVEY FOR 5 MILES ALONG THE RANGE LINE BETWEEN TOWNSHIPS 2 NORTH, RANGES 32 AND 33 EAST, W.M., AND HAVE FOUND WILKES MONUMENT LOCATIONS TO BE RELIABLE AND NORMALLY VERY CLOSE TO RECORD POSITION. THE TOWNSHIP CORNER AT THE SOUTHEAST CORNER OF SECTION 36 IS 20 FEET SOUTH AND 10 FEET EAST OF WHERE WILKES RECORD MEASUREMENTS WOULD HAVE PLACED IT. ALTHOUGH THIS MAGNITUDE OF ERROR IS UNUSUAL FOR WILKES, THE TOWNSHIP CORNER IS MONUMENTED AND WITNESSED, AND HAS BEEN USED ON ALL RECENT RECORD SURVEYS. I ACCEPT AND AGREE TO THE MONUMENTED LOCATION OF THIS TOWNSHIP CORNER BUT IN RE-ESTABLISHING THE SOUTH 1/4 CORNER OF SECTION 36, I USE THE CURRIN AND NOLAND RECORD FOR PROPORTIONING, RATHER THAN INCLUDING THE "TIE" DISTANCE OF 40.18 CHAINS REPORTED BY WILKES BETWEEN THE SOUTH 1/4 CORNER OF SECTION 36 AND THE TOWNSHIP CORNER. USING THE CURRIN AND NOLAND RECORD SUPPORTS EARLIER SURVEY R-74-A, WHERE THE SOUTHWEST CORNER OF SECTION 36 WAS RE-ESTABLISHED USING THE CURRIN AND NOLAND RECORD.
- ③ THE CURRIN AND NOLAND SURVEY RECORD REPORTS CLOSING CORNER MONUMENTS ESTABLISHED ON THE INTERSECTION OF SECTION LINES AND THE 1855 UMATILLA RESERVATION BOUNDARY. WITH THE EXCEPTION OF THE CLOSING CORNER BETWEEN SECS. 28 AND 29, NONE OF THESE CLOSING CORNERS WERE RECOVERED.

LEGEND

- ⊕ - PUBLIC LAND SURVEY MONUMENT OF RECORD ON SURVEY NO. 93-054-C. SEE RECORDED MAP AND CORNER RECORDS.
- ⊕ - RE-ESTABLISHED CORNER AND REMONUMENTED WITH A 2 1/2" BRASS CAP ON A 1 1/4" X 30" GALVANIZED IRON PIPE, UNLESS OTHERWISE NOTED. SEE CORNER RECORD FILED SEPARATELY.
- ⊕ - FOUND CORNER MONUMENT AS NOTED, MAINTAINED CORNER.
- ⊕ - FOUND CORNER MONUMENT AND REMONUMENTED WITH A 2 1/2" BRASS CAP ON A 1 1/4" S.I.P. - SEE CORNER RECORD FILED SEPARATELY.
- "M" - THE LETTER "M" BESIDE A CORNER MONUMENT SYMBOL INDICATES THE CORNER MONUMENT WAS MAINTAINED DURING THIS SURVEY. SEE CORNER RECORD FILED SEPARATELY.
- ⊕ - FOUND A 2 1/2" BRASS CAP ON A 2" S.I.P. FROM SLO SURVEY BY L.E. WILKES IN 1917.
- ⊕ - FOUND 3" BLM BRASS CAP ON 2 1/2" STAINLESS STEEL PIPE FROM 1908-1909 SURVEY OF SECTION 30, T2N., R32E., W.M.
- S.I.P. - INDICATES GALVANIZED IRON PIPE.
- (XX) - RECORD FROM SURVEY NO. 93-054-C.
- (XX)R1 - RECORD FROM SLO SURVEY BY DAVID THOMPSON, UNDER CONTRACT NO. 106, DATED AUGUST 16, 1864.
- (XX)R2 - RECORD FROM SLO CONTRACT NO. 107. DANIEL CHAPLIN, DATED SEPTEMBER 21, 1864.
- (XX)R3 - RECORD FROM SLO SPECIAL CONTRACT DATED MAY 4, 1867, BY CURRIN AND NOLAND.
- (XX)R4 - RECORD FROM SURVEY BY L.E. WILKES, SLO SURVEYOR, IN 1917.
- (XX)R7 - RECORD FROM BLM SURVEY IN 1908 & 1909, FOR SECTION 30, T2N., R32E., W.M.
- XXXX - OTHER RECORD SURVEY DIMENSIONS - RECORD INDICATED.

NARRATIVE OF SURVEY

THE PURPOSE OF THIS SURVEY WAS TO RECOVER, RE-ESTABLISH, REMONUMENT OR MAINTAIN CERTAIN SECTION, 1/4 SECTION OR OTHER CONTROLLING CORNERS IN SECTIONS THROUGH 28 AND SECTIONS 33 THROUGH 36 OF TOWNSHIP 2 NORTH, RANGE 32 EAST, W.M. THE SURVEY WORK WAS AUTHORIZED BY UMATILLA COUNTY BOARD OF COMMISSIONERS AND FUNDED BY THE PUBLIC LAND CORNER MONUMENTATION FUND.

INFORMATION RECORDED IN THE COUNTY SURVEYOR'S OFFICE FOR THIS PROJECT INCLUDE THIS RECORD OF SURVEY AND LAND CORNER RECORDS FOR CORNERS REMONUMENTED OR MAINTAINED TO CURRENT STANDARDS.

THIS PROJECT WAS CONTROLLED BY GLOBAL POSITIONING SYSTEM OBSERVATIONS AROUND THE PERIMETER OF THE PROJECT. THE GPS OBSERVATIONS WERE REDUCED TO THE NORTH AMERICAN DATUM OF 1983, HOLDING STATIONS PENDLETON AND SPARKS AS FIXED STATIONS. LATITUDE AND LONGITUDE OF CONTROL STATIONS WERE REDUCED TO STATE PLANE COORDINATES, THEN ROTATED TO GEODETIC NORTH AT STATION "COMMUNITY HOSPITAL" (THETA = 112°12'). STATION "COMMUNITY HOSPITAL" IS PART OF THE CITY OF PENDLETON CONTROL NET AND IS LOCATED IN THE N.E. 1/4 OF SECTION 15, T2N., R32E., W.M. THE BASIS OF BEARINGS FOR THIS SURVEY IS THEN "GEODETIC NORTH AT STATION COMMUNITY HOSPITAL". ROTATED STATE PLANE COORDINATES WERE THEN PROJECTED TO AN AVERAGE ELEVATION DATUM OF 1890 MSL, AND DISTANCES ON THIS SURVEY MAP ARE REPORTED ON THAT DATUM.

CONTROL TRAVERSE SEGMENTS BETWEEN GPS CONTROL POINTS WERE MEASURED WITH A SET SB AUTOMATIC TOTAL STATION, AND ADJUSTED BY LEAST SQUARES METHODS TO CLOSE ON GPS CONTROL POINTS.

GPS CONTROL WAS MEASURED WITH 9 ASHTACH I+2 DUAL FREQUENCY RECEIVERS. OBSERVED DATA WAS PROCESSED AND ADJUSTED WITH ASHTACH PRISM SOFTWARE.

HISTORY OF SURVEYS

SURVEYS IN THE TOWNSHIP BEGAN IN 1860 WITH THE SURVEY OF THE TOWNSHIP EXTERIORS. IN 1864, DANIEL CHAPLIN SUBDIVIDED THE ENTIRE TOWNSHIP. IN 1871, Z.P. MOODY ESTABLISHED THE BOUNDARIES OF THE UMATILLA RESERVATION. MOODY'S SURVEY WAS MADE INDEPENDENTLY, WITHOUT RECOVERY OF CORNERS ESTABLISHED BY DANIEL CHAPLIN. IN 1887 AND 1890, CURRIN AND NOLAND INDEPENDENTLY RESURVEYED THE RESERVATION BOUNDARY AND SECTIONS WITHIN THE RESERVATION. CURRIN AND NOLAND RECOVERED AND REMONUMENTED MANY OF MOODY'S CORNERS. CURRIN AND NOLAND ALSO SURVEYED THE DIMINISHED RESERVATION BOUNDARY. IN 1917, L.E. WILKES SURVEYED THE WEST LINE OF THE DIMINISHED RESERVATION BOUNDARY. SINCE 1917, SEVERAL RECORDED SURVEYS HAVE BEEN MADE AFFECTING PUBLIC LAND CORNERS AND APPLICABLE SURVEY RECORDS ARE NOTED ON THIS MAP.

LAND CORNER RECORD FORMS:

THE LAND CORNER RECORD FORMS, FILED SEPARATELY, CONTAIN EXPLANATIONS, HISTORIES AND METHODS OF RE-ESTABLISHMENT, REMONUMENTATION AND MAINTENANCE FOR CORNERS VISITED ON THIS SURVEY. THE LAND CORNER RECORDS SHOULD BE CONSULTED FOR SPECIFIC INFORMATION ON EACH CORNER.

REGISTERED PROFESSIONAL LAND SURVEYOR	WILLIAM R. WELLS, PLS 357 N.E. HWY. 11 P.O. BOX 1696 PENDLETON, OR 97801 PHONE: (503) 276-6362	PROJECT: PUBLIC LAND CORNER REMONUMENTATION FOR UMATILLA COUNTY SECTIONS 25 THROUGH 28, SECTIONS 33 THROUGH 36, T2N., R32E., W.M.	OREGON JULY 22, 1977 WILLIAM R. WELLS 1106 RENEWS 12/31/94
	DATE: 6/13/94 CK. BY: WRW	DR. BY: DMT NO: 94-217	

8-94
KK
94-109-C