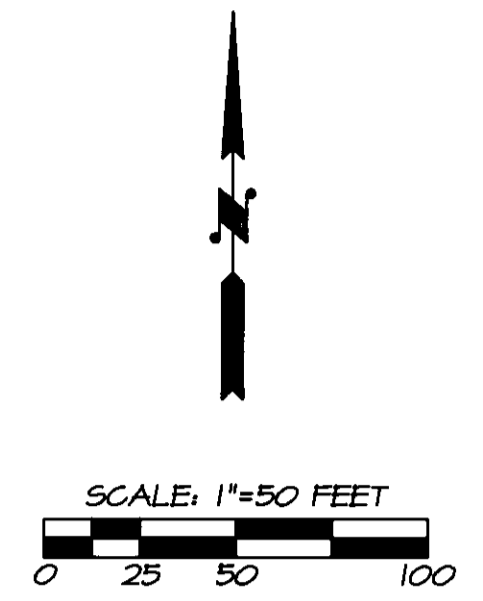


# RECORD OF SURVEY

JULY, 1996



NE CORNER 5 1/2 NW/4 NE 1/4 SEC. 16, FD. 5/8" PIN N 84°32'28" W 4.00' FROM CORNER POINT. SEE SURVEY NO. R-20-C & A-23-AX.

### LEGEND

- - FOUND MONUMENT FROM SURVEY NO. R-20-C.
- - FOUND MONUMENT AS NOTED.
- ⊕ - CALCULATED POINT ONLY, NOT SET OR FOUND.
- Ⓟ - LOT NUMBERS, RIVER HILL PHASE I PLAT.
- (XOX)R1 - RECORD BEARINGS AND DISTANCES FROM SURVEY NO. R-20-C.
- (XOX)R2 - RECORD BEARINGS AND DISTANCES FROM PLAT OF RIVER HILL PHASE I, BOOK 12, PAGE 15.
- (XOX)R3 - RECORD BEARINGS AND DISTANCES FROM REPLAT OF PORTIONS OF SUNLAND ESTATES, BOOK 13 PAGE 50.

### LINE TABLE

NO.	BEARING	DISTANCE	RECORD BEARING/DISTANCE
L1	N 33°59'39" W	24.04'	
L2	N 75°02'53" E	31.91'	
L3	N 71°16'32" E	22.06'	
L4	N 66°39'15" E	25.54'	
L5	N 51°43'04" E	70.40'	
L6	N 59°00'44" E	26.88'	(N 59°00'44" E) R2
L7	N 78°06'28" E	63.32'	(S 78°11'45" W 63.45') R2
L8	N 00°29'48" E	50.00'	(S 00°27'40" W 50.00') R2
L9	N 89°33'32" W	35.03'	(S 89°32'20" E 35.00') R2
L11	S 45°07'08" W	43.70'	(N 45°11'49" E 43.74') R1
L12	S 45°07'08" W	8.70'	(N 45°11'49" E 8.74') R1
L13	S 45°07'08" W	5.43'	(N 45°11'49" E 5.45') R1
L14	S 67°07'42" W	43.50'	(S 67°10'17" W) R1
L15	S 67°07'42" W	37.79'	(S 67°10'17" W) R1
L16	S 67°07'42" W	32.08'	(S 67°10'17" W) R1
L17	N 10°00'00" W	25.64'	
L18	N 10°00'00" W	25.64'	

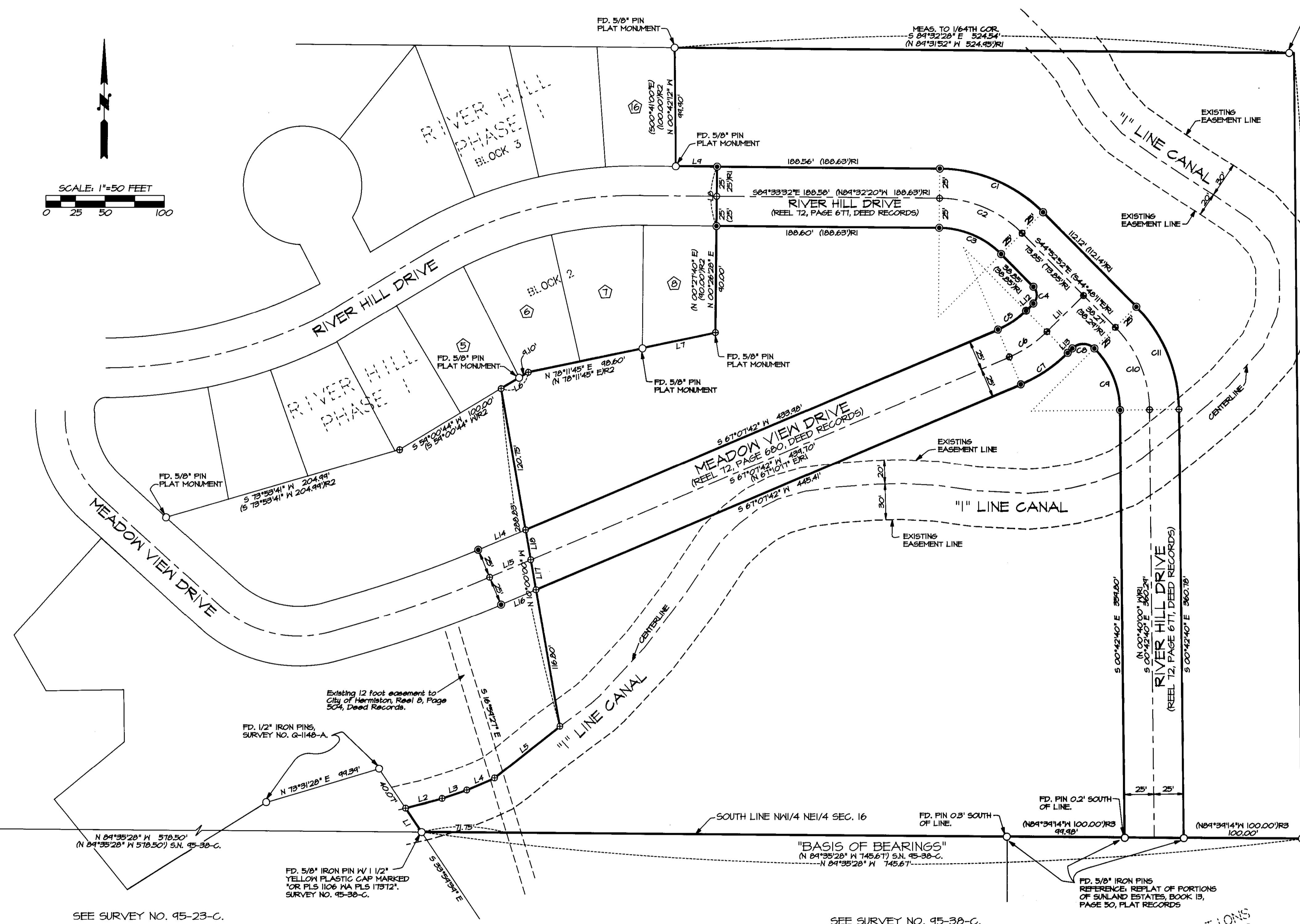
### NARRATIVE OF SURVEY

THIS SURVEY WAS MADE FOR THE PURPOSE OF LOCATING EXISTING MONUMENTS AND DEVELOPING THE BOUNDARY FOR A TRACT OF LAND TO BE PLATTED AS "RIVER HILL PHASE II", A SUBDIVISION WITHIN THE CITY OF HERMISTON. NO MONUMENTS WERE ESTABLISHED ON THIS SURVEY, THE CALCULATED POINTS REQUIRING MONUMENTATION WILL BE MARKED DURING THE PLATTING PROCESS.

THE RIGHT-OF-WAY FOR RIVER HILL DRIVE AND MEADOW VIEW DRIVE HAD BEEN PREVIOUSLY ESTABLISHED AND MONUMENTED, SEE SURVEY NO. R-20-C.

THE PROPOSED "RIVER HILL PHASE II" PLAT WILL REFER TO THIS SURVEY, ITS MEASUREMENTS, FOUND MONUMENTS AND RECORD SURVEY MAP REFERENCES.

THIS SURVEY WAS MADE WITH A 2 PERSON CREW USING A SOKKIA SET 4-B AUTOMATIC FIVE SECOND TOTAL STATION USING A COMBINATION OF CLOSED TRAVERSE AND RADIAL TIES.



### CURVE TABLE

NO.	DELTA	RADIUS	LENGTH	CHORD LENGTH	CHORD BEARING	DELTA	RADIUS	LENGTH	CH LENGTH	CH BEARING
C1	44°40'40"	125.00'	97.47'	95.02'	S67°13'12"E		125.00'	97.61'	95.14'	N67°10'15"W) R1
C2	44°40'40"	100.00'	77.98'	76.02'	S67°13'12"E	44°44'09"	100.00'	78.08'	76.11'	S67°10'15"E) R1
C3	44°40'40"	75.00'	58.48'	57.01'	S67°13'12"E		75.00'	58.56'	57.08'	S67°10'15"E) R1
C4	90°00'00"	10.00'	15.71'	14.14'	S00°07'08"W		10.00'	15.70'	14.14'	N00°11'40"E) R1
C5	22°00'35"	75.00'	28.81'	28.63'	S56°07'25"W		75.00'	28.76'	28.58'	N56°11'04"E) R1
C6	22°00'35"	100.00'	38.41'	38.18'	S56°07'25"W	21°58'28"	100.00'	38.35'	38.12'	S56°11'04"W) R1
C7	22°00'35"	125.00'	48.02'	47.72'	S56°07'25"W		125.00'	47.93'	47.64'	S56°11'04"W) R1
C8	90°00'00"	13.27'	20.84'	18.76'	S89°52'52"E		13.29'	20.88'	18.80'	N89°48'07"W) R1
C9	44°10'12"	75.00'	57.82'	56.40'	S22°47'46"E		75.00'	57.77'	56.35'	S22°44'06"E) R1
C10	44°10'12"	100.00'	77.09'	75.20'	S22°47'46"E	44°08'11"	100.00'	77.03'	75.14'	S22°44'06"E) R1
C11	44°10'12"	125.00'	96.36'	94.00'	S22°47'46"E		125.00'	96.29'	93.93'	N22°44'06"W) R1

### RECORD CURVE DATA

NO.	DELTA	RADIUS	LENGTH	CH LENGTH	CH BEARING
C1	44°40'40"	125.00'	97.61'	95.14'	N67°10'15"W) R1
C2	44°40'40"	100.00'	78.08'	76.11'	S67°10'15"E) R1
C3	44°40'40"	75.00'	58.56'	57.08'	S67°10'15"E) R1
C4	90°00'00"	10.00'	15.70'	14.14'	N00°11'40"E) R1
C5	22°00'35"	75.00'	28.76'	28.58'	N56°11'04"E) R1
C6	22°00'35"	100.00'	38.35'	38.12'	S56°11'04"W) R1
C7	22°00'35"	125.00'	47.93'	47.64'	S56°11'04"W) R1
C8	90°00'00"	13.29'	20.88'	18.80'	N89°48'07"W) R1
C9	44°10'12"	75.00'	57.77'	56.35'	S22°44'06"E) R1
C10	44°10'12"	100.00'	77.03'	75.14'	S22°44'06"E) R1
C11	44°10'12"	125.00'	96.29'	93.93'	N22°44'06"W) R1

REGISTERED PROFESSIONAL LAND SURVEYOR  
*William R. Wells*  
 OREGON  
 JULY 22, 1977  
 WILLIAM R. WELLS  
 1108  
 RENEWS 6/30/98

WILLIAM R. WELLS, PLS  
 357 N.E. HWY. 11  
 P.O. BOX 1696  
 PENDELTON, OR 97801  
 PHONE: (541) 276-6362

RECEIVED BY  
 Hermiston County Surveyor  
 Date: 8/30/96  
 Initials: J.D. Roberts  
 No. 96-185-C

PROJECT:  
 RECORD OF SURVEY OF  
 BOUNDARY OF PROPOSED  
 "RIVER HILL PHASE II"  
 FOR:  
 PAUL F. DIXON

LOCATED IN THE NORTHEAST QUARTER  
 OF SECTION 16, TOWNSHIP 4 NORTH,  
 RANGE 28 EAST, 11M, CITY OF  
 HERMISTON, UMATILLA COUNTY, OREGON.

REPLAT OF PORTIONS  
 OF SUNLAND ESTATES

SUNLAND ESTATES

SEE SURVEY NO. 45-23-C.

SEE SURVEY NO. 45-38-C.

SW CORNER NW/4 NE/4  
 FD. 2 1/2" BRASS CAP SET  
 BY PLS 938.

Existing 12 foot easement to  
 City of Hermiston, Reel 9, Page  
 504, Deed Records.

FD. 5/8" IRON PIN W/ 1/2"  
 YELLOW PLASTIC CAP MARKED  
 FOR PLS 1106 MA PLS 17512.  
 SURVEY NO. 45-38-C.

"BASIS OF BEARINGS"  
 N 84°35'28" W 145.61' S14 45-38-C.  
 N 84°35'28" W 745.61'

FD. PIN 0.2" SOUTH  
 OF LINE.

FD. PIN 0.3" SOUTH  
 OF LINE.

FD. 5/8" IRON PINS  
 REFERENCE: REPLAT OF PORTIONS  
 OF SUNLAND ESTATES, BOOK 13,  
 PAGE 50, PLAT RECORDS

S 1/4 CORNER SEC. 16,  
 FD. 2 1/2" BRASS PER  
 SURVEY NO. 5-156-C.