

CALCULATED POSITION FOR THE N.W. CORNER OF THE S.E. 1/4 OF SECTION 22.

LEGEND

- FENCE LINE
- PARCEL BOUNDARY
- RIGHT OF WAY CENTERLINE
- RIGHT OF WAY BOUNDARY
- SECTION SUBDIVISION LINE
- CURVE RADIUS
- FOUND SURVEY MONUMENT AS DESCRIBED
- CALCULATED POINT, NOT FOUND OR SET
- SET 5/8" X 30" REBAR WITH PLASTIC YELLOW CAP STAMPED "TOMKINS SURVEYING"
- RECORD DIMENSION, AS NOTED.
- G.L.O. SURVEY DIMENSION

NARRATIVE

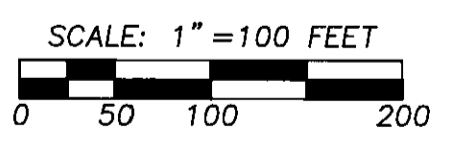
THIS SURVEY WAS PERFORMED AT THE REQUEST OF PETE EARLY TO ADJUST PREVIOUSLY EXISTING PARCEL BOUNDARIES AND TO DETERMINE THE BOUNDARY OF HIS ENTIRE PROPERTY.

AS IS SHOWN HEREIN, EXTENSIVE EFFORT WAS UNDERTAKEN IN THE COURSE OF THIS SURVEY TO LOCATE THE SOUTHEAST AND NORTHEAST CORNERS OF THE SOUTHEAST 1/4 OF THE SOUTHEAST 1/4 OF SECTION 22, THOUGH SERIOUS DISCREPANCIES EXIST IN THIS SECTION BETWEEN THE MEASURED DIMENSIONS AND THOSE OF THE ORIGINAL G.L.O. SURVEY, AGREEMENT WITH THE LOCAL IMPROVEMENTS AND WITH PRIOR SURVEYS WAS MAINTAINED.

THIS SURVEY WAS PERFORMED BOTH AS A REAL TIME KINEMATIC SURVEY, USING TRIMBLE 4400 G.P.S. RECEIVERS, AND AS A CONVENTIONAL FIELD TRAVERSE, USING A SOKKIA AUTOMATIC TOTAL STATION WITH STANDARD ERRORS OF 3 MILLIMETERS + 2 PPM AND 0"00"02", IN AREAS WHERE GROUND COVER PRECLUDED THE USAGE OF THE G.P.S. RECEIVERS. MONUMENTS SHOWN WERE VISITED IN SEPTEMBER, 1997.

S 01° 51' 25" E 1426.60'

CALCULATED POSITION FOR S.E. CORNER OF S.W. 1/4, S.E. 1/4, SEC. 22.



LEGAL DESCRIPTION
REVISED TAX LOT 1502

A parcel of land located in the Southeast 1/4 of the Southeast 1/4 of Section 22 in Township 5 North of Range 36 East of the Willamette Meridian, Umatilla County, Oregon, being described more particularly as follows:

Commencing at the Southeast corner of said Southeast 1/4 of the Southeast 1/4 of Section 22;

THENCE North 01 degrees 19 minutes 00 seconds West for a distance of 167.00 feet, along the East line of said Southeast 1/4 of the Southeast 1/4 of the True Point of Beginning for this Legal Description;

THENCE North 01 degrees 18 minutes 59 seconds West for a distance of 258.80 feet, continuing along said East line;

THENCE South 88 degrees 41 minutes 00 seconds West for a distance of 16.67 feet, departing said East line;

THENCE South 31 degrees 00 minutes 31 seconds West for a distance of 170.91 feet;

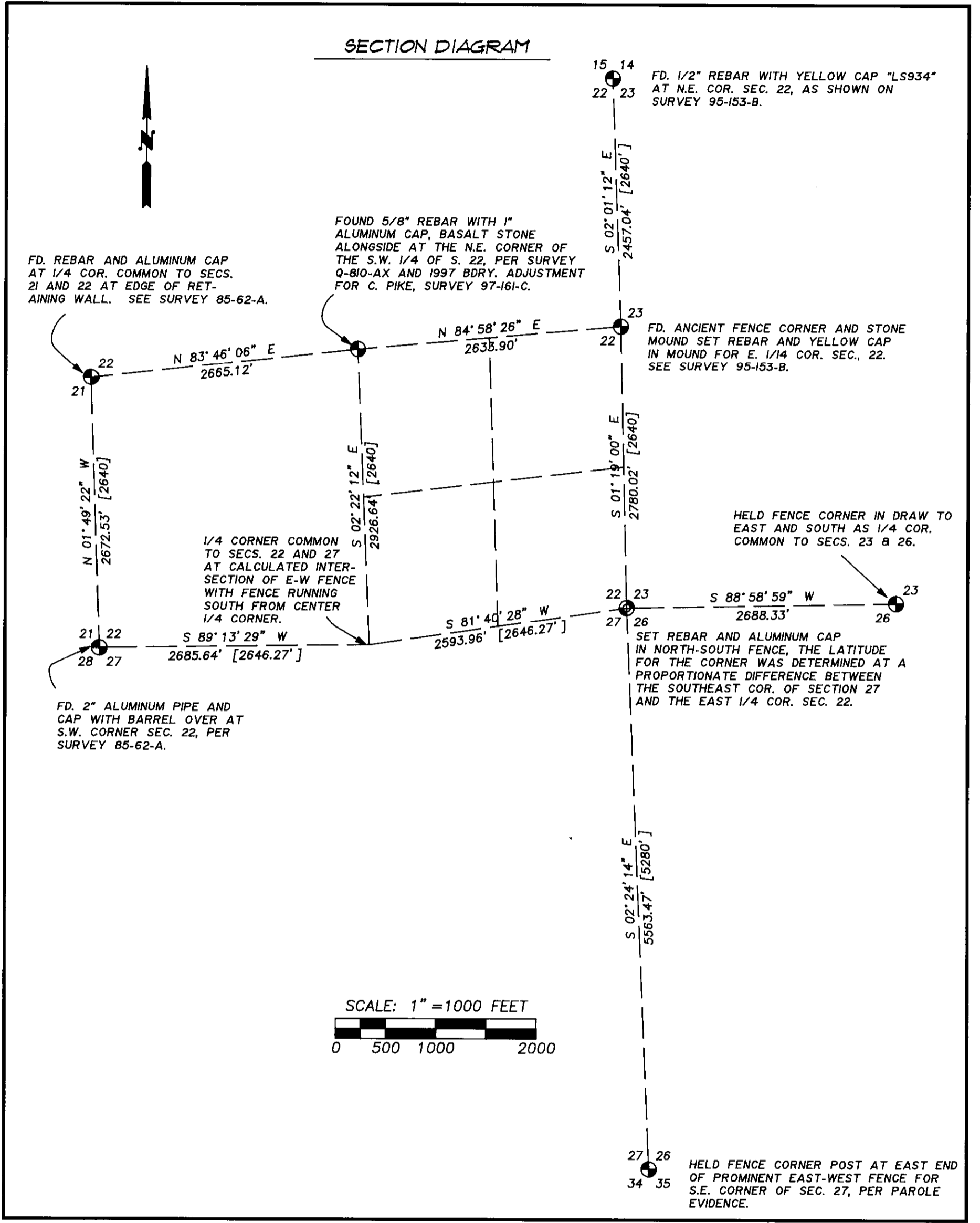
THENCE North 67 degrees 57 minutes 19 seconds West for a distance of 135.41 feet;

THENCE South 61 degrees 23 minutes 23 seconds West for a distance of 76.93 feet;

THENCE South 25 degrees 23 minutes 28 seconds East for a distance of 130.70 feet;

THENCE South 88 degrees 12 minutes 08 seconds East for a distance of 247.79 feet to the True Point of Beginning.

Said property contains 1.002 acres more or less.



LINE TABLE

NO.	BEARING	DISTANCE
L1	N 25° 23' 28" W	130.70'
L2	N 61° 23' 34" E	76.93'
L3	S 67° 57' 19" E	135.41'
L4	N 88° 41' 00" E	16.67'
L5	S 55° 22' 53" E	22.52'
L6	S 01° 19' 00" W	104.66'
L7	N 46° 58' 45" W	80.90'

REFERENCE MATERIAL

- DEEDS:
REEL 254, PAGE 529
BOOK 235, PAGE 170
- SURVEYS:
95-153-B
97-161-C
0-810-AX
85-62-A
82-07-A

LEGAL DESCRIPTION
REVISED TAX LOT 1500

A parcel of land located in the Southeast 1/4 of the Southeast 1/4 of Section 22 and the Northeast 1/4 of the Northeast 1/4 of Section 27, all in Township 5 North and Range 36 East of the Willamette Meridian, Umatilla County, Oregon, being described more particularly as follows:

Commencing at the Southeast corner of the Southeast 1/4 of the Southeast 1/4 of Section 22;

THENCE North 01 degrees 19 minutes 00 seconds West for a distance of 1390.01 feet along the East line of said Southeast 1/4 of the Southeast 1/4 of the Northeast corner thereof;

THENCE South 83 degrees 20 minutes 12 seconds West for a distance of 440.00 feet along the North line of said Southeast 1/4 of the Southeast 1/4 of the True Point of Beginning;

THENCE South 83 degrees 20 minutes 12 seconds West for a distance of 316.42 feet, continuing along said North line to a point 550.00 feet Easterly of, when measured along said North line, from the Northwest corner of said Southeast 1/4 of the Southeast 1/4;

THENCE South 03 degrees 45 minutes 57 seconds West for a distance of 1103.00 feet to a point 440.00 Easterly of, when measured at right angles from, the West line of said Southeast 1/4 of the southeast 1/4;

THENCE South 01 degrees 51 minutes 25 seconds East for a distance of 331.49 feet, parallel to said West line, to a point on the bluff on the South side of the Walla Walla river; thence along said bluff by the following courses:

THENCE South 55 degrees 23 minutes 53 seconds East for a distance of 22.52 feet;

THENCE South 25 degrees 56 minutes 51 seconds East for a distance of 189.46 feet;

THENCE South 60 degrees 32 minutes 32 seconds East for a distance of 256.92 feet;

THENCE South 57 degrees 40 minutes 37 seconds East for a distance of 488.30 feet;

THENCE South 54 degrees 52 minutes 12 seconds East for a distance of 172.10 feet, to a point on the East line of the Northeast 1/4 of the Northeast 1/4 of said Section 27;

THENCE North 02 degrees 24 minutes 14 seconds West for a distance of 800.39 feet, along said East line, to the Northeast corner of the Northeast 1/4 of the Northeast 1/4 of Section 27;

THENCE North 01 degrees 19 minutes 00 seconds West for a distance of 167.00 feet, along the East line of the Southeast 1/4 of the Southeast 1/4 of Section 22;

THENCE North 88 degrees 12 minutes 08 seconds West for a distance of 247.79 feet, departing said East line;

THENCE North 25 degrees 23 minutes 28 seconds West for a distance of 130.70 feet;

THENCE North 61 degrees 23 minutes 34 seconds East for a distance of 76.93 feet;

THENCE North 67 degrees 57 minutes 19 seconds East for a distance of 135.41 feet;

THENCE North 31 degrees 00 minutes 31 seconds East for a distance of 170.91 feet;

THENCE North 88 degrees 41 minutes 00 seconds East for a distance of 16.67 feet, to a point on the East line of said Southeast 1/4 of the Southeast 1/4 of Section 22;

THENCE North 01 degrees 19 minutes 00 seconds West for a distance of 332.13 feet, along said East line, to a point on the North right of way line of County Road no. 503;

THENCE North 50 degrees 16 minutes 41 seconds West for a distance of 104.65 feet, along said North right of way line;

THENCE along a curve to the right having a radius of 2863.25 feet and an arc length of 164.84 feet, being subtended by a chord of North 48 degrees 37 minutes 42 seconds West for a distance of 164.82 feet, along said North right of way line;

THENCE North 46 degrees 58 minutes 43 seconds West for a distance of 80.90 feet, along said North right of way line;

THENCE along a curve to the left having a radius of 627.51 feet and an arc length of 219.24 feet, being subtended by a chord

of North 56 degrees 59 minutes 18 seconds West for a distance of 218.13 feet, along said North right of way line to a point in a line parallel to and 550.00 feet West of, when measured along the North line of the Southeast 1/4 of the Southeast 1/4 of Section 22 from the Northeast corner of said Southeast 1/4 of the Southeast 1/4;

THENCE North 01 degrees 19 minutes 00 seconds West for a distance of 231.06 feet, along said parallel line to the True Point of Beginning.

Excepting therefrom, however, that portion lying within the County Road right of way.

Said property contains 29.724 acres more or less, less the amount lying within the County Road.

A SURVEY FOR A BOUNDARY ADJUSTMENT, LOCATED IN THE SOUTHEAST 1/4 OF THE SOUTHEAST 1/4 OF SECTION 22, AND THE NORTHEAST 1/4 OF THE NORTHEAST 1/4 OF SECTION 27, TOWNSHIP 5 NORTH, RANGE 36 EAST, W.M., UMATILLA COUNTY, OREGON.

SCALE	1" = 100'
HOR. VERT.	
DATE	
SEPT., 1997	

TOMKINS LAND SURVEYING, INC.
20 EAST POPLAR ST. SUITE 204 WALLA WALLA, WA. 99362
FOR: PETE EARLY RT. ONE BOX 78 MILTON FREEWATER, OR

EARLYLDWG
SHEET OF

REGISTERED PROFESSIONAL LAND SURVEYOR

OREGON
JULY 26, 1988
PAUL W.P. TOMKINS
2380

RENEWS 6/30/98
11/197

REC'D B*
Umatilla County Surveyor
Date: 11-97
Rec'd: [Signature]
No. 92-214-0