

RECORD OF SURVEY

SHEET 1 OF 2

NARRATIVE:

THE PURPOSE OF THIS SURVEY WAS TO RECOVER OR REESTABLISH CERTAIN SECTION AND ONE-QUARTER SECTION CORNERS IN SECTIONS 1 THROUGH 18, T2N., R31E., W.M., AND SECTIONS 19 THROUGH 36, T3N., R31E., W.M. THE WORK WAS AUTHORIZED BY THE UMATILLA COUNTY SURVEYOR AND BOARD OF COUNTY COMMISSIONERS AND FUNDED BY THE PUBLIC LAND CORNER MONUMENT FUND.

ORIGINAL GLO SURVEYS IN THE PROJECT AREA WERE MADE BETWEEN 1859 AND 1862. INSTRUCTIONS GIVEN TO THE DEPUTY SURVEYORS BY THE SURVEYOR GENERAL DISCOURAGED USING STONES FOR CORNER MONUMENTS UNLESS BEARING TREES EXISTED. THEREFORE, NEARLY ALL CORNERS WERE ESTABLISHED AS WOOD POSTS, WITH CHARRED STAKES, TRENCHES ETC.. LATER RETRACEMENT AND REESTABLISHMENT SURVEYS MADE BY EARLY COUNTY SURVEYORS USED STONES TO MARK CORNERS WHEN AVAILABLE. IN FARMED AREAS, MOST FENCES HAVE BEEN REMOVED, BUT EVIDENCE OF OLD FENCES, SUCH AS FIELD BERMS OR FIELD LINES, STILL EXIST, AND WERE UTILIZED TO THE EXTENT POSSIBLE IN REESTABLISHING CORNER POINTS ON THIS SURVEY.

IN MAKING THIS SURVEY WE UTILIZED UMATILLA COUNTY'S RECTIFIED COLOR IMAGERY, ON THE OREGON STATE PLANE COORDINATE SYSTEM, TO IDENTIFY POTENTIAL CORNER SEARCH AREAS BASED ON FIELD LINES, ROADS, FENCES, ETC.. DETAILED SEARCH AREAS WERE IDENTIFIED USING A TRIMBLE PATHFINDER PRO-XR BEACON CORRECTED G.P.S. RECEIVER. WE CONSULTED ALL OLD COUNTY ROAD NOTES IN THE AREA FOR REFERENCES TO ORIGINAL CORNERS. WE ALSO CONSIDERED CORNER REFERENCES ON RAILROAD RIGHT-OF-WAY AND TRACK MAPS, OREGON STATE HIGHWAY DEPARTMENT MAPS FOR THE FREEWAY AND BONNEVILLE POWER ADMINISTRATION MAPS FOR THE PENDLETON-MONARY TRANSMISSION LINE SOUTH OF THE UMATILLA RIVER.

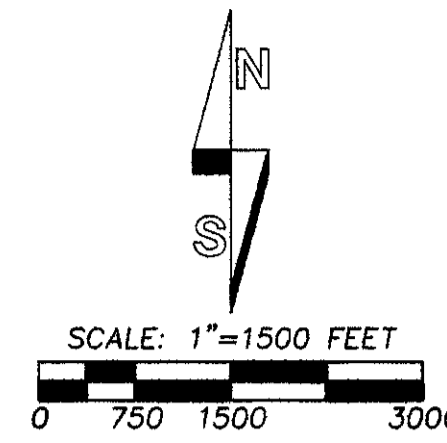
NARRATIVE, CONTINUED:

ALL RECORD SURVEYS FOUND IN COUNTY SURVEYOR OFFICE RECORDS, INCLUDING SURVEYS REPORTED IN RECORD OF PRIVATE SURVEYS, BOOKS 1 AND 2 WERE CONSULTED. WE ALSO UTILIZED 1956 (AND LATER), AERIAL PHOTOGRAPHY FLOWN BY THE USDA FARM SERVICE AGENCY. LAND CORNER RECORD FORMS, FILED CONCURRENTLY WITH THIS SURVEY, SHOULD BE CONSULTED FOR INFORMATION ON EACH CORNER RECOVERED OR REESTABLISHED. ON THE RECORD OF SURVEY MAPS AND LAND CORNER RECORDS, WE REPORTED ONLY THOSE RECORDS PERTINENT TO RECOVERY OR REESTABLISHMENT OF THE CORNERS.

IN FARMED AREAS, WE BURIED MOST CORNER MONUMENTS BELOW THE SURFACE OF THE GROUND, TO AVOID DESTRUCTION. ON CORNERS BETWEEN OWNERSHIPS IN FARMED AREAS, WE PLACED A STEEL FENCE POST NEAR THE BURIED CORNER, ABOVE GROUND, WITH WITNESS SIGN ATTACHED. SEE LAND CORNER RECORD FORMS FOR SPECIFIC LOCATIONS OF CORNER ACCESSORIES.

THE ADJUSTED CONTROL NETWORK FOR THIS SURVEY IS TIED TO THE LEAST SQUARES ADJUSTED CONTROL NETWORK MADE IN 1986 FOR THE CITY OF PENDLETON TOPOGRAPHIC MAPPING PROJECT. IN THAT CITY CONTROL NETWORK, TRIANGULATION STATIONS "PENDLETON, PID RB1366", "SPARKS, PID RB1372" AND "PENDAIR, PID RB1369" WERE HELD AS FIXED. COORDINATE VALUES REPORTED ON LAND CORNER RECORD FORMS ARE OREGON STATE PLANE COORDINATES, NORTH ZONE, NAD 83(91).

RECOVERED CORNERS AND CONTROLLING CORNERS WERE TIED WITH TRIMBLE 5700 GEODETIC G.P.S. RECEIVERS USING STATIC AND REAL TIME KINEMATIC METHODS, FROM ADJUSTED G.P.S. CONTROL POINTS ESTABLISHED FOR THIS SURVEY. REESTABLISHED CORNER POSITIONS WERE SET USING REAL TIME KINEMATIC METHODS AND VERIFIED BY SEPARATE OBSERVATIONS. SOME CORNER AREAS WERE OBSTRUCTED BY CANYONS OR VEGETATION. CORNERS IN THESE AREAS WERE SET OR TIED USING A SOKKIA SET 45, FIVE SECOND TOTAL STATION OR LETZ SET 3B THREE SECOND TOTAL STATION, BY MAKING SHORT MEASUREMENTS FROM CONTROL POINTS ESTABLISHED BY G.P.S. METHODS. CORNER ACCESSORIES WERE MEASURED WITH A STEEL TAPE AND COMPASS.



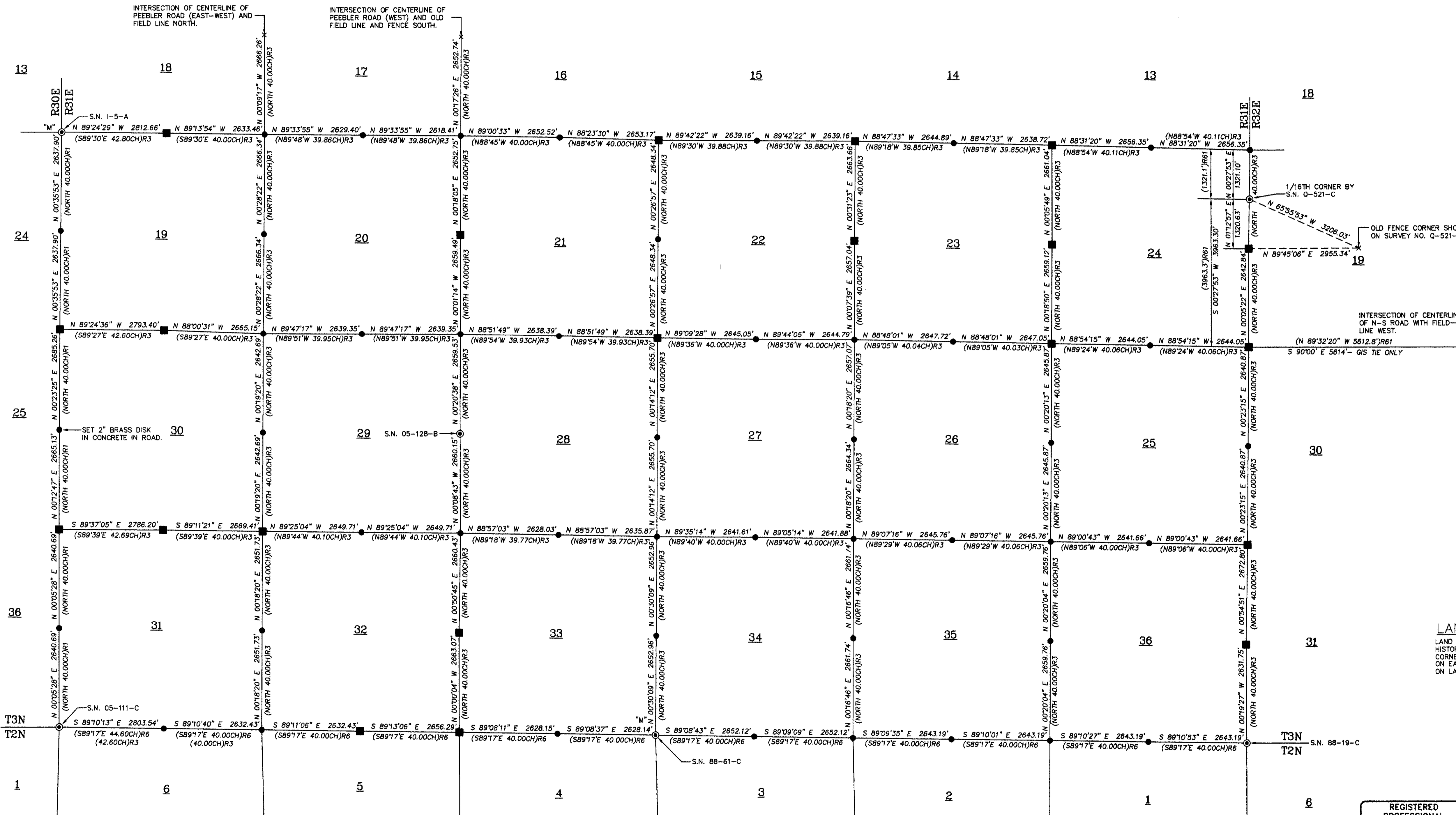
"BASIS OF BEARINGS" AND SCALE/ELEVATION FACTORS:
MAP BEARINGS ARE ROTATED TO THE THETA ANGLE OF +01°06'39.60" AT THE BRASS CAP MONUMENTING THE SOUTHWEST CORNER OF SECTION 34, T3N., R31E., W.M.
THE COMBINED SCALE AND ELEVATION FACTOR FOR CONVERTING MAP DISTANCES TO STATE PLANE GRID DISTANCES IS 0.998958440.

LEGEND

- - REESTABLISHED CORNER AND MONUMENTED WITH A 2 3/8" BRASS CAP ON 1 1/4" BY 30" GALVANIZED IRON PIPE, UNLESS OTHERWISE NOTED. SEE CORNER RECORD FILED CONCURRENTLY WITH THIS SURVEY.
- - FOUND AND ACCEPTED EVIDENCE OF CORNER AND REMONUMENTED WITH A 2 3/8" BRASS CAP ON 1 1/4" BY 30" GALVANIZED IRON PIPE UNLESS OTHERWISE NOTED. SEE CORNER RECORD FILED CONCURRENTLY WITH THIS SURVEY.
- ⊙ - FOUND EXISTING CORNER MONUMENT, A 2 3/8" BRASS CAP ON 1 1/4" GALVANIZED IRON PIPE UNLESS OTHERWISE NOTED.
- "M" - INDICATES EXISTING CORNER MONUMENT MAINTAINED ON THIS SURVEY. SEE CORNER RECORD FILED CONCURRENTLY WITH THIS SURVEY.
- S.N. - INDICATES SURVEY NUMBER OF SURVEY RECORDED AT UMATILLA COUNTY SURVEYORS OFFICE.
- C.R. - INDICATES CORNER RECORD NUMBER RECORDED AT UMATILLA COUNTY SURVEYORS OFFICE.
- R.P.S. - INDICATES "RECORD OF PRIVATE SURVEY" BOOK, FOUND IN COUNTY SURVEYORS OFFICE.
- (XOX)R1 - RECORD DIMENSION FROM ORIGINAL GLO SURVEY BY DAVID P. THOMPSON, UNDER CONTRACT NO. 81, DATED JULY 8, 1859.
- (XOX)R3 - RECORD DIMENSION FROM ORIGINAL GLO SURVEY BY D.S. PAYNE, UNDER CONTRACT NO. 100, DATED AUGUST 1, 1861.
- (XOX)R8 - RECORD DIMENSION FROM ORIGINAL GLO SURVEY BY JOSIAH A. BURNETT, UNDER CONTRACT NO. 92, DATED SEPTEMBER 12, 1860.
- (XOX)R10 - RECORD DIMENSION FROM R.P.S. BOOK 1, PAGE 550, SURVEY NO. 197.
- (XOX)R11 - RECORD DIMENSION FROM R.P.S. BOOK 1, PAGE 344, SURVEY NO. 87.
- (XOX)R12 - RECORD DIMENSION FROM R.P.S. BOOK 1, PAGE 348, SURVEY NO. 92.
- (XOX)R13 - RECORD DIMENSION FROM R.P.S. BOOK 1, PAGE 359, SURVEY NO. 93.
- (XOX)R14 - RECORD DIMENSION FROM R.P.S. BOOK 1, PAGE 484, SURVEY NO. 151.
- (XOX)R15 - RECORD DIMENSION FROM R.P.S. BOOK 1, PAGE 485, SURVEY NO. 152.
- (XOX)R16 - RECORD DIMENSION FROM R.P.S. BOOK 1, PAGE 424, SURVEY NO. 117.
- (XOX)R18 - RECORD DIMENSION FROM R.P.S. BOOK 1, PAGE 517, SURVEY NO. 174.
- (XOX)R19 - RECORD DIMENSION FROM R.P.S. BOOK 1, PAGE 571, SURVEY NO. 210.
- (XOX)R20 - RECORD DIMENSION FROM R.P.S. BOOK 2, PAGE 575, SURVEY NO. 213.
- (XOX)R21 - RECORD DIMENSION FROM R.P.S. BOOK 2, PAGE 270-271, SURVEY NO. 405.
- (XOX)R25 - RECORD DIMENSION FROM R.P.S. BOOK 1, PAGE 480, SURVEY NO. 147.
- (XOX)R26 - RECORD DIMENSION FROM R.P.S. BOOK 1, PAGE 574, SURVEY NO. 212.
- (XOX)R27 - RECORD DIMENSION FROM R.P.S. BOOK 1, PAGE 203, SURVEY NO. 38.
- (XOX)R29 - RECORD DIMENSION FROM SURVEY NO. Q-78-B, SURVEY RECORDS.
- (XOX)R30 - RECORD DIMENSION FROM SURVEY NO. 03-293-B, SURVEY RECORDS.
- (XOX)R32 - RECORD DIMENSION FROM SURVEY NO. 98-36-B, SURVEY RECORDS.
- (XOX)R33 - RECORD DIMENSION FROM SURVEY NO. D-39-B, SURVEY RECORDS.
- (XOX)R37 - RECORD DIMENSION FROM SURVEY NO. 00-253-B, SURVEY RECORDS.
- (XOX)R40 - RECORD DIMENSION FROM SURVEY NO. 98-121-B, SURVEY RECORDS.
- (XOX)R41 - RECORD DIMENSION FROM SURVEY NO. 05-111-C, SURVEY RECORDS.
- (XOX)R43 - RECORD DIMENSION FROM SURVEY NO. P-89-B, SURVEY RECORDS.
- (XOX)R50 - RECORD DIMENSION FROM SURVEY NO. 90-50-C, SURVEY RECORDS.
- (XOX)R51 - RECORD DIMENSION FROM SURVEY NO. 88-19-C, SURVEY RECORDS.
- (XOX)R61 - RECORD DIMENSION FROM SURVEY NO. Q-521-C, SURVEY RECORDS.
- (XOX)R63 - RECORD DIMENSION FROM R.P.S. BOOK 2 PAGE 258, SURVEY NO. 393.
- (XOX)R64 - RECORD DIMENSION FROM R.P.S. BOOK 1 PAGE 319, SURVEY NO. 74.
- (XOX)R65 - RECORD DIMENSION FROM R.P.S. BOOK 1 PAGE 556, SURVEY NO. 201.

LAND CORNER RECORD FORMS

LAND CORNER RECORD FORMS FILED CONCURRENTLY WITH THIS SURVEY CONTAIN EXPLANATIONS, HISTORIES AND METHODS OF RE-ESTABLISHMENT, REMONUMENTATION AND MAINTENANCE FOR CORNERS VISITED ON THIS SURVEY. CONSULT LAND CORNER RECORDS FOR SPECIFIC INFORMATION ON EACH CORNER. OREGON STATE PLANE COORDINATES, NORTH ZONE, NAD 83(91), ARE REPORTED ON LAND CORNER RECORD FORMS.



SEE SHEET 2 OF 2 FOR PORTION OF SURVEY IN T2N., R31E., W.M.

REGISTERED
PROFESSIONAL
LAND SURVEYOR

Will R. Wells

OREGON
JULY 22, 1977
WILLIAM R. WELLS
1108
RENEWS 6/30/08

WILLIAM R. WELLS, PLS
2602 N.E. RIVERSIDE PLACE
P.O. BOX 1696
PENDLETON, OREGON
PHONE: (541) 276-6362

DATE: 4/06 DR. BY: DMT
CK. BY: [Signature] NO: 06-1067

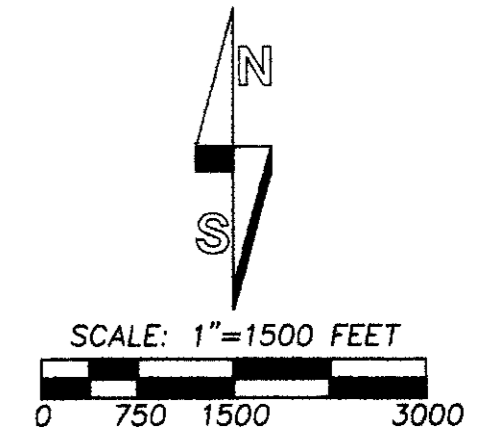
PROJECT:
SURVEY FOR:
UMATILLA COUNTY

LOCATED IN SECTIONS 1 THROUGH 18,
TOWNSHIP 2 NORTH, RANGE 31 EAST, W.M.
AND SECTIONS 19 THROUGH 36, TOWNSHIP
3 NORTH, RANGE 31 EAST, W.M.,
UMATILLA COUNTY, OREGON.

Umatilla County Surveyor
Date: 7-06
Revised: [Signature]
File: 06-462-C

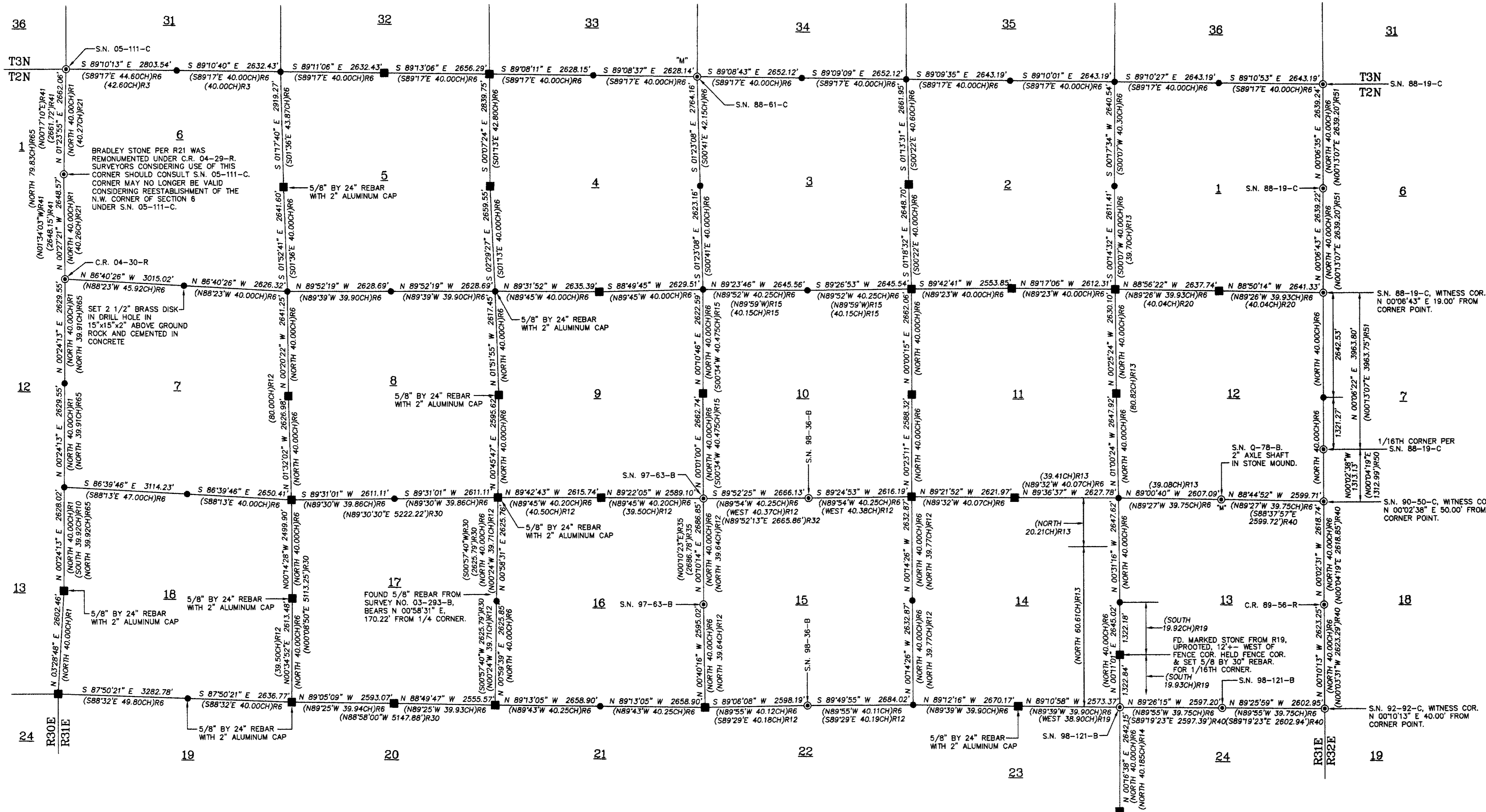
RECORD OF SURVEY

SHEET 2 OF 2



"BASIS OF BEARINGS" AND SCALE/ELEVATION FACTORS:
 MAP BEARINGS ARE ROTATED TO THE THETA ANGLE OF +0106'39.60" AT
 THE BRASS CAP MONUMENTING THE SOUTHWEST CORNER OF SECTION 34,
 T3N., R31E., W.M..
 THE COMBINED SCALE AND ELEVATION FACTOR FOR CONVERTING MAP
 DISTANCES TO STATE PLANE GRID DISTANCES IS 0.999858440.

SEE SHEET 1 OF 2 FOR PORTION OF SURVEY IN T3N., R31E., W.M.



- LEGEND**
- - REESTABLISHED CORNER AND MONUMENTED WITH A 2 3/8" BRASS CAP ON 1 1/4" BY 30" GALVANIZED IRON PIPE, UNLESS OTHERWISE NOTED. SEE CORNER RECORD FILED CONCURRENTLY WITH THIS SURVEY.
 - - FOUND AND ACCEPTED EVIDENCE OF CORNER AND REMONUMENTED WITH A 2 3/8" BRASS CAP ON 1 1/4" BY 30" GALVANIZED IRON PIPE UNLESS OTHERWISE NOTED. SEE CORNER RECORD FILED CONCURRENTLY WITH THIS SURVEY.
 - ⊙ - FOUND EXISTING CORNER MONUMENT, A 2 3/8" BRASS CAP ON 1 1/4" GALVANIZED IRON PIPE UNLESS OTHERWISE NOTED.
 - "M" - INDICATES EXISTING CORNER MONUMENT MAINTAINED ON THIS SURVEY. SEE CORNER RECORD FILED CONCURRENTLY WITH THIS SURVEY.
 - S.N. - INDICATES SURVEY NUMBER RECORDED AT UMATILLA COUNTY SURVEYORS OFFICE.
 - C.R. - INDICATES CORNER RECORD NUMBER RECORDED AT UMATILLA COUNTY SURVEYORS OFFICE.
 - R.P.S. - INDICATES "RECORD OF PRIVATE SURVEY" BOOK, FOUND IN COUNTY SURVEYORS OFFICE.
 - (XOX)R1 - RECORD DIMENSION FROM ORIGINAL GLO SURVEY BY DAVID P. THOMPSON, UNDER CONTRACT NO. 81, DATED JULY 8, 1859.
 - (XOX)R3 - RECORD DIMENSION FROM ORIGINAL GLO SURVEY BY D.S. PAYNE, UNDER CONTRACT NO. 100, DATED AUGUST 1, 1861.
 - (XOX)R6 - RECORD DIMENSION FROM ORIGINAL GLO SURVEY BY JOSIAH A. BURNETT, UNDER CONTRACT NO. 92, DATED SEPTEMBER 12, 1860.
 - (XOX)R10 - RECORD DIMENSION FROM R.P.S. BOOK 1, PAGE 550, SURVEY NO. 197.
 - (XOX)R11 - RECORD DIMENSION FROM R.P.S. BOOK 1, PAGE 344, SURVEY NO. 87.
 - (XOX)R12 - RECORD DIMENSION FROM R.P.S. BOOK 1, PAGE 348, SURVEY NO. 92.
 - (XOX)R13 - RECORD DIMENSION FROM R.P.S. BOOK 1, PAGE 359, SURVEY NO. 93.
 - (XOX)R14 - RECORD DIMENSION FROM R.P.S. BOOK 1, PAGE 484, SURVEY NO. 151.
 - (XOX)R15 - RECORD DIMENSION FROM R.P.S. BOOK 1, PAGE 485, SURVEY NO. 152.
 - (XOX)R16 - RECORD DIMENSION FROM R.P.S. BOOK 1, PAGE 424, SURVEY NO. 117.
 - (XOX)R18 - RECORD DIMENSION FROM R.P.S. BOOK 1, PAGE 517, SURVEY NO. 174.
 - (XOX)R19 - RECORD DIMENSION FROM R.P.S. BOOK 1, PAGE 571, SURVEY NO. 210.
 - (XOX)R20 - RECORD DIMENSION FROM R.P.S. BOOK 1, PAGE 575, SURVEY NO. 213.
 - (XOX)R21 - RECORD DIMENSION FROM R.P.S. BOOK 2, PAGE 270-271, SURVEY NO. 405.
 - (XOX)R25 - RECORD DIMENSION FROM R.P.S. BOOK 1, PAGE 480, SURVEY NO. 147.
 - (XOX)R26 - RECORD DIMENSION FROM R.P.S. BOOK 1, PAGE 574, SURVEY NO. 212.
 - (XOX)R27 - RECORD DIMENSION FROM R.P.S. BOOK 1, PAGE 203, SURVEY NO. 38.
 - (XOX)R29 - RECORD DIMENSION FROM SURVEY NO. Q-78-B, SURVEY RECORDS.
 - (XOX)R30 - RECORD DIMENSION FROM SURVEY NO. 03-293-B, SURVEY RECORDS.
 - (XOX)R32 - RECORD DIMENSION FROM SURVEY NO. 98-36-B, SURVEY RECORDS.
 - (XOX)R33 - RECORD DIMENSION FROM SURVEY NO. D-39-B, SURVEY RECORDS.
 - (XOX)R37 - RECORD DIMENSION FROM SURVEY NO. 00-253-B, SURVEY RECORDS.
 - (XOX)R40 - RECORD DIMENSION FROM SURVEY NO. 98-121-B, SURVEY RECORDS.
 - (XOX)R41 - RECORD DIMENSION FROM SURVEY NO. 05-111-C, SURVEY RECORDS.
 - (XOX)R43 - RECORD DIMENSION FROM SURVEY NO. P-89-B, SURVEY RECORDS.
 - (XOX)R50 - RECORD DIMENSION FROM SURVEY NO. 90-50-C, SURVEY RECORDS.
 - (XOX)R51 - RECORD DIMENSION FROM SURVEY NO. 88-19-C, SURVEY RECORDS.
 - (XOX)R61 - RECORD DIMENSION FROM SURVEY NO. Q-521-C, SURVEY RECORDS.
 - (XOX)R63 - RECORD DIMENSION FROM R.P.S. BOOK 2 PAGE 258, SURVEY NO. 393.
 - (XOX)R64 - RECORD DIMENSION FROM R.P.S. BOOK 1 PAGE 319, SURVEY NO. 74.
 - (XOX)R65 - RECORD DIMENSION FROM R.P.S. BOOK 1 PAGE 556, SURVEY NO. 201.

| | | |
|---|---|---|
| REGISTERED PROFESSIONAL LAND SURVEYOR <i>William R. Wells</i> OREGON JULY 22, 1977 WILLIAM R. WELLS 1108 RENEWS 6/30/08 | WILLIAM R. WELLS, PLS 2602 N.E. RIVERSIDE PLACE P.O. BOX 1696 PENDLETON, OREGON PHONE: (541) 276-6362 | PROJECT: 106GNDFINAL52 SURVEY FOR: UMATILLA COUNTY LOCATED IN SECTIONS 1 THROUGH 16, TOWNSHIP 2 NORTH, RANGE 31 EAST, W.M. AND SECTIONS 19 THROUGH 36, TOWNSHIP 3 NORTH, RANGE 31 EAST, W.M., UMATILLA COUNTY, OREGON. |
| | DATE: 4/06 DR. BY: DMT CK BY: WRW NO: 06-1067 REC BY: JBY | |

Umatilla County Surveyors
 Date: 4/06
 By: [Signature]
 No. 06-962-C