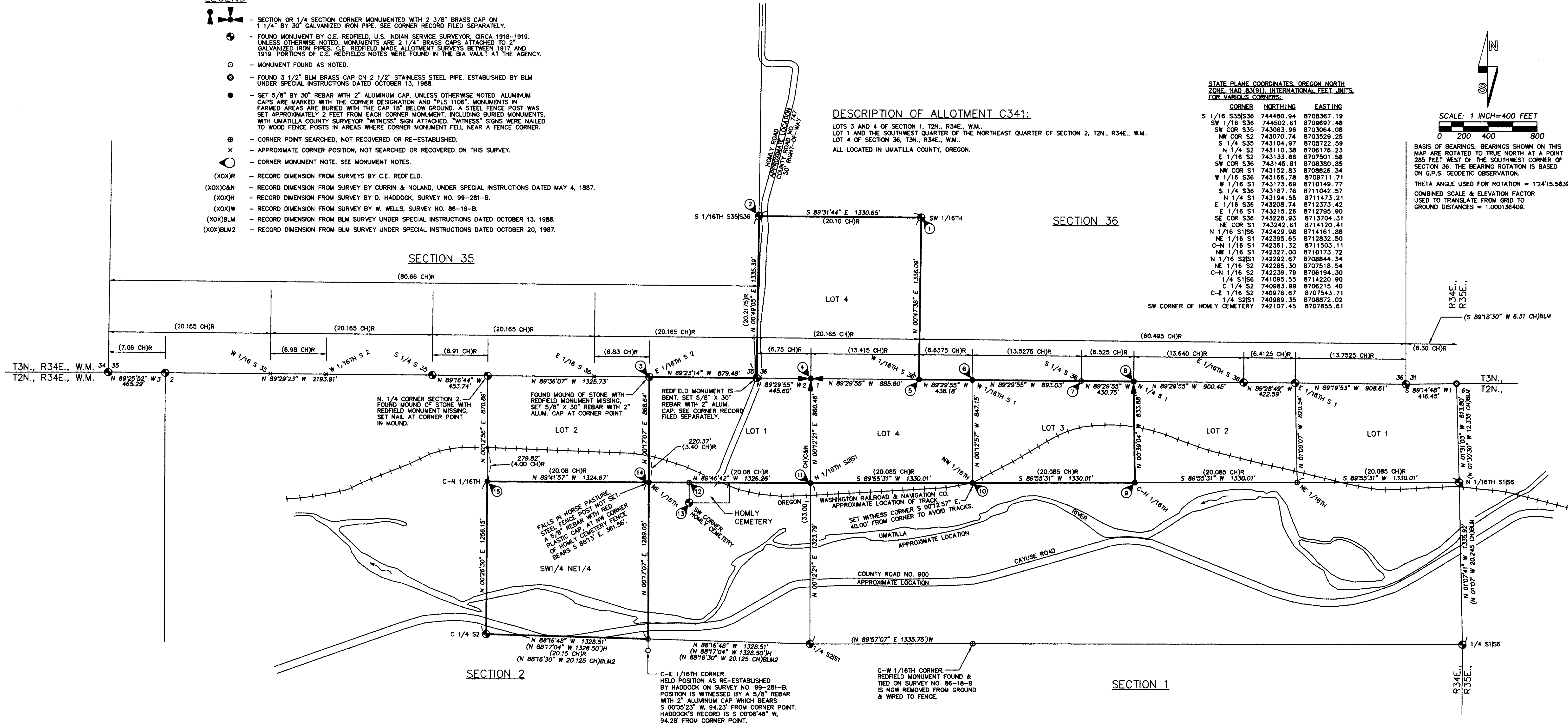


RECORD OF SURVEY

LEGEND

- ⊕ - SECTION OR 1/4 SECTION CORNER MONUMENTED WITH 2 3/8" BRASS CAP ON 1 1/4" BY 30" GALVANIZED IRON PIPE. SEE CORNER RECORD FILED SEPARATELY.
- ⊙ - FOUND MONUMENT BY C.E. REDFIELD, U.S. INDIAN SERVICE SURVEYOR, CIRCA 1918-1919. UNLESS OTHERWISE NOTED, MONUMENTS ARE 2 1/4" BRASS CAPS ATTACHED TO 2" GALVANIZED IRON PIPES. C.E. REDFIELD MADE ALLOTMENT SURVEYS IN 1917 AND 1919. PORTIONS OF C.E. REDFIELD'S NOTES WERE FOUND IN THE BIA VAULT AT THE AGENCY.
- - MONUMENT FOUND AS NOTED.
- ⊙ - FOUND 3 1/2" BLM BRASS CAP ON 2 1/2" STAINLESS STEEL PIPE, ESTABLISHED BY BLM UNDER SPECIAL INSTRUCTIONS DATED OCTOBER 13, 1988.
- - SET 5/8" BY 30" REBAR WITH 2" ALUMINUM CAP. UNLESS OTHERWISE NOTED, ALUMINUM CAPS ARE MARKED WITH THE CORNER DESIGNATION AND "PLS 1106". MONUMENTS IN FARMED AREAS ARE BURIED WITH THE CAP 18" BELOW GROUND. A STEEL FENCE POST WAS SET APPROXIMATELY 2 FEET FROM EACH CORNER MONUMENT, INCLUDING BURIED MONUMENTS, WITH UMATILLA COUNTY SURVEYOR "WITNESS" SIGN ATTACHED. "WITNESS" SIGNS WERE NAILED TO WOOD FENCE POSTS IN AREAS WHERE CORNER MONUMENT FELL NEAR A FENCE CORNER.
- ⊕ - CORNER POINT SEARCHED, NOT RECOVERED OR RE-ESTABLISHED.
- x - APPROXIMATE CORNER POSITION, NOT SEARCHED OR RECOVERED ON THIS SURVEY.
- - CORNER MONUMENT NOTE. SEE MONUMENT NOTES.
- (XOX)R - RECORD DIMENSION FROM SURVEYS BY C.E. REDFIELD.
- (XOX)C&N - RECORD DIMENSION FROM SURVEY BY CURRIN & NOLAND, UNDER SPECIAL INSTRUCTIONS DATED MAY 4, 1887.
- (XOX)H - RECORD DIMENSION FROM SURVEY BY H. HADDOCK, SURVEY NO. 99-281-B.
- (XOX)W - RECORD DIMENSION FROM SURVEY BY W. WELLS, SURVEY NO. 86-18-B.
- (XOX)BLM - RECORD DIMENSION FROM BLM SURVEY UNDER SPECIAL INSTRUCTIONS DATED OCTOBER 13, 1988.
- (XOX)BLM2 - RECORD DIMENSION FROM BLM SURVEY UNDER SPECIAL INSTRUCTIONS DATED OCTOBER 20, 1987.

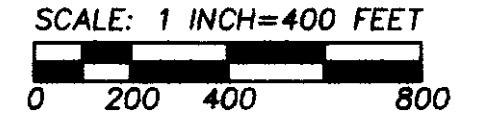


DESCRIPTION OF ALLOTMENT C341:

LOTS 3 AND 4 OF SECTION 1, T2N., R34E., W.M.,
 LOT 1 AND THE SOUTHWEST QUARTER OF THE NORTHEAST QUARTER OF SECTION 2, T2N., R34E., W.M.,
 LOT 4 OF SECTION 36, T3N., R34E., W.M.,
 ALL LOCATED IN UMATILLA COUNTY, OREGON.

STATE PLANE COORDINATES, OREGON NORTH ZONE, NAD 83(G1), INTERNATIONAL FEET UNITS, FOR VARIOUS CORNERS:

CORNER	NORTHING	EASTING
S 1/16 S35S36	744480.94	8708367.19
SW 1/16 S36	744502.61	8708697.48
SW COR S35	743063.96	8703064.08
NW COR S2	743070.74	8703529.25
S 1/4 S35	743104.97	8705722.59
N 1/4 S2	743110.38	8706176.23
E 1/16 S1	743133.68	8707501.58
SW COR S36	743145.81	8708380.85
NW COR S1	743152.83	8708826.34
W 1/16 S36	743166.78	8709711.71
N 1/16 S1	743173.69	8710149.77
S 1/4 S36	743187.76	8711042.57
N 1/4 S1	743194.55	8711473.21
E 1/16 S36	743208.74	8712373.42
E 1/16 S1	743215.26	8712795.90
SE COR S36	743226.93	8713704.31
NE COR S1	743242.81	8714120.41
N 1/16 S1S6	742428.98	8714161.88
NE 1/16 S1	742395.65	8712832.50
C-N 1/16 S1	742361.32	8711503.11
NW 1/16 S1	742327.00	8710173.72
N 1/16 S2S1	742292.67	8708844.34
NE 1/16 S2	742258.30	8707518.54
C-N 1/16 S2	742223.99	8706194.30
1/4 S1S6	741095.55	8714220.90
C 1/4 S2	740983.99	8706215.40
C-E 1/16 S2	740976.67	8707543.71
1/4 S2S1	740969.35	8708872.02
SW CORNER OF HOLLY CEMETERY	742107.45	8707855.61



BASIS OF BEARINGS: BEARINGS SHOWN ON THIS MAP ARE ROTATED TO TRUE NORTH AT A POINT 285 FEET WEST OF THE SOUTHWEST CORNER OF SECTION 36. THE BEARING ROTATION IS BASED ON G.P.S. GEODETIC OBSERVATION.
 THETA ANGLE USED FOR ROTATION = 1°24'15.5839"
 COMBINED SCALE & ELEVATION FACTOR USED TO TRANSLATE FROM GRID TO GROUND DISTANCES = 1.000136409.

NARRATIVE:

THIS SURVEY WAS MADE AT THE REQUEST OF LOIS BROUCHEAU, LAND ACQUISITION COORDINATOR FOR THE CONFEDERATED TRIBES OF THE UMATILLA INDIAN RESERVATION. THE PURPOSE OF THE SURVEY WAS TO MONUMENT THE EXTERIOR BOUNDARY OF ALLOTMENT C341.

IN MAKING THIS SURVEY, I USED THE RECORD OF CURRIN AND NOLAND, UNDER SPECIAL CONTRACT DATED MAY 4, 1887 AND AVAILABLE FIELD NOTES OF C.E. REDFIELD, U.S. INDIAN SERVICE SURVEYOR. PRIOR SURVEYS IN T3N., R34E., W.M., BY W.H. ODELL, CONTRACT NO. 114 AND BY Z.F. MOODY, CONTRACT NO. 164, WERE SUPERSEDED BY THE CURRIN AND NOLAND SURVEY. PRIOR SURVEY IN T2N., R34E., W.M., BY Z.F. MOODY, CONTRACT NO. 145, WAS SUPERSEDED BY THE CURRIN AND NOLAND SURVEY.

CURRIN AND NOLAND ESTABLISHED TOWNSHIP EXTERIORS AND SUBDIVIDED T3N., R34E., W.M. INTO SECTIONS. THEY ALSO SUBDIVIDED SECTION 36 BY THE THREE MILE RULE. IN T2N., R34E., W.M., CURRIN AND NOLAND ESTABLISHED TOWNSHIP EXTERIORS AND SUBDIVIDED THE TOWNSHIP INTO SECTIONS. CURRIN AND NOLAND PARTLY SUBDIVIDED THE SOUTH HALF OF SECTION 1 INTO ALLOTMENTS USING MODIFIED METHODS. (NOT THE THREE MILE RULE). CURRIN AND NOLAND SUBDIVIDED THE SOUTH HALF OF SECTION 2 BY THE THREE MILE RULE.

C.E. REDFIELD SUBDIVIDED SECTION 36, T3N., R34E., W.M. AND SECTIONS 1 AND 2, T2N., R34E., W.M. INTO ALLOTMENTS, USING THE THREE MILE RULE AND BY OTHER METHODS AND VARIATIONS OF THE THREE MILE RULE. REDFIELD GENERALLY RE-TRACED AND FOLLOWED THE CURRIN AND NOLAND SURVEYS. EVIDENCED BY INSPECTION OF HIS NOTES AND REPORTED RECOVERY OF CERTAIN PREVIOUSLY ESTABLISHED CURRIN AND NOLAND CORNERS. REDFIELD DID NOT RECOVER MANY OF THE CURRIN AND NOLAND CORNERS, INCLUDING ALLOTMENT CORNERS, AND RE-ESTABLISHED THEM BY VARIOUS METHODS.

ON THE TOWNSHIP LINE BETWEEN T3N. AND T2N., REDFIELD RECOVERED CURRIN AND NOLAND CORNERS AT THE SOUTHWEST CORNER OF SECTION 36 AND SOUTHWEST CORNER OF SECTION 35. T3N., R34E. REDFIELD RE-ESTABLISHED ALL CORNERS BETWEEN THE SOUTHWEST CORNER OF SECTION 36 AND SOUTHWEST CORNER OF SECTION 35 BY PROPORTIONAL METHODS AND ESTABLISHED NEW CORNERS APPLYING TO SECTIONS ON BOTH SIDES OF THE TOWNSHIP LINE, INCLUDING 1/16TH CORNERS. THEREFORE, ALL RECOVERED REDFIELD CORNERS HAVE EQUAL WEIGHT FOR BOTH DISTANCE AND ALIGNMENT. I USED REDFIELD'S RECORD ALONG THE TOWNSHIP LINE IN RE-ESTABLISHING THE MISSING CORNERS NEEDED FOR THIS SURVEY. THE MISSING CORNERS ALONG THE TOWNSHIP LINE HAVE BEEN REMOVED OR DESTROYED BY YEARS OF FARMING. I CONSIDERED RE-ESTABLISHING MISSING CORNERS ON THE PARALLEL OF LATITUDE BETWEEN FOUND CORNERS, BUT DECIDED THAT WOULD BE AN EXERCISE IN ABSURDITY, CONSIDERING THE SMALL DIFFERENCES THE PARALLEL OF LATITUDE CORRECTION WOULD MAKE BETWEEN FOUND CORNERS.

REDFIELD'S NOTES DO NOT REPORT A RE-MEASURE DISTANCE BETWEEN THE NORTHWEST CORNER OF SECTION 1 AND THE WEST 1/4 CORNER OF SECTION 1. I USED THE CURRIN AND NOLAND RECORD TO POSITION THE N 1/16TH CORNER, BY PROPORTIONAL MEASURE.

NARRATIVE, CONTINUED FROM LEFT.....

IN SECTION 1, T2N., R34E., W.M., REDFIELD USED THE THREE MILE RULE TO ESTABLISH 1/16TH CORNERS BETWEEN NORTH 1/16TH CORNERS ON THE EAST AND WEST LINES OF SECTION 1. I RE-ESTABLISHED NEEDED CORNERS ON THIS LINE PROPORTIONALLY, USING THE REDFIELD RECORD.

IN SECTION 2, T2N., R34E., W.M., I RE-ESTABLISHED THE NE 1/16TH AND HELD AN OLD FENCE CORNER FOR THE C-N 1/16TH, AS INDICATED IN "MONUMENT NOTES".

THIS SURVEY WAS MADE BY A 2 PERSON CREW USING TRIMBLE 5700 GEODETIC GPS RECEIVERS OPERATED IN STATIC AND REAL TIME KINEMATIC MODES. CORNERS TIED AND ESTABLISHED WERE VERIFIED BY REDUNDANT OBSERVATIONS. THE C-N 1/16TH CORNER OF SECTION 1 IS LOCATED IN TREES AND A LEICA TOR803 3 SECOND TOTAL STATION WAS USED TO ESTABLISH THE CORNER MONUMENT. A TRIMBLE PRO XR BEACON CORRECTED GPS UNIT WAS USED FOR CORNER RECONNAISSANCE AND SEARCH. THE LOCATIONS OF CAYUSE ROAD, HOLLY ROAD, THE RAILROAD TRACKS AND THE UMATILLA RIVER, SHOWN ON THE MAP ARE APPROXIMATE. THE LOCATIONS WERE DETERMINED FROM RECTIFIED DIGITAL IMAGES.

GROSS AREAS FOR ALLOTMENT C341:

GROSS AREAS DO NOT EXCLUDE RIGHT-OF-WAY FOR COUNTY ROADS OR RAILROAD.

T3N., R34E., W.M.	ACRES	M/L
LOT 4 SECTION 36	40.81	M/L
T2N., R34E., W.M.	25.60	M/L
LOT 3, SECTION 1	28.01	M/L
LOT 4, SECTION 1	28.30	M/L
LOT 1, SECTION 2	38.75	M/L
SW 1/4 NE 1/4 SECTION 2	38.75	M/L
TOTAL	157.47	M/L

MONUMENT NOTES:

- 1 FOUND REDFIELD MONUMENT FOR CORNER. A "WITNESS" SIGN WAS NOT PLACED FOR THIS CORNER.
- 2 NAILED "WITNESS" SIGN TO FENCE CORNER POST NEAR CORNER.
- 3 SET STEEL FENCE POST 2 FEET EAST OF CORNER AND ATTACHED "WITNESS" SIGN.
- 4 CORNER FALLS IN FARMED FIELD. MONUMENT CAP IS BURIED 18 INCHES BELOW GROUND. SET STEEL FENCE POST WITH "WITNESS" SIGN ATTACHED, 2 FEET EAST OF CORNER. SEE CORNER RECORD FILED SEPARATELY.
- 5 CORNER FALLS IN FARMED FIELD. MONUMENT CAP IS BURIED 18 INCHES BELOW GROUND. SET STEEL FENCE POST WITH "WITNESS" SIGN ATTACHED, 2 FEET EAST OF CORNER.
- 6 CORNER FALLS IN FARMED FIELD. MONUMENT CAP IS BURIED 18 INCHES BELOW GROUND. SET STEEL FENCE POST WITH "WITNESS" SIGN ATTACHED, 2 FEET EAST OF CORNER.
- 7 CORNER SEARCHED, NOT RECOVERED AND NOT RE-ESTABLISHED. CORNER FALLS IN CRP FIELD, PREVIOUSLY FARMED.
- 8 CORNER FALLS IN CRP FIELD, PREVIOUSLY FARMED. MONUMENT CAP IS BURIED 8 INCHES BELOW GROUND LINE. COULD NOT BURY THE MONUMENT DEEPER BECAUSE OF ROCK. SET STEEL FENCE POST WITH "WITNESS" SIGN ATTACHED, 2 FEET EAST OF CORNER. SEE CORNER RECORD FILED SEPARATELY.
- 9 CORNER FALLS IN ERODED RIVER BED AREA, IN TREES. SET STEEL FENCE POST 2 FEET EAST OF CORNER WITH "WITNESS" SIGN ATTACHED. ATTACHED "BEARING OBJECT" SIGN TO ROAD REFLECTOR SIGN SOUTH 10° EAST, 515 FEET, MORE OR LESS, FROM CORNER POINT.
- 10 WITNESS MONUMENT IS SET IN FLAT GRAVELED AREA, SOUTH OF TRACKS. SET STEEL FENCE POST 2 FEET SOUTH OF WITNESS CORNER WITH "WITNESS" SIGN ATTACHED. IN SURVEY NO. 86-18-B, I FOUND THE REDFIELD MONUMENT FOR THIS CORNER AT THE BASE OF A ROCK BLUFF. S 14°45' W, 115 FEET FROM THE CORNER POINT. I DID NOT RECOVER THE DISPLACED REDFIELD MONUMENT ON THIS SURVEY.
- 11 RE-ESTABLISHED THIS CORNER BY PROPORTIONATE MEASURE BETWEEN THE RECOVERED WEST 1/4 CORNER OF SECTION 1 AND THE RE-ESTABLISHED NORTHWEST CORNER OF SECTION 1 USING THE CURRIN AND NOLAND RECORD. REDFIELD'S NOTES DO NOT DISCLOSE WHETHER HE FOUND OR RE-ESTABLISHED THIS CORNER, OR THE RE-MEASURE DISTANCE BETWEEN CONTROLLING CORNERS. THE CORNER FALLS IN A FARMED FIELD. MONUMENT CAP IS BURIED 18 INCHES BELOW GROUND SURFACE. SET STEEL FENCE POST 2 FEET EAST OF CORNER WITH "WITNESS" SIGN ATTACHED.

MONUMENT NOTES, CONTINUED FROM LEFT.....

- 12 APPROXIMATE NW CORNER OF HOLLY CEMETERY. FOUND REDFIELD MONUMENT, OUT OF GROUND WITH BRASS CAP MISSING, LYING AT FENCE CORNER APPROXIMATELY 30 FEET SE OF CORNER POINT.
- 13 FOUND REDFIELD MONUMENT AT SW CORNER OF HOLLY CEMETERY. MONUMENT IS FIRMLY SET. I USED THIS CORNER MONUMENT, TOGETHER WITH REDFIELD'S NOTES, TO RE-ESTABLISH THE NE 1/16TH CORNER OF SECTION 2. SEE NOTE 14.
- 14 I USED THE RECOVERED REDFIELD MONUMENT FOR THE SW CORNER OF THE HOLLY CEMETERY. TO RE-ESTABLISH THIS CORNER, THE REDFIELD NOTES INDICATE HE SET THE NE AND NW CORNERS OF THE CEMETERY, RELATIVE TO THE 1/16TH LINE BETWEEN THE N 1/16TH AND NE 1/16TH CORNERS OF SECTION 2. THE NE CORNER OF THE CEMETERY IS DESTROYED BY RAILROAD RE-CONSTRUCTION. REDFIELD'S NOTES ARE NOT CLEAR AS TO WHETHER HE ESTABLISHED THE SE AND SW CORNERS OF THE CEMETERY, BUT HE DID ESTABLISH THE SW CORNER. WE RECOVERED IT. REDFIELD'S REPORTED DISTANCE FROM THE SW CORNER OF THE CEMETERY TO THE 1/16TH SECTION LINE IS 2.5 CHAINS OR 165 FEET. TO RE-ESTABLISH THE NE 1/16TH CORNER, I HELD A POINT 165.00 FEET NORTH OF THE SW CORNER OF THE CEMETERY AS A POINT ON THE 1/16TH SECTION LINE AND PROJECTED THE LINE WEST TO INTERSECT THE N-S CENTERLINE OF THE NORTHEAST QUARTER OF SECTION 2, DEFINED BY THE C-E 1/16TH CORNER AND RECOVERED E 1/16TH CORNER OF SECTION 2. FROM THE REDFIELD MONUMENT RECOVERED AT THE SOUTHWEST CORNER OF THE HOLLY CEMETERY, THE RE-ESTABLISHED POSITION FOR THE NE 1/16TH CORNER OF SECTION 2 BEARS N 00°13'18" E, 165.00 FEET AND NORTH 89°46'42" WEST, 333.78 FEET. I OBSERVE, FROM REDFIELD'S NOTES, THAT HE RAN NORTH OR SOUTH ON THE N-S CENTERLINE OF THE NE 1/4, TO ESTABLISH THE NE 1/16TH CORNER, BECAUSE OF HIS CALL TO THE RAILROAD TRACK.
- 15 HELD FENCE INTERSECTION WITH FENCE RUNNING NORTH, SOUTH AND EAST AS BEST REMAINING EVIDENCE OF THE C-N 1/16TH CORNER OF SECTION 2, AND REMONUMENTED AS SHOWN. I OBSERVE, FROM REDFIELD'S NOTES, THAT HE RAN NORTH OR SOUTH ON THE NORTH-SOUTH CENTERLINE OF THE SECTION TO ESTABLISH THE C-N 1/16TH, BECAUSE OF HIS CALL TO THE RAILROAD TRACK.

REGISTERED PROFESSIONAL LAND SURVEYOR
 WILLIAM R. WELLS
 OREGON
 JULY 22, 1977
 WILLIAM R. WELLS
 1106
 RENEWS 6/30/08

WILLIAM R. WELLS, PLS
 2602 N.E. RIVERSIDE PLACE
 P.O. BOX 1696
 PENDLETON, OREGON
 PHONE: (541) 276-6362

PROJECT:
 SURVEY FOR:
 CONFEDERATED TRIBES
 OF THE
 UMATILLA INDIAN RESERVATION
 ALLOTMENT C341, LOCATED IN SECTIONS 1 AND 2, T2N., R34E., W.M., AND SECTION 36, T3N., R34E., W.M., UMATILLA COUNTY, OREGON.

DATE: 07/07 DR. BY: WRW
 CK. BY: WRW NO: 07-1142

RECEIVED BY
 Umatilla County Surveyor
 Date: 8-07
 Rec'd by: RE
 No. 072366
 (HOMLYCEMGRD)