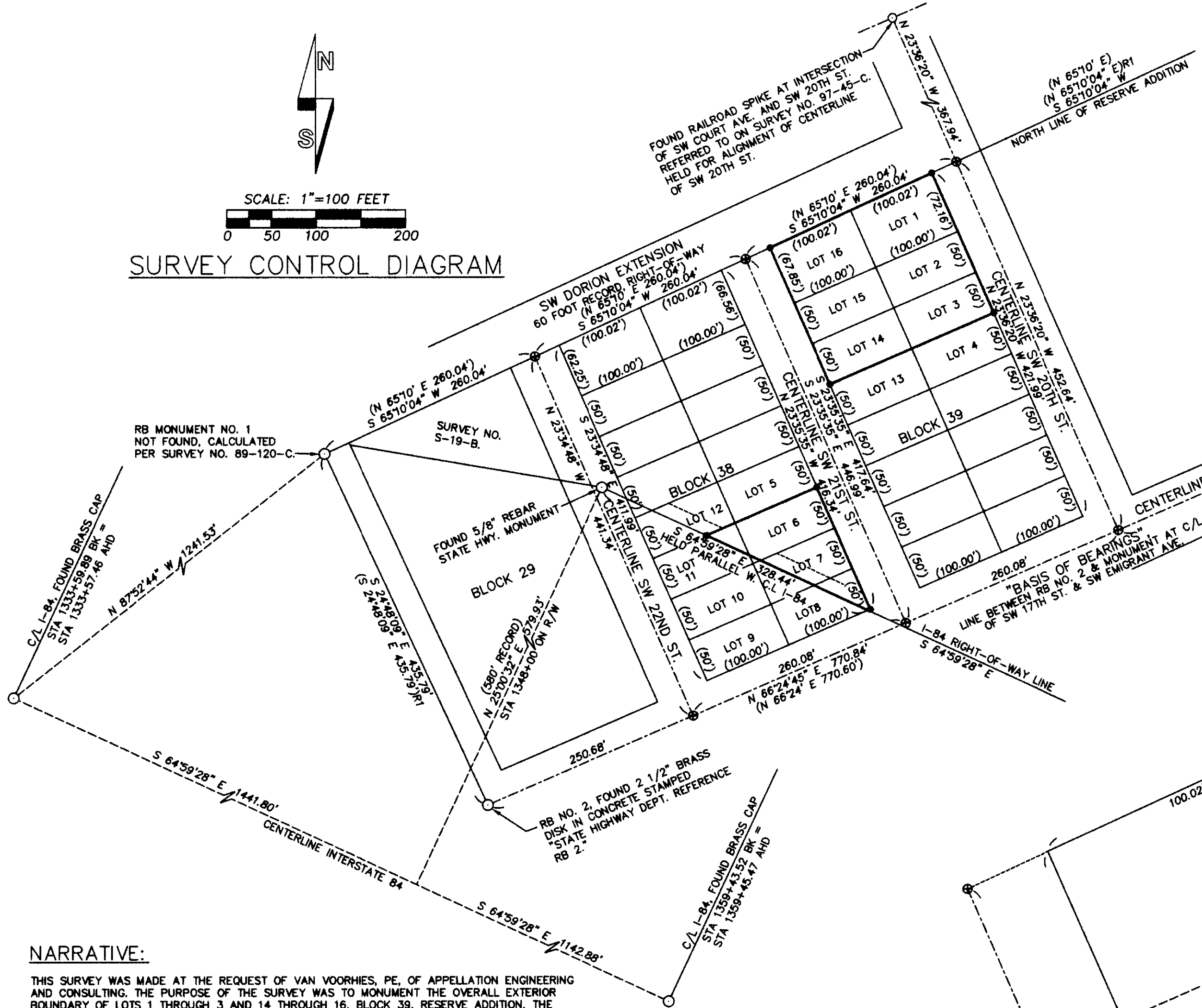


# RECORD OF SURVEY



SCALE: 1"=100 FEET  
0 50 100 200

## SURVEY CONTROL DIAGRAM



SCALE: 1"=30 FEET  
0 15 30 60

### NARRATIVE:

THIS SURVEY WAS MADE AT THE REQUEST OF VAN VOORHIES, PE. OF APPELLATION ENGINEERING AND CONSULTING. THE PURPOSE OF THE SURVEY WAS TO MONUMENT THE OVERALL EXTERIOR BOUNDARY OF LOTS 1 THROUGH 3 AND 14 THROUGH 16, BLOCK 39, RESERVE ADDITION. THE OVERALL EXTERIOR BOUNDARY OF THE PORTIONS OF LOTS 6, 7, 8 & 11, BLOCK 38, RESERVE ADDITION, NORTH OF THE INTERSTATE HIGHWAY 84 RIGHT-OF-WAY WAS ALSO MONUMENTED.

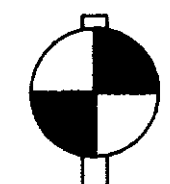
ADDITIONALLY, A TOPOGRAPHIC SURVEY WAS MADE OF CERTAIN PORTIONS OF SW 20TH AND 21ST STREETS AND SW DORION EXTENSION, ADJUTING SURVEYED LOTS. UNDERGROUND UTILITIES WERE TIED AND SHOWN BASED ON "CALL BEFORE YOU DIG" TICKET LOCATE NO. 6221699. CERTAIN OTHER ABOVE GROUND FEATURES ARE ALSO LOCATED AND SHOWN.

MONUMENTS CONTROLLING THE BOUNDARY SURVEY AND CALCULATIONS MADE TO DETERMINE LOTS WITHIN BLOCKS 38 AND 39 OF RESERVE ADDITION ARE SHOWN ON THE SURVEY CONTROL DIAGRAM. CERTAIN REFERENCE SURVEYS ARE ALSO NOTED ON THE CONTROL DIAGRAM. MEASUREMENTS ON THE CURRENT SURVEY, WHICH ARE COMMON TO THOSE REPORTED ON SURVEY NO. 02-284-B, ARE IDENTICAL. SURVEY NO. 02-284-B DETERMINED THE BOUNDARY OF BLOCK 39, RESERVE ADDITION. THE RIGHT-OF-WAY LINE OF INTERSTATE HIGHWAY NO. 84 WAS DETERMINED BASED ON HIGHWAY MONUMENTS FOUND, AS SHOWN ON THE CONTROL DIAGRAM.

WITH THE EXCEPTION OF THE 15 FOOT UTILITY EASEMENT TO THE CITY OF PENDLETON AS DESCRIBED IN BOOK 351, PAGE 225, DEED RECORDS OF UMATILLA COUNTY, RECORD EASEMENTS AND ENCUMBRANCES ACROSS THE SURVEYED PROPERTY WERE NOT RESEARCHED OR SHOWN. THE EASEMENT DESCRIBED IN BOOK 351, PAGE 225, DEED RECORDS, IS ACROSS PORTIONS OF LOTS 7, 8 AND 12, BLOCK 38, RESERVE ADDITION.

THIS SURVEY WAS MADE BY A TWO PERSON CREW USING A SOKKIA SET 48 FIVE SECTION TOTAL STATION BY A COMBINATION OF CLOSED TRAVERSES AND RADIAL TIES. MONUMENTS WERE ESTABLISHED BY RADIAL METHODS AND VERIFIED BY SEPARATE OBSERVATIONS FROM DIFFERENT BACK SIGHTS.

NOTE: RESERVE ADDITION WAS ORIGINALLY PLATTED WITH THE NAME OF RESERVE ADDITION. RESERVED ADDITION IS ALSO COMMONLY KNOWN AS RESERVATION ADDITION.



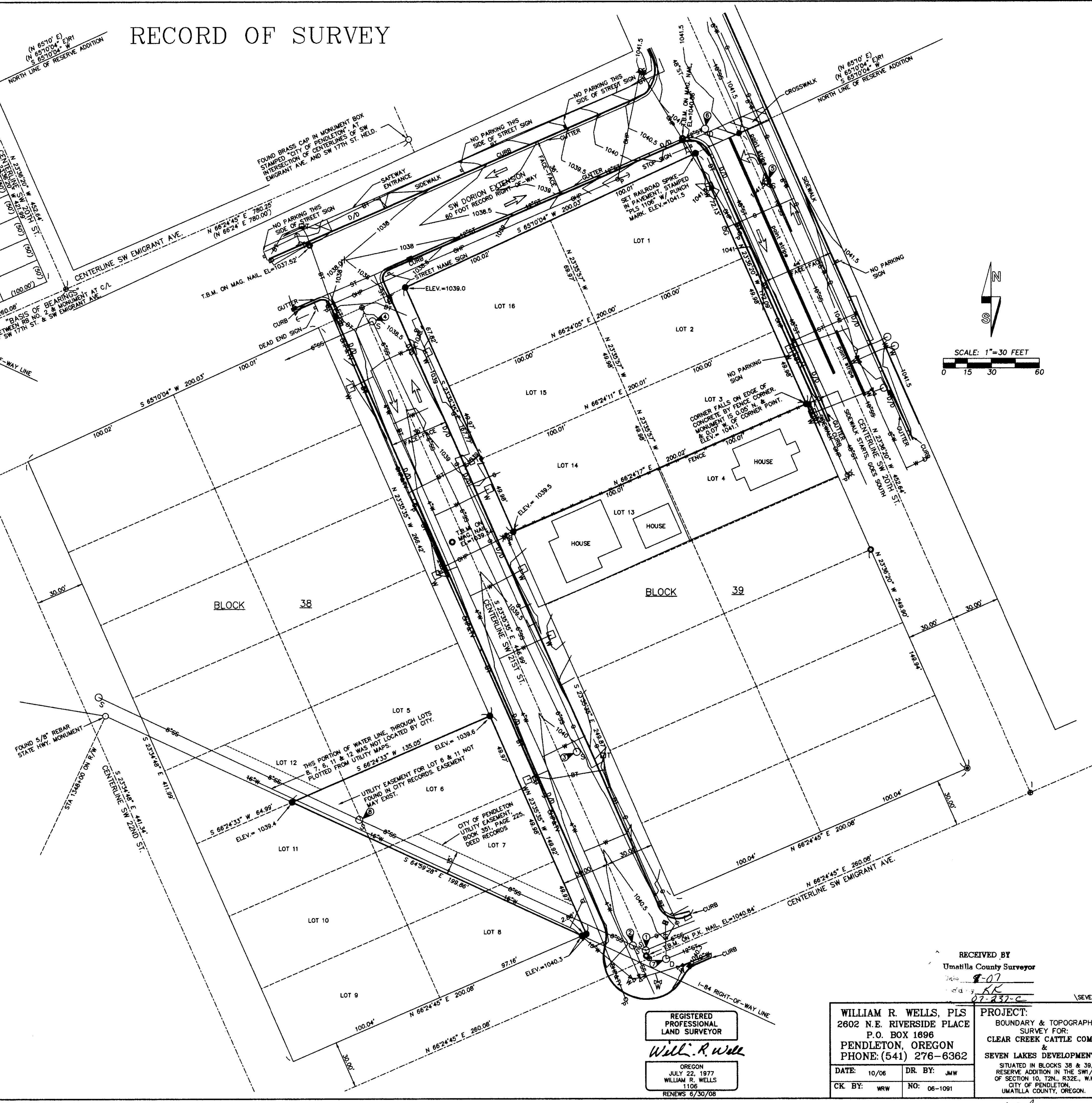
VERTICAL DATUM  
CITY OF PENDLETON VERTICAL DATUM  
ELEVATIONS MEASURED FROM BM RB NO. 2.  
ELEVATION = 1053.09

### LEGEND

- — MONUMENT FOUND AS NOTED.
- — SET 5/8" BY 2 1/4" REBAR WITH 1 1/4" RED PLASTIC CAP MARKED OR PLS 1108 WA PLS 17372", UNLESS OTHERWISE NOTED.
- ⊙ — FOUND RAILROAD SPIKE SET ON SURVEY NO. 02-284-B.
- ⊕ — FOUND 5/8" REBAR WITH YELLOW PLASTIC CAP SET ON SURVEY NO. 02-284-B.
- ⊖ — FOUND 5/8" REBAR WITH ALUMINUM CAP SET ON SURVEY NO. 82-34-A.
- ⊗ — CALCULATED POINT ONLY, NOT SET OR FOUND.
- (XOX) — RECORD DIMENSION, PLAT OF RESERVE ADDITION.
- (XOX)R1 — RECORD DIMENSION, SURVEY NO. 89-120-C.
- ⊙ — INDICATES TEMPORARY BENCH MARK (T.B.M.) SET ON THIS SURVEY.
- α — FIRE HYDRANT.
- ⊠ — WATER METER.
- ⊡ — WATER MANHOLE.
- ⊢ — WATER VALVE.
- ⊣ — SANITARY SEWER MANHOLE.
- ⊤ — STORM DRAIN MANHOLE.
- ⊥ — CATCH BASIN.
- ⊦ — POWER POLE ANCHOR.
- ⊧ — POWER POLE.
- ⊨ — STREET LIGHT. STREET LIGHTS ARE MOUNTED ON POWER POLES.
- ⊩ — GAS METER.
- ⊪ — TELEPHONE PEDESTAL.
- ⊫ — SIGN.
- D/D — INDICATES DRIVEWAY DROP.
- 1041.6X — INDICATES SPOT ELEVATION.
- S— — SANITARY SEWER LINE, SIZE NOTED FROM CITY UTILITY MAPS.
- S— — STORM SEWER LINE, SIZE NOTED FROM CITY UTILITY MAPS.
- W— — WATER LINE, SIZE NOTED FROM CITY UTILITY MAPS.
- HP— — OVERHEAD POWER LINE.
- HP&TV— — OVERHEAD POWER AND TELEVISION LINES.
- BT— — BURIED TELEPHONE LINE.
- G— — BURIED NATURAL GAS LINE.

### SANITARY & STORM SEWER MANHOLE INFORMATION. NOTE SYMBOLS IDENTIFY MANHOLES:

- 1 RIM ELEV. = 1040.7  
I.E. OUT (W) = 1036.1
- 2 RIM ELEV. = 1040.6  
I.E. IN (E) = 1036.1  
I.E. OUT (W) = 1035.6
- 3 RIM ELEV. = 1040.1  
I.E. OUT (N) = 1035.9
- 4 RIM ELEV. = 1038.6  
I.E. IN (S) = 1034.0
- 5 RIM ELEV. = 1041.5  
I.E. = 1034.5
- 6 RIM ELEV. = 1041.4  
I.E. IN (S) = 1033.7  
I.E. IN (W) = 1034.6
- 7 RIM ELEV. = 1040.8  
I.E. OUT (E) = 1038.6
- 8 RIM ELEV. = 1038.8  
I.E. IN (W) = 1033.9



REGISTERED PROFESSIONAL LAND SURVEYOR  
*William R. Wells*  
OREGON  
JULY 22, 1977  
WILLIAM R. WELLS  
1106  
RENEWS 6/30/08

RECEIVED BY  
Umatilla County Surveyor  
Date: 7-07  
Initials: RW  
07-237-C

<b>WILLIAM R. WELLS, PLS</b> 2602 N.E. RIVERSIDE PLACE P.O. BOX 1696 PENDLETON, OREGON PHONE: (541) 276-6362	<b>PROJECT:</b> BOUNDARY & TOPOGRAPHIC SURVEY FOR: CLEAR CREEK CATTLE COMPANY & SEVEN LAKES DEVELOPMENT, LLC. SITUATED IN BLOCKS 38 & 39, RESERVE ADDITION IN THE SW 1/4 OF SECTION 10, T2N, R32E, W.M., CITY OF PENDLETON, UMATILLA COUNTY, OREGON.
DATE: 10/06	DR. BY: JMW
CK BY: WRW	NO: 06-1091

10CB