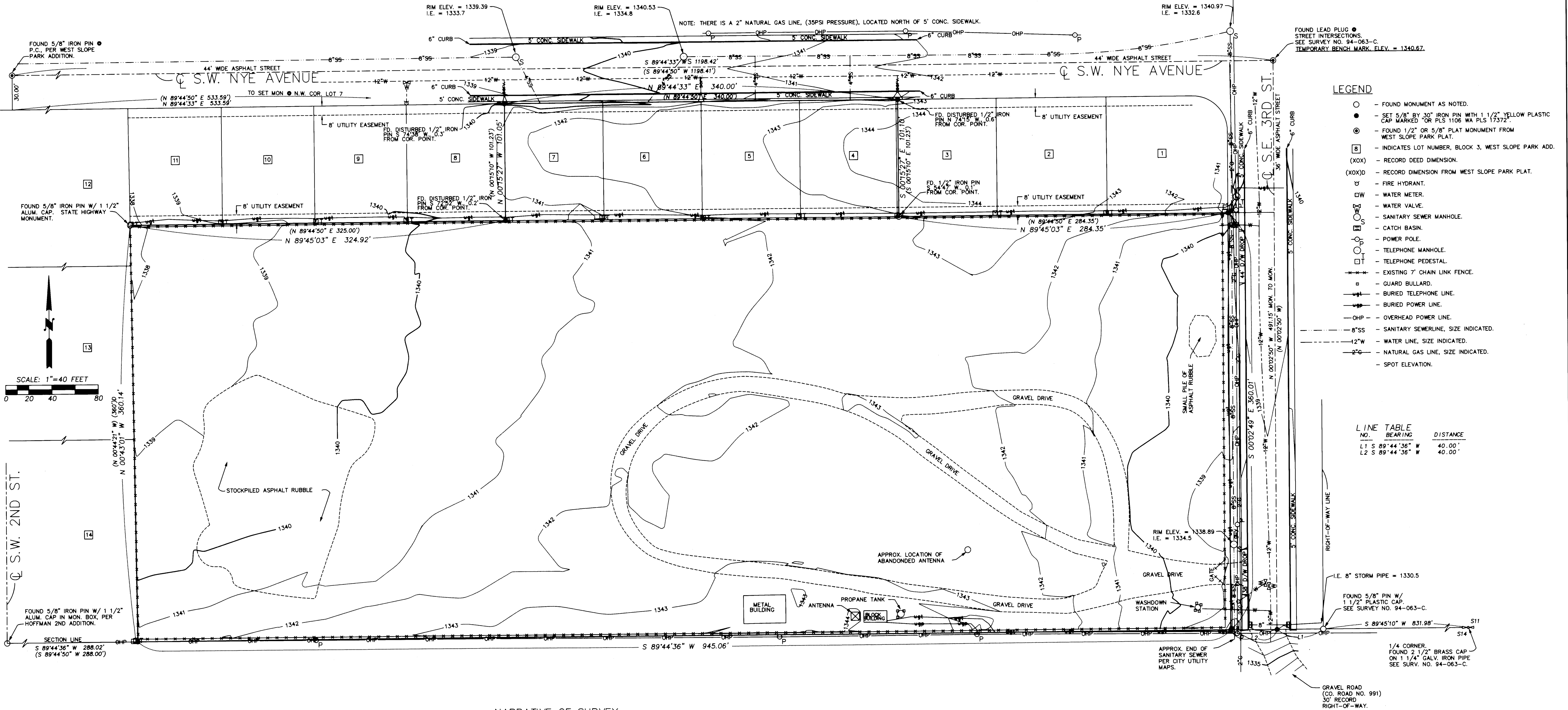


VERTICAL DATUM
CITY OF PENDLETON, BASED ON GPS STATION NO. 94, ELEV. = 1296.54



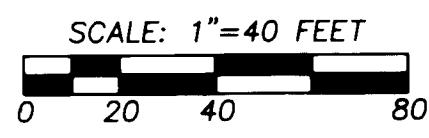
FOUND LEAD PLUG @
STREET INTERSECTION.
SEE SURVEY NO. 94-063-C.
TEMPORARY BENCH MARK. ELEV. = 1340.67.

LEGEND

- - FOUND MONUMENT AS NOTED.
- - SET 5/8" BY 30" IRON PIN WITH 1 1/2" YELLOW PLASTIC CAP MARKED OR PLS 1106 WA PLS 17372.
- ⊙ - FOUND 1/2" OR 5/8" PLAT MONUMENT FROM WEST SLOPE PARK PLAT.
- ⊠ - INDICATES LOT NUMBER, BLOCK 3, WEST SLOPE PARK ADD.
- (XOX) - RECORD DEED DIMENSION.
- (XOX)D - RECORD DIMENSION FROM WEST SLOPE PARK PLAT.
- ⊕ - FIRE HYDRANT.
- ⊖ - WATER METER.
- ⊗ - WATER VALVE.
- ⊙ - SANITARY SEWER MANHOLE.
- ⊚ - CATCH BASIN.
- ⊛ - POWER POLE.
- ⊜ - TELEPHONE MANHOLE.
- ⊝ - TELEPHONE PEDESTAL.
- ⊞ - EXISTING 7' CHAIN LINK FENCE.
- ⊟ - GUARD BULLARD.
- ⊠ - BURIED TELEPHONE LINE.
- ⊡ - BURIED POWER LINE.
- ⊣ - OVERHEAD POWER LINE.
- ⊤ - 8"SS - SANITARY SEWERLINE, SIZE INDICATED.
- ⊥ - 12" W - WATER LINE, SIZE INDICATED.
- ⊦ - 2" G - NATURAL GAS LINE, SIZE INDICATED.
- - SPOT ELEVATION.

LINE TABLE

| NO. | BEARING | DISTANCE |
|-----|---------------|----------|
| L1 | S 89°44'36" W | 40.00' |
| L2 | S 89°44'36" W | 40.00' |



UTILITY NOTES

- 4" SANITARY SEWER STUBS FROM S.W. NYE AVENUE ARE PLOTTED FROM CITY AS-BUILTS AND ARE NOT FIELD VERIFIED.
- WATER SERVICE STUBS FROM S.W. NYE AVENUE ARE PLOTTED FROM CITY AS-BUILTS AND LOCATION AND SIZE ARE NOT FIELD VERIFIED.
- 2" NATURAL GAS LINE IN S.E. 3RD STREET HAS 35 PSI PRESSURE.

NARRATIVE OF SURVEY

THIS SURVEY WAS PREPARED AT THE REQUEST OF PHILLIP McCURDY OF PHILLIP R. McCURDY ARCHITECTS, P.C., TO RECOVER OR REMONUMENT THE OVERALL BOUNDARY OF STATE OF OREGON LANDS AND TO PREPARE A 1 FOOT CONTOUR INTERVAL TOPOGRAPHIC MAP.

IN DETERMINING THE BOUNDARY OF STATE PARCEL LOCATED SOUTH OF WEST SLOPE PARK ADDITION, MONUMENTS DEFINING THE SOUTH LINE OF SECTION 11, THE CENTERLINE OF S.E. 3RD STREET AND AN EXISTING STATE MONUMENT AT THE NORTHWEST CORNER OF THE PARCEL WERE HELD. IN DETERMINING THE OVERALL EXTERIOR OF LOTS 4, 5, 6 & 7, BLOCK 3, WEST SLOPE PARK ADDITION, THE MONUMENTED CENTERLINE OF S.W. NYE AVENUE WAS USED. EXISTING MONUMENTS WERE RECOVERED AT EACH OF THE CORNERS OF LOTS 4, 5, 6 & 7 BUT THEY HAD BEEN DISTURBED BY CONSTRUCTION AND WERE NOT USED FOR CONTROL.

MEASUREMENTS WERE MADE BY RADIAL METHODS USING LEICA CENTIMETER QUALITY "REAL TIME" AND "STOP & GO" GPS MEASUREMENTS AND WITH A SOKKIA SET 4B FIVE SECOND TOTAL STATION.

NOTES ON CATCH BASINS AT SOUTH END OF S.E. 3RD STREET:
INVERT OUT, 8" PIPE AT WEST CATCH BASIN = 1336.0
INVERT IN, 8" PIPE AT EAST CATCH BASIN = 1334.8 +/-, BASIN FILLED W/ DEBRIS.

THIS MAP IS BEING RECORDED BECAUSE THE 1996 VERSION CANNOT BE FOUND AT THE UMATILLA COUNTY SURVEYORS' OFFICE, 01-26-09.

REGISTERED PROFESSIONAL LAND SURVEYOR
William R. Wells
OREGON
JULY 22, 1977
WILLIAM R. WELLS
1106
RENEWS 6/30/98

WILLIAM R. WELLS, PLS
357 N.E. HWY. 11
P.O. BOX 1696
PENDLETON, OR 97801
PHONE: (541) 276-6362

PROJECT:
SURVEY FOR:
PHILLIP R. McCURDY ARCHITECTS, P.C.
OF CERTAIN STATE OF OREGON LANDS LOCATED IN THE SW 1/4 OF SECTION 11, TOWNSHIP 2 NORTH, RANGE 32 EAST, W.M., UMATILLA COUNTY, OREGON.

DATE: 10/08/96 DR. BY: WRW
CK. BY: WRW NO: 96-411

Umatilla County Surveyors
1-09
by: RK
of: JWC