

SURVEYOR'S NARRATIVE:

THE PURPOSE OF THIS SURVEY IS TO STAKE THE FOUR CORNERS OF LOTS 15 THROUGH 19, "STANFIELD ORCHARD OUTLOTS", AND THE FOUR CORNERS OF BLOCK 78 OF "COE'S 1st ADDITION" TO THE CITY OF STANFIELD, TO SEE WHERE THE BUILDINGS LIE IN RELATION TO THE PROPERTY LINES.

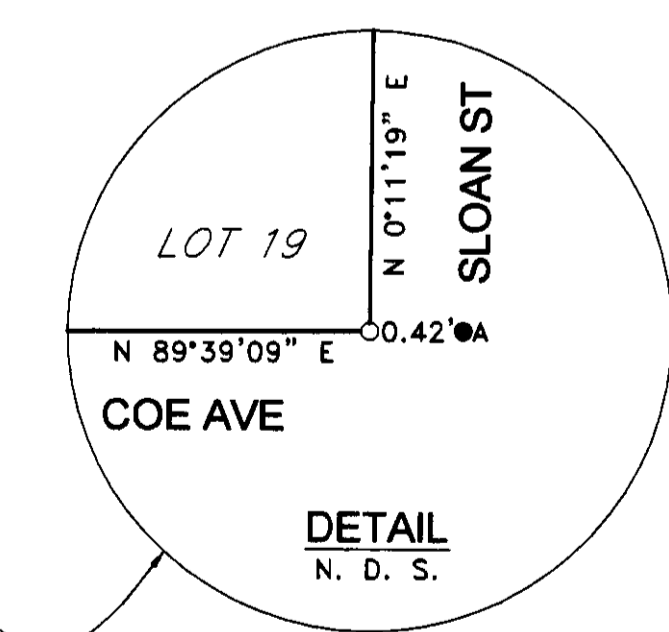
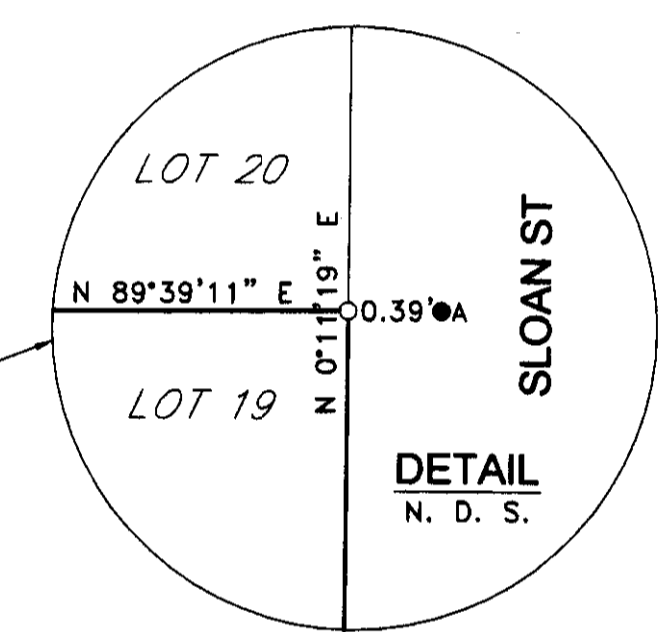
I RETRACED BOTH PLATS FROM EXISTING MONUMENTS TO ESTABLISH THE PROPERTY CORNERS. WHEN I WENT TO SET THE CORNERS I DISCOVERED MONUMENTS SET BY WAGNER IN A 1998 SURVEY FOR CHOWNING. HE HAD SET ALL OF THE CORNERS IN HIS SURVEY BUT THE NORTH CORNERS OF BLOCK 78 HAVE BEEN OBLITERATED BY THE STANFIELD DITCH RECONSTRUCTION. I COMPUTED THE NORTH CORNERS OF SAID BLOCK 78 BY PROPORTION AND SET MONUMENTS ON THE EAST AND WEST SIDES ON THE TOP OF THE DIKE ABOUT 25 FEET SOUTH OF THE NORTH CORNERS. I HELD FOUR OF WAGNER'S 1998 MONUMENTS BUT SET NEW ONES ABOUT 0.4 FOOT WEST OF HIS EAST ONES ON SLOAN STREET. FOR SOME REASON WAGNER STAKED THE SOUTH LINE OF LOTS 15 THROUGH 19 A DISTANCE OF 0.46 FEET LONG INSTEAD OF THE RECORD DISTANCE AS HE SHOULD HAVE.

I USED A TOPCON HIPER+ G.P.S. TO CONDUCT THIS SURVEY.

REGISTERED PROFESSIONAL LAND SURVEYOR

G. Dennis Edwards

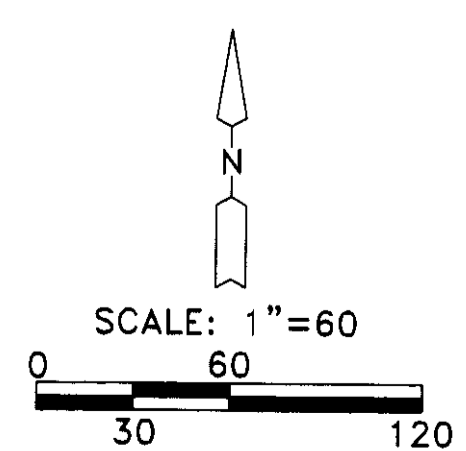
OREGON
JULY 16, 1971
G. DENNIS EDWARDS
9 5 1
RENEWS 12/31/2009



FND. 1/4\"/>

FND. 1 1/4\"/>

FND. 1/2\"/>



- LEGEND:**
- FOUND MONUMENTS AS NOTED OR
 - ▲ FOUND 5/8" I. REBAR, WAGNER 1998 SURVEY FOR CHOWNING
 - SET 5/8"x30" IRON REBAR WITH PLASTIC CAP #951
 - ⊙ COMPUTED LOCATION
 - (000) OF RECORD, WAGNER 1998 SURVEY FOR CHOWNING
 - [000] OF RECORD, "COE'S 1st ADD." & "STANFIELD ORCHARD OUTLOTS" RECEIVED BY Umatilla County Surveyors

SURVEY FOR STUART BONNEY IN BLOCK 78, "COE'S 1st ADD.," & IN LOTS 15-19, "STANFIELD ORCHARD OUTLOTS," IN NW 1/4, SE 1/4, SEC. 32, T 4 N, R 29 E, W.M., UMATILLA COUNTY, OREGON 07/20/2009 JOB #S0906058 EDWARDS SURVEYING P.O. BOX 763 541-567-3336 HERMISTON, OREGON 97838 DRAWN BY JMC

9-09
12
09-138-C