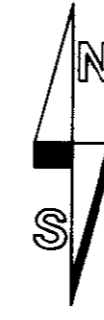
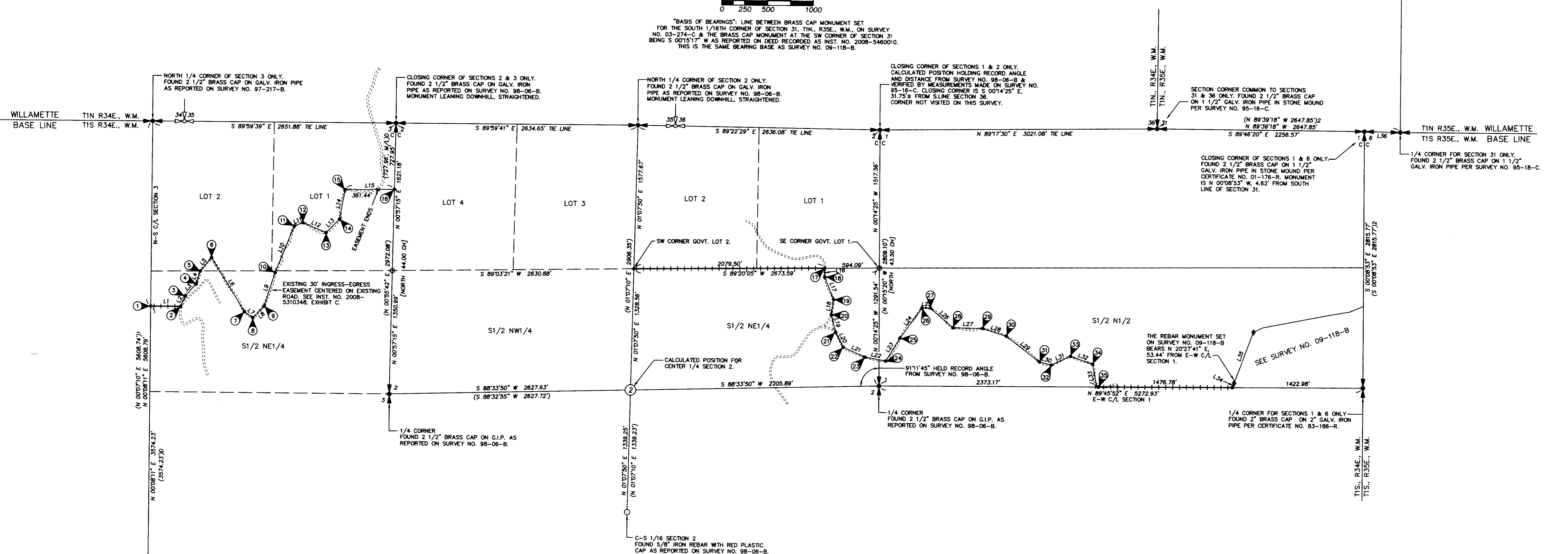


RECORD OF SURVEY



SCALE: 1 INCH=500 FEET
0 250 500 1000

"BASIS OF BEARINGS": LINE BETWEEN BRASS CAP MONUMENT SET FOR THE SOUTH 1/16TH CORNER OF SECTION 31, T1N., R35E., W.M., ON SURVEY NO. 03-274-C & THE BRASS CAP MONUMENT AT THE SW CORNER OF SECTION 31 BEING S 00°15'17" W AS REPORTED ON DEED RECORDED AS INST. NO. 2008-5460010. THIS IS THE SAME BEARING BASE AS SURVEY NO. 09-118-B.



SET MONUMENT NOTES:

BEARINGS FROM SET MONUMENTS TO STEEL FENCE POSTS WERE MEASURED WITH HAND COMPASS WITH 18° EAST DECLINATION.

- | | |
|--|--|
| <p>1 SET STEEL FENCE POST WITH WITNESS SIGN BESIDE CORNER.</p> <p>2 SET STEEL FENCE POST N 81° W - 7.7' FROM CORNER.</p> <p>3 SET STEEL FENCE POST N 64° W - 9.0' FROM CORNER.</p> <p>4 SET STEEL FENCE POST S 61° E - 8.7' FROM CORNER.</p> <p>5 SET STEEL FENCE POST N 43° W - 8.2' FROM CORNER.</p> <p>6 SET STEEL FENCE POST N 14° E - 10.4' FROM CORNER.</p> <p>7 SET STEEL FENCE POST N 48° E - 16.7' FROM CORNER.</p> <p>8 SET STEEL FENCE POST S 07° E - 3.9' FROM CORNER.</p> <p>9 SET STEEL FENCE POST BESIDE CORNER.</p> <p>10 SET STEEL FENCE POST N 72° W - 19.3' FROM CORNER.</p> <p>11 SET STEEL FENCE POST N 54° W - 4.6' FROM CORNER.</p> <p>12 SET STEEL FENCE POST N 12° E - 7.1' FROM CORNER.</p> <p>13 SET STEEL FENCE POST N 14° W - 11.1' FROM CORNER.</p> <p>14 SET STEEL FENCE POST N 61° W - 8.9' FROM CORNER.</p> <p>15 SET STEEL FENCE POST N 61° W - 9.4' FROM CORNER.</p> <p>16 SET STEEL FENCE POST WITH WITNESS SIGN BESIDE CORNER.</p> <p>17 SET STEEL FENCE POST S 89° E - 11.0' FROM CORNER.</p> <p>18 SET STEEL FENCE POST N 88° E - 8.2' FROM CORNER.</p> <p>19 SET STEEL FENCE POST N 74° E - 10.0' FROM CORNER.</p> <p>20 SET STEEL FENCE POST S 82° E - 18.2' FROM CORNER.</p> | <p>21 CONTINUED FROM LEFT.....</p> <p>22 SET STEEL FENCE POST S 65° W - 11.5' FROM CORNER.</p> <p>23 SET STEEL FENCE POST N 53° E - 13.0' FROM CORNER.</p> <p>24 SET STEEL FENCE POST N 22° E - 7.9' FROM CORNER.</p> <p>25 SET STEEL FENCE POST S 01° E - 9.5' FROM CORNER.</p> <p>26 SET STEEL FENCE POST N 74° W - 11.4' FROM CORNER.</p> <p>27 SET STEEL FENCE POST N 17° W - 10.3' FROM CORNER.</p> <p>28 SET STEEL FENCE POST S 25° W - 14.0' FROM CORNER.</p> <p>29 SET STEEL FENCE POST N 25° E - 12.9' FROM CORNER.</p> <p>30 SET STEEL FENCE POST N 12° E - 18.7' FROM CORNER.</p> <p>31 SET STEEL FENCE POST N 12° E - 18.7' FROM CORNER.</p> <p>32 SET STEEL FENCE POST N 34° E - 8.0' FROM CORNER.</p> <p>33 SET STEEL FENCE POST N 12° E - 18.7' FROM CORNER.</p> <p>34 SET STEEL FENCE POST N 09° W - 14.8' FROM CORNER.</p> <p>35 SET WITNESS CORNER S 64°51'26" W, 10.00 FEET FROM TRUE CORNER POINT TO AVOID LARGE ROCK. SET STEEL FENCE POST N 18° W - 14.5' FROM WITNESS CORNER. MAP DIMENSIONS ARE TO TRUE CORNER POINT.</p> <p>36 SET STEEL FENCE POST N 48° E - 11.5' FROM CORNER.</p> <p>37 SET WITNESS CORNER N 89°15'52" E, 20.00 FEET FROM TRUE CORNER POINT TO AVOID LARGE ROCK. SET STEEL FENCE POST S 89° W - 3.7' FROM WITNESS CORNER. MAP DIMENSIONS ARE TO TRUE CORNER POINT.</p> |
|--|--|

LINE TABLE

NO.	BEARING	DISTANCE	(DEED RECORD DIMENSION)
L1	S 89°52'50" E	324.84'	(S 89°52'50" E 324.84')D
L2	N 22°45'20" E	125.45'	(N 22°45'20" E 125.45')D
L3	N 42°19'11" E	180.04'	(N 42°19'11" E 180.04')D
L4	N 16°47'20" E	149.40'	(N 16°47'20" E 149.40')D
L5	N 39°27'19" E	191.25'	(N 39°27'19" E 191.25')D
L6	S 31°40'22" E	692.53'	(S 31°40'22" E 692.53')D
L7	S 54°37'45" E	113.03'	(S 54°37'45" E 113.03')D
L8	N 44°08'09" E	177.53'	(N 44°08'09" E 177.53')D
L9	N 17°13'27" E	388.73'	(N 17°13'27" E 388.73')D
L10	N 21°41'59" E	552.05'	(N 21°41'59" E 552.05')D
L11	N 67°52'29" E	98.40'	(N 67°52'29" E 98.40')D
L12	S 67°13'20" E	277.78'	(S 67°13'20" E 277.78')D
L13	N 44°17'38" E	210.73'	(N 44°17'38" E 210.73')D
L14	N 09°42'20" E	327.90'	(N 09°42'20" E 327.90')D
L15	N 89°13'42" E	537.03'	(N 89°13'42" E 537.03')D
L16	S 01°34'08" E	99.06'	(S 01°34'08" E 99.06')D
L17	S 21°37'31" E	262.83'	(S 21°37'31" E 262.83')D
L18	S 07°55'13" W	165.63'	(S 07°55'13" W 165.63')D
L19	S 14°11'56" E	197.18'	(S 14°11'56" E 197.18')D
L20	S 27°06'55" E	185.16'	(S 27°06'55" E 185.16')D
L21	S 65°37'10" E	258.17'	(S 65°37'10" E 258.17')D
L22	S 79°38'14" E	228.84'	(S 79°38'14" E 228.84')D
L23	N 31°52'28" E	296.37'	(N 31°52'28" E 296.37')D
L24	N 35°37'39" E	408.88'	(N 35°37'39" E 408.88')D
L25	S 89°08'31" E	92.40'	(S 89°08'31" E 92.40')D
L26	S 49°04'00" E	323.17'	(S 49°04'00" E 323.17')D
L27	S 89°12'47" E	324.46'	(S 89°12'47" E 324.46')D
L28	S 72°19'33" E	268.62'	(S 72°19'33" E 268.62')D
L29	S 52°38'51" E	460.06'	(S 52°38'51" E 460.06')D
L30	S 74°57'39" E	133.73'	(S 74°57'39" E 133.73')D
L31	N 64°51'28" E	230.64'	(N 64°51'28" E 230.64')D
L32	S 70°39'36" E	255.67'	(S 70°39'36" E 255.67')D
L33	S 10°35'13" E	252.46'	(S 10°35'13" E 252.46')D
L34	N 20°27'41" E	53.44'	(N 20°27'41" E 53.44')D
L35	N 20°27'41" E	594.46'	(N 20°27'41" E 594.46')D
L36	N 88°58'43" W	391.31'	(N 88°58'43" W 391.31')D

LEGEND

- FOUND GLO CORNER MONUMENT AS NOTED.
- - OTHER MONUMENT FOUND AS NOTED.
- - FOUND 5/8" REBAR FROM SURVEY NO. 09-118-B.
- ◆ - SET 5/8" BY 24" REBAR WITH 1 1/4" RED PLASTIC CAP MARKED "OR PLS 1106 WA PLS 17372. NOTE: MANY OF THE MONUMENTS FALL IN ROCKY ROADS AND SEVERAL REBARS WERE SHORTENED TO SET FLUSH WITH THE ROAD SURFACE.
- ⊗ - INDICATES CALCULATED POINT ONLY, NOTHING SET OR FOUND.
- +—+—+ - INDICATES BOUNDARY LINE MARKED WITH STEEL FENCE POSTS SET AT RANDOM INTERVALS.
- - INDICATES ROAD, NOT ALL ROADS ARE SHOWN.
- (XOX) - RECORD DIMENSION FROM DEED RECORDED AS INST. NO. 2008-5460010.
- (XOX) - RECORD DIMENSION FROM SURVEY NO. 98-06-B.
- [XOX] - RECORD DIMENSION FROM G.L.O. SURVEY BY CURRIN & NOLAND UNDER SPECIAL CONTRACT DATED MAY 4, 1887.
- (XOX)1 - RECORD DIMENSION FROM SURVEY NO. 97-173-B.
- (XOX)2 - RECORD DIMENSION FROM SURVEY NO. 09-118-B.
- - INDICATES GENERAL LOCATION OF CORNER MONUMENT OF RECORD NOT VISITED ON THIS SURVEY.

NARRATIVE

THIS SURVEY WAS MADE AT THE REQUEST OF RUSS STRANDHOLM. THE PURPOSE OF THE SURVEY WAS TO LOCATE A PORTIONS OF THE STRANDHOLM OWNERSHIP IN SECTIONS 1, 2 AND 3 IN T1S., R34E., W.M. THE SURVEY WAS MADE WITH REFERENCE TO DEED DESCRIPTIONS CONTAINED IN DEED RECORDED AS INSTRUMENT NO. 2008-5460010, OFFICE OF RECORDS, WHERE THE STRANDHOLM DESCRIPTION LINES TERMINATE OR BEGIN ON SECTION OR SECTION BREAKDOWN LINES, I HAVE HELD THE RECORD DEED COURSES TO THE EXTENT POSSIBLE AND CALCULATED CLOSING DISTANCES PER THE DEED CALLS, TO MEASURED CONTROLLING LINES.

REFERENCE SURVEYS AND CONTROLLING CORNERS ARE NOTED ON THIS RECORD OF SURVEY. WE DID NOT VISIT OR TIE MONUMENTS FOR SENIOR CORNERS OF SECTIONS 35 AND 36 ON THE BASE LINE UNLESS SHOWN.

THE SURVEY WAS MADE WITH A 2 PERSON CREW USING TRIMBLE 5700 GEODETIC GPS RECEIVERS OPERATED IN STATIC AND REAL TIME KINEMATIC MODES. IN TREE COVERED AREAS WHERE GPS COULD NOT BE USED, TRAVERSES WERE RUN BETWEEN GPS CONTROL TIES WITH A LEICA TOR 803, 3 SECOND TOTAL STATION. MARKING OF LINES WITH STEEL POSTS WAS DONE BY OFFSETTING FROM TRAVERSE POINTS TO TRUE LINE WITH A COMPASS AND STEEL TAPE.

SOUTH 1/4 CORNER OF SECTION 3.
FOUND 2 7/8" BRASS CAP ON GALV. IRON PIPE AS REPORTED ON SURVEY NO. 97-173-B.

REGISTERED PROFESSIONAL LAND SURVEYOR <i>William R. Wells</i> OREGON JULY 22, 1977 WILLIAM R. WELLS 1106 RENEWS 6/30/10	WELLS SURVEYING 2602 N.E. RIVERSIDE PLACE P.O. BOX 1696 PENDELTON, OREGON PHONE: (541) 276-6362	PROJECT: SURVEY FOR: RUSS STRANDHOLM
	DATE: 04/10 CK. BY: WRW	DR. BY: JMW NO: 09-1248