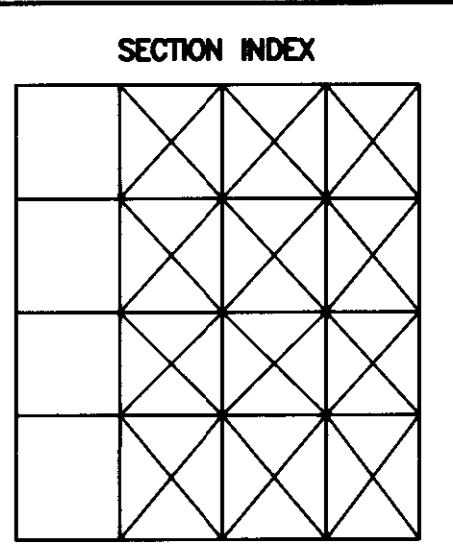


Date Stamped: 2/20/2012



- 621 W. Mallon Ave, Suite 309, Spokane, WA 99201 (509) 328-5139 (509) 328-0423
 - 313 D Street, Suite 200, Lewiston, Idaho 83501 (208) 746-2661 (208) 746-6825
 - ☒ 5 North Colville, Walla Walla, WA 99362 (509) 522-4843 (509) 522-1902
- www.uskh.com

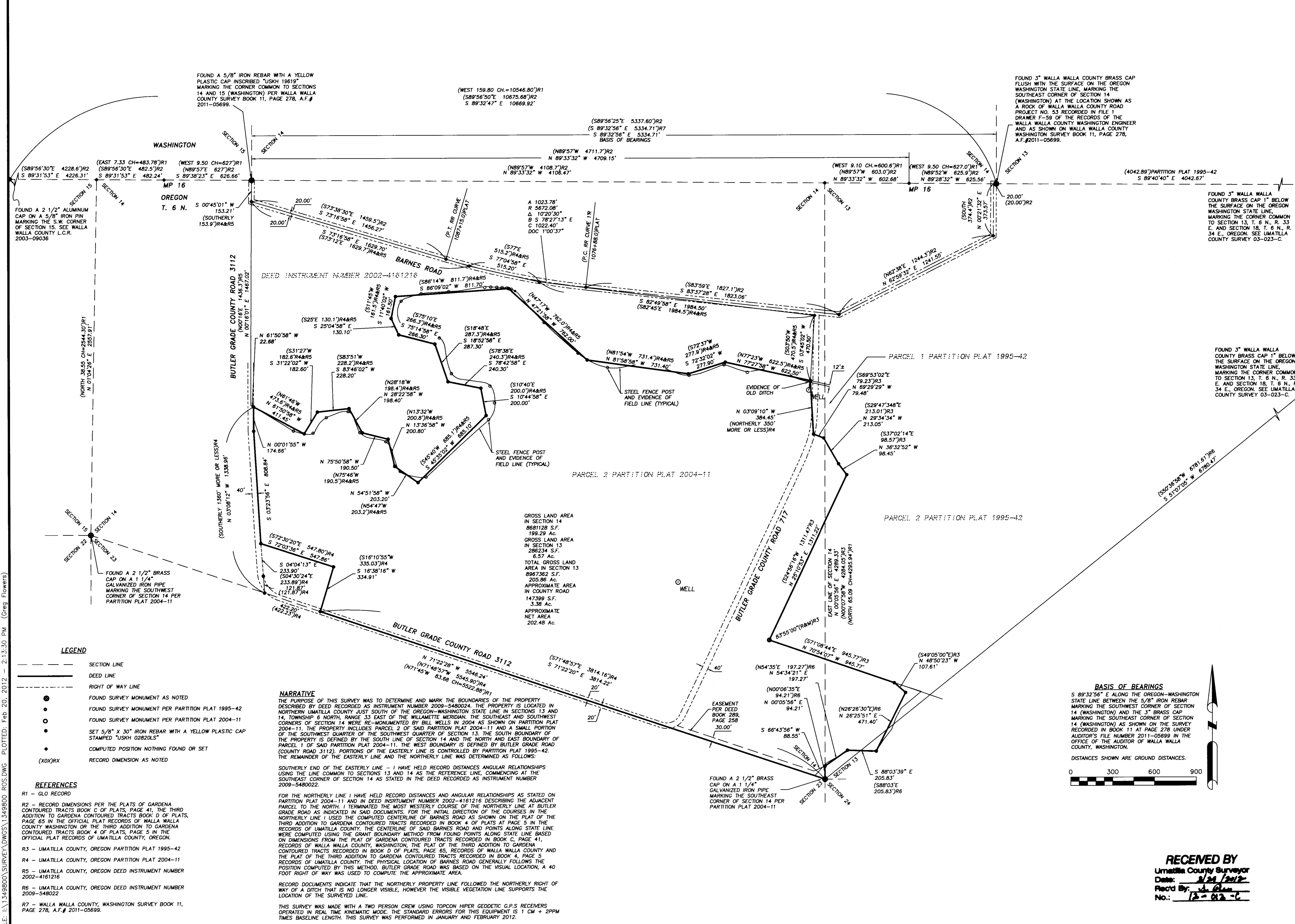
PROJECT A SURVEY LOCATED IN LOTS 1, 2, 3, 6, 7, 8, 9, 10 AND 11 OF SECTION 14, AND THE SW 1/4 OF SECTION 13, TOWNSHIP 6 NORTH, RANGE 33 EAST, WILLAMETTE MERIDIAN, UMATILLA COUNTY, OREGON.
 CLIENT KREGGER RANCHES 17232 STATELINE ROAD TOUCHET, WA 99360



SEC 14, TWN. 6 N. RNG 33 E.W.M.

Project Mgr.	GREG E. FLOWERS
Drawn	GEF
Checked	GEF
	2-08-12

CAD File	1349800_ROS.DWG
Sheet Contents:	RECORD OF SURVEY
Sheet No.:	
USKH W.O.	1349800



FILE: I:\1349800\SURVEY\DWGS\1349800_ROS.DWG PLOTTED: Feb 20, 2012 - 2:13:30 PM (Greg Flowers)