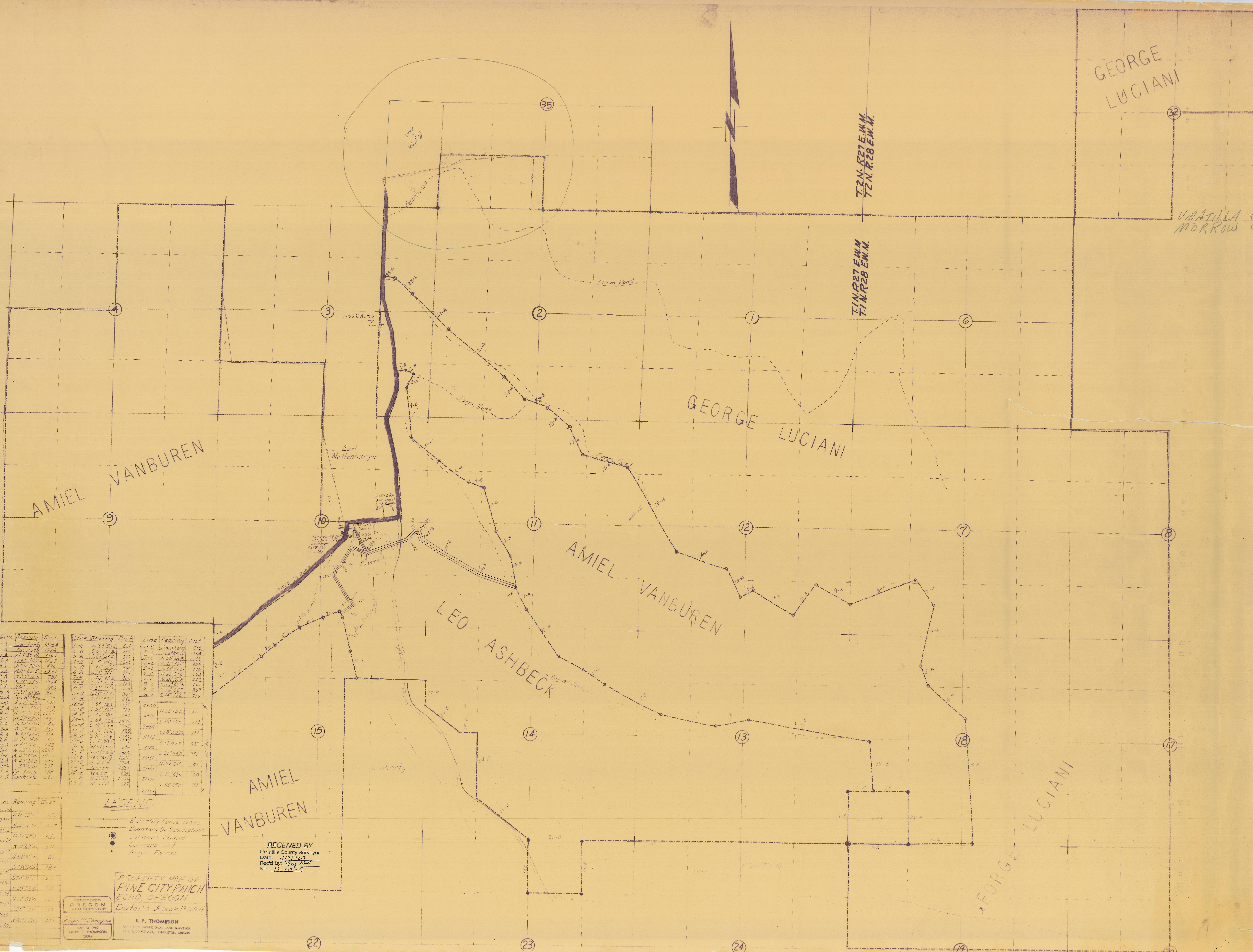


GEORGE LUCIANI

UMATILLA Co.
MORROW Co.

T2N. R27E. M1M
T2N. R28E. W1M.

T1N. R27E. E1M. M
T1N. R28E. E1M. M.



Line Bearing	Dist	Line Bearing	Dist	Line Bearing	Dist
1-A	Easterly	158.4	1-B	N 34° 52'	241
2-A	Easterly	177.8	2-C	S 87° 27'	594
3-A	N 4° 30' W	316.2	3-B	S 27° 50' W	377
4-A	N 51° 24' W	166.7	4-B	S 7° 05' E	128.7
5-A	N 20° 38' W	47.4	5-C	S 81° 12' E	89.2
6-A	N 12° 22' E	12.10	6-B	S 83° 08' E	40.6
7-A	N 23° 20' W	78.7	7-C	S 72° 42' E	40.6
8-A	S 27° 22' W	174.1	8-C	S 13° 52' E	173.3
9-A	N 61° 01' W	15.4	9-B	S 67° 15' E	102.2
10-A	S 34° 21' W	76.7	10-C	S 13° 17' E	80.2
11-A	N 52° 34' W	11.8	11-B	S 21° 15' E	64.2
12-A	S 2° 52' W	72.2	12-C	S 33° 18' E	127.7
13-A	N 83° 00' W	70.7	13-C	S 62° 40' E	72.4
14-A	N 70° 55' W	151.7	14-B	S 58° 09' E	147
15-A	N 2° 24' W	24.6	15-C	S 84° 30' E	152.2
16-A	N 75° 22' W	4.8	16-C	S 78° 22' E	17.2
17-A	N 20° 41' W	161	17-C	N 70° 14' E	89.3
18-A	N 44° 38' W	73.3	18-C	S 8° 15' E	314.4
19-A	N 70° 34' W	64.0	19-C	S 7° 58' E	241
20-A	N 4° 17' W	74.2	20-B	Westerly	64
21-A	N 25° 13' W	124.5	21-E	Westerly	130
22-A	N 37° 51' W	121.9	22-C	Westerly	131
23-A	N 43° 32' W	59.6	23-C	N 55° 3'	115.5
24-A	N 88° 10' W	27	24-E	North	152
25-A	E 100' W	158	25-E	West	71.2
26-A	South	15.0	26-E	N 52° 11'	105.4
27-A	South	15.0	27-B	North	47
			27-C	North	224.7

LEGEND

- Existing Force Lines
- Boundary Or Descriptions
- Corners Found
- Corners Not
- Angle Points

RECEIVED BY
Umatilla County Surveyor
Date: 11/17/2013
Recd By: Way
No: 13-013-C

PROPERTY MAP OF
PINE CITY RANGE
ECHO, OREGON
Date: 3-3-18 Scale: 1"=400'

REGISTERED
OREGON
LAND SURVEYOR
E. P. THOMPSON
1111 S. 10th
ECHO, OREGON