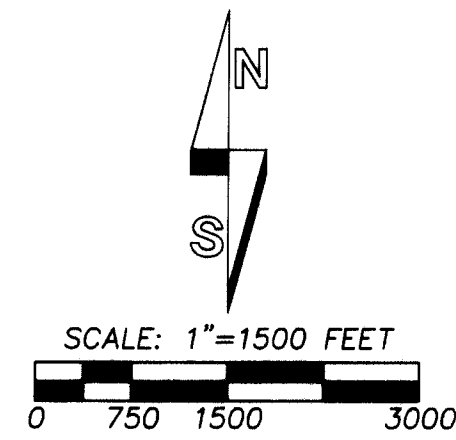


RECORD OF SURVEY SHEET 1 OF 2



"BASIS OF BEARINGS" AND SCALE/ELEVATION FACTORS:
MAP BEARINGS ARE OREGON STATE PLANE GRID BEARINGS. THE CONVERGENCE ANGLE IS 11'20" AT THE SOUTHEAST CORNER OF SECTION 28. ROTATE GRID BEARINGS 11'20" CLOCKWISE TO ARRIVE AT APPROXIMATE TRUE BEARINGS FOR THE PROJECT. MAP DISTANCES ARE OREGON STATE PLANE GRID DISTANCES. THE COMBINED SCALE AND ELEVATION FACTOR FOR CONVERTING MAP GRID DISTANCES TO GROUND DISTANCES IS 1.000130411. THIS FACTOR IS BASED ON A MEAN PROJECT ELEVATION OF 1501 FEET.

LAND CORNER RECORD FORMS

LAND CORNER RECORD FORMS FILED CONCURRENTLY WITH THIS SURVEY CONTAIN EXPLANATIONS, HISTORIES AND METHODS OF RE-ESTABLISHMENT AND REMONUMENTATION FOR CORNERS VISITED ON THIS SURVEY. CONSULT LAND CORNER RECORDS FOR SPECIFIC INFORMATION ON EACH CORNER. OREGON STATE PLANE COORDINATES, NORTH ZONE, NAD 83(91) ARE REPORTED ON LAND CORNER RECORD FORMS.

NARRATIVE:

THE PURPOSE OF THIS SURVEY WAS TO RECOVER OR REESTABLISH CERTAIN SECTION AND ONE-QUARTER SECTION CORNERS IN TOWNSHIP 3 NORTH, RANGE 32 EAST, W.M. THE WORK WAS AUTHORIZED BY THE UMATILLA COUNTY SURVEYOR AND BOARD OF COUNTY COMMISSIONERS AND FUNDED BY THE PUBLIC LAND CORNER MONUMENT FUND. PORTIONS OF THE EAST, SOUTH AND WEST BOUNDARIES OF THE TOWNSHIP HAVE BEEN RETRACED AND CORNERS REMONUMENTED OR REESTABLISHED UNDER PREVIOUS COUNTY REMONUMENTATION CONTRACTS.

ORIGINAL GLO SURVEYS IN THE PROJECT AREA WERE MADE BETWEEN 1861 AND 1864. NEARLY ALL CORNERS WERE ESTABLISHED AS WOOD POSTS, WITH CHARRED STAKES, TRENCHES ETC. A FEW STONES WERE SET FOR CORNERS IN THE SUBDIVISION OF THE TOWNSHIP AND LATER RETRACEMENT AND REESTABLISHMENT SURVEYS MADE BY EARLY COUNTY SURVEYORS USED STONES TO MARK CORNERS IN SOME SITUATIONS. IN FARMED AREAS, MOST FENCES HAVE BEEN REMOVED, BUT EVIDENCE OF OLD FENCES, SUCH AS FIELD BERMS OR FIELD LINES, STILL EXIST, AND WERE UTILIZED TO THE EXTENT POSSIBLE IN REESTABLISHING CORNERS ON THIS SURVEY.

IN MAKING THIS SURVEY WE UTILIZED UMATILLA COUNTY'S RECTIFIED COLOR IMAGERY, ON THE OREGON STATE PLANE COORDINATE SYSTEM, TO IDENTIFY POTENTIAL CORNER SEARCH AREAS BASED ON FIELD LINES, ROADS, FENCES, ETC. DETAILED SEARCH AREAS WERE IDENTIFIED USING GPS MEASUREMENTS TO THE POSSESSORY LINES SUCH AS FIELD AND FENCE LINES, OLD FIELD BERMS AND ROADS. WE CONSULTED ALL OLD COUNTY ROAD NOTES IN THE AREA FOR REFERENCES TO ORIGINAL CORNERS. WE ALSO CONSULTED STATE HIGHWAY MAPS AND NATURAL GAS TRANSMISSION LINE MAPS FOR CORNER TIES. ALL RECORD SURVEYS FOUND IN COUNTY SURVEYOR OFFICE RECORDS, INCLUDING SURVEYS REPORTED IN RECORD OF PRIVATE SURVEYS, BOOKS 1 AND 2 WERE CONSULTED. WE ALSO UTILIZED 1956(AND LATER), AERIAL PHOTOGRAPHY BY THE USDA FARM SERVICE AGENCY TO IDENTIFY HISTORIC FARMED LINES NEAR THE SECTION LINES TO BE LOCATED.

NARRATIVE, CONTINUED:

LAND CORNER RECORD FORMS, FILED CONCURRENTLY WITH THIS SURVEY, SHOULD BE CONSULTED FOR INFORMATION ON EACH CORNER RECOVERED OR REESTABLISHED AND THE ACCESSORIES PLACED TO REFERENCE THE CORNER MONUMENT. ON THE RECORD OF SURVEY MAPS AND LAND CORNER RECORDS, WE REPORTED ONLY THOSE RECORDS PERTINENT TO RECOVERY OR REESTABLISHMENT OF THE CORNERS. IN FARMED AREAS, WE BURIED MOST CORNER MONUMENTS BELOW THE SURFACE OF THE GROUND, TO AVOID DISTURBANCE BY FARM OPERATIONS. CORNER ACCESSORY TIES WERE MEASURED WITH A STEEL TAPE AND COMPASS.

GPS SURVEY MEASUREMENTS WERE MADE WITH A TRIMBLE R8 GEODETIC GPS RECEIVER WITH CORRECTIONS FROM THE OREGON REAL-TIME GPS NETWORK, (ORGN), WHEN WE BEGAN PROJECT SURVEYING IN JULY, 2012. CORRECTED COORDINATES FROM ORGN WERE ON THE DATUM REALIZATION OF NAD83 (COR598)(EPOCH:2002.00). IN MARCH OF 2013, THE ORGN DATUM REALIZATION CHANGED TO NAD83 (2011)(EPOCH:2010.00). UMATILLA COUNTY WANTS THE STATE PLANE COORDINATES REPORTED ON NAD83, ADJUSTMENT OF 1991. EACH OF THESE REALIZATIONS HAVE COORDINATE VALUES DIFFERING BY 6-8 CENTIMETERS IN THE PROJECT AREA. WE KEPT TRACK OF GPS MEASUREMENTS MADE IN THE TWO MOST RECENT DATUM REALIZATIONS, AND COMPILED THE PROJECT BASE MAP ON THE REALIZATION OF NAD83 (2011)(EPOCH:2010.00). AFTER PROJECT MEASUREMENTS WERE COMPLETED, PROJECT COORDINATES WERE GLOBALLY SHIFTED TO THE NAD83(91) POSITION OF STATION "PENDLETON", PID R81366, THE SHIFT FROM NAD83 (2011)(EPOCH:2010.00) TO NAD83(91) AT STATION PENDLETON IS S 02'49" W, 0.21'.

BECAUSE OF THE GLOBAL COORDINATE SHIFT AND USE OF THE ORGN RATHER THAN GROUND BASED MONUMENTS FOR CONTROL, THERE WILL BE SOME DIFFERENCES BETWEEN NAD83(91) COORDINATES REPORTED ON EARLIER PROJECTS AND THOSE REPORTED ON THE CURRENT PROJECT.

RECOVERED CORNERS, CONTROLLING CORNERS AND REESTABLISHED CORNER POSITIONS WERE TIED OR SET USING REAL TIME KINEMATIC METHODS AND VERIFIED BY SEPARATE OBSERVATIONS.

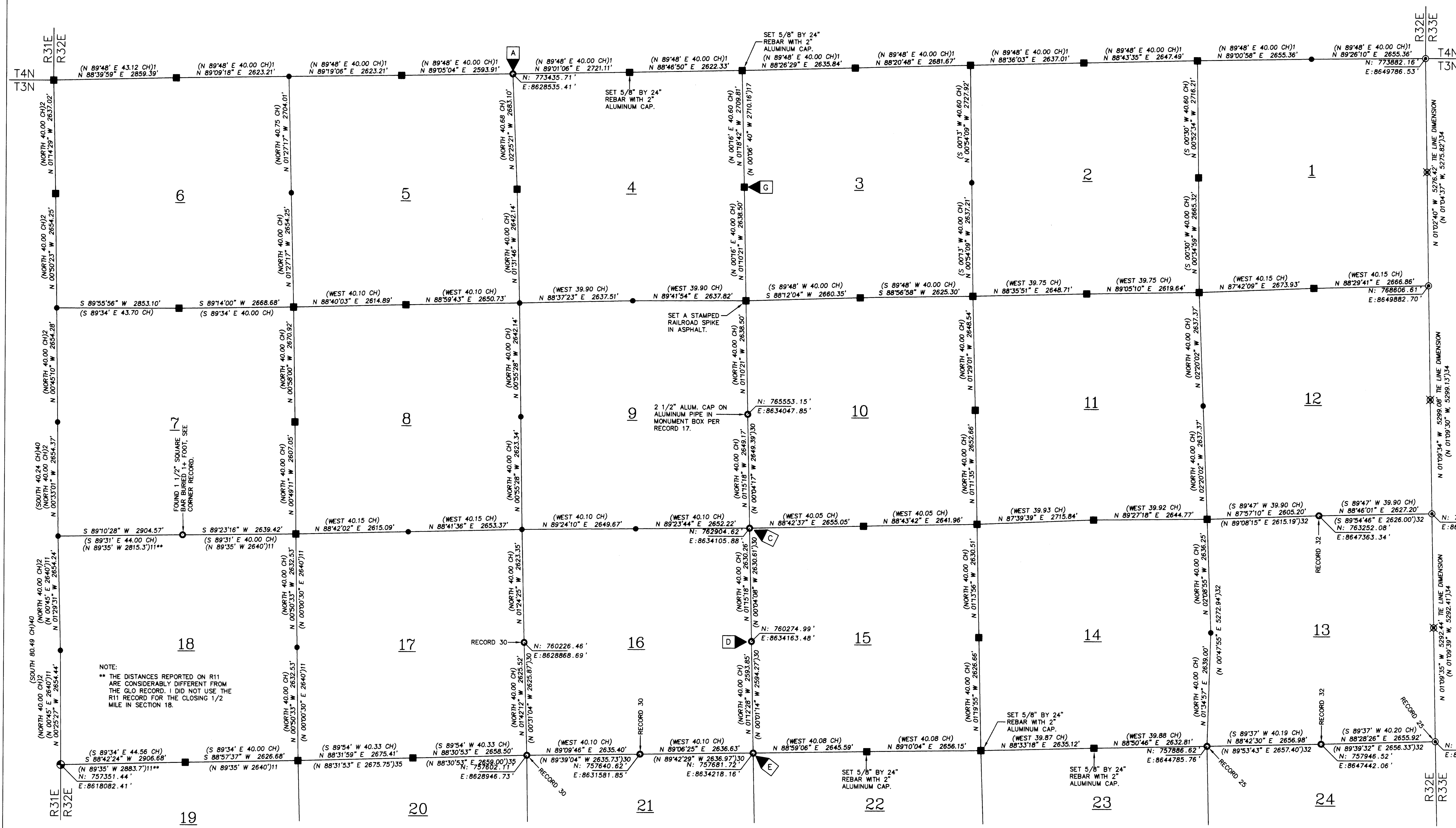
LEGEND

- - REESTABLISHED CORNER AND MONUMENTED WITH A 2 3/8" BRASS CAP ON 1 1/4" BY 30" GALVANIZED IRON PIPE, UNLESS OTHERWISE NOTED. SEE CORNER RECORD FILED CONCURRENTLY WITH THIS SURVEY.
- - FOUND AND ACCEPTED EVIDENCE OF CORNER AND REMONUMENTED WITH A 2 3/8" BRASS CAP ON 1 1/4" BY 30" GALVANIZED IRON PIPE UNLESS OTHERWISE NOTED. SEE CORNER RECORD FILED CONCURRENTLY WITH THIS SURVEY.
- ⊕ - FOUND 2 3/8" BRASS CAP ON IRON PIPE MONUMENT OF RECORD FROM S.N. 06-462-C UNLESS OTHERWISE NOTED.
- ⊗ - 2 3/8" BRASS CAP ON IRON PIPE MONUMENT OF RECORD FROM S.N. 06-462-C, NOT VISITED ON THIS SURVEY.
- ⊙ - FOUND 2 3/8" BRASS CAP ON IRON PIPE MONUMENT OF RECORD SET OR REFERRED TO ON S.N. 88-19-C UNLESS OTHERWISE NOTED.
- ⊘ - 2 3/8" BRASS CAP ON IRON PIPE MONUMENT OF RECORD SET OR REFERRED TO ON S.N. 88-19-C UNLESS OTHERWISE NOTED.
- ⊚ - FOUND 2 3/8" BRASS CAP ON IRON PIPE MONUMENT OF RECORD SET OR REFERRED TO ON S.N. 12-094-C UNLESS OTHERWISE NOTED.
- ⊛ - ONE-QUARTER CORNER MONUMENT OF RECORD FROM S.N. 12-094-C. NOT VISITED ON THIS SURVEY.
- ◆ - FOUND 3 1/4" ALUMINUM CAP ON ALUMINUM PIPE OF RECORD FROM S.N. 12-126-B.
- ⊖ - OTHER MONUMENT FOUND, AS NOTED. MONUMENTS ARE 2 1/4", 2 1/2" OR 2 3/8" BRASS CAPS ON GALV. IRON PIPES UNLESS OTHERWISE NOTED.
- CH - INDICATES SURVEY CHAIN. 1 CHAIN EQUALS 66 FEET.
- S.N. - INDICATES SURVEY NUMBER OF SURVEY RECORDED AT UMATILLA COUNTY SURVEYORS OFFICE.
- R.P.S. - INDICATES "RECORD OF PRIVATE SURVEY" BOOK, FOUND IN COUNTY SURVEYORS OFFICE.
- N: 742038.96'
E: 8645120.09' - INDICATES OBSERVED COORDINATE VALUE OR COORDINATE VALUE CALCULATED FROM PREVIOUS GPS SURVEY TIES.
- (XOX) - RECORD DIMENSION FROM ORIGINAL GLO SURVEY BY DAVID CHAPLIN, UNDER CONTRACT NO. 107, DATED SEPTEMBER 21, 1864.
- (XOX1) - RECORD DIMENSION FROM ORIGINAL GLO SURVEY BY DAVID P. THOMPSON, UNDER CONTRACT NO. 106, DATED AUGUST 1, 1864.
- (XOX2) - RECORD DIMENSION FROM ORIGINAL GLO SURVEY BY D.S. PAYNE, UNDER CONTRACT NO. 100, DATED AUGUST 1, 1861.
- (XOX11) - RECORD DIMENSION FROM SURVEY NO. 0-521-C, HAYES, NO DATE.
- (XOX17) - RECORD DIMENSION FROM SURVEY NO. 88-18-B, B. WELLS, 1888.
- (XOX18) - RECORD DIMENSION FROM SURVEY NO. 88-19-C, B. WELLS, 1888.
- (XOX21) - RECORD DIMENSION FROM SURVEY NO. 89-123-B, ODMAN, 1989.
- (XOX26) - RECORD DIMENSION FROM SURVEY NO. 97-172-B, D. HADDOCK, 1997.
- (XOX29) - RECORD DIMENSION FROM SURVEY NO. 01-144-C, B. WELLS, 2001.
- (XOX30) - RECORD DIMENSION FROM SURVEY NO. 04-114-B, B. WELLS, 2004.
- (XOX31) - RECORD DIMENSION FROM SURVEY NO. 06-462-C, B. WELLS, 2006.
- (XOX32) - RECORD DIMENSION FROM SURVEY NO. 06-606-C, S. HADDOCK, 2006.
- (XOX34) - RECORD DIMENSION FROM SURVEY NO. 12-094-C, ENGLISH, 2012.
- (XOX35) - RECORD DIMENSION FROM SURVEY NO. 12-126-B, SHEA, 2012.
- (XOX38) - RECORD DIMENSION FROM R.P.S. BOOK 1, PAGE 580, J. KIMBRELL, 1906.
- (XOX39) - RECORD DIMENSION FROM R.P.S. BOOK 2, PAGE 288, BRADLEY, 1916.
- (XOX40) - RECORD DIMENSION FROM R.P.S. BOOK 1, PAGE 424, J. KIMBRELL, 1900.

OTHER NOTES:

- STAEBLER SET A 3/4" IRON PIPE HERE IN 1968, PER SURVEY NO. 04-114-B & STATE CORNER S AS A "TEMPORARY SECTION CORNER". NO EXPLANATION OF ITS ESTABLISHMENT IS GIVEN. TOMKINS FOUND A 3/4" PIN, ACCEPTED IT AS THE SECTION CORNER AND MONUMENTED WITH A 2 1/2" BRASS CAP IN CONCRETE IN SURVEY NO. 03-023-C. MONUMENT APPEARS TO BE ABOUT 60 FEET TOO FAR WEST, BASED ON ADJACENT REESTABLISHED CORNER POSITIONS. THIS MONUMENT WAS NOT HELD IN REESTABLISHING ANY ADJACENT CORNERS.
- THE MONUMENT PER SURVEY NO. 06-462-C WAS DESTROYED BY BARNHART ROAD CONSTRUCTION AND WAS REMONUMENTED WITH A 5/8" BY 30" COPPER CLAD STEEL ROD UNDER RECORD 10-23-R.
- THE 2 1/2" BRASS CAP ON GALV. IRON PIPE MONUMENT PER SURVEY NO. 04-114-B IS A WITNESS MONUMENT WHICH BEARS N 88°47'59" E, 23.00' FROM TRUE CORNER POINT IN HIGHWAY 37.
- THE 2 1/2" BRASS CAP ON GALV. IRON PIPE MONUMENT PER SURVEY NO. 04-114-B IS A WITNESS MONUMENT WHICH BEARS S 89°28'30" W, 35.00' FROM TRUE CORNER POINT IN HIGHWAY 37.
- THIS MONUMENT IS A 2 1/2" BRASS CAP SET FLUSH IN CONCRETE IN THE RUNWAY OF THE AIRPORT. NO RECORD WAS FOUND. THE BRASS CAP IS FULLY MARKED AS THE 1/4 CORNER AND WAS SET IN 1999 BY RANDY SCOTT, PLS 2285. WE SPOKE WITH RANDY SCOTT AND HE STATED HE DID CONSTRUCTION STAKING IN 1999 AND THAT HE WOULD ONLY RESET THE MONUMENT IF THERE WAS SOMETHING MONUMENTING THE POSITION PRIOR TO RUNWAY RECONSTRUCTION. MR. SCOTT COULD NOT PROVIDE DETAILS OF WHAT WAS REMONUMENTED. WE INQUIRED WITH CITY OF PENDLETON AND THE CITY WAS NOT ABLE TO PROVIDE ANY INFORMATION. I ACCEPT THIS BRASS CAP AS BEST EVIDENCE OF THE CORNER. THE POSITION WAS LIKELY PERPETUATED IN THE 1940S BY THE ARMY WHEN THE PENDLETON AIR BASE WAS CONSTRUCTED DURING WORLD WAR II.
- THE 2 1/2" BRASS CAP ON GALV. IRON PIPE MONUMENT SET IS A WITNESS MONUMENT WHICH BEARS N 88°41'16" E, 30.00' FROM THE TRUE CORNER POINT IN HIGHWAY 37.
- MONUMENTS AT THE NORTH 1/4 CORNERS OF SECTIONS 16 AND 17 WERE ESTABLISHED ON STRAIGHT LINES BETWEEN THEIR RESPECTIVE NE AND NW SECTION CORNERS. DIMENSIONS SHOWN ON THIS MAP ARE TO THE 1/4 CORNER POSITION ON THE LATITUDINAL ARC.

RECEIVED BY
Umatilla County Surveyor
Date: 10/23/2013
Rec'd By: *Yany Fan*
No.: 13-529-C



NOTE:
** THE DISTANCES REPORTED ON R11 ARE CONSIDERABLY DIFFERENT FROM THE GLO RECORD. I DID NOT USE THE R11 RECORD FOR THE CLOSING 1/2 MILE IN SECTION 18.

REGISTERED
PROFESSIONAL
LAND SURVEYOR
Jason M. Wells
OREGON
NOVEMBER 29, 2010
JASON M. WELLS
S4657PLS
RENEWS 6/30/14

| | | | |
|-----------------------------------------------------------------------------------------|-----------------|---------------------------------------------------------------------------------|--|
| WELLS SURVEYING | | PROJECT: | |
| 1 SW NYE AVENUE, SUITE B P.O. BOX 1696 PENDLETON, OREGON PHONE: (541) 276-6362 | | SURVEY FOR: UMATILLA COUNTY | |
| DATE: 07/13 | DR. BY: DMT/WRW | LOCATED IN TOWNSHIP 3 NORTH, RANGE 32 EAST, W.M. UMATILLA COUNTY, OREGON. | |
| CK. BY: JMW | NO: 13-1441 | | |

SEE SHEET 2 OF 2 FOR SOUTH HALF OF T3N., R32E., W.M.

