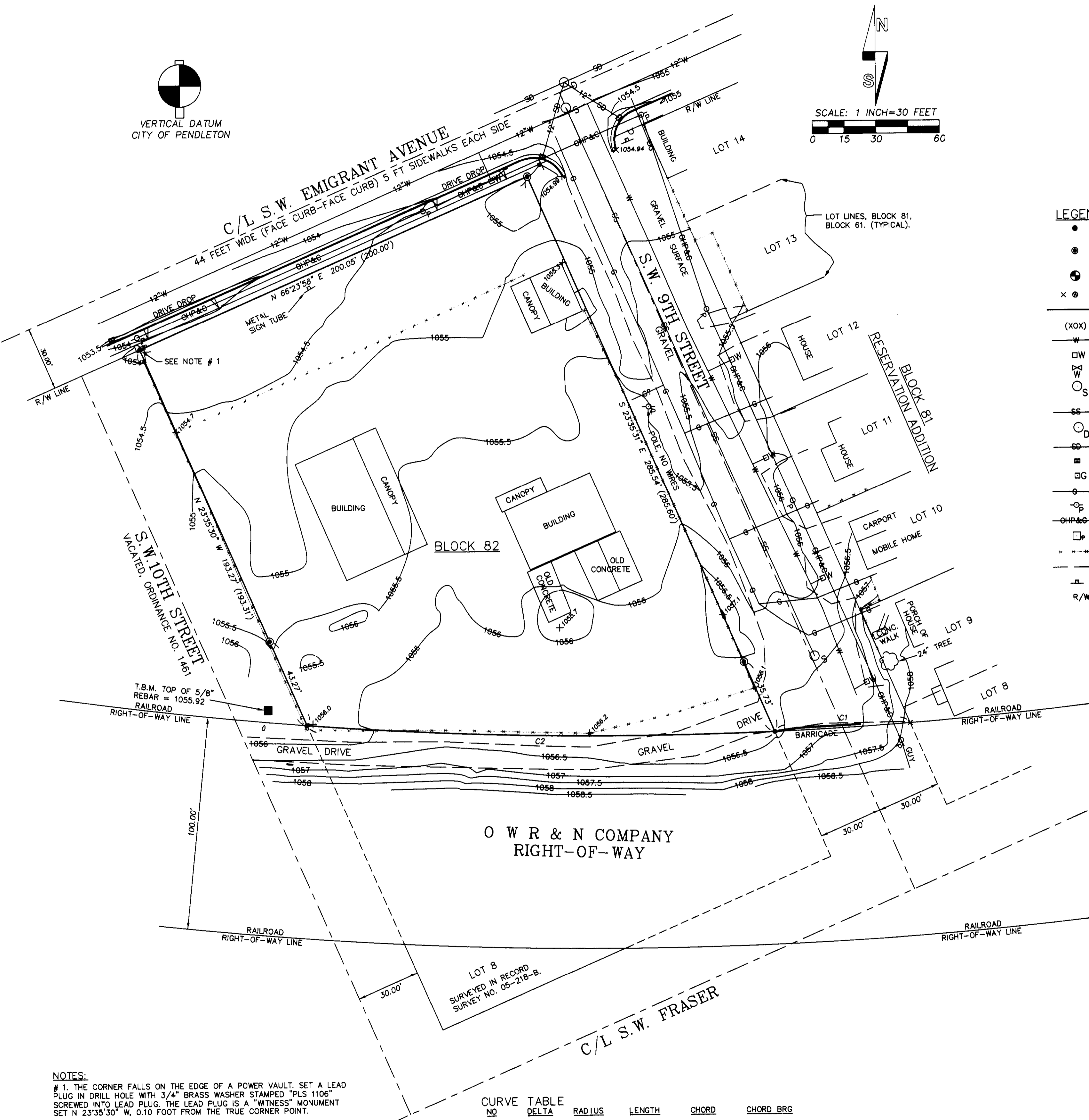
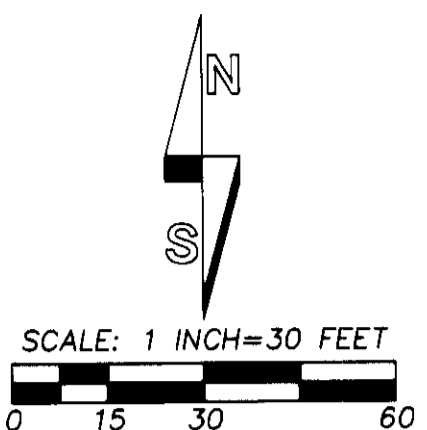
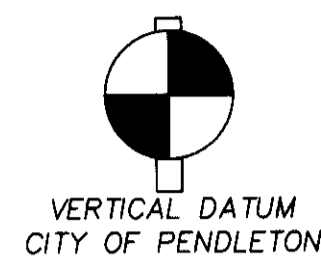
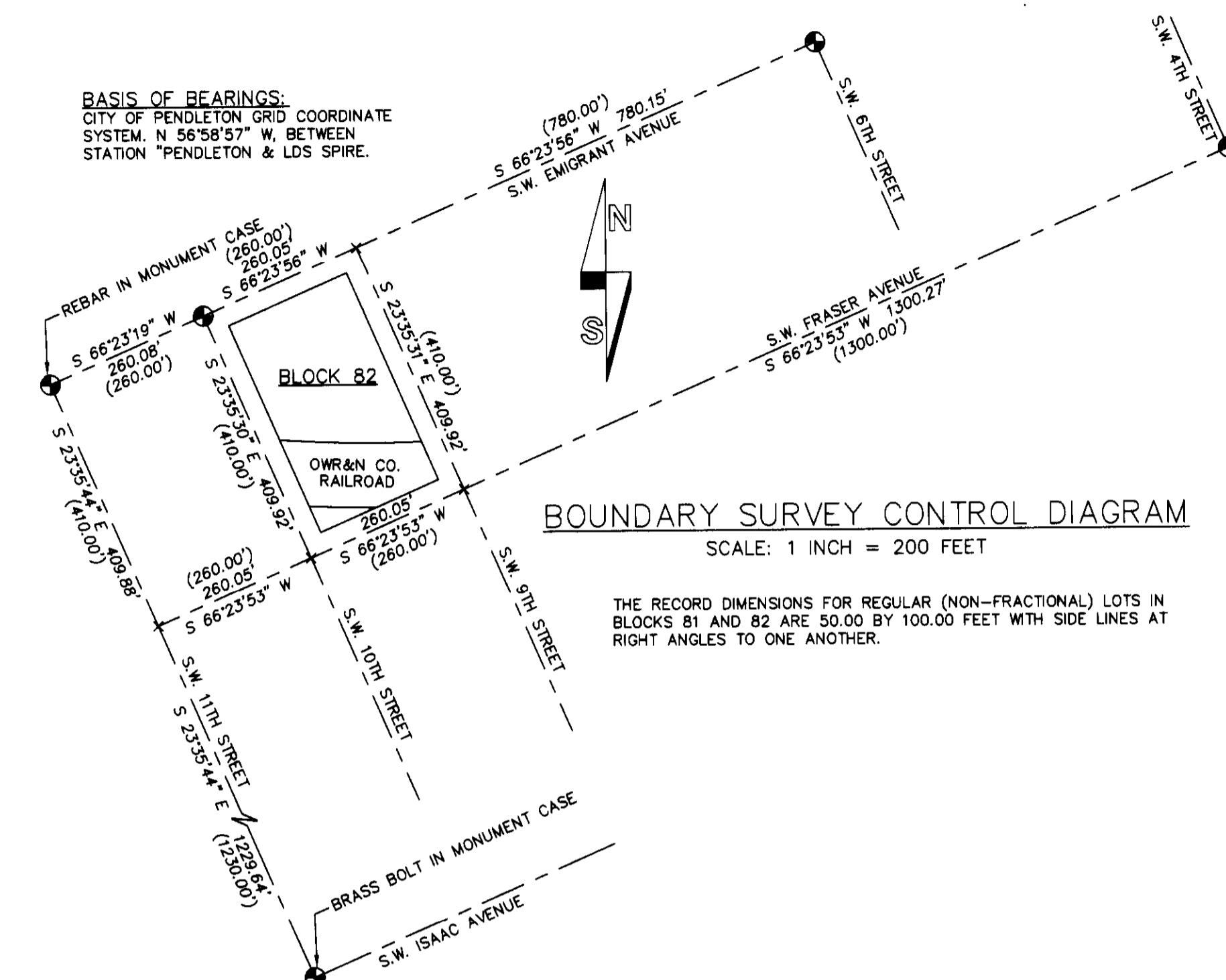


RECORD OF SURVEY



BASIS OF BEARINGS:
CITY OF PENDLETON GRID COORDINATE SYSTEM, N 56°58'57" W, BETWEEN STATION "PENDLETON & LDS SPIRE."



THE RECORD DIMENSIONS FOR REGULAR (NON-FRACTIONAL) LOTS IN BLOCKS 81 AND 82 ARE 50.00 BY 100.00 FEET WITH SIDE LINES AT RIGHT ANGLES TO ONE ANOTHER.

- LEGEND**
- - SET 5/8" BY 24" IRON REBAR WITH 1 1/4" RED PLASTIC CAP MARKED FOR PLS 1106 WA PLS 17372" UNLESS OTHERWISE NOTED.
 - ⊙ - FOUND 5/8" REBAR WITH 1 1/4" RED PLASTIC CAP PER UNRECORDED SURVEY BY TOM FROST, 2002. UNSTAMPED COPY FURNISHED BY DUSTY PACE.
 - ⊙ - CITY BRASS CAP IN MONUMENT CASE UNLESS OTHERWISE NOTED.
 - ⊙ - CALCULATED POINT ONLY, NOT SET OR FOUND.
 - - OVERALL PROPERTY LINE, PORTION OF BLOCK 82 NORTH OF RAILROAD.
 - (XOX) - INDICATES RECORD DIMENSION FROM THE PLAT OF RESERVE (RESERVATION) ADDITION.
 - - WATER LINE.
 - ⊙ - WATER METER.
 - ⊙ - WATER VALVE.
 - ⊙ - SANITARY SEWER MANHOLE. INVERTS WERE NOT OBSERVED BECAUSE THE LINE IN S.W. 9TH IS TO BE REPLACED.
 - - SANITARY SEWER LINE, TO BE REPLACED.
 - ⊙ - STORM SEWER MANHOLE.
 - - STORM SEWER LINE.
 - ⊙ - STORM DRAIN GRATE.
 - ⊙ - GAS METER.
 - ⊙ - BURIED NATURAL GAS LINE.
 - ⊙ - POWER POLE.
 - - OVERHEAD POWER AND COMMUNICATION LINES.
 - ⊙ - BURIED POWER VAULT.
 - - EXISTING FENCE.
 - - EDGE OF GRAVEL.
 - - TRAFFIC SIGN.
 - R/W - INDICATES RIGHT-OF-WAY.

NARRATIVE

THIS SURVEY WAS MADE AT THE REQUEST OF DUSTY PACE AND VAN VOORHIES. THE PURPOSE OF THE SURVEY WAS TO MEASURE AND MAP TOPOGRAPHIC FEATURES IN BLOCK 82 OF RESERVATION ADDITION AND S.W. 9TH STREET BETWEEN S.W. EMIGRANT AVENUE AND THE RAILROAD. UTILITIES IN S.W. EMIGRANT AVENUE AND S.W. 9TH STREET WERE TIED AND MAPPED BASED ON A UTILITY LOCATE ORDERED BY OTHERS. TOPOGRAPHY WITHIN BLOCK 82 WILL BE USED FOR NEW CONSTRUCTION ON BLOCK 82. UTILITIES AND TOPOGRAPHY IN S.W. 9TH STREET WILL BE UTILIZED FOR FUTURE LID IMPROVEMENTS IN S.W. 9TH. THE SURVEY REQUIRED LOCATION OF THE BOUNDARIES OF BLOCK 82 BETWEEN S.W. EMIGRANT AVENUE AND THE RAILROAD. THE EXISTING RESERVATION ADDITION LOTS IN THE PORTION OF BLOCK 82 NORTH OF THE RAILROAD ARE TO BE VACATED BY REPLAT AND ARE NOT SHOWN.

THE MONUMENTS USED TO LOCATE BLOCK 82 ARE SHOWN IN THE CONTROL DIAGRAM ON THIS RECORD OF SURVEY. DUSTY PACE FURNISHED A COPY OF AN UNSTAMPED, UNRECORDED SURVEY MAP IN BLOCK 82 DONE BY TOM FROST IN 2002. I FOUND THREE OF THE FOUR MONUMENTS INDICATED AS SET ON THE FROST MAP. I HELD THE FROST MONUMENT AT THE NORTHEAST CORNER OF BLOCK 82 ON THIS SURVEY AND NOTED THE LOCATION ON THE OTHER TWO MONUMENTS FOUND.

THE PORTION OF BLOCK 82 NORTH OF THE RAILROAD DOES NOT CLOSE MATHEMATICALLY. I LOCATED EXTERIOR OF BLOCK 82 AND THE EAST AND WEST SIDE LINES OF BLOCK 82, NORTH OF THE RAILROAD BY PROPORTIONAL MEASUREMENT. I LOCATED THE NORTH RIGHT-OF-WAY LINE OF THE RAILROAD ON A 1859.86 FOOT RADIUS ARC DEFINITION CURVE. THE RECORD RAILROAD CENTERLINE CURVE IS HAS A RADIUS OF 1909.86 FEET, (3' CURVE), AS REPORTED IN THE FIELD NOTE NARRATIVE FOR RESERVE ADDITION.

THE SURVEY WAS MADE BY ONE AND TWO PERSON CREW USING TRIMBLE GEODETIC GPS RECEIVERS OPERATED IN REAL TIME KINEMATIC MODE AND WITH A LEICA TCR 803 THREE SECTION TOTAL STATION. CONTROL MONUMENTS WERE VISITED AND TIED IN MARCH 2014. NEW MONUMENTS WERE ESTABLISHED ON MARCH 18, 2014.

- NOTES:**
- # 1. THE CORNER FALLS ON THE EDGE OF A POWER VAULT. SET A LEAD PLUG IN DRILL HOLE WITH 3/4" BRASS WASHER STAMPED "PLS 1106" SCREWED INTO LEAD PLUG. THE LEAD PLUG IS A "WITNESS" MONUMENT SET N 23°35'30" W, 0.10 FOOT FROM THE TRUE CORNER POINT.
 - # 2. LOTS 1 THROUGH 6 AND 10 THROUGH 14 OF BLOCK 82 ARE IN THE PROCESS OF BEING TERMINATED BY REPLAT AND ARE NOT SHOWN.
 - # 3. THE PLAT KNOWN AS RESERVATION ADDITION WAS ORIGINALLY PLATTED AS RESERVE ADDITION.
 - # 4. THE NORTH-SOUTH MID BLOCK LINE IN BLOCK 82 IS NOT SHOWN. HOWEVER, I COMPARED THE RECORD MID BLOCK DIMENSION WITH THE MEASURED DIMENSION. THE RECORD MID BLOCK DIMENSION IS 242.75 FEET. I MEASURED 243.10 FEET ALONG THE MID-BLOCK LINE BETWEEN THE SOUTH RIGHT-OF-WAY LINE OF S.W. EMIGRANT AND THE NORTH RIGHT-OF-WAY LINE OF THE RAILROAD.

CURVE TABLE					
NO	DELTA	RADIUS	LENGTH	CHORD	CHORD BRG
C1	1°58'19"	1859.86'	64.01'	64.00'	N 86°46'49" E
C2	6°47'25"	1859.86'	220.42'	220.29'	S 88°50'19" E
(C2 218.67') ALONG RR R/W					

RECEIVED BY
Umatilla County Surveyor
Date: 5/11/2014
Rec'd By: G. Gessley
No.: 14-034-C

REGISTERED PROFESSIONAL LAND SURVEYOR <i>Will R. Wells</i> OREGON JULY 22, 1977 WILLIAM R. WELLS 1106 RENEWS 6/30/14	WELLS SURVEYING 1 SW NYE AVENUE, SUITE B P.O. BOX 1896 PENDLETON, OREGON PHONE: (541) 276-6362	PROJECT: TOPOGRAPHIC SURVEY OF S.W. 9TH STREET & BLOCK 82, RESERVATION ADDITION BETWEEN S.W. EMIGRANT AVENUE & THE RAILROAD RIGHT-OF-WAY & PARTIAL BOUNDARY SURVEY OF BLOCK 82. SITUATED IN THE W1/2 OF THE E1/2 OF SECTION 10, T2N., R32E., W.M., CITY OF PENDLETON, UMATILLA COUNTY, OREGON.
	DATE: 03/14 CK BY: WRW	DR BY: WRW NO: 14-1485