

**COLUMBIA DEVELOPMENT AUTHORITY
UMATILLA DEPOT SURVEY**

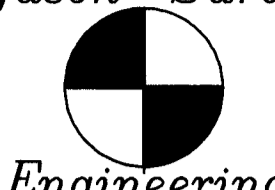
Situated in MORROW COUNTY as follows:

- I.5N., R.27E., W.M.
- All of Section 32
- I.4N., R.26E., W.M.
- E1/2 of Sections 1, 12 & 13;
- E1/2 of Section 24 lying north of the Union Pacific Railroad Right of Way.
- I.4N., R.27E., W.M.
- All of Sections 4, 5, 6, 7, 8, 9, 16, 17 & 18;
- Sections 19, 20 & 21 lying north of the Union Pacific Railroad Right of Way;
- NE1/4 of Section 28 lying north of the Union Pacific Railroad Right of Way;

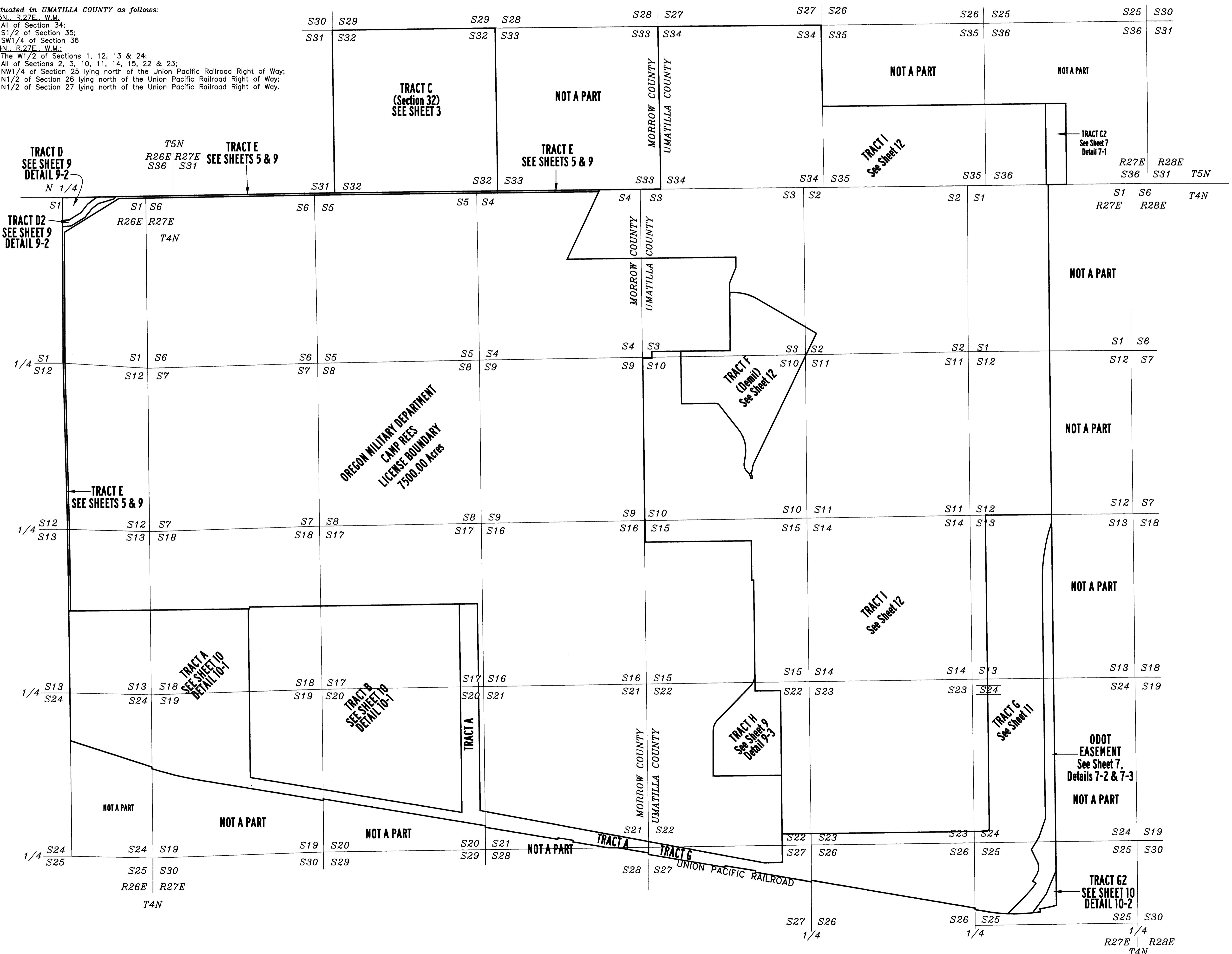
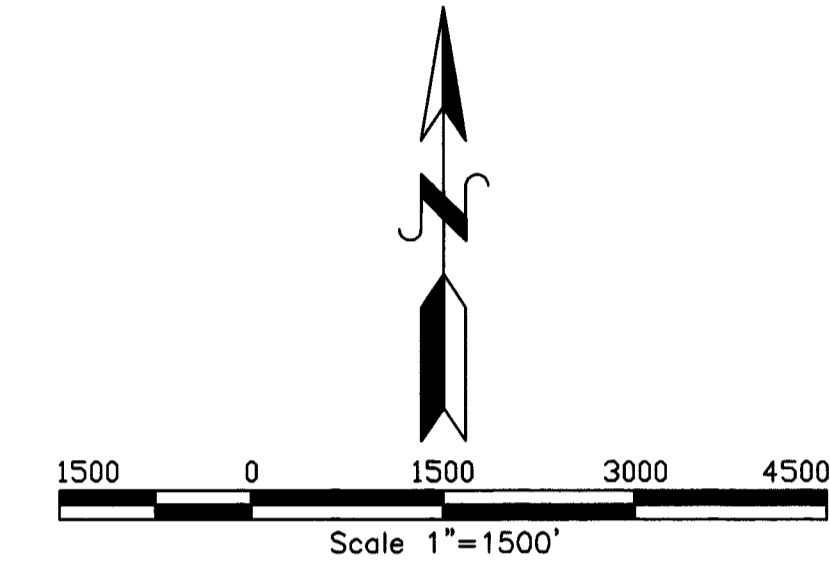
Situated in UMATILLA COUNTY as follows:

- I.5N., R.27E., W.M.
- All of Section 34;
- S1/2 of Section 35;
- SW1/4 of Section 36
- I.4N., R.27E., W.M.
- The W1/2 of Sections 1, 12, 13 & 24;
- All of Sections 2, 3, 10, 11, 14, 15, 22 & 23;
- NW1/4 of Section 25 lying north of the Union Pacific Railroad Right of Way;
- N1/2 of Section 26 lying north of the Union Pacific Railroad Right of Way;
- N1/2 of Section 27 lying north of the Union Pacific Railroad Right of Way.

Ferguson Surveying



P.O. BOX 519, 210 E. MAIN
MT. VERNON, OR 97865
PHONE (541)932-4520
FAX (541)932-4430
EMAIL djfe@oretelco.net



SHEET INDEX

- SHEET 1 - COVER AND INDEX
- SHEET 2 - NARRATIVE AND LEGEND FOR RECORD SURVEYS
- SHEET 3 - WEST PORTION OF SURVEY IN MORROW COUNTY
- SHEET 4 - EAST PORTION OF SURVEY IN UMATILLA COUNTY
- SHEET 5 - DETAIL 5-1: WEST EXTERIOR BOUNDARY
DETAIL 5-2: WEST EXTERIOR BOUNDARY
DETAIL 5-3: PORTION OF THE NORTH EXTERIOR BOUNDARY AND TOWNSHIP LINE 4N & 5N
- SHEET 6 - DETAIL 6-1: PORTION OF THE NORTH EXTERIOR BOUNDARY AND TOWNSHIP LINE 4N & 5N
DETAIL 6-2: PORTION OF THE NORTH EXTERIOR BOUNDARY, TOWNSHIP LINE 4N & 5N, AND RECOVERY OF USACE 1987 SURVEY MONUMENTS
DETAIL 6-3: PORTION OF THE NORTH EXTERIOR BOUNDARY, TOWNSHIP LINE 4N & 5N, AND RECOVERY OF USACE 1987 SURVEY MONUMENTS
- SHEET 7 - DETAIL 7-1: PORTION OF THE NORTH & EAST EXTERIOR BOUNDARY AND TRACT C2.
DETAIL 7-2: PORTION OF THE EAST EXTERIOR BOUNDARY AND ODOT EASEMENT
DETAIL 7-3: PORTION OF THE EAST EXTERIOR BOUNDARY AND ODOT EASEMENT.
- SHEET 8 - DETAILS 8-1 TO 8-3: SOUTH EXTERIOR BOUNDARY/ UNION PACIFIC RAILROAD RIGHT OF WAY
- SHEET 9 - DETAIL 9-1: SOUTH EXTERIOR BOUNDARY/ UNION PACIFIC RAILROAD RIGHT OF WAY
DETAIL 9-2: TRACT D & D2 AND DESCRIPTION OF TRACT E
DETAIL 9-3: TRACT H
- SHEET 10 - DETAIL 10-1: TRACTS A & B
DETAIL 10-2: TRACT G2
- SHEET 11 - TRACT G & COORDINATE TABLES
- SHEET 12 - TRACT F & TRACT I

RECEIVED BY
Umatilla County Surveyor
Date: 11/27/2016
Rec'd By: G. Hensley
No.: 16-018-C

REGISTERED
PROFESSIONAL
LAND SURVEYOR

OREGON
JULY 13, 1999
KENNETH H. DELANO JR.
49865
RENEWS: 1/1/2018

HISTORY OF SURVEYS

The First Standard Parallel North, being the south line of T.5N., R.26 & 27E., was originally surveyed by H.J.G. Maxon and Jared S. Hurd under Contract No. 50, dated February 2, 1860.

The East line of T.4N., R.28E. and the North line of T.3N., R.27E., was originally surveyed by Ebenezer Haft under Contract No. 93, dated September 11, 1860.

The subdivision of that part of T.5N., R.27E. lying south of the Columbia River was originally surveyed by Timothy Davenport under Contract No. 101, dated August 5, 1861.

The East Line and the Subdivision of T.4N., R.26E. was originally surveyed by John B. David under Contract No. 131, dated June 8, 1869.

The subdivision of T.4N., R.27E., was originally surveyed by Nicholas Walden under Contract No. 209 dated July 6, 1874. In order to complete his subdivision, Walden resurveyed the East and West lines of the township and the North lines of Sections 1 & 2. on the exterior boundary of T.4N., R.27E.

The south line of T.5N. R.26E. was retraced by Joseph A. Ganong, under instructions dated March 8, 1915, to govern surveys included in Group No. 9. Ganong does not make any mention of the closing corners for T.4N. during his retracement.

A dependent resurvey of the First Standard Parallel North, through R.26E., and dependent resurvey of the subdivision of T.4N., R.26E. was performed by Otis O. Gould in 1939 under special instructions dated January 26, 1938 which provided for the surveys included under Group No. 217. It should be noted that Gould reset both the Standard Corners for T.5N. and the Closing Corners for T.4N. during this survey.

A dependent resurvey of the First Standard Parallel North, through R.27E., and dependent resurvey of the east boundary of T.4N., R.27E. was performed by Otis O. Gould in 1941 under special instructions dated September 9, 1940, which provided for the surveys included under Group No. 260. It should be noted that Gould reset only the Standard Corners to T.5N., excepting the Closing Corner at T.4N., R.27 & 28E., which he reset at proportionate measure.

In 1987, The U.S. Army Corps of Engineers (USACE) performed a survey of a portion of the exterior boundary of the Umatilla Ordnance Depot, which did not include the survey of exterior of Sections 32 and 34 in T.5N., R.27E., W.M. This survey is discussed further in the Narrative.

In addition to the above mentioned survey, numerous private surveys have been conducted as shown in the "LEGEND FOR RECORD SURVEYS".

Some of these surveys will be discussed further in the Narrative.

NARRATIVE

This survey was performed under contract with the Columbia Development Authority to locate and monument, where required, the exterior boundary of the Umatilla Army Depot and to monument the tracts, as shown, in preparation for the transfer of said tracts out of Federal ownership to private ownership. This survey is in no way intended to be a subdivision survey.

This survey is based on the survey for the Oregon Military Department, hereafter referred to as the "Camp Rees Survey", performed by this firm in 2014 and filed as Morrow County Map of Survey #2014-1712C and Umatilla County Map of Survey 14-119-B in their respective County Surveyor's records.

The datum for this survey is NAD 83(epoch 2010) Oregon North Zone(3601) as shown on said Camp Rees Survey.

The westerly Depot boundary is the north-south center of section lines through sections 1,12, 13 and 24, T.4N., R.26E. as shown herein. The relevant 1/4 Section Corners were re-established by the G.L.O. in 1939 and recovered as shown. The monument marking the 1/4 corner to Section 13 & 24 was not recovered and is re-set at the location determined on the Camp Reese Survey and is discussed below.

As shown on the Camp Rees Survey, a portion of the exterior boundary of the Depot was surveyed and monumented by the United States Army Corp of Engineers (USACE), Walla Walla District in 1987. A copy of this survey was provided by the Corp of Engineers. We recovered a majority of the USACE monuments as shown herein.

We find the USACE survey monuments along the westerly boundary to be online between the aforementioned 1/4 corners and accept the Corps survey along the westerly Depot boundary as the record position. The USACE survey monumentation notes indicate that the G.L.O. monument at the 1/4 corner to Section 13 & 24 was found to be damaged and was replaced with a Corps monument. We did not recover the G.L.O. or USACE monument at this location. We determined that the record position returned by the USACE survey to be best available evidence of the location of this corner and set a new monument in that location during this survey.

At the Standard 1/4 Corner for Section 36, T.5N., R.26E., we recover the G.L.O. monument set by Ganong in 1915. At a point 926 feet west of the G.L.O. monument, we recover USACE monument 10-2, and find that based on it's position relative to the said 1/4 corner, it represents the best record position to determine the direction of the N-S center of section line of Section 1, T.4N., R.26E.

At the Township Corner to T.5N., R.26 & 27E., we find a brass cap set by Judson Coppock in 2008. Mr. Coppock recovered the 1915 G.L.O. monument in 1998 as reported on Morrow County Map of Survey C-1195-E. In 2008, Mr. Coppock finds the G.L.O. monument has been destroyed and re-monuments it. See Morrow County Corner Record 5N27E-Z1. We accept this monument as the Township corner.

At the Standard Corner to Sections 31 & 32, we find a brass cap set by Judson Coppock in 1998, which he states he re-established at record angles and proportionate measure from the 1941 G.L.O. survey. We accept this monument.

We recover the 1941 G.L.O. monuments on the Township line between T.5N. and T.4N. as follows: Standard 1/4 Sec 32

- Standard Section corner to Sec. 32 & 33
Standard Section corner to Sec. 33 & 34
Standard 1/4 Sec 34
Standard Section corner to Sec. 34 & 35
Standard 1/4 Sec 35
Standard 1/4 Sec 36
Closing Township Corner to Sec. 1, R.27E., and Sec. 6, R.28E., in T.4N.

The closing corners for Sections 1, 2, 3, 4, 5 & 6, excepting the Township Corner as noted above, are not found during this survey are positioned at single proportionate measure from their respective controlling corners, utilizing the 1941 GLO measurements along the Twp. Line and the fallings called by Walden in 1874.

The 1987 USACE survey recovered the G.L.O. monuments at the Standard 1/4 Corner for Section 36, T.5N., R.26E. and the Standard 1/4 Corner for Section 32, T.5N., R.27E. USACE monuments are set in a straight line between the above said monuments, as indicated on the USACE survey. The fallings to the Township line are shown herein for the off-line USACE monuments and the distance shown between said monuments are on the Township line at a point perpendicular to the said Township line from the USACE monuments.

We find the USACE monuments between the found G.L.O. monuments east of the Standard 1/4 Corner for Section 32, T.5N., R.27E. to be on the Township line.

NARRATIVE (cont.)

Near the location of the Standard Section corner to Sections 35 & 36, T.5N., R.27E., we find the 1941 GLO monument bent nearly in half and lying nearly horizontal but protruding above the ground surface, 17 feet north of the Township Line. We dug up the monument and searched for the glass deposit per Gould's 1941 notes and found no sign of the glass. It appears that this monument had been displaced by construction or farming equipment. A position for this corner is calculated at single proportionate measure from the found GLO monuments 1/2 miles east and west.

At the Township Corner for T.5N., R. 27 & 28 E., we find a brass cap set by Donald Staebler in 1972. Umatilla Map of Survey 94-22-C, by Dennis Edwards indicates that Mr. Edwards recovered a monument set by David Krumbien in 1980, S80°14'53"E, 68.26 from the Staebler monument. We searched for Mr. Krumbien's monument but did not recover it. We accept the Staebler monument as the Township Corner.

In order to verify the location of the E-W center of Section 35, T.5N., R.27E., as monumented by USACE, we recover the record section corners at the NW and SW corners as shown. The NE corner, which has been destroyed, is re-established by double proportion from the found section corners 1 mile in each direction as shown. The SE corner is re-established as stated above. We then compare the position of the USACE monuments to the calculated proportionate position of the 1/4 corners. At the West 1/4 of Section 35, we find USACE monument B-2 to be N83°07'20"E, 2.52 feet from the proportionate position. We accept said monument as the record position of the West 1/4 corner. At the East 1/4 of Section 35, we find USACE monument 19-2 to be N17°58'32"E, 0.37 feet proportionate position. We accept said monument as the record position of the East 1/4 corner.

In order to verify the USACE monuments on the depot boundary marking the SW1/4 of Section 36, T.5N., R.27E., we perform a similar comparison. However, in this case we recover a Umatilla County Surveyor's brass cap, set in 1973 (See Umatilla Survey #I-16-C), near the location of the center 1/4 corner. We also find that the Township corner (SE corner of Section 36) as utilized on survey #I-16-C was not the Staebler cap we used for this survey. We then compare the position of the USACE monument and the said brass cap near the center 1/4 to the calculated position of the center corner based on the corner positions utilized for this survey. We find the USACE monument to be N41°15'14"W, 1.54 feet and the County Surveyor's brass cap to be S88°03'21"E, 2.96 feet from the calculated center 1/4 position. Based on those findings, we determine that the USACE survey monuments marking this portion of the depot boundary will control for this survey.

For that portion of the depot boundary monumented by the USACE coursing south along the center of Section 1 & 12, T.4N., R.27E., we find the following:

The USACE monument, marked 20-4=1-1, falls 36.70 feet west of the proportionate position for the N1/4 of Section 1. The USACE monumentation notes refer to this monument as the "1/4 S .1". Given that this monument was set in 1987 and is marking the location of the boundary between the federal property and the private ground to the east, we accept the USACE monuments as the best position for the N1/4 corner of said Section 1.

The USACE monument, marked 1-2=A-11, falls 1.22 feet east of the proportionate position of the 1/4 common to Sections 1 & 12. The USACE monumentation notes refer to this monument as the "1/4 S .1/S.12". We accept this monument as the best position for the said 1/4 corner.

We find that the USACE monuments marking the N-S centerlines of both Sections 1 & 12 to be online between the above accepted 1/4 corner positions.

CALCULATED PUBLIC LAND CORNER LOCATIONS

It should be noted that all of the original G.L.O. monuments consisted of posts with pits and mounds. A search was made for the original G.L.O. monuments as noted herein with a "SF-NF" notation. Original G.L.O. evidence was not searched for at positions noted with "NSM" notation and these positions are utilized for area calculations provided to the U.S. Army Corps of Engineers. The "NSM" positions should not be relied upon as the true public land corner locations.

ODOT EASEMENT - INTERSTATE 82

The easement for Interstate 82 was issued from the Secretary of the Army to the State of Oregon, Department of Transportation, recorded on February 21, 1984, Reel 110, Page 1013 of the Umatilla Deed Records, located in the W1/2 of Sections 13 and 24 and in the NW1/4 of Section 25, T.4N., R.27E.

The easement was surveyed by the Oregon Department of Transportation, State Highway Division, as shown on Umatilla County Surveys 91-40-C and 91-41-C, both filed in May of 1991.

We recovered the South bound centerline alignment reference monuments as shown. The South bound centerline alignment tangent line, from record station 537+43.34 to 610+00 is established 65 feet east of ODOT monuments 402 thru 408, excepting 404, which was not tied.

Based on the tangent length shown on the ODOT survey when compared to the field measurements to the offset monuments, we applied a scale factor of 0.999878 to the record curve geometry in order to match the ODOT surveys.

We find that the existing westerly easement fence is nearly exactly on the easement line as shown on survey 91-40-C. The easement lines are shown herein for informational purposes and no monuments are set along the said westerly easement line.

The easterly line of the ODOT easement is the N-S center of section line of Sections 13, 24 and 25, excepting that portion of the easement located in the NW1/4 of Section 25, which is shown herein as the northwesterly boundary of Tract G2.

RAILROAD RIGHT OF WAY

The right of way lines of the Union Pacific Railroad are located by field ties of the northerly steel rail of the mainline, then offset southerly 2.48' to the centerline of the right of way. The surveyed centerline tangents are held and the record curve geometry from drawings titled "Right of Way and Track Map, Oregon and Washington Railroad & Navigation Company, Main Line - Messner to Hinkle" numbered 3-3, 3-4 and 3-5 is herein as shown. The right of way is shown herein based on the said railroad drawings. Railroad stationing shown herein is held at the record point of curve (PC) station 456+41.10. Right of way changes in width that occur at record stations are calculated by proportioned distance from the measured tangent length from station 464+07.95 to station 722+28.53 compared to the record distance of said tangent.

TRACT BOUNDARIES

The Tract boundaries as shown herein are placed at the locations determined by the Columbia Development Authority. Legal descriptions of each tract have been provided to the U.S. Army Corps of Engineers based on and referenced to this map of survey.

COLUMBIA DEVELOPMENT AUTHORITY
UMATILLA DEPOT SURVEY

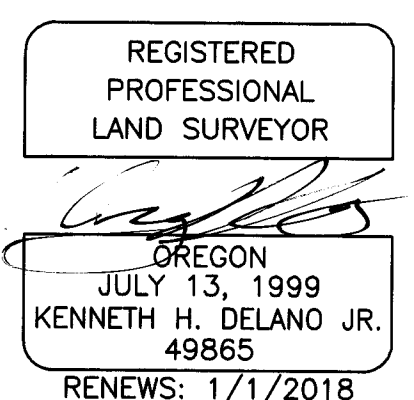
LEGEND FOR RECORD SURVEYS

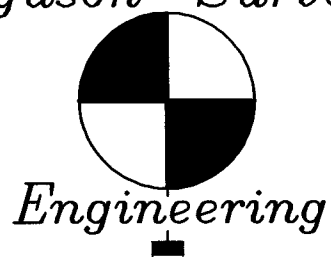
Table with 3 columns: Bearing/Dist, Description, and Reference. Lists various survey bearings and distances with their corresponding records and surveyors.

NOTES

Record from Umatilla County Map of Survey E-9-B, by Donald Staebler, dated 3/5/1968, not shown along the East line of Section 25, T.4N., R.27E., because Staebler used feet instead of links to re-locate the Section line from the GLO reference monuments. This has no effect on this survey.
Record from Umatilla County Map of Survey S-156-C, by David Krumbien, filed in 12/1981, not shown near the Township corners for T. 4 & 5N., R. 27 & 28E., because we only recovered one monument relevant to that survey. This has no effect on this survey but is relevant to future surveys along the township line to the east.
Record from Umatilla County Map of Survey I-160-C, by David Krumbien, dated 12/31/1974, not shown in Sections 1 & 12, T. 4 N., R. 27 E because none of the monuments utilized on Survey I-160-C were recovered or used on this survey.

RECEIVED BY
Umatilla County Surveyor
Date: 11/27/2016
Rec'd By: G. Hensley
No.: 116-018-C

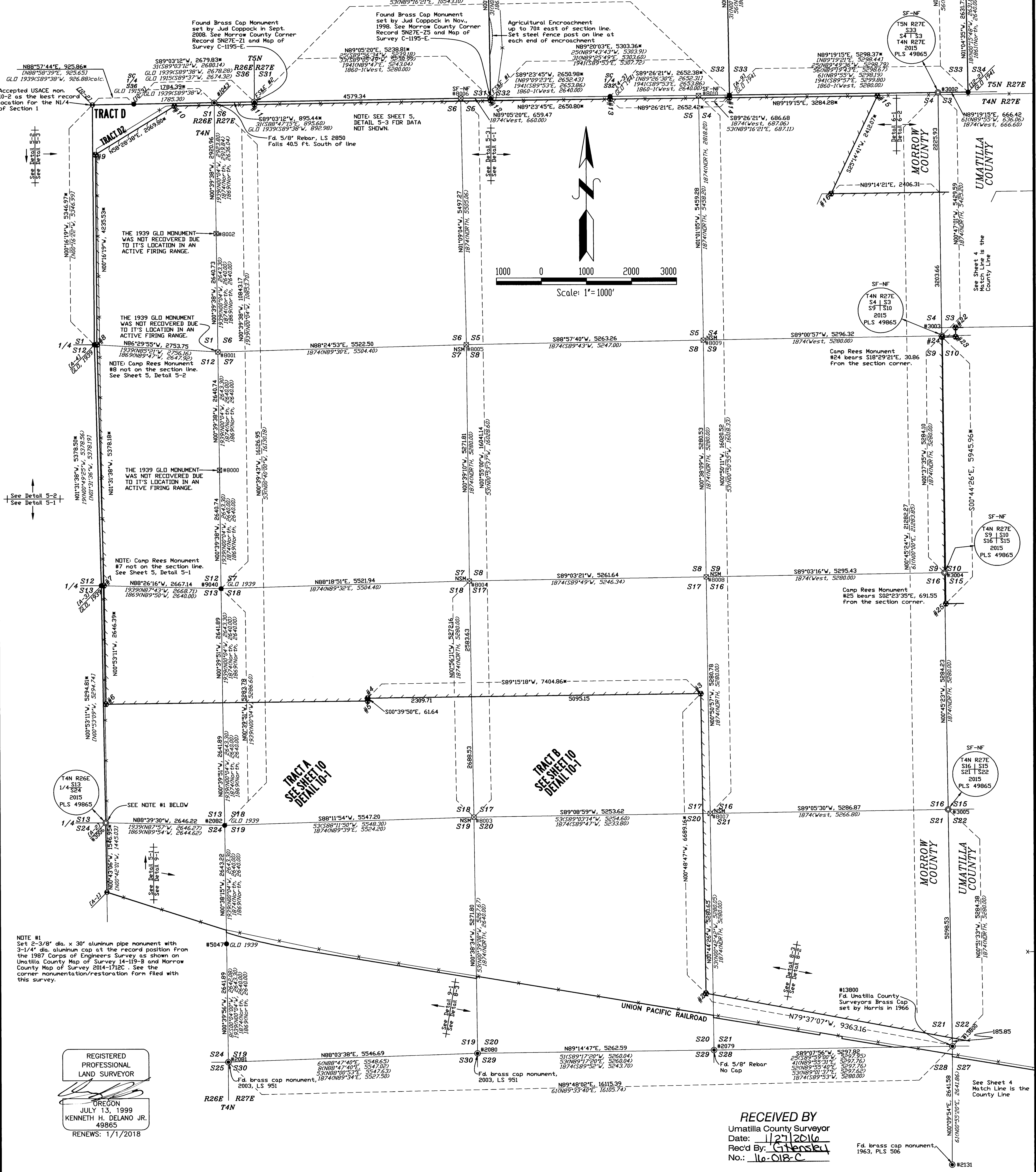




P.O. BOX 519, 210 E. MAIN
MT. VERNON, OR 97865
PHONE (541) 832-4520
FAX (541) 832-4430
EMAIL dfse@oretelco.net

LEGEND

- Found G.L.D. Brass cap monument, see date near symbol.
- ⊙ Found record survey monument. See note near symbol.
- ⊠ Found Corps of Engineers monument set in 1987.
- ⊠ Found 3" aluminum pipe monument with aluminum cap stamped "INDUSTRIAL AREA" and monument number as shown, set by H&S Construction Site Surveyors.
- ⊠ Found 3-1/4" dia. aluminum capped marked "CAMP REES DREGON MILITARY DEPT MIN NO. ## 2014 PLS 49865" as shown on Umatilla County Map of Survey 14-119-B and Morrow County Map of Survey 2014-1712C.
- ⊠ Calculated Corner Position. See Narrative.
- SF-NF Searched for, no evidence found.
- NSM No Search Made. Position shown for area calculations.
- ⊙ Set 2-3/8" dia. x 30" aluminum pipe monument with 3-1/4" dia. aluminum cap. Refer to the Corner Monumentation Records filed with this survey.
- ⊙ Set 5/8" dia. x 30" rebar pin with 2" dia. aluminum cap marked with the monument number, 2015, PLS 49865
- CAMP REES License Boundary as shown on Umatilla County Map of Survey 14-119-B and Morrow County Map of Survey 2014-1712C.
- Existing Fence Line
- Existing Utility Pole



NOTE #1
Set 2-3/8" dia. x 30" aluminum pipe monument with 3-1/4" dia. aluminum cap at the record position from the 1987 Corps of Engineers Survey as shown on Umatilla County Map of Survey 14-119-B and Morrow County Map of Survey 2014-1712C. See the corner monumentation/restoration form filed with this survey.

REGISTERED
PROFESSIONAL
LAND SURVEYOR

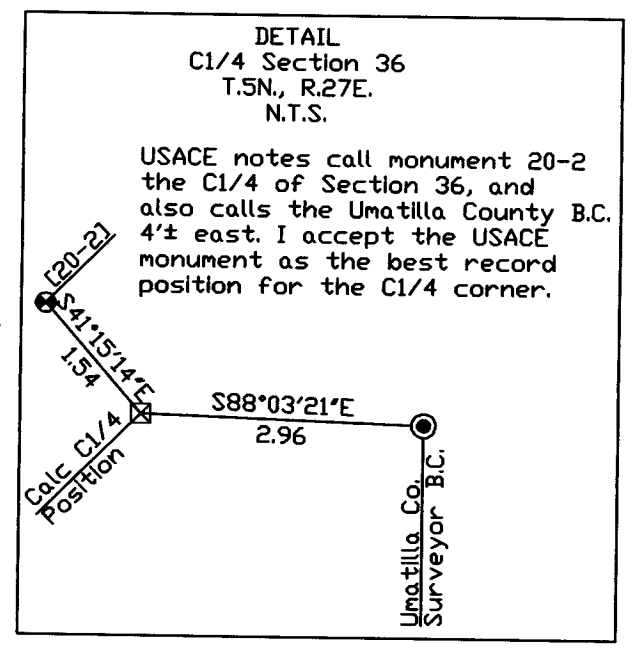
OREGON
JULY 13, 1999
KENNETH H. DELANO JR.
49865

RENEWS: 1/1/2018

RECEIVED BY
Umatilla County Surveyor
Date: 11/27/2016
Rec'd By: G. Hensky
No.: 16-018-C

Fd. brass cap monument,
1963, PLS 506

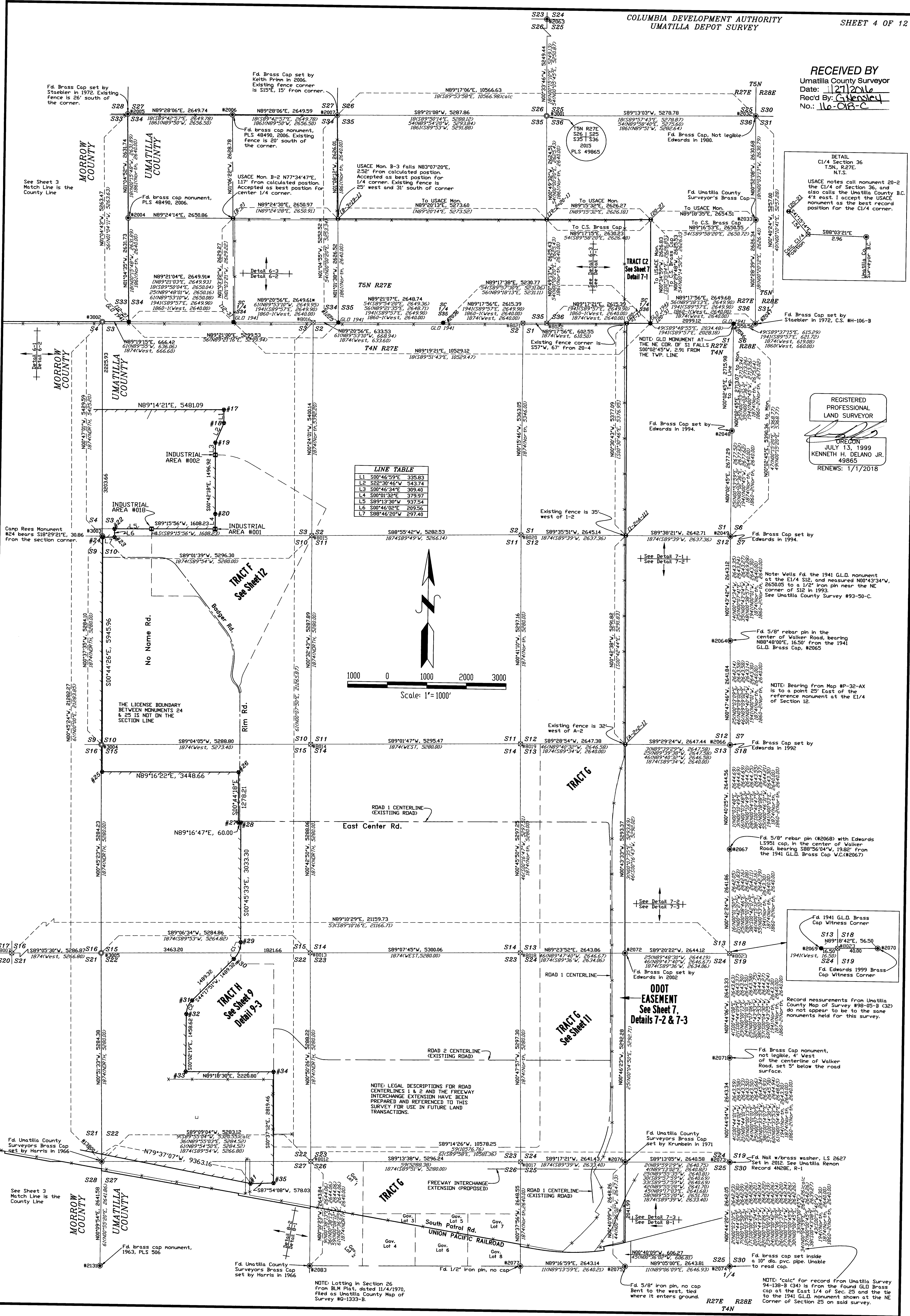
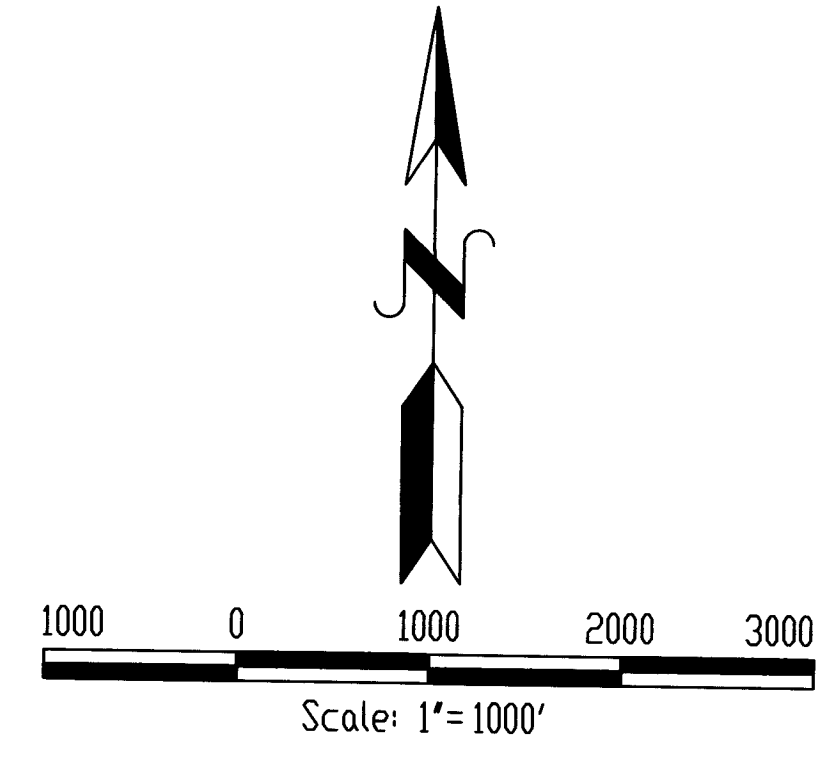
RECEIVED BY
Umatilla County Surveyor
Date: 11/21/2016
Rec'd By: G. Neasley
No.: 16-018-C



REGISTERED
PROFESSIONAL
LAND SURVEYOR
OREGON
JULY 13, 1999
KENNETH H. DELANO JR.
49865
RENEWS: 1/1/2018

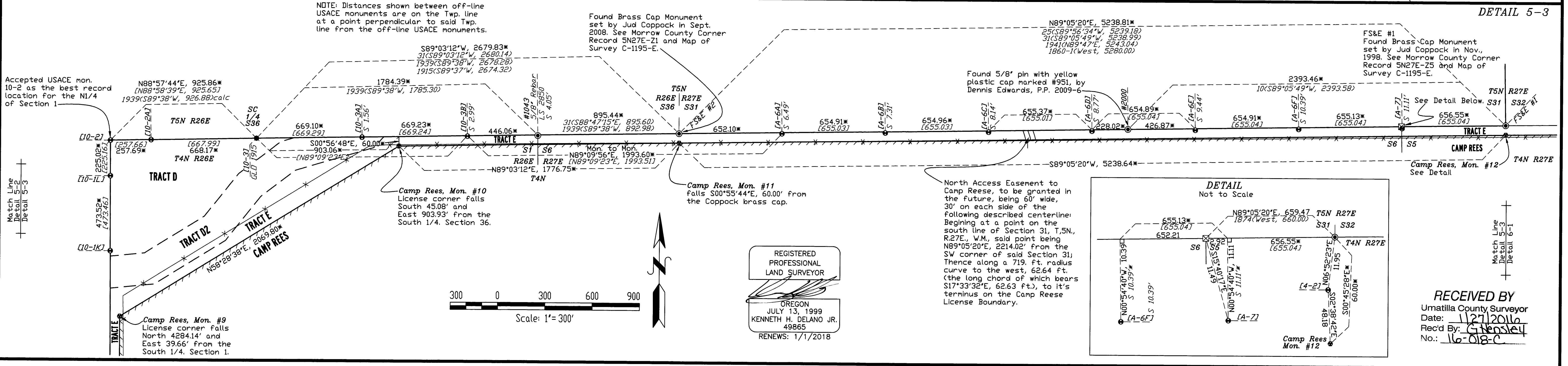
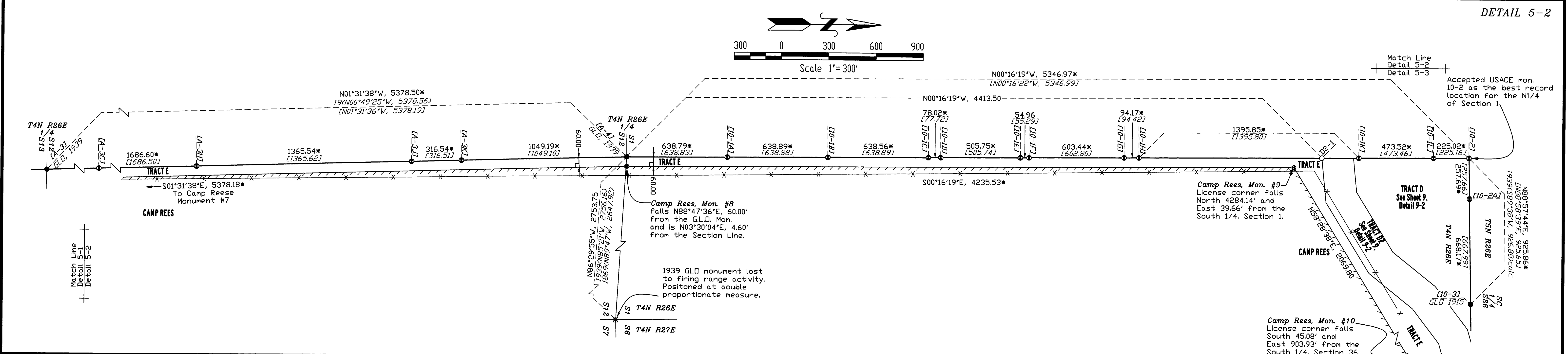
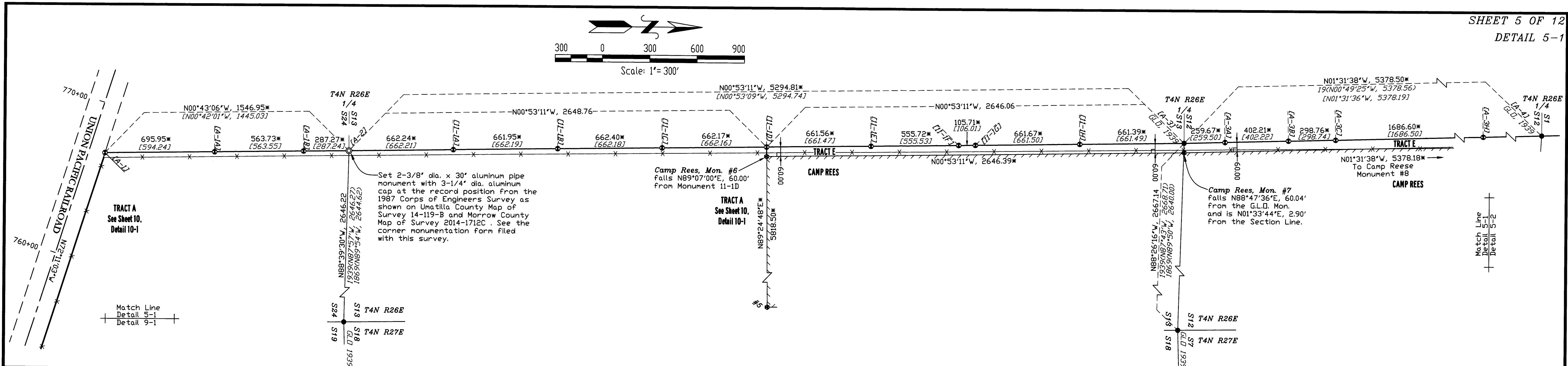
LINE TABLE

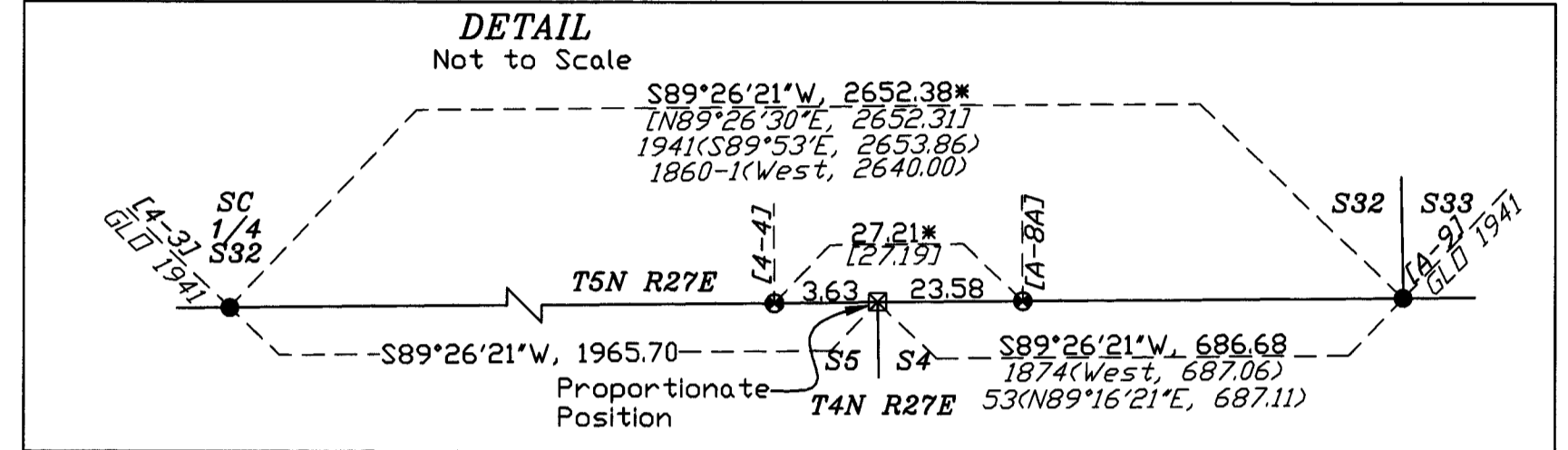
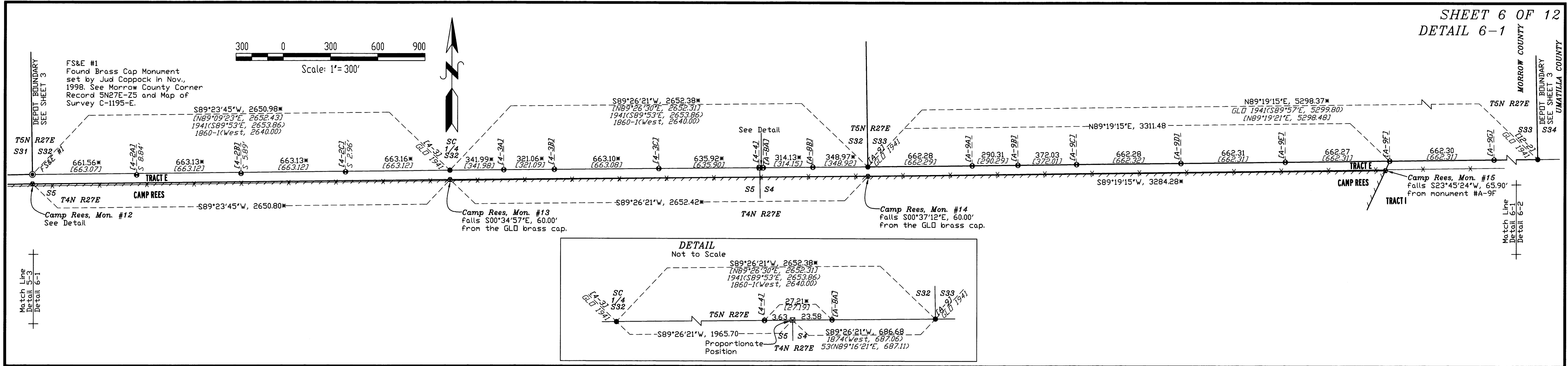
L1	S00°46'59"E	335.83
L2	S52°30'46"W	543.74
L3	S00°46'34"E	309.40
L4	S00°01'32"E	379.97
L5	S89°13'30"W	937.54
L6	S00°46'02"E	209.56
L7	S88°46'20"W	297.40



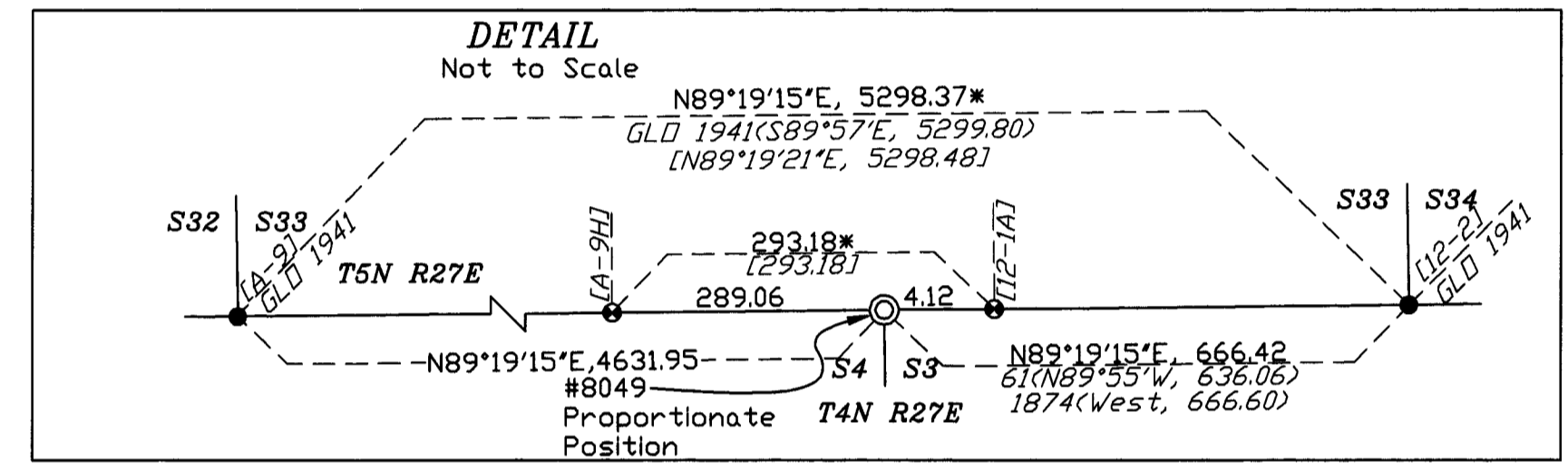
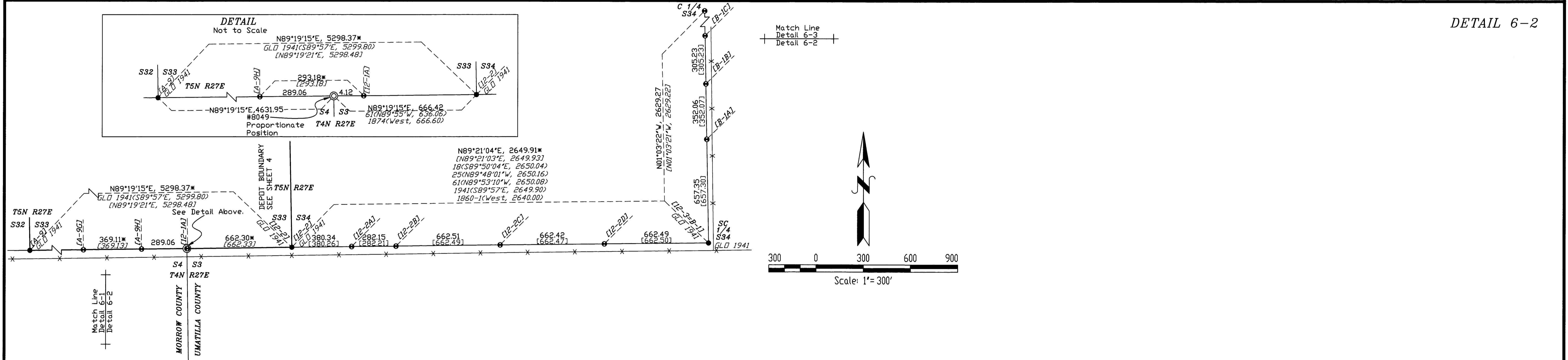
NOTE: Lotting in Section 26 from BLM Plat, dated 11/4/1970, filed as Umatilla County Map of Survey #0-1933-B.

NOTE: 'Calc' for record from Umatilla Survey 94-138-B (34) is from the found G.L.D. Brass cap at the East 1/4 of Sec. 25 and the tie to the 1941 G.L.D. monument shown at the NE corner of Section 25 on said survey.

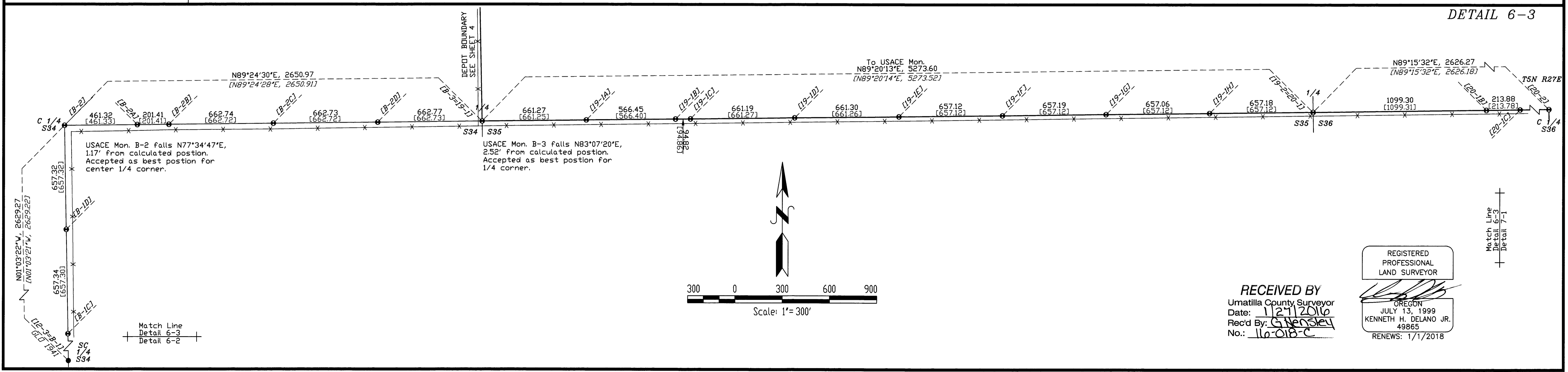




DETAIL 6-2

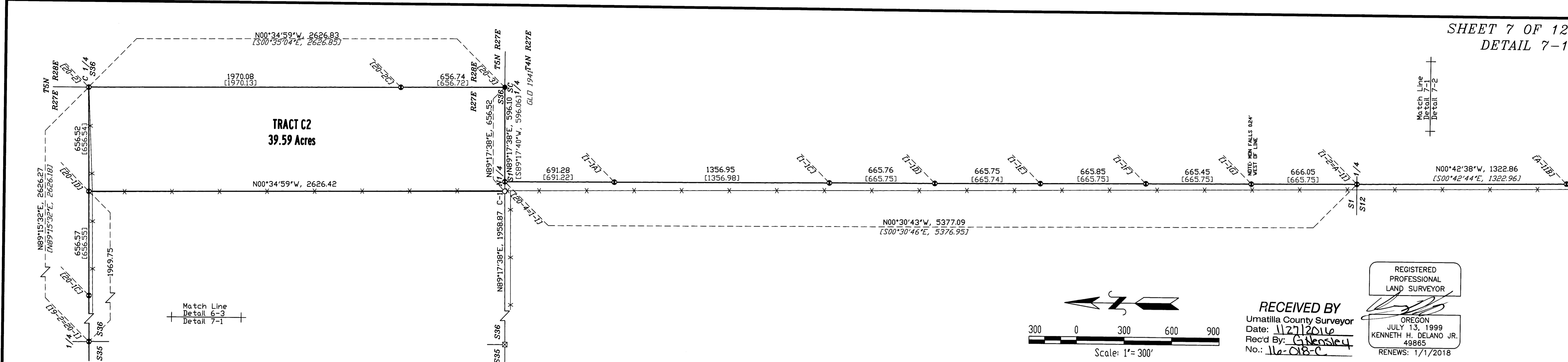


DETAIL 6-3



RECEIVED BY
Umatilla County Surveyor
Date: 11/21/2016
Rec'd By: G. Hensley
No.: 116-018-C

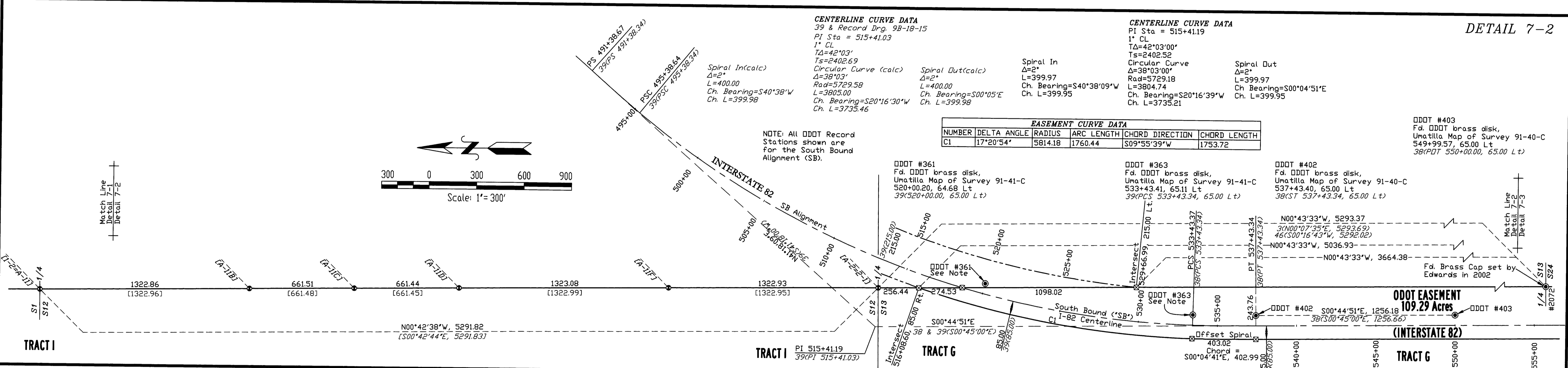
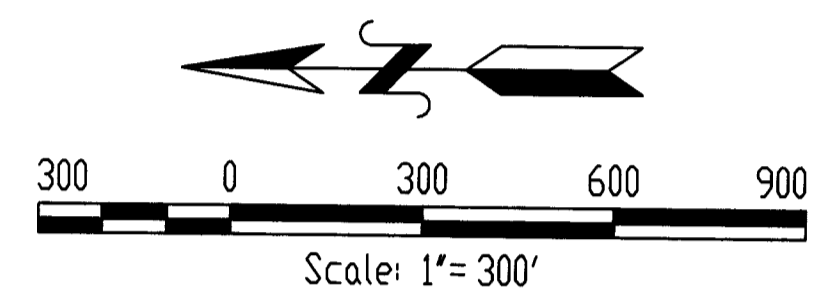
REGISTERED PROFESSIONAL LAND SURVEYOR
OREGON
JULY 13, 1999
KENNETH H. DELANO JR.
49865
RENEWS: 1/1/2018



REGISTERED
PROFESSIONAL
LAND SURVEYOR

OREGON
JULY 13, 1999
KENNETH H. DELANO JR.
49865
RENEWS: 1/1/2018

RECEIVED BY
Umatilla County Surveyor
Date: 11/21/2016
Rec'd By: G. Newley
No.: 11-018-C



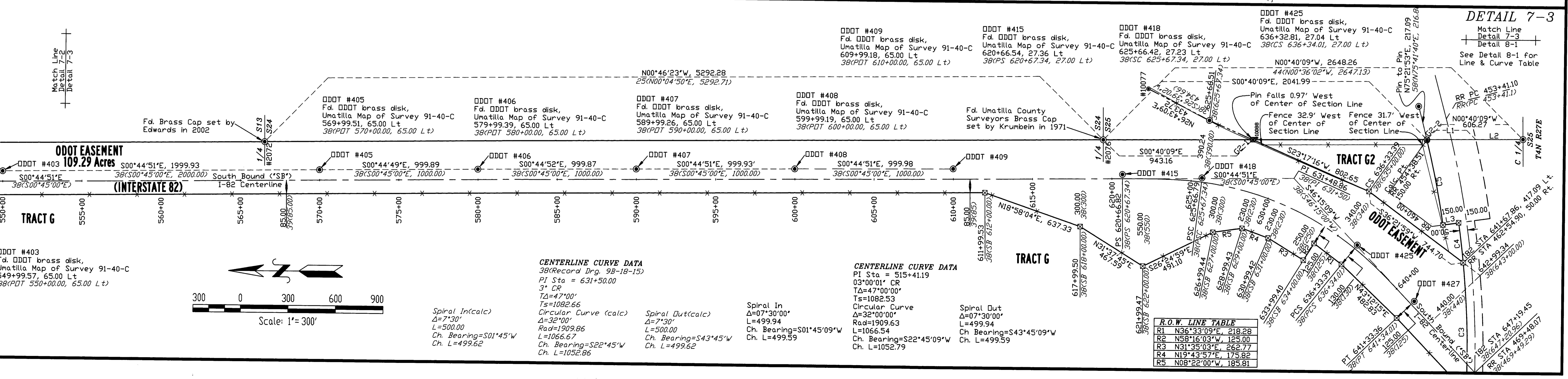
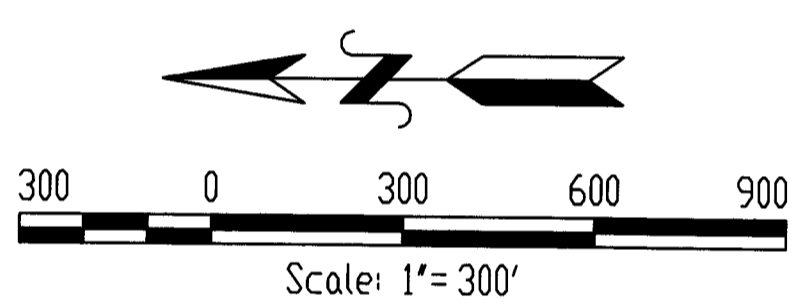
CENTERLINE CURVE DATA
39 & Record Drg. 98-18-15
PI Sta = 515+41.03
1° CL
TA=42°03'
Ts=5402.69
Circular Curve (calc)
Δ=38°03'
Rad=5729.58
L=3805.00
Ch. Bearing=S20°16'30"W
Ch. L=399.98

CENTERLINE CURVE DATA
PI Sta = 515+41.19
1° CL
TA=42°03'00"
Ts=2402.52
Circular Curve
Δ=38°03'00"
Rad=5729.18
L=3804.74
Ch. Bearing=S00°04'51"E
Ch. L=399.95

EASEMENT CURVE DATA

NUMBER	DELTA ANGLE	RADIUS	ARC LENGTH	CHORD DIRECTION	CHORD LENGTH
C1	17°20'54"	5814.18	1760.44	S09°55'39"W	1753.72

DDOT #403
Fd. DDOT brass disk,
Umatilla Map of Survey 91-40-C
549+99.57, 65.00 Lt
38(PDT 550+00.00, 65.00 Lt)

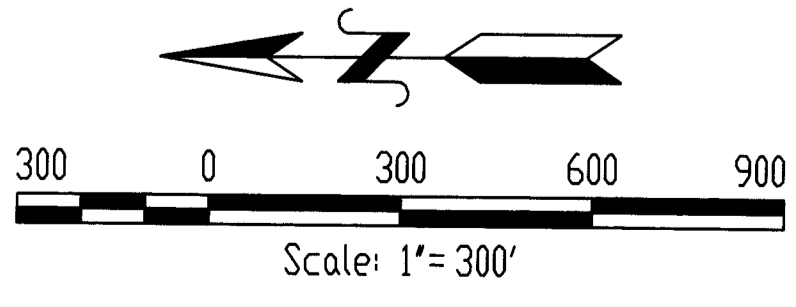


CENTERLINE CURVE DATA
38(Record Drg. 98-18-15)
PI Sta = 631+50.00
3° CR
TA=47°00'
Ts=1082.66
Circular Curve (calc)
Δ=32°00'
Rad=1909.86
L=1066.67
Ch. Bearing=S22°45'W
Ch. L=1052.86

CENTERLINE CURVE DATA
PI Sta = 515+41.19
03°00'01" CR
TA=47°00'00"
Ts=1082.53
Circular Curve
Δ=32°00'00"
Rad=1909.63
L=1066.54
Ch. Bearing=S22°45'09"W
Ch. L=1052.79

R.O.W. LINE TABLE

R1	N36°33'09"E, 218.28
R2	N58°16'03"W, 125.00
R3	N31°30'03"E, 262.77
R4	N19°43'57"E, 175.82
R5	N08°22'00"W, 185.81



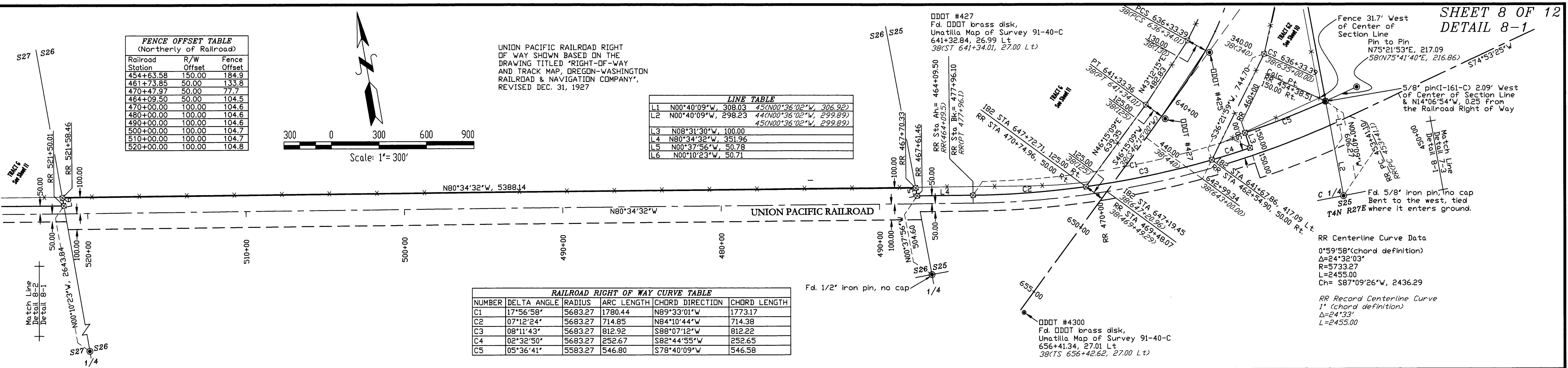
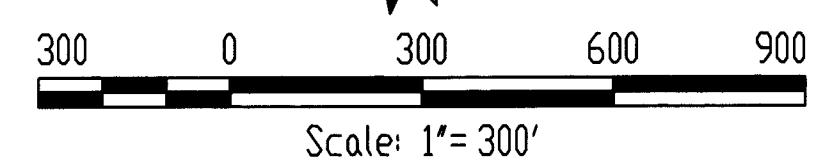
FENCE OFFSET TABLE
(Northerly of Railroad)

Railroad Station	R/W Offset	Fence Offset
454+63.58	150.00	184.9
461+73.85	50.00	133.8
470+47.97	50.00	77.7
464+09.50	50.00	104.5
470+00.00	100.00	104.6
480+00.00	100.00	104.6
490+00.00	100.00	104.6
500+00.00	100.00	104.7
510+00.00	100.00	104.7
520+00.00	100.00	104.8

UNION PACIFIC RAILROAD RIGHT OF WAY SHOWN BASED ON THE DRAWING TITLED "RIGHT-OF-WAY AND TRACK MAP, OREGON-WASHINGTON RAILROAD & NAVIGATION COMPANY", REVISED DEC. 31, 1927

LINE TABLE

L1	N00°40'09"W, 308.03	45(N00°36'02"W, 306.92)
L2	N00°40'09"W, 298.23	44(N00°36'02"W, 299.89)
L3	N08°31'30"W, 100.00	
L4	N80°34'32"W, 351.96	
L5	N00°37'56"W, 50.78	
L6	N00°10'23"W, 50.71	



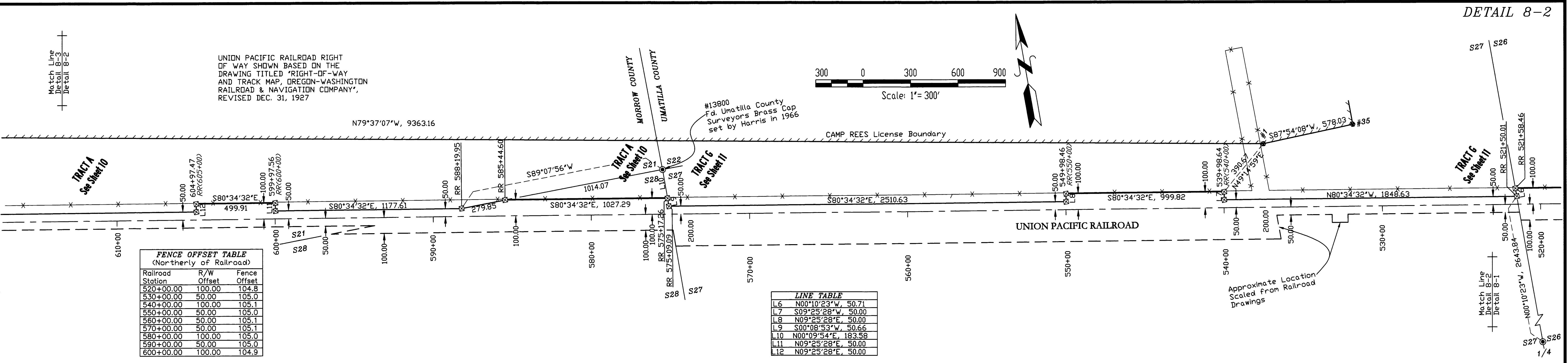
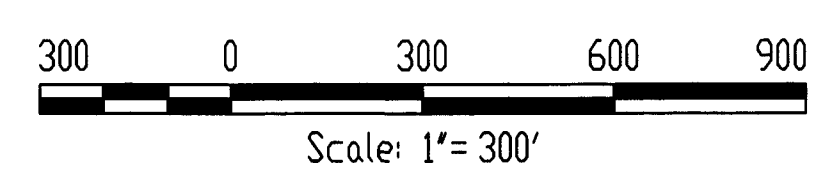
RAILROAD RIGHT OF WAY CURVE TABLE

NUMBER	DELTA ANGLE	RADIUS	ARC LENGTH	CHORD DIRECTION	CHORD LENGTH
C1	17°56'58"	5683.27	1780.44	N89°33'01"W	1773.17
C2	07°12'24"	5683.27	714.85	N84°10'44"W	714.38
C3	08°11'43"	5683.27	812.92	S88°07'12"W	812.22
C4	02°32'50"	5683.27	252.67	S82°44'55"W	252.65
C5	05°36'41"	5583.27	546.80	S78°40'09"W	546.58

RR Centerline Curve Data
 0°59'58" (chord definition)
 Δ=24°32'03"
 R=5733.27
 L=2455.00
 Ch= S87°09'26"W, 2436.29

RR Record Centerline Curve
 1" (chord definition)
 Δ=24°33'
 L=2455.00

UNION PACIFIC RAILROAD RIGHT OF WAY SHOWN BASED ON THE DRAWING TITLED "RIGHT-OF-WAY AND TRACK MAP, OREGON-WASHINGTON RAILROAD & NAVIGATION COMPANY", REVISED DEC. 31, 1927



FENCE OFFSET TABLE
(Northerly of Railroad)

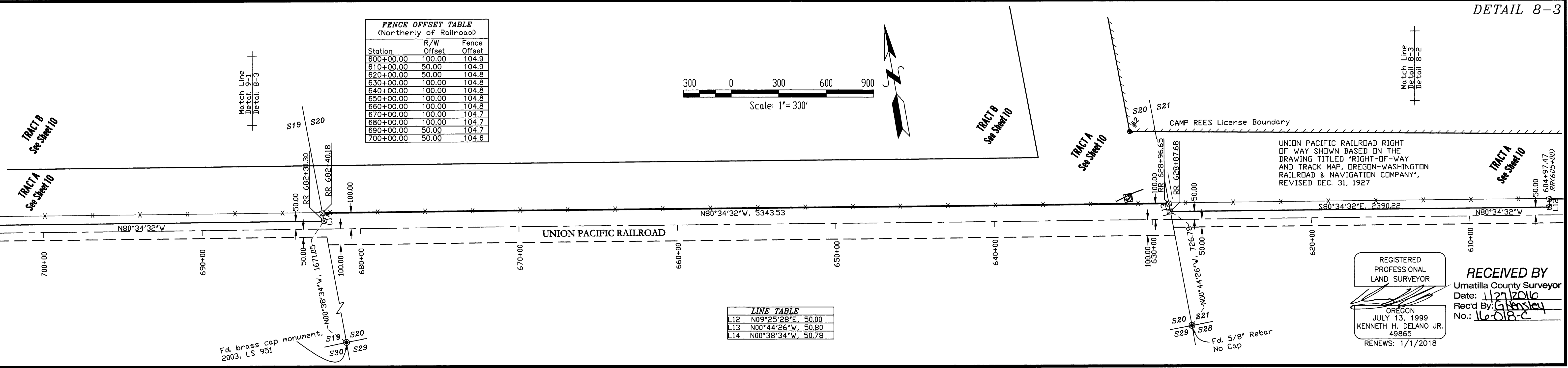
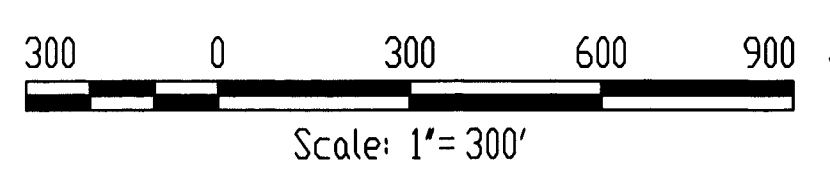
Railroad Station	R/W Offset	Fence Offset
520+00.00	100.00	104.8
530+00.00	50.00	105.0
540+00.00	100.00	105.1
550+00.00	50.00	105.0
560+00.00	50.00	105.1
570+00.00	50.00	105.1
580+00.00	100.00	105.0
590+00.00	50.00	105.0
600+00.00	100.00	104.9

LINE TABLE

L6	N00°10'23"W, 50.71	
L7	S09°25'28"E, 50.00	
L8	N09°25'28"E, 50.00	
L9	S00°08'53"W, 50.66	
L10	N00°09'54"E, 183.58	
L11	N09°25'28"E, 50.00	
L12	N09°25'28"E, 50.00	

FENCE OFFSET TABLE
(Northerly of Railroad)

Station	R/W Offset	Fence Offset
600+00.00	100.00	104.9
610+00.00	50.00	104.9
620+00.00	50.00	104.8
630+00.00	100.00	104.8
640+00.00	100.00	104.8
650+00.00	100.00	104.8
660+00.00	100.00	104.8
670+00.00	100.00	104.7
680+00.00	100.00	104.7
690+00.00	50.00	104.7
700+00.00	50.00	104.6



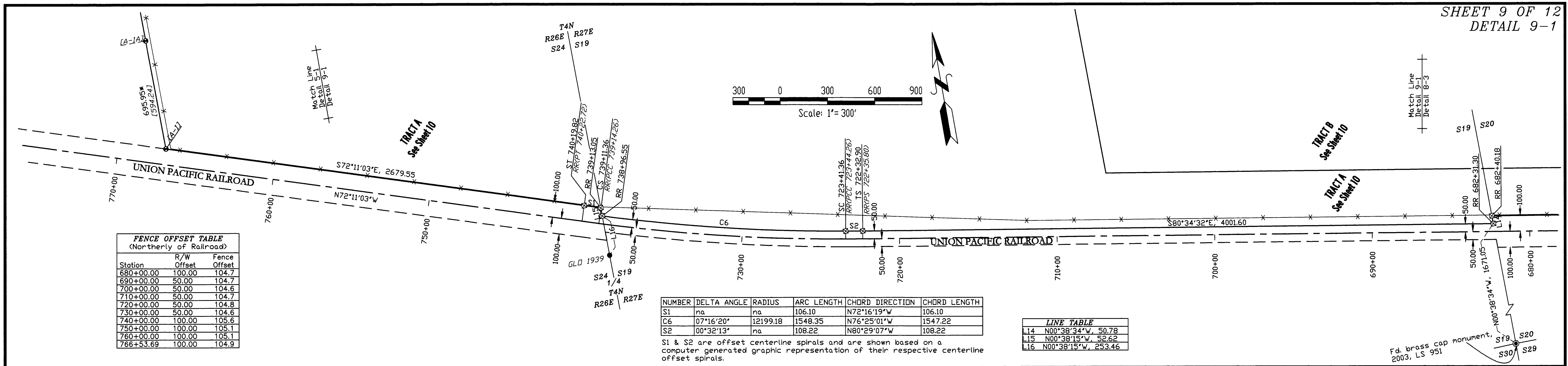
LINE TABLE

L12	N09°25'28"E, 50.00	
L13	N00°44'26"W, 50.80	
L14	N00°38'34"W, 50.78	

REGISTERED PROFESSIONAL LAND SURVEYOR

RECEIVED BY
 Umatilla County Surveyor
 Date: 11/27/2010
 Rec'd By: G. Hensley
 No.: 16-018-C

OREGON
 JULY 13, 1999
 KENNETH H. DELANO JR.
 49865
 RENEWS: 1/1/2018



FENCE OFFSET TABLE
(Northerly of Railroad)

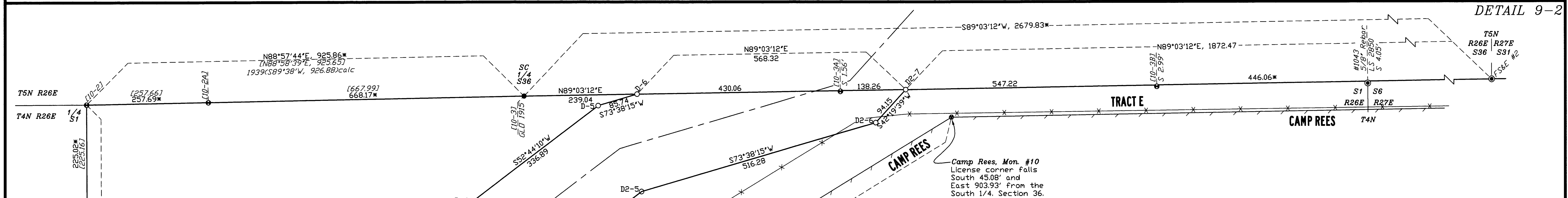
Station	R/W	Fence Offset	Offset
680+00.00	100.00	104.7	
690+00.00	50.00	104.7	
700+00.00	50.00	104.6	
710+00.00	50.00	104.7	
720+00.00	50.00	104.8	
730+00.00	50.00	104.6	
740+00.00	100.00	105.6	
750+00.00	100.00	105.1	
760+00.00	100.00	105.1	
766+53.69	100.00	104.9	

NUMBER	DELTA ANGLE	RADIUS	ARC LENGTH	CHORD DIRECTION	CHORD LENGTH
S1	na	na	106.10	N72°16'19"W	106.10
C6	07°16'20"	12199.18	1548.35	N76°25'01"W	1547.22
S2	00°32'13"	na	108.22	N80°29'07"W	108.22

LINE TABLE

L14	N00°38'34"W	50.78
L15	N00°38'15"W	52.62
L16	N00°38'15"W	253.46

S1 & S2 are offset centerline spirals and are shown based on a computer generated graphic representation of their respective centerline offset spirals.



TRACT E DESCRIPTION

Beginning at USACE Monument [11-10], said monument being S00°53'11"E, 2646.06 ft. from the N1/4 corner of Section 13, T.4N., R.26E.(Detail 5-1);

Thence N00°53'11"W, 2646.06 to the N1/4 corner of Section 13, [A-3](Detail 5-1);

Thence N01°31'38"W, 5378.50 to the N1/4 corner of Section 12, [A-4](Detail 5-1);

Thence N00°16'19"W, 4413.50 to Mon. D2-1 (Details 5-2 & 9-2);

Thence N84°17'55"E, 281.73 to Mon. D2-2 (Detail 9-2);

Thence N58°28'38"E, 526.23 to Mon. D2-3 (Detail 9-2);

Thence N38°31'04"E, 356.38 to Mon. D2-4 (Detail 9-2);

Thence N52°44'10"E, 275.06 to Mon. D2-5 (Detail 9-2);

Thence N73°38'15"E, 516.28 to Mon. D2-6 (Detail 9-2);

Thence N42°19'39"E, 94.15 to Mon. D2-7 (Detail 9-2);

Thence N89°03'12"E, 1872.47 to the SW corner of Section 31, T.5N., R.27E. [FS&E#2] (Detail 9-2);

Thence N89°05'20"E, 5238.81 to the SE corner of Section 31 [FS&E #1] (Detail 5-3);

Thence N89°23'45"E, 2650.98 to the S 1/4 corner of Section 32 [4-3] (Detail 6-1);

Thence N89°26'21"E, 2652.38 to the SE corner of Section 32 [A-9] (Detail 6-1);

Thence N89°19'15"E, 3311.48 to USACE Monument [A-9F] (Detail 6-1);

Thence S23°45'24"W, 65.90 to Camp Rees Mon. #15 (Detail 6-1);

Thence S89°19'15"W, 3284.28 to Camp Rees Mon. #14 (Detail 6-1);

Thence S89°26'21"W, 2652.42 to Camp Rees Mon. #13 (Detail 6-1);

Thence S89°23'45"W, 2650.80 to Camp Rees Mon. #12 (Detail 6-1);

Thence S89°05'20"W, 5238.64 to Camp Rees Mon. #11 (Detail 5-3);

Thence S89°03'12"W, 1776.75 to Camp Rees Mon. #10 (Detail 5-3);

Thence S58°28'38"W, 2069.80 to Camp Rees Mon. #9 (Detail 5-3);

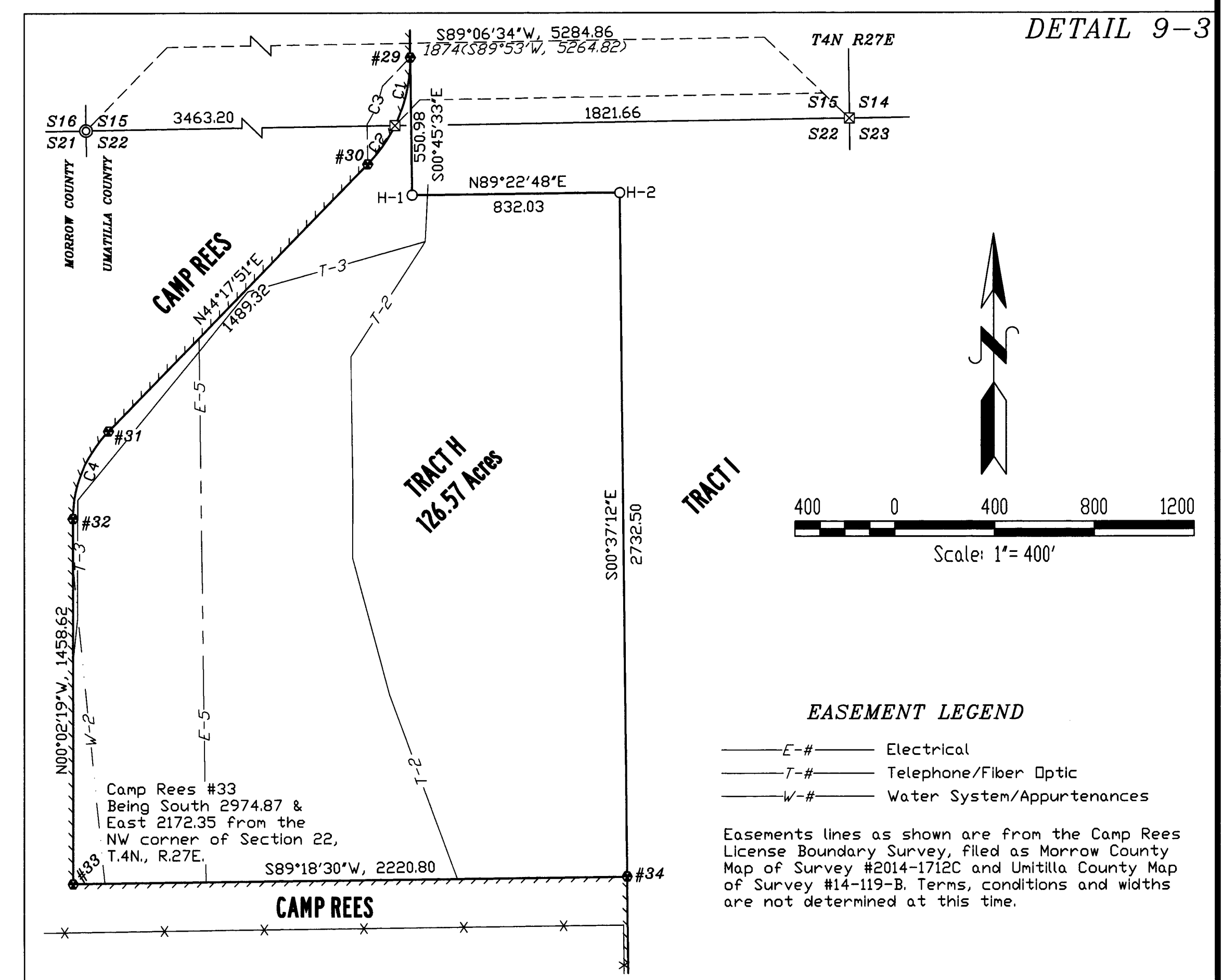
Thence S00°16'19"E, 4235.53 to Camp Rees Mon. #8 (Detail 5-2);

Thence S01°31'38"E, 5378.18 to Camp Rees Mon. #7 (Detail 5-2);

Thence S00°53'11"E, 2646.39 to Camp Rees Mon. #6 (Detail 5-1);

Thence S89°07'00"W, 60.00 to the point of beginning [11-10]

Containing 44.12 Acres



EASEMENT LEGEND

- E-# Electrical
- T-# Telephone/Fiber Optic
- W-# Water System/Appurtenances

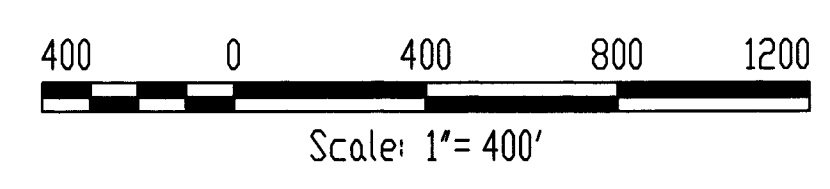
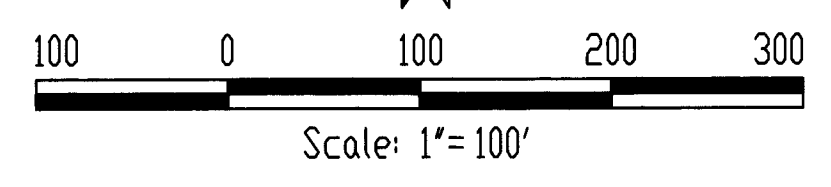
Easements lines as shown are from the Camp Rees License Boundary Survey, filed as Morrow County Map of Survey #2014-1712C and Umatilla County Map of Survey #14-119-B. Terms, conditions and widths are not determined at this time.

RECEIVED BY
Umatilla County Surveyor
Date: 11/21/2016
Rec'd By: [Signature]
No.: 11-018-C

CURVE TABLE

NUMBER	DELTA ANGLE	RADIUS	ARC LENGTH	CHORD DIRECTION	CHORD LENGTH
C1	26°54'30"	600.00	281.78	S12°41'43"W	279.20
C2	18°08'53"	600.00	190.05	N35°13'24"E	189.25
C3	45°03'23"	600.00	471.83	N21°46'09"E	459.77
C4	44°20'10"	500.00	386.91	N22°07'46"E	377.33

REGISTERED PROFESSIONAL LAND SURVEYOR
OREGON
JULY 13, 1999
KENNETH H. DELANO JR.
49865
RENEWS: 1/1/2018



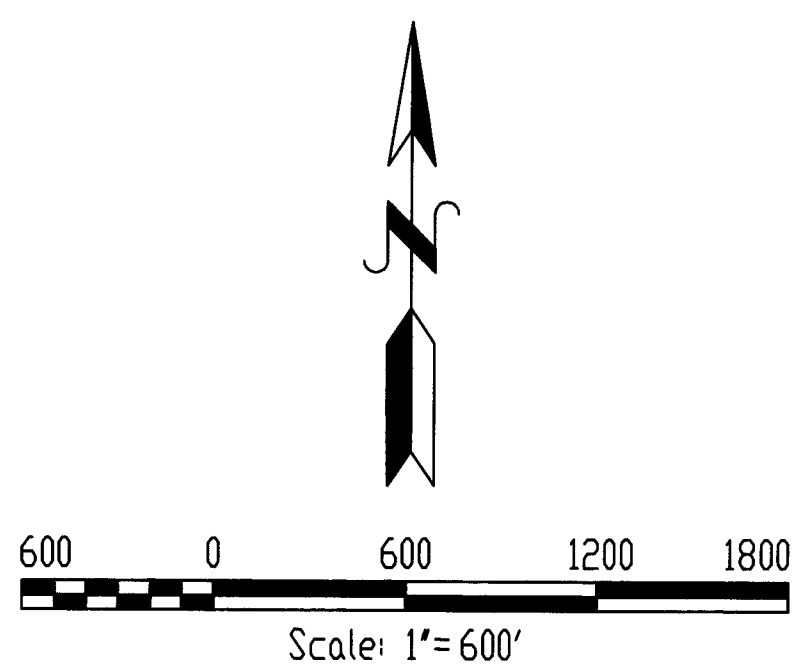
DETAIL 10-1

RECEIVED BY
 Umatilla County Surveyor
 Date: 11/27/2016
 Rec'd By: G. Hensley
 No.: 16-018-C

EASEMENT LEGEND

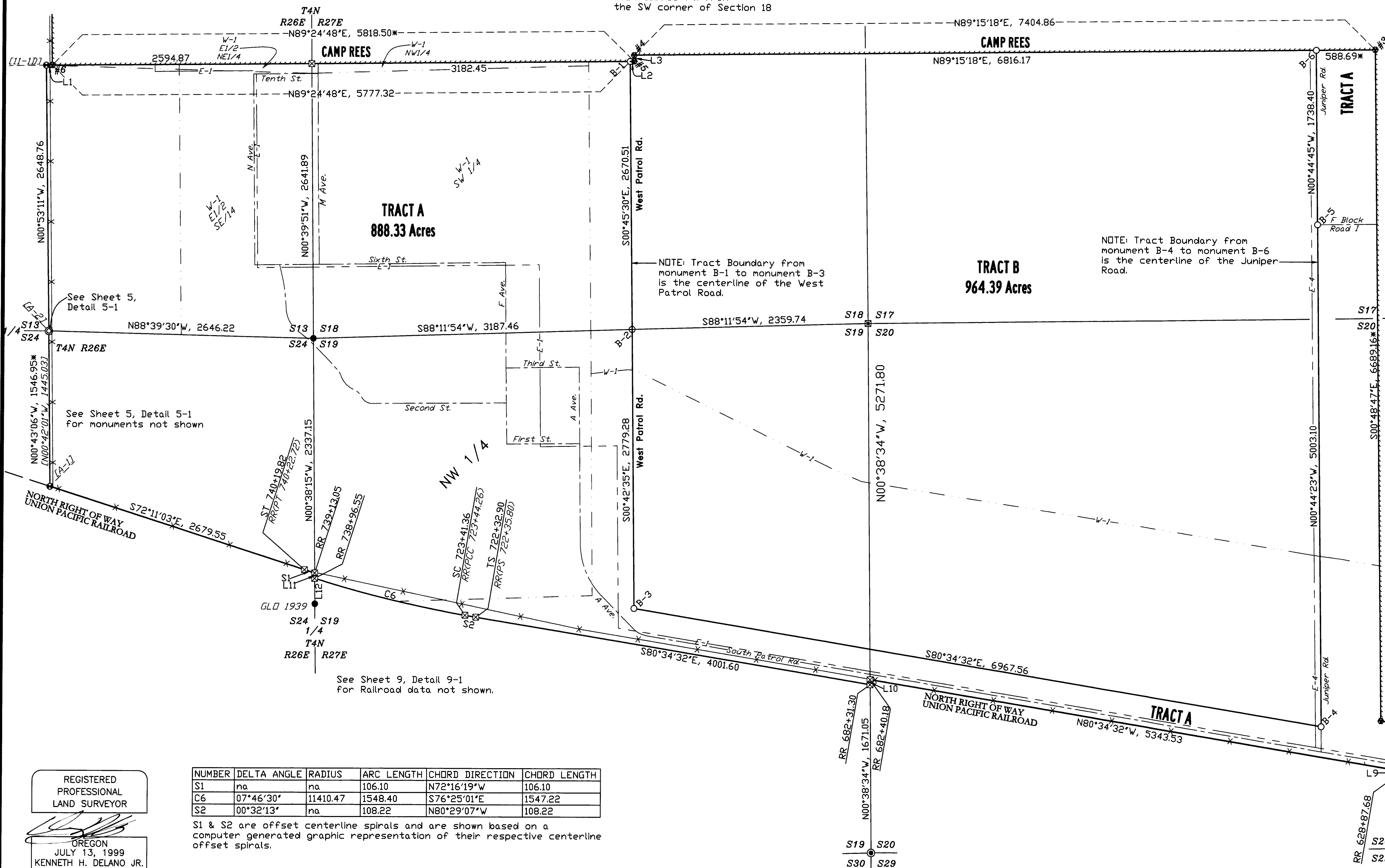
- E—#— Electrical
- W—#— Water System/Appurtenances
- R—#— Road Centerline
- SD— Storm Drain
- SS— Sanitary Sewer
- P—#— Proposed Railroad Spur Line

Easements lines as shown are from the Camp Rees License Boundary Survey, filed as Morrow County Map of Survey #2014-1712C and Umatilla County Map of Survey #14-119-B. Terms, conditions and widths are not determined at this time.



LINE TABLE	
L1	N89°07'00"E, 60.00'
L2	S89°24'48"W, 41.18
L3	S00°39'50"E, 61.64*
L4	S00°51'33"E, 185.85
L5	S00°09'54"W, 183.58
L6	S89°07'56"W, 279.85
L7	N09°25'28"E, 50.00
L8	S09°25'28"W, 50.00
L9	N00°44'26"W, 50.80
L10	S00°38'34"E, 50.78
L11	N00°38'15"W, 52.62
L12	N00°38'15"W, 253.45

NOTE: Monument B-1 is North 2770.49 Ft. & East 3150.56 ft. from the SW corner of Section 18



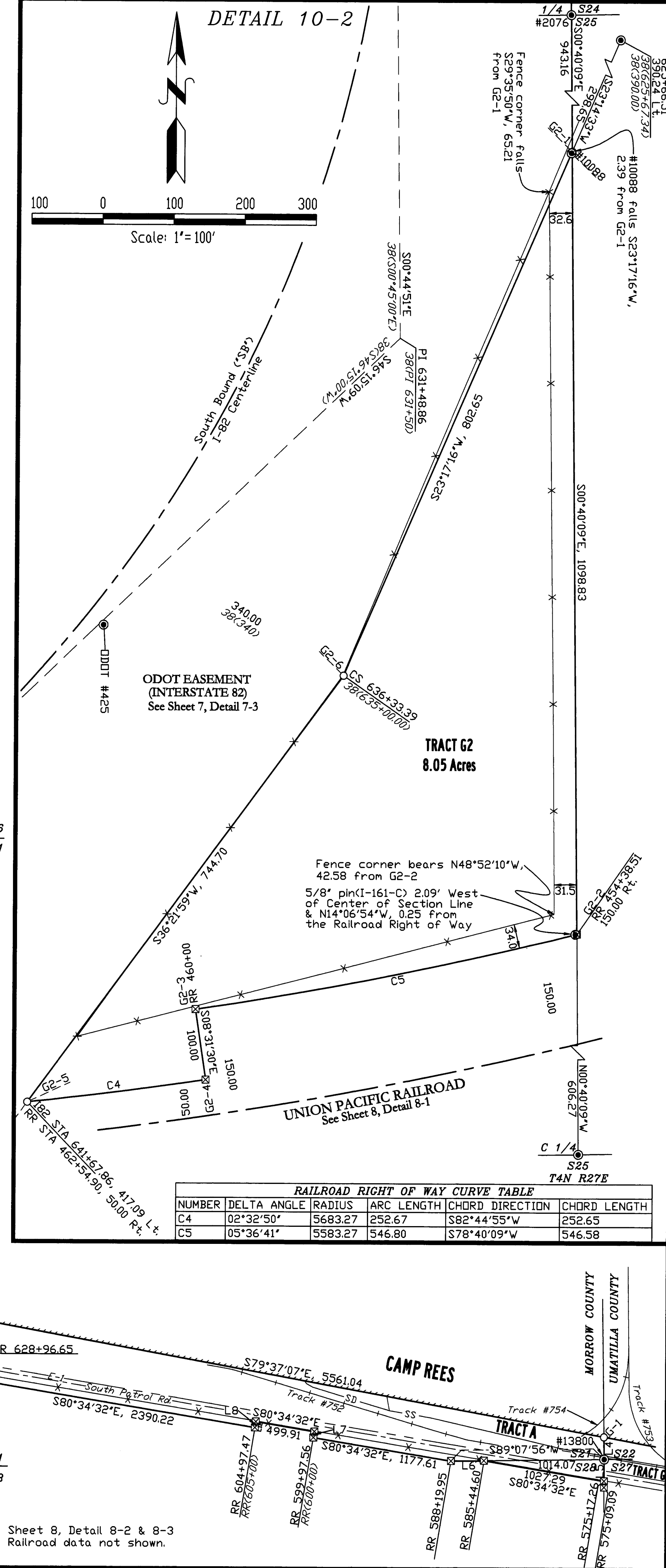
See Sheet 9, Detail 9-1 for Railroad data not shown.

NUMBER	DELTA ANGLE	RADIUS	ARC LENGTH	CHORD DIRECTION	CHORD LENGTH
S1	na	na	106.10	N72°16'19"W	106.10
C6	07°46'30"	11410.47	1548.40	S76°25'01"E	1547.22
S2	00°32'13"	na	108.22	N80°29'07"W	108.22

S1 & S2 are offset centerline spirals and are shown based on a computer generated graphic representation of their respective centerline offset spirals.

REGISTERED PROFESSIONAL LAND SURVEYOR
 OREGON
 JULY 13, 1999
 KENNETH H. DELANO JR.
 49865
 RENEWS: 1/1/2018

DETAIL 10-2



Scale: 1"=100'

RAILROAD RIGHT OF WAY CURVE TABLE					
NUMBER	DELTA ANGLE	RADIUS	ARC LENGTH	CHORD DIRECTION	CHORD LENGTH
C4	02°32'50"	5683.27	252.67	S82°44'55"W	252.65
C5	05°36'41"	5583.27	546.80	S78°40'09"W	546.58

See Sheet 8, Detail 8-2 & 8-3 for Railroad data not shown.

COORDINATE TABLE - FOUND MONUMENTS

ID	Northing	Eastings	Description
A-1	785410.93	8454959.43	USACE MON
A-1A	786106.83	8454950.70	USACE MON
A-1B	786670.52	8454943.64	USACE MON
11-1A	787619.92	8454929.79	USACE MON
11-1B	788281.79	8454919.55	USACE MON
11-1C	788944.11	8454909.30	USACE MON
11-1D	789606.20	8454899.06	USACE MON
11-1E	790267.68	8454888.83	USACE MON
11-1F	790928.34	8454880.23	USACE MON *
11-1G	791589.63	8454878.59	USACE MON
11-1H	792251.94	8454868.36	USACE MON
A-3	792251.94	8454858.12	1/4 S12 & 13 4N 26E GLO BC 1939
A-3A	792511.52	8454851.20	USACE MON
A-3B	792913.59	8454840.48	USACE MON
A-3C	793212.24	8454832.52	USACE MON
A-3H	794898.24	8454787.57	USACE MON
A-3J	796263.29	8454751.18	USACE MON
A-3K	796579.72	8454742.74	USACE MON
A-4	797628.53	8454714.78	1/4 S1 & 12 4N 26E GLO BC 1939
10-1A	798267.31	8454711.75	USACE MON
10-1B	798906.19	8454708.72	USACE MON *
10-1C	799544.75	8454705.68	USACE MON
10-1D	799622.76	8454705.31	USACE MON
10-1E	800128.50	8454702.91	USACE MON
10-1F	800183.46	8454702.65	USACE MON
10-1G	800786.90	8454699.79	USACE MON *
10-1H	800881.06	8454699.34	USACE MON
10-1I	802276.90	8454692.71	USACE MON
10-1L	802750.41	8454690.46	USACE MON
10-2	802975.43	8454689.40	USACE MON
10-2A	802980.10	8454947.04	USACE MON
10-3	802992.20	8455615.10	SC 1/4 S36 5N 26E GLO BC 1915
10-3A	803001.69	8455628.14	USACE MON
10-3B	803011.32	8455695.30	USACE MON *
#1043	803017.63	8457399.32	5/8" REBAR LS 2850
FS&E #2	803036.47	8458294.57	S36 & 31 T5N R26-27E COPPOCK BC
A-6A	803040.35	8458946.89	USACE MON *
A-6B	803049.95	8459601.53	USACE MON *
A-6C	803059.53	8460256.42	USACE MON *
A-6D	803069.33	8460911.71	USACE MON *
#2000	803081.72	8461139.57	5/8" pin with #951 cap
A-6E	803079.07	8461566.54	USACE MON *
A-6F	803088.53	8462221.38	USACE MON *
A-7	803098.24	8462876.44	USACE MON
A-2	803107.92	8463531.29	USACE MON
FS&E #1	803119.79	8463532.72	SC S31 & 32 5N 27E COPPOCK BC
A-2A	803117.92	8464194.34	USACE MON
A-2B	803127.86	8464857.40	USACE MON
A-2C	803137.79	8465520.46	USACE MON
A-3	803147.74	8466183.56	SC 1/4 S32 5N 27E GLO BC 1941
A-3A	803151.09	8466525.53	USACE MON
A-3B	803154.23	8466846.58	USACE MON
A-3C	803160.72	8467509.64	USACE MON
A-4	803166.95	8468145.53	USACE MON
A-8A	803167.21	8468172.74	USACE MON
A-8B	803170.29	8468486.85	USACE MON
A-9	803173.71	8468835.81	SC S32 & 33 5N 27E GLO BC 1941
A-9A	803181.56	8469498.03	USACE MON
A-9B	803185.00	8469788.33	USACE MON
A-9C	803189.41	8470160.33	USACE MON
A-9D	803197.26	8470822.56	USACE MON
A-9E	803205.11	8471484.82	USACE MON
A-9F	803212.96	8472147.05	USACE MON
A-9G	803220.81	8472809.31	USACE MON
A-9H	803225.19	8473178.39	USACE MON
12-1A	803228.67	8473471.55	USACE MON
12-2	803236.52	8474133.81	SC S33 & 34 5N 27E GLO BC 1941
12-2A	803240.83	8474514.13	USACE MON
12-2B	803244.02	8474796.26	USACE MON
12-2C	803251.53	8475458.73	USACE MON
12-2D	803259.03	8476121.10	USACE MON
12-3	803266.53	8476783.55	SC 1/4 S34 5N 27E GLO BC 1941
B-1A	803923.74	8476771.44	USACE MON
B-1B	804275.73	8476764.95	USACE MON
B-1C	804580.92	8476759.32	USACE MON
B-1D	805238.14	8476747.20	USACE MON
B-2	805895.36	8476735.09	CENTER 1/4 S34 5N 27E, USACE MON
B-2A	805900.12	8477196.39	USACE MON
B-2B	805902.20	8477397.79	USACE MON
B-2C	805909.05	8478060.49	USACE MON
B-2D	805915.89	8478723.18	USACE MON
B-3	805922.73	8479385.91	1/4 S34 & S35 5N 27E, USACE MON
19-1A	805930.39	8480047.14	USACE MON
19-1B	805936.94	8480613.55	USACE MON
19-1C	805938.04	8480708.37	USACE MON
19-1D	805945.69	8481369.52	USACE MON
19-1E	805953.35	8482030.78	USACE MON
19-1F	805960.95	8482687.86	USACE MON
19-1G	805968.56	8483345.01	USACE MON
19-1H	805976.16	8484002.02	USACE MON
19-2	805983.77	8484659.16	1/4 S35 & S36 5N 27E, USACE MON
20-1B	805997.99	8485758.36	USACE MON
20-1C	806000.76	8485972.23	USACE MON
20-1D	806009.25	8486628.74	USACE MON
20-2	806017.74	8487285.21	CENTER 1/4 S36 5N 27E, USACE MON
20-2C	804047.76	8487305.25	USACE MON
20-3	803391.05	8487311.94	SC 1/4 S36 5N 27E GLO BC 1941
20-4	803383.71	8486715.88	N 1/4 S1 4N 27E, USACE MON
1-1A	802692.45	8486722.05	USACE MON
1-1C	801335.56	8486734.18	USACE MON
1-1D	800669.83	8486740.13	USACE MON
1-1E	800004.10	8486746.07	USACE MON
1-1F	799338.28	8486752.02	USACE MON
1-1G	798672.85	8486757.74	USACE MON
1-2	798006.83	8486763.92	1/4 S1 & 12 4N 27E, USACE MON
A-11B	796684.07	8486780.33	USACE MON
A-11C	796022.61	8486788.53	USACE MON
A-11D	795361.22	8486796.74	USACE MON
A-11F	794038.24	8486813.15	USACE MON
A-2	792715.42	8486829.55	1/4 S12 & 13 4N 27E, USACE MON

COORDINATE TABLE - FOUND MONUMENTS

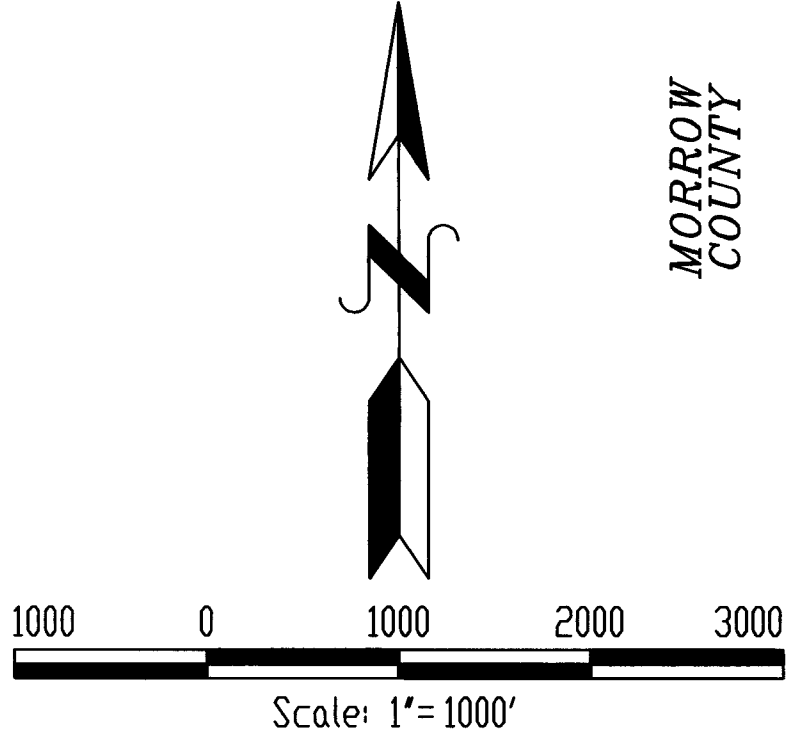
ID	Northing	Eastings	Description
1225	803296.64	8479432.99	SC S34 & 35 5N27E, GLO BC 1941
2004	805867.78	8474084.37	1/4 S33 & 34 5N27E, BRASS CAP
2005	808499.05	8474034.72	S27, S28, S33,S34 5N27E, BRASS CAP
2006	808523.64	8476684.35	1/4 S27 & 34 5N27E, BRASS CAP
2007	808548.23	8479333.82	S26, 27, 34, 35 5N27E, BRASS CAP
2032	808680.11	8489899.63	NE COR. S36, 5N27E, BRASS CAP
2033	806049.73	8489939.52	E1/4 COR. S36, 5N27E, BRASS CAP
2036	803326.60	8482081.56	SC 1/4 S35 5N27E, GLO BC 1941
2046	803413.83	8489410.90	NE COR. S1, 4N27E, GLO BC 1941
2047	803423.47	8489961.41	SE COR. S36, 5N27E, BRASS CAP
2048	800700.76	8489408.73	E1/4 COR. S1, 4N27E, BRASS CAP
2049	798023.47	8489406.58	SE COR. S1, 4N27E, BRASS CAP
2063	813857.20	8484569.78	S23, 24, 25, 26 5N27E, BRASS CAP
2064	795380.57	8489440.18	E1/4 S12, 4N27E, 5/8" REBAR
2066	792738.99	8489476.89	SE COR. S12, 4N27E, BRASS CAP
2067	790094.61	8489507.98	E1/4 S13, 4N27E, GLO BC 1941
2068	790094.98	8489527.79	5/8" REBAR
2069	787452.75	8489524.06	SE COR. S13 4N27E, GLO BC WC
2070	787453.43	8489580.53	SE COR. S13 4N27E, EDWARDS BC WC
2071	784808.84	8489574.47	E1/4 S24, 4N27E, BC NOT LEGIBLE
2072	787422.47	8486896.62	E1/4 S13 & 24 4N27E, BRASS CAP
2073	782166.71	8489808.35	NE COR. S25, 4N27E, NAIL & BRASS WASHER
2074	779524.88	8489642.42	E1/4 S25 4N27E, BRASS CAP
2075	779482.59	8486998.94	C1/4 S25 4N27E, 5/8" IRON PIN
2076	782130.67	8486968.01	1/4 S24 & 25 4N27E, BRASS CAP
2077	779449.51	8484356.01	1/4 S25 & 26 4N27E, 1/2" IRON PIN
2079	781867.96	8468451.27	S20, 21, 28, 29 4N27E, 5/8" REBAR
2080	781798.74	8463189.14	S19, 20, 29, 30 4N27E, BRASS CAP
2081	781611.03	8457645.63	NW COR. S19, 4N27E, BRASS CAP
2082	786895.80	8457585.53	SW COR. S19, 4N27E, GLO BC 1939
2083	779382.66	8479039.02	1/4 S26 & 27 4N27E, BRASS CAP
2119	808380.26	8463449.27	S29, 30, 31, 32 5N27E, BRASS CAP
2131	779306.64	8473740.87	1/4 S27 & 28 4N27E, BRASS CAP
5047	784252.75	8457614.95	W1/4 COR. S19, 4N27E, GLO BC 1939
9040	792179.23	8457524.28	NW COR. S18, 4N27E, GLO BC 1939
9202	813708.44	8468703.50	S20, 21, 28, 29 5N27E, BLM BC
13800	781948.21	8473748.49	S21 S22 S27 S28 4N27E, Umatilla Co. Surveyor Brass Cap

COORDINATE TABLE - MONUMENTS SET THIS SURVEY

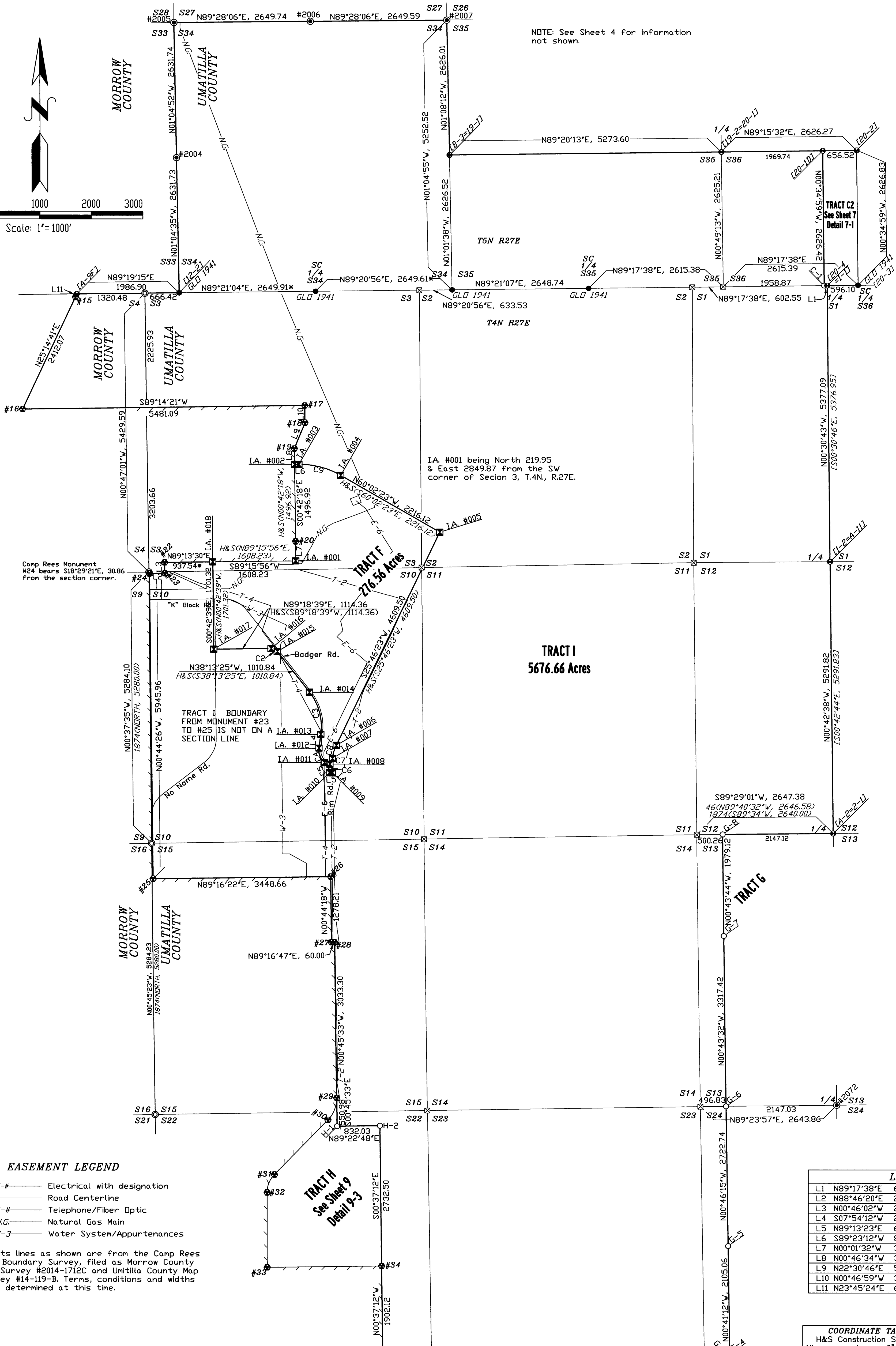
ID	Northing	Eastings	Description
3000	808441.08	8468747.57	S28, 29, 32 & 33 5N27E, Alum. Pipe
3001	808608.01	8464621.34	S25, 26, 35 & 36 5N27E, Alum. Pipe
3002	803228.62	8473467.43	S3 & 4 4N27E, Alum. Pipe
3003	797799.54	8473541.70	S3, 4, 9 & 10 4N27E, Alum. Pipe
3004	792515.76	8473599.47	S9, 10, 15 & 16 4N27E, Alum. Pipe
3005	787231.99	8473669.24	S15, 16, 21 & 22 4N27E, Alum. Pipe
3006	786957.76	8454940.04	1/4 S13 & 24 4N26E, Alum. Pipe
B-1	789666.29	8460736.07	5/8" Rebar pin
B-2	786996.02	8460771.41	5/8" Rebar pin
B-3	784216.95	8460805.84	5/8" Rebar pin
B-4	783076.04	8467679.35	5/8" Rebar pin
B-5	788078.72	8467614.76	5/8" Rebar pin
B-6	789816.98	8467592.13	5/8" Rebar pin
C-1	803382.96	8466655.46	5/8" Rebar pin
D-1	802242.88	8454692.87	5/8" Rebar pin
D-2	802264.43	8454908.67	5/8" Rebar pin
D-3	802497.19	8455288.17	5/8" Rebar pin
D-4	802768.01	8455503.73	5/8" Rebar pin
D-5	802972.00	8455771.85	5/8" Rebar pin
D-6	802996.15	8455854.11	5/8" Rebar pin
D2-1	802041.98	8454693.83	5/8" Rebar pin
D2-2	802069.97	8454974.16	5/8" Rebar pin
D2-3	802345.11	8455422.74	5/8" Rebar pin
D2-4	802623.95	8455644.68	5/8" Rebar pin
D2-5	802790.49	8455863.59	5/8" Rebar pin
D2-6	802935.93	8456358.96	5/8" Rebar pin
D2-7	803005.54	8456422.36	5/8" Rebar pin
G-1	782134.04	8473745.70	5/8" Rebar pin
G-2	782381.92	8478082.81	5/8" Rebar pin
G-3	782471.36	8484712.93	5/8" Rebar pin
G-4	782572.55	8484811.57	5/8" Rebar pin
G-5	784677.46	8484786.34	5/8" Rebar pin
G-6	787399.95	8484749.71	5/8" Rebar pin
G-7	790717.10	8484707.70	5/8" Rebar pin
G-8	792696.07	8484682.52	5/8" Rebar pin
G2-1	781187.57	8486979.03	5/8" Rebar pin
G2-2	780088.81	8486991.86	5/8" Rebar pin
G2-6	780450.31	8486661.70	5/8" Rebar pin
H-1	787007.27	8472008.68	5/8" Rebar pin
H-2	787016.27	8478032.66	5/8" Rebar pin

COORDINATE TABLE CAMP REES MONUMENTS

ID	Northing	Eastings
#1	781443.48	8477515.10
#2	783136.14	8468275.70
#3	789824.63	8468180.77
#4	789728.35	8460776.53
#5	789666.72	8460777.25
#6	789607.13	8454959.05
#7	792253.21	8454918.11
#8	797629.47	8454774.78
#9	801864.96	8454754.67
#10	802947.13	8456519.04
#11	802976.48	8458295.54
#12	803059.79	8463533.52
#13	803087.74	8466184.16
#14	803113.71	8468836.46
#15	803152.64	8472120.50
#16	800970.94	8471091.79
#17	801043.73	8476572.39
#18	800707.94	8476576.98
#19	800205.64	8476368.79
#20	798399.46	8476391.40
#22	797986.19	8473846.01
#23	797776.65	8473848.82
#24	797770.28	8473551.48
#25	791824.81	8473628.34
#26	791868.58	8477076.73
#27	790590.48	8477093.20
#28	790591.23	8477153.19
#29	787558.19	



NOTE: See Sheet 4 for information not shown.



REGISTERED PROFESSIONAL LAND SURVEYOR
OREGON
JULY 13, 1999
KENNETH H. DELANO JR.
49865
RENEWS: 1/1/2018

EASEMENT LEGEND

- E-# — Electrical with designation
- T-# — Road Centerline
- N.G. — Telephone/Fiber Optic
- W-3 — Natural Gas Main
- W-3 — Water System/Appurtenances

Easements lines as shown are from the Camp Rees License Boundary Survey, filed as Morrow County Map of Survey #2014-1712C and Umatilla County Map of Survey #14-119-B. Terms, conditions and widths are not determined at this time.

LINE TABLE	
L1	N89°17'38"E 60.42
L2	N88°46'20"E 297.40
L3	N00°46'02"W 209.56
L4	S07°54'12"W 272.60 H&S(N07°54'12"E, 272.60)
L5	N89°13'23"E 60.00 H&S(S89°13'23"W, 60.00)
L6	S89°23'12"W 83.84 H&S(N89°23'12"E, 83.84)
L7	N00°01'32"W 379.97 H&S(N00°01'32"W, 379.97)
L8	N00°46'34"W 309.40
L9	N22°30'46"E 543.74
L10	N00°46'59"W 335.83
L11	N23°45'24"E 65.90

COORDINATE TABLE - FOUND MONUMENTS

H&S Construction Site Surveyors, Lacey, Washington. All monuments are 3" aluminum capped pipe monuments

ID	Northing	Easting
I.A. #001	798019.49	8476391.57
I.A. #002	799896.26	8476372.98
I.A. #003	799897.16	8476456.82
I.A. #004	799684.29	8477269.77
I.A. #005	798577.56	8479189.75
I.A. #006	794426.60	8477185.51
I.A. #007	794172.83	8477109.90
I.A. #008	794058.71	8477060.88
I.A. #009	793892.13	8477109.89
I.A. #010	793892.13	8477109.89
I.A. #011	794089.36	8476955.53
I.A. #012	794371.36	8476846.47
I.A. #013	794641.37	8476883.95
I.A. #014	795459.79	8476663.94
I.A. #015	796253.91	8476038.50
I.A. #016	796311.09	8475918.86
I.A. #017	796297.68	8474804.58
I.A. #018	797998.87	8474783.47

CURVE DATA				
NUMBER	DELTA ANGLE	RADIUS	ARC LENGTH	CHORD LENGTH
C1	89°54'50"	100.00	156.93	141.32
C2	52°28'01"	150.00	137.36	132.61
H&S	52°28'12"	150.00	137.35	132.61
C3	46°20'39"	1076.85	871.02	847.47
H&S	46°20'24"	1076.85	871.02	847.47
C4	58°04'04"	311.50	315.70	302.36
H&S	58°04'12"	311.50	315.70	302.36
C5	49°24'00"	262.50	226.33	219.38
H&S	49°24'00"	262.50	226.32	219.38
C6	31°14'07"	322.50	175.81	173.64
H&S	37°13'48"	322.50	175.81	173.64
C7	37°08'23"	195.00	126.40	124.20
H&S	37°08'24"	195.00	126.41	124.20
C8	23°57'36"	637.85	266.74	264.80
H&S	23°57'36"	637.85	266.74	264.80
C9	30°34'25"	1593.70	850.42	840.36
H&S	30°34'12"	1593.70	850.41	840.36

RECEIVED BY
Umatilla County Surveyor
Date: 1/27/2016
Rec'd By: G. Hensley
No.: 16-018-C