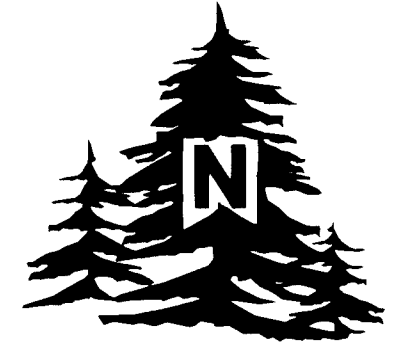


RECORD OF SURVEY



SCALE: 1 INCH=1200 FEET
0 600 1200 2400

MEASURED BEARINGS AND DISTANCES REPORTED ON THIS SURVEY MAP ARE OREGON STATE PLANE GRID BEARINGS AND GRID DISTANCES. POINT NO. 260, THE NE CORNER OF SECTION 9, IS THE PROJECT BASE POINT FOR ROTATION AND TRANSLATION OF THE DRAWING COORDINATES. AT POINT NO. 260, THE COMBINED SCALE AND ELEVATION FACTOR TO COMPUTE AVERAGE GROUND DISTANCES FROM GRID DISTANCES IS 1.00007964934 AND THE CONVERGENCE ANGLE IS 00°50'35.37" CLOCKWISE.

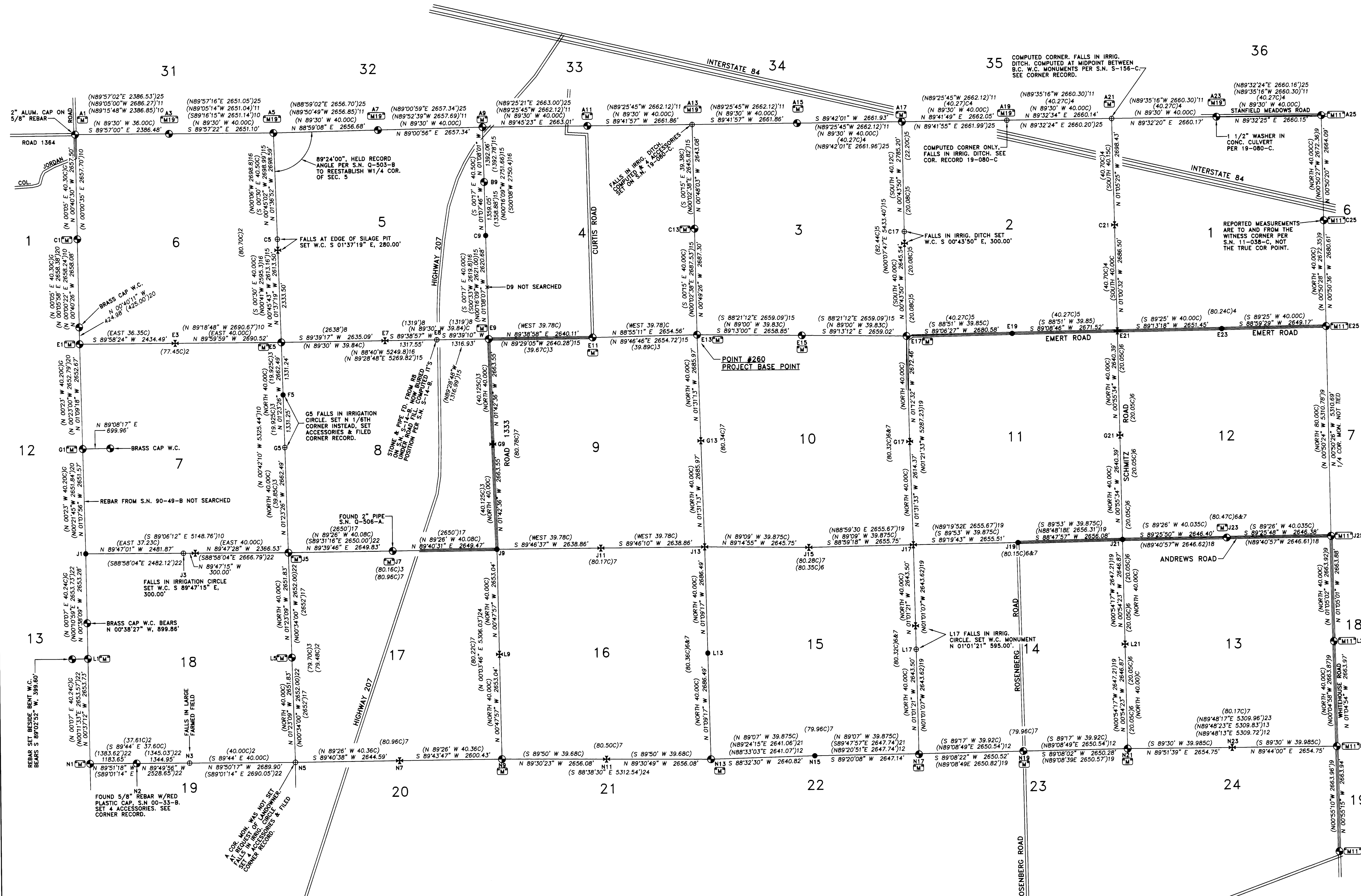
RECORD SURVEY LEGEND

- (XOX) - RECORD DIMENSIONS FOR SURVEY OF NORTH AND EAST LINES OF T3N., R28E., W.M. AND SUBDIVISIONS OF THE TOWNSHIP. DISTANCES IN CHAINS.
(XOX)G - RECORD DIMENSION FOR WEST BOUNDARY OF T3N., R28E., W.M. BY OTIS GOULD, CADASTRAL SURVEYOR UNDER SPECIAL INSTRUCTIONS DATED JANUARY 26, 1938 AND LETTER DATED MAY 18, 1940. DISTANCES IN CHAINS.
(XOX)2 - RECORD DIMENSION FOR SURVEY NO. 198 FOUND IN RECORD OF PRIVATE SURVEYS BOOK. BY JOHN KIMBRELL, 1904.
(XOX)3 - RECORD DIMENSION FOR SURVEY NO. 240 FOUND IN RECORD OF PRIVATE SURVEYS BOOK. BY JOHN KIMBRELL, 1906.
(XOX)4 - RECORD DIMENSION FOR SURVEY NO. 253 FOUND IN RECORD OF PRIVATE SURVEYS BOOK. BY JOHN KIMBRELL, 1907.
(XOX)5 - RECORD DIMENSION FOR SURVEY NO. 258 FOUND IN RECORD OF PRIVATE SURVEYS BOOK. BY JOHN KIMBRELL, 1907.
(XOX)6 - RECORD DIMENSION FOR SURVEY NO. 262 FOUND IN RECORD OF PRIVATE SURVEYS BOOK. BY WILLARD BRADLEY, 1915.
(XOX)7 - RECORD DIMENSION FOR SURVEY NO. 357 FOUND IN RECORD OF PRIVATE SURVEYS BOOK. BY GEARY KIMBRELL, 1915.
(XOX)8 - RECORD DIMENSION FOR SURVEY NO. 408 FOUND IN RECORD OF PRIVATE SURVEYS BOOK. BY WILLARD BRADLEY, 1915.
(XOX)9 - RECORD DIMENSION FOR SURVEY NO. 11-038-C.
(XOX)10 - RECORD DIMENSION FOR SURVEY NO. 13-015-C.
(XOX)11 - RECORD DIMENSION FOR SURVEY NO. S-156-C.
(XOX)12 - RECORD DIMENSION FOR SURVEY NO. H-107-B.
(XOX)13 - RECORD DIMENSION FOR SURVEY NO. 04-057-B & 04-125-B.
(XOX)14 - RECORD DIMENSION FOR SURVEY NO. 91-68-B.
(XOX)15 - RECORD DIMENSION FOR SURVEY NO. S-14-B & S-46-B.
(XOX)16 - RECORD DIMENSION FOR SURVEY NO. Q-503-B.
(XOX)17 - RECORD DIMENSION FOR SURVEY NO. Q-506-A.
(XOX)18 - RECORD DIMENSION FOR SURVEY NO. 08-415-B.
(XOX)19 - RECORD DIMENSION FROM PARTITION PLAT NO. 1997-17.
(XOX)20 - RECORD DIMENSION FOR SURVEY NO. 90-49-B.
(XOX)21 - RECORD DIMENSION FOR SURVEY NO. S-119-B.
(XOX)22 - RECORD DIMENSION FOR SURVEY NO. 00-33-B.
(XOX)23 - RECORD DIMENSION FOR SURVEY NO. 19-011-B.
(XOX)24 - RECORD DIMENSION FOR SURVEY NO. 84-56-B.
(XOX)25 - RECORD DIMENSION FROM SURVEY NO. 19-080-C.
(XOX)26 - I DID NOT USE MEASUREMENTS FROM SURVEY NO. 92-152-B BECAUSE THE DOUBLE PROPORTIONED POSITIONS FOR THE NE AND SE CORNERS OF SECTION 18 HAVE BEEN SUPERSEDED BY EVIDENCE RECOVERED AND USED ON SURVEY NO. 00-33-B.
S.N. - INDICATES "SURVEY NUMBER" OF RECORD SURVEY.
W.C. - INDICATES "WITNESS CORNER".
[M] - CORNER MONUMENT MAINTAINED ON THIS SURVEY. CORNER RECORD FILED SEPARATELY.
[M1] - CORNER MONUMENT MAINTAINED OR REESTABLISHED AND MONUMENTED ON SURVEY NO. 11-038-C. CORNER RECORD PREVIOUSLY FILED.
[M19] - CORNER MONUMENT MAINTAINED OR REESTABLISHED AND MONUMENTED ON SURVEY NO. 19-080-C. CORNER RECORD PREVIOUSLY FILED.
● - SET 5/8" REBAR WITH 2" ALUMINUM CAP. SEE CORNER RECORD FILED SEPARATELY.
* - SET 2 1/2" BRASS CAP ON 1 1/4" GALVANIZED IRON PIPE. SEE CORNER RECORD FILED SEPARATELY.
⊙ - FOUND 2 1/2" BRASS CAP ON GALVANIZED IRON PIPE MONUMENT. UNLESS OTHERWISE NOTED, SEE CORNER RECORD FILED SEPARATELY.
⊕ - COMPUTED POINT.
C - INDICATES MEASUREMENT IN CHAINS.

SEE SHEET 2 OF 2 FOR NARRATIVE & CORNER COORDINATE TABLES.

SHEET 1 OF 2

3N28FINAL 83 2011 E2010



RECEIVED BY
Umatilla County Surveyor
Date: 1/30/24
Rec'd By: CT
No.: 24-004-C

REGISTERED PROFESSIONAL LAND SURVEYOR
OREGON
JASON W. WELLS
RENEWS 6/30/24

WELLS SURVEYING
200 SE HAILEY SUITE 108
P.O. BOX 1696
PENDLETON, OR 97801
PHONE: (541) 276-6362
DATE: 04/23 DR. BY: WRW/JMW
CK. BY: JMW NO: 22-1831

PROJECT:
SURVEY FOR:
UMATILLA COUNTY
3920 WESTGATE
PENDLETON, OREGON
THE NORTH HALF OF
T3N., R28E., W.M.,
UMATILLA COUNTY, OREGON

RECORD OF SURVEY

CURRENT DATUM REALIZATION
 NAD 83(2011) EPOCH 2010.00
 OREGON STATE PLANE COORDINATES
 NORTH ZONE, INTERNATIONAL FOOT UNITS

CORNER I.D.	NORTHING	EASTING	POINT#
A1	771592.089	8489766.937	463
A3	771590.003	8492153.414	461
A5	771587.974	8494804.517	460
A7	771635.014	8497460.775	456
A9	771680.874	8500117.727	437
A11	771691.995	8502780.711	252
A13	771705.376	8505442.538	1015
A15	771719.956	8508104.366	208
A17	771733.886	8510766.261	206
A19	771747.967	8513428.277	1016
A21	771769.190	8516088.334	1017
A23	771790.376	8518748.417	201
A25	771811.935	8521408.484	200
C1	768934.772	848798.245	464
C5	768890.160	8494880.551	1006
B9	770288.882	8500145.266	430
C9	768930.092	8500172.057	432
C13	769063.152	8505479.485	388
C17	768948.911	8510801.773	1026
C21	769071.244	8516139.673	806
C25 WC	769148.127	8521447.493	344
E1	766276.878	8489829.514	530
E3	766278.015	8492264.001	444
E5	766278.004	8494954.520	419
E7	766293.883	8497589.563	1008
E8	766301.950	8498907.084	1007
E9	766309.927	8500223.986	377
E11	766326.083	8502864.044	255
E13	766376.135	8505518.127	260
E15	766339.788	8508176.727	450
E17	766303.586	8510835.504	355
E19	766345.345	8513515.756	540
E21	766385.160	8516186.981	545
E23	766421.181	8518838.185	555
E25	766467.808	8521486.943	210
G1	763624.748	8489882.983	484
G5	764947.150	8494986.827	1013
F5	763616.295	8495019.134	1012
G9	763647.568	8500303.474	1020
G13	763691.113	8505589.384	1031
G17	763631.718	8510891.884	1024
G21	763745.110	8516229.651	1025
J1	760973.697	8489935.382	473
J3	760964.921	8492417.237	1000
J5	760954.586	8495083.747	500
J7	760970.188	8497733.530	491
J9	760985.208	8500382.961	326
J11	760995.478	8503021.802	1030
J13	761006.091	8505660.641	1027
J15	760971.393	8508306.160	400
J17	761018.280	8510961.496	550
J19	761049.400	8513616.827	570
J21	761105.060	8516272.322	564
J23	761131.365	8518918.523	512
J25	761157.686	8521564.840	216
L1	758320.581	8489964.822	483
L5	758303.529	8495147.882	490
L9	758332.422	8500419.966	1021
L13	758320.148	8505714.785	1029
L17	758375.199	8511008.675	1022
L21	758458.521	8516314.188	1023
L25	758494.285	8521615.216	220
N1	755667.008	8489993.534	480
N2	755664.012	8491177.184	482
N3	755660.077	8492522.128	1002
N5	755652.472	8495212.018	1001
N7	755667.373	8497856.566	723
N9	755679.636	8500456.972	320
N11	755656.749	8503112.949	1010
N13	755634.205	8505768.930	330
N15	755701.420	8508408.893	315
N17	755732.118	8511055.853	198
N19	755771.922	8513706.076	379
N21	755811.982	8516356.055	310
N23	755818.433	8519010.792	1019
N25	755830.785	8521665.510	221
P25	753167.187	8521708.321	222

NAD 83/91 ADJUSTMENT
 OREGON STATE PLANE COORDINATES
 NORTH ZONE, INTERNATIONAL FOOT UNITS

CORNER I.D.	NORTHING	EASTING	POINT#
A1	771591.870	8489766.865	463
A3	771589.784	8492153.342	461
A5	771587.755	8494804.445	460
A7	771634.796	8497460.704	456
A9	771680.455	8500117.656	437
A11	771691.777	8502780.640	252
A13	771705.757	8505442.467	1015
A15	771719.737	8508104.294	208
A17	771733.668	8510766.189	206
A19	771747.748	8513428.205	1016
A21	771768.972	8516088.262	1017
A23	771790.376	8518748.345	201
A25	771811.715	8521408.412	200
C1	768934.594	8489798.174	464
C5	768890.242	8494880.480	1006
B9	770288.663	8500145.194	430
C9	768929.873	8500171.985	432
C13	769062.934	8505479.414	388
C17	768948.693	8510801.701	1026
C21	769071.026	8516139.602	806
C25 WC	769147.908	8521447.421	344
E1	766276.659	8489829.442	530
E3	766277.796	8492263.929	444
E5	766277.786	8494954.449	419
E7	766293.664	8497589.492	1008
E8	766301.731	8498907.013	1007
E9	766309.709	8500223.915	377
E11	766325.865	8502863.972	255
E13	766375.916	8505518.056	260
E15	766339.569	8508176.655	450
E17	766303.368	8510835.433	355
E19	766345.126	8513515.684	540
E21	766384.942	8516186.909	545
E23	766420.952	8518838.113	555
E25	766467.589	8521486.871	210
G1	763624.529	8489882.912	484
G5	764946.931	8494986.755	1013
F5	763616.077	8495019.062	1012
G9	763647.349	8500303.402	1020
G13	763690.894	8505589.313	1031
G17	763631.500	8510891.813	1024
G21	763744.892	8516229.580	1025
J1	760973.479	8489935.310	473
J3	760964.103	8492417.165	1000
J5	760954.367	8495083.676	500
J7	760969.969	8497733.459	491
J9	760984.989	8500382.889	326
J11	760995.260	8503021.730	1030
J13	761005.872	8505660.569	1027
J15	760971.174	8508306.089	400
J17	761018.061	8510961.425	550
J19	761049.181	8513616.756	570
J21	761104.842	8516272.250	564
J23	761131.146	8518918.523	512
J25	761157.467	8521564.768	216
L1	758320.363	8489964.750	483
L5	758303.311	8495147.811	490
L9	758332.203	8500419.895	1021
L13	758319.929	8505714.714	1029
L17	758374.980	8511008.603	1022
L21	758458.303	8516314.117	1023
L25	758494.066	8521615.144	220
N1	755666.790	8489993.463	480
N2	755663.794	8491177.112	482
N3	755659.858	8492522.057	1002
N5	755652.254	8495211.946	1001
N7	755667.154	8497856.495	723
N9	755679.417	8500456.900	320
N11	755656.531	8503112.878	1010
N13	755633.986	8505768.858	330
N15	755701.201	8508408.822	315
N17	755731.900	8511055.782	198
N19	755771.704	8513706.004	379
N21	755811.764	8516355.983	310
N23	755818.214	8519010.721	1019
N25	755830.567	8521665.438	221
P25	753166.968	8521708.249	222

NARRATIVE:

THIS SURVEY WAS MADE AT THE REQUEST OF UMATILLA COUNTY TO RECOVER OR REESTABLISH AND MONUMENT MISSING SECTION AND ONE-QUARTER SECTION CORNERS IN THE NORTH HALF OF TOWNSHIP 3 NORTH, RANGE 28 EAST, W.M. THE WORK WAS AUTHORIZED BY THE UMATILLA COUNTY SURVEYOR AND BOARD OF COUNTY COMMISSIONERS AND FUNDED BY THE PUBLIC LAND CORNER MONUMENTATION FUND.

HISTORY OF SURVEYS IN THE PROJECT AREA:

THE NORTH, EAST AND WEST LINES OF TOWNSHIP 3 NORTH, RANGE 28 EAST, W.M., AND THE SUBDIVISIONS OF TOWNSHIP 3 NORTH RANGE 28 EAST, W.M., WERE ORIGINALLY SURVEYED BY N. H. GATES, UNDER CONTRACT NO. 84 DATED JANUARY 31, 1860.

IN 1882, SURVEYS 11A, 12B, 13B AND 14 WERE MADE BY A.L. COFFEY, COUNTY SURVEYOR. THESE SURVEYS WERE REPORTED IN RECORD OF PRIVATE SURVEYS BOOK 1, FOUND IN THE UMATILLA COUNTY SURVEYORS OFFICE. MONUMENTS FOUND OR REESTABLISHED ON THIS GROUP OF SURVEYS WERE ALL WOOD POSTS, AND SURVEY METHODS USED ARE QUESTIONABLE.

BETWEEN 1904 AND 1915, A NUMBER OF PRIVATE SURVEYS WERE MADE BY COUNTY SURVEYORS. THESE SURVEYS ARE REPORTED IN RECORD OF PRIVATE SURVEYS BOOKS 1 AND 2, FOUND IN THE UMATILLA COUNTY SURVEYORS OFFICE. THESE SURVEYS ARE REFERENCED ON SHEET 1 OF 2, AND ARE ALSO REFERENCED IN THE MAINTENANCE AND CORNER RECORD FORMS FILED CONCURRENTLY WITH THIS SURVEY. THESE SURVEYS REPORTED A NUMBER OF "STONES" AND SOMETIMES METAL PIPES SET AT RECOVERED ORIGINAL CORNER POSITIONS OR AT REESTABLISHED SECTION AND ONE-QUARTER SECTION CORNERS. DUE TO EXTENSIVE FARMING IN THE PROJECT AREAS, ONLY A FEW OF THE STONES HAVE BEEN RECOVERED, BUT MOST OF THE CORNERS HAVING A METAL PIPE HAVE BEEN RECOVERED AND REMONUMENTED.

THE WEST LINE OF TOWNSHIP 3 NORTH, RANGE 28 EAST, W.M., WAS RESURVEYED IN 1940 IN A DEPENDENT RESURVEY MADE BY OTIS GOULD, CADASTRAL SURVEYOR, UNDER SPECIAL INSTRUCTIONS DATED JANUARY 26, 1938 AND LETTER DATED MAY 18, 1940. GOULD SET BRASS CAPPED MONUMENTS ON THE WEST LINE OF THE TOWNSHIP IN HIS SURVEY.

EXCEPT FOR THE 1940 GLO RESURVEY OF THE WEST LINE OF THE TOWNSHIP, THERE IS A GAP IN RECORDED SURVEYS BETWEEN 1915 AND ABOUT 1950 WHEN OREGON'S SURVEY RECORDING ACT BEGAN. THERE ARE UNDOUBTEDLY OTHER SURVEYS MADE BY PRIVATE SURVEYORS AND ENGINEERS BETWEEN THE ORIGINAL SURVEYS AND THE BEGINNING OF OREGON'S SURVEY RECORDING ACT IN ABOUT 1950, BUT RECORDS FOR THOSE SURVEYS ARE NOT IN THE PUBLIC RECORD.

THE NORTH AND WEST LINES OF THE TOWNSHIP AND THE SECTIONS LINES WITHIN THE TOWNSHIP HAVE BEEN DEPENDENTLY RESURVEYED IN A NUMBER OF PRIVATE SURVEY REPORTED ON SHEET 1 OF 2 OF THIS SURVEY. THESE PRIVATE SURVEYS HAVE REESTABLISHED AND / OR REMONUMENTED MANY SECTION AND ONE QUARTER SECTION CORNERS.

THE PROJECT AREA HAS BEEN EXTENSIVELY FARMED WITH MANY IRRIGATION CIRCLES INSTALLED IN THE 1980S AND 1990S. IN SEVERAL INSTANCES, LANDOWNERS ASKED US TO NOT REESTABLISH CORNER MONUMENTS IN THE IRRIGATED CIRCLES. IN MANY INSTANCES, THE EXISTING CORNER MONUMENTS DON'T AGREE WELL WITH EXISTING FENCES, WHICH MAY HAVE BEEN CONSTRUCTED FOR CONVENIENCE.

LAND CORNER RECORD FORMS ARE FILED CONCURRENTLY WITH THIS SURVEY MAP, PREPARED FOR EACH SECTION OR ONE-QUARTER SECTION CORNER RECOVERED, REESTABLISHED AND / OR MONUMENTED, UNLESS THE CORNER HAS A CURRENT LAND CORNER RECORD ON FILE. THE CORNER RECORDS SHOULD BE CONSULTED FOR ADDITIONAL INFORMATION FOR EACH CORNER AND THE CORNER ACCESSORIES SET TO REFERENCE THE CORNER MONUMENT.

GPS MEASUREMENTS FOR THIS SURVEY WERE OBSERVED WITH A LEICA GEODETIC GPS RECEIVER CONNECTED TO THE OREGON REAL TIME NETWORK. SURVEY MEASUREMENTS WERE OBSERVED ON THE CURRENT GPS DATUM REALIZATION OF NAD 83(2011) EPOCH 2010.00. NAD 83/91 COORDINATES WERE DETERMINED BY A GLOBAL COORDINATE MOVE OF 0.219 FOOT SOUTH AND 0.072 FOOT WEST, APPLIED AT PROJECT BASE POINT NO. 260. THE GLOBAL COORDINATE MOVE WAS COMPUTED AT NGS STATION STANFIELD EAST BASE RESET, PID RB1421, FROM THE DIFFERENCE BETWEEN THE CURRENT REALIZATION OF NAD 83(2011) EPOCH 2010.00 AND SUPERSEDED NAD 83/91 ADJUSTMENT.

CONTROLLING CORNERS AND NEW CORNER MONUMENT SET ON THIS SURVEY, WERE VERIFIED BY REDUNDANT GPS OBSERVATIONS.

RECEIVED BY
 Umatilla County Surveyor
 Date: 11/30/24
 Rec'd By: CT
 No: 24-004-C

SHEET 2 OF 2

\\JN28\FINAL 83 2011 E2010

REGISTERED PROFESSIONAL LAND SURVEYOR

 OREGON
 NOVEMBER 28, 2010
 JASON M. WELLS
 54657PLS
 RENEWS 6/30/24

WELLS SURVEYING
 200 SE HAILEY SUITE 108
 P.O. BOX 1696
 PENDLETON, OR 97801
 PHONE: (541) 276-6362

DATE: 04/23 DR. BY: wrw/jmw
 CK. BY: jmw NO: 22-1831

PROJECT:
 SURVEY FOR:
 UMATILLA COUNTY
 3920 WESTGATE
 PENDLETON, OREGON
 THE NORTH HALF OF
 T3N, R28E, W.M.
 UMATILLA COUNTY, OREGON