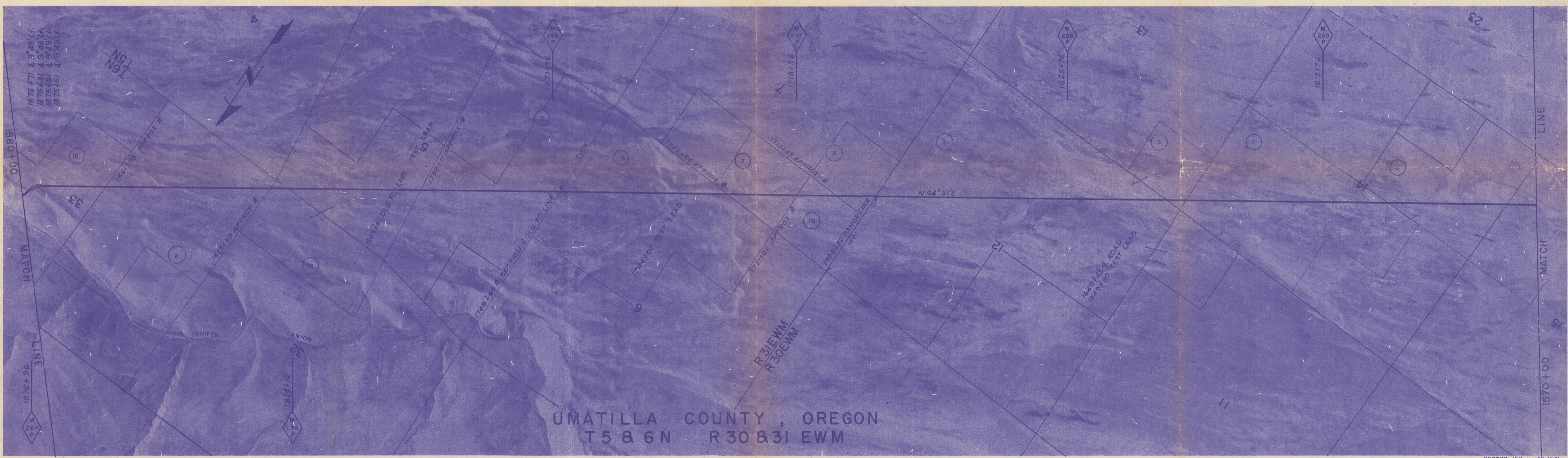


ALIGNMENT DETAILS	% IN PLANT	37.7%							
	% IN FIELD	21.8%							
TEST PRESSURE	MAXIMUM-1249 P.S.I.G. MINIMUM-1010 P.S.I.G.								
COVER-3' (U.O.N.)									
R/W NO.	O-UM-16	O-UM-2	O-UM-16	O-UM-2	O-UM-16	O-UM-2	O-UM-16	O-UM-2	
OWNERSHIP	U.S.A. B. of L.M.	LaVerne E. Pearson, et ux	U.S.A. B. of L.M.	LaVerne E. Pearson, et ux	United States of America, Bureau of Land Management	LaVerne E. Pearson, et ux	U.S.A. B. of L.M.	La Verne E. Pearson, et ux	
ACRES		7.60	7.06	6.46	9.66	3.33		35.95	
FIELDBOOK NO.					UM-4			UM-3	
PAGE NO.					3-6			28-29	
R/W DETAILS	R/W DWG. NO. B-RW-131 (3108)								
TERRAIN SURFACE & VEGETATION	JUNIPER CANYON	PASTURE							



AS BUILT



UMATILLA COUNTY, OREGON
T 5 & 6 N R 30 & 31 E W M

PHOTOS 159 to 162 INCL.

CONSTRUCTION DETAILS	REF. DWGS.	Const Dwg. No. A-CD-106	Typical Dwg. No. A-CD-106	Permit Dwg. No. A-CD-106
	PIPELINE DETAILS	C-2		
PIPE	36" x 0.453" WT API 5LX 52			
COATING	ASPHALT PRIMER, 1/8" ASPHALT ENAMEL, GLASS INNER WRAP, FELT OUTER WRAP (EXCEPT AS NOTED)			

MAINLINE BILL OF MATERIALS STA. 1570+00 TO STA. 1880+00			
0.453" W.T. PIPE	31,000	FT.	CASING, 42" O.D. x 0.344" W.T.
0.531" W.T. PIPE	0	FT.	VENT PIPE, 3" SCHED 40
SINGLE CT. & DBLE. WRAP	31,000	FT.	INSULATORS
DBLE. CT. & DBLE. WRAP	0	FT.	END SEALS
TEST LEADS, C-2	3	EACH	

NOTE: ALL BENDS ARE SMOOTH FIELD BENDS EXCEPT WHERE FACTORY BENDS ARE NOTED.

APPROVED BY	GM
BY DSGN.	
DR. KAYE	
CH. F.E.M.	
OK. A.T.T.	
DATE 5-29-59	
SCALES	1" = 1000' APPROX.

36" PIPELINE
M.P. 263.9 to M.P. 269.8
UMATILLA COUNTY, OREGON

PACIFIC GAS TRANSMISSION COMPANY
SAN FRANCISCO, CALIF.

BECHTEL CORPORATION
AGENT
SAN FRANCISCO CALIF.

BILL OF MATERIAL
SHEET NO. 47 OF 106 SHEETS
DRAWING NUMBER CHANGE
B-AL-1470

Hammor, Jensen & Wallen
MAPPING AND FORESTRY SERVICES
OAKLAND, CALIFORNIA

Q-39C