

# OREGON CORNER RESTORATION FORM

SECTION 7,18 TOWNSHIP 1 NORTH RANGE 29 EAST  
 COUNTY : UMATILLA DATE: JUNE 2007

J-1

CORNER DESIGNATION  
 SECTION CORNER

- CONDITION REPORT ONLY
- NOT FOUND
- RENEWED
- UNCOVERED
- SURVEYED IN
- REFERENCED

PREVIOUS RENEWALS / SURVEYS, ETC.

ORIGINALLY SURVEYED IN 1858 BY THOMPSON UNDER CONTRACT #79. HE SET A POST IN A MOUND OF EARTH.  
 SURVEYED IN 1859 BY THOMPSON UNDER CONTRACT #83. HE SET A POST IN A MOUND OF EARTH.  
 SURVEYED IN 1860 BY CARTEE UNDER CONTRACT #88. HE SET A POST IN A MOUND OF EARTH.

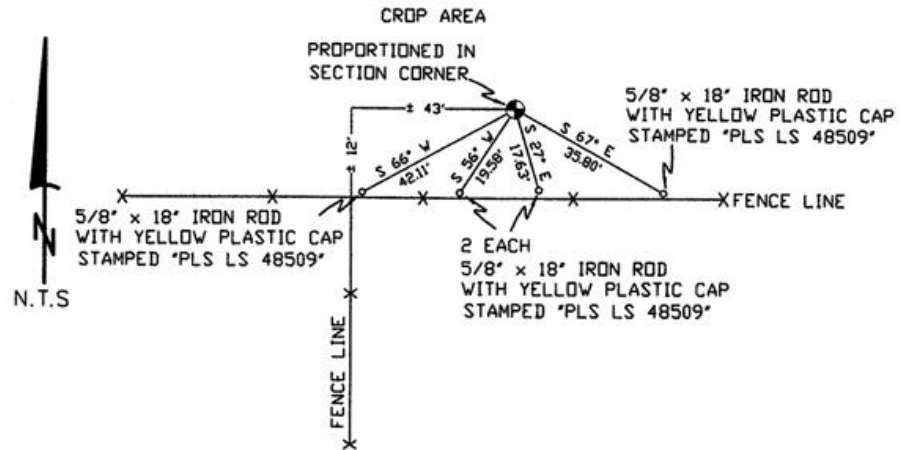
MONUMENTS AND ACCESSORIES FOUND: CONDITION AND SOURCE

NONE

MONUMENT DETAIL



SKETCH



MONUMENT SET ( PROCEDURES AND DESCRIPTION )

SET 2 3/8" BRASS CAP ± 2' BELOW SURFACE  
 SINGLE PROPORTIONED IN FROM FND 2 3/8" B.C. MARKING THE N.W. CORNER OF SECTION 6 AND THE FND ROCK MOUND MARKING THE W 1/4 CORNER OF SECTION 18.

NEW ACCESSORIES FROM WHICH

- A 5/8" x 18" IRON ROD WITH A PLASTIC CAP STAMPED "PLS LS 48509" LIES S 66° W, 42.11 FEET.
- A 5/8" x 18" IRON ROD WITH A PLASTIC CAP STAMPED "PLS LS 48509" LIES S 56° W, 19.58 FEET.
- A 5/8" x 18" IRON ROD WITH A PLASTIC CAP STAMPED "PLS LS 48509" LIES S 27° E, 17.63 FEET.
- A 5/8" x 18" IRON ROD WITH A PLASTIC CAP STAMPED "PLS LS 48509" LIES S 67° E, 35.80 FEET.

LOCATION AND COMMENTS

FROM INTERSECTION OF BUTTER CREEK WITH WEST BOUNDARY OF TOWNSHIP 1 NORTH, RANGE 29 EAST W.M. GO NORTH ± 2.2 MILES TO CORNER

COMPASS DEC.

17° EAST

FIRM/AGENCY

PRIMM LAND SURVEYING  
 1340 N.E. 4TH STREET  
 P.O. BOX 1322  
 HERMISTON, OREGON 97838

PARTY CHIEF

BRIT L. PRIMM

NOTES

WITNESS

CODY L. HANSEN

SURVEYOR'S SEAL

REGISTERED PROFESSIONAL LAND SURVEYOR

*Brit L. Primm*  
 OREGON  
 JULY 13, 1999  
 BRIT L. PRIMM  
 48509

EXPIRATION DATE: 31 JAN 08

07-260-C