

OREGON CORNER RESTORATION FORM

COUNTY: Umatilla. DATE: 02/24/20.

CORNER DESIGNATION: J-19, The North One-Quarter corner of Section 14, Township 1 North, Range 31 East, W.M.

PREVIOUS RENEWALS/SURVEYS ETC: Corner was originally established by Josiah A. Burnett under Contract No. 92 dated September 12, 1860. Notes state: Set a post for 1/4 Sec. Cor., drove charred stake and raised mound with trench as per instructions. John Kimbrell, County Surveyor, in Record of Private Survey No. 274 recovers this corner but does not state what was found.

MONUMENT AND ACCESSORIES FOUND: Found and held 4 1/2' diameter stone mound harmoniously related to the topographic call to the gulch West of the corner.

MONUMENT MARKING DETAIL:

T1N R31E
S11
1/4 -----
S14
2020
54657PLS

MONUMENT SET: At the center of the found stone mound, set a 5/8 by 24" rebar 20" in the stone mound and surrounded with stones. Rebar is capped with a 2" aluminum cap marked as shown in Monument Marking Detail.

New accessories:

A 5/8 by 18" rebar with blue plastic cap marked "Wells Surveying 54657PLS" bears N 06° E, 23.4'.
A 5/8 by 18" rebar with blue plastic cap marked "Wells Surveying 54657PLS" bears S 28° E, 21.2'.
A 5/8 by 18" rebar with blue plastic cap marked "Wells Surveying 54657PLS" bears N 38° W, 23.4'.
A 5/8 by 18" rebar with blue plastic cap marked "Wells Surveying 54657PLS" bears S 67° W, 22.8'.
Wired bearing object signs to each of the rebar accessories. Wired a Witness sign to a rock in the monument mound on the Southwest side of the corner monument. Used steel tape and Brunton pocket transit with 14° East declination to measure accessories.

LOCATION AND COMMENTS: Corner falls on West slope on the East side of a gulch running North-South. There are several old stone fencing mounds North and West of the corner monument.

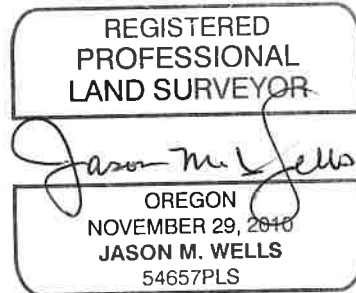
OREGON STATE PLANE COORDINATE, North Zone NAD 83(91), International Feet Units:

N: 699165.39
E: 8611213.25

FIRM: Wells Surveying
P.O. Box 1696
Pendleton, OR 97801

Surveyor's Seal

\1N31J-19



RENEWS: 6/30/20

20-043-C