

OREGON CORNER RESTORATION FORM

Section 1 Township 1N Range 32E
 County Umatilla Date: July 15, 2009

Corner Designation: 1N32E23

Condition Report Only

Not found
 Remonumented
 Unrecorded
 Surveyed in
 Referenced out

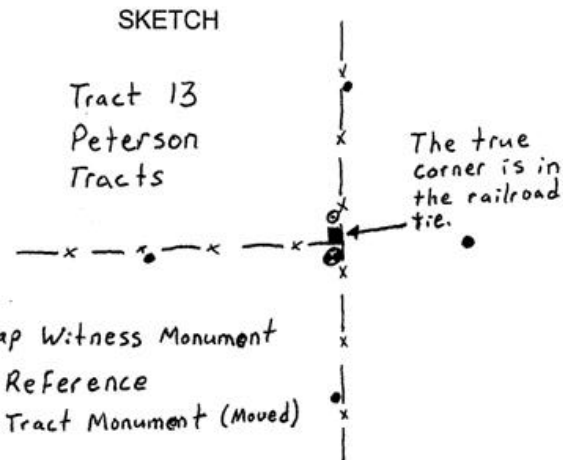
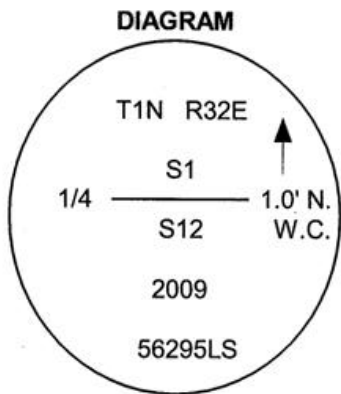
Quarter corner common to sections 1 and 12, T1N, R32E, W.M., Umatilla County, Oregon.

Previous Renewals / Surveys, etc.

Corner originally set by Daniel Chaplin under contract No. 107 dated September 21, 1864. His record reads: Set post for 1/4 sec. corner in mound of earth with charred stake, pits &c as per instructions. Zenas F. Moody under contract No. 164, dated October 4, 1871, stated: Set post. Currin and Noland under special contract dated May 4, 1887, stated: Deposited a charred stake. Don Staebler in survey H-9-B states: Set 1"x30" iron pipe.

Monument and Accessories found: (condition and source)

I found the pipe by Staebler disturbed by the installation of a railroad tie fence post. This was confirmed by ties to other monuments from that survey.



MONUMENT (S) AND ACCESSORIES SET (Procedures and Description)

Because the railroad tie post is at the corner position, I set a 2 1/2" brass cap on a 1 1/2" x 30" galvanized iron pipe S00°39'21"W 1.00 foot from the corner point as a witness monument. The cap is stamped as shown in the diagram above. The State Plane Coordinate given below is of the true corner point, not the witness monument.

For references, I set four 5/8" by 24" iron rebars with 1 1/4" orange plastic caps stamped WTS and 56295LS as described below:

- an iron rebar bears N01°11'03"E, 67.54 feet;
- an iron rebar bears N89°57'22"W, 56.82 feet;
- an iron rebar bears N89°22'14"E, 52.19 feet, 24 inches below the surface of a wheat field;
- an iron rebar bears S00°55'58"W, 55.59 feet;

The monument was set and references were tied using a Trimble R7/R8 RTK GPS system.

Location and comments
 NAD 83/1991 State Plane Coordinate
 Oregon North Zone
 N = 705,077.80 ft
 E = 8,648,555.80 ft

Compass Declination
 Firm / Agency
 Witness Tree Surveying
 Address
 P.O. Box G
 Pilot Rock, Or. 97868
 Party Chief
 Stephen K, Haddock

Surveyors Seal

RECEIVED BY:
 Umatilla County Surveyor
 Date: 6-10
 Rec'd By: KK
 No. 10-93-C

REGISTERED
 PROFESSIONAL
 LAND SURVEYOR

Stephen K. Haddock

OREGON
 JULY 9, 2001
 STEPHEN K. HADDOCK
 56295LS

RENEWAL DATE 6-30-11