

CERTIFIED RECORD OF LAND CORNER MONUMENTATION

T 1N , R 32E. , W.M.

Corner Code No. J-17

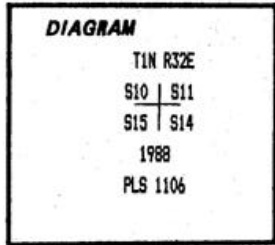
Notes: Monument marked as shown below

History of original corner establishment:

This corner was originally established by Daniel Chaplin, U.S. Deputy Surveyor, under Contract No. 107, dated September 21, 1864. The original notes state that at the corner a wood post with earth mound, charred stake and pits was set for the corner.

In 1871, Z.F. Moody declared the corner lost, reestablished the corner and monumented it with a post and earth mound. This work was done under Contract No. 164, dated October 4, 1871.

In 1938, the corner monument, then a 6 by 7 by 16 inch stone in a mound of stone, was recovered by surveyors of the boundary of the McKay National Wildlife Refuge. See Map No. H-253-8.



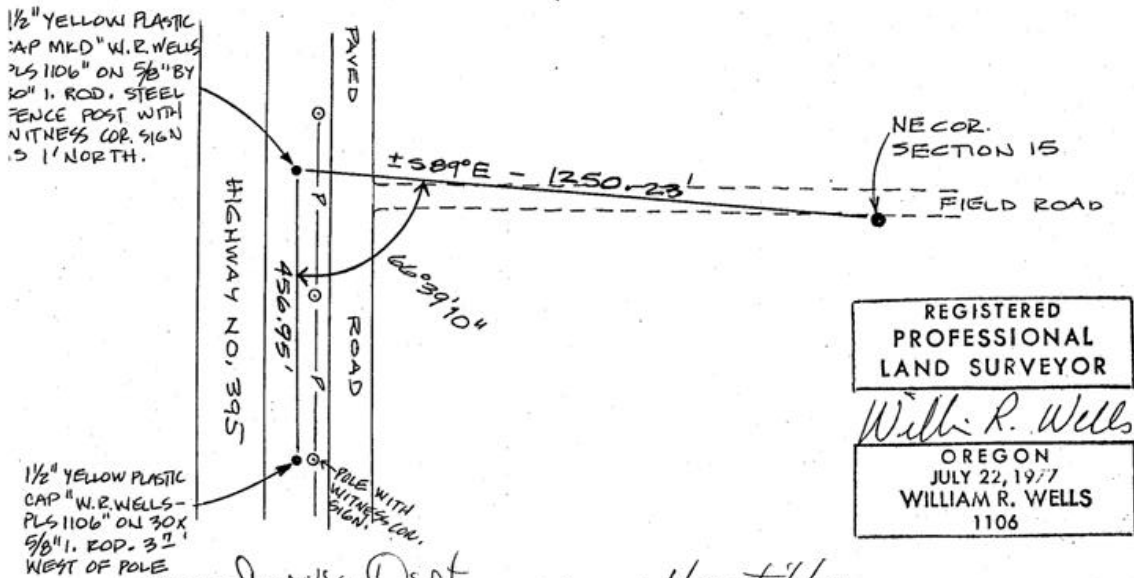
Corner No.
Compass Declination: 19.0

Description of corner evidence found:

None. The corner monument had been destroyed by an east-west field road and farming. However, the corner position was reestablished based on ties to the original monuments found on the McKay National Wildlife Refuge Boundary. The corner was reestablished at a point N89°44'03"W 1641.16' from the monument found at the NW corner of the E1/2 of the W1/2 of the E1/2 of the NW 1/4 of Section 14. The distance of 1641.16' was developed by multiplying the record distance of 1642.08 feet times the average difference between record verses observed distance between the three monuments found on the Refuge Boundary. See Map of Survey recorded separately in County Records.

Description of monument and accessories established to perpetuate the original location of this corner:

At the reestablished corner position, set a 2 1/2" brass cap on a 1 1/2" by 30" galv. iron pipe, with the top of the brass cap buried 14" below the top of an active wheat field. The corner monument is located about 7' south of the centerline of a east-west field road and about 2' south of the north edge of an active wheat field. Because of farming activity around the corner area, reference monuments could not be placed near the corner point. Reference monuments were placed as shown on the sketch below.



REGISTERED
PROFESSIONAL
LAND SURVEYOR

William R. Wells

OREGON
JULY 22, 1977
WILLIAM R. WELLS
1106

Office of Survey Dept. County of Umatilla
State of Oregon, I hereby certify that the within instrument was filed in this office
for record on the 21 day of June 1988
David H. Timberr by Kathleen J. Amshuey
(COUNTY OFFICIAL) (DEPUTY)

RECEIVED BY

Form R6-7100-57 (9/71)

Umatilla County Surveyor
Date 6-88
Rec'd by KJ
No. 88-20-C