

OREGON CORNER RESTORATION FORM

Section 23 Township 1N Range 32E
 County Umatilla Date: May 15, 2002

Corner Designation: 1N32P17 SKH

Condition Report Only
 Not found
 Remonumented
 Unrecorded
 Surveyed in
 Referenced out

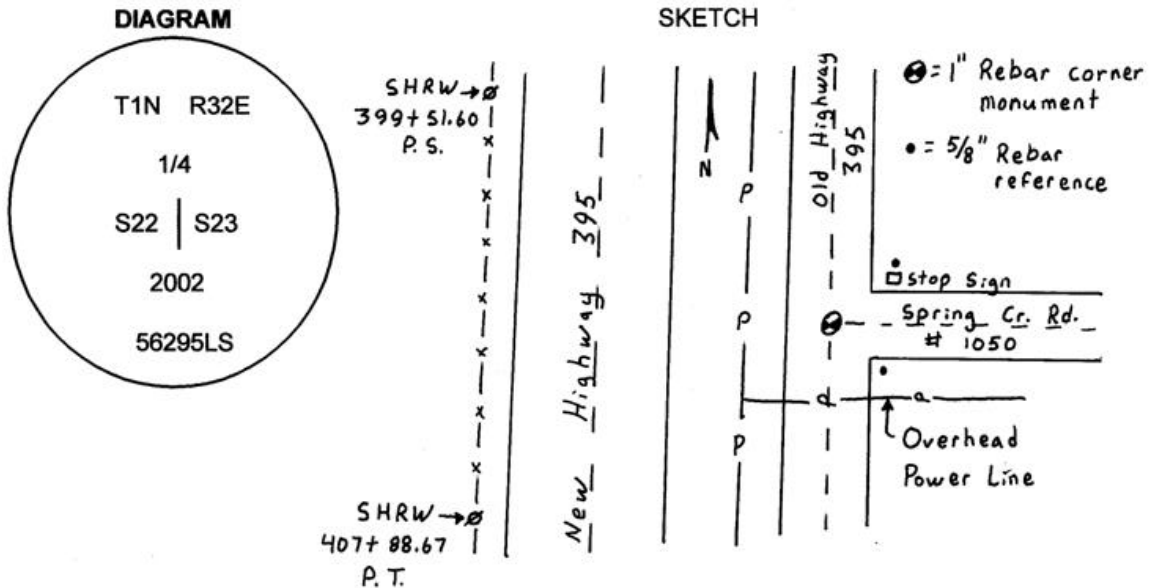
Quarter corner common to sections 22 and 23, T1N, R32E, W.M., Umatilla County, Oregon.

Previous Renewals / Surveys, etc.

Corner originally set by Daniel Chaplin under contract #107 dated September 21, 1864.
 His record reads: Set post for 1/4 sec. cor. in mound of earth with charred stake, pits &c. as per instructions.

Monument and Accessories found: (condition and source)

The intersection of county roads leading N., S., and E. as per the road notes of county roads #484 and #1050.



MONUMENT (S) AND ACCESSORIES SET (Procedures and Description)

Set a 1" x 24" iron rebar in concrete with a 2" aluminum cap stamped as shown in the diagram above at the intersection of county roads #484 and #1050.

For references, I set two 5/8" by 24" iron rebars with 1 1/8" orange plastic caps stamped WTS and 56295LS and used two ODOT right of way monuments set in 1957 as described below:
 an iron rebar bears N52°48'02"E, 47.67 feet approximately 18" north of the stop sign;
 an iron rebar bears S44°10'06"E, 44.24 feet;
 a 3/4" iron pin bears N16°46'02"W, 509.44 feet, the ODOT reference to Station 399+51.56 P.S.;
 a 3/4" iron pin bears S23°45'35"W, 380.34 feet, the ODOT reference to Station 407+88.67 P.T.;

The monument and references were tied using a LIECA system 300 RTK GPS.

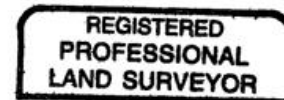
Location and comments

Compass Declination

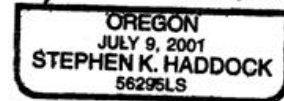
Surveyors Seal

RECEIVED BY:
 Umatilla County Surveyor
 Date: 6-02
 Rec'd By: KK
 No. 02-141-B

Firm / Agency
 Witness Tree Surveying
 Address
 P.O. Box G
 Pilot Rock, Or. 97868
 Party Chief
 Stephen K, Haddock



Stephen K. Haddock



RENEWAL DATE 6-30-03