

E-8

OREGON CORNER RESTORATION FORM

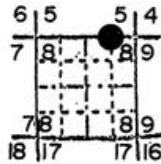
Section 8 Township 1N Range 35E

E-8

County Umatilla Date 1/6/88

Corner Designation

E. 1/16, $\frac{5}{8}$



- Condition Report Only
- Not Found
- Renewed
- Unrecorded
- Surveyed In
- Referenced Out

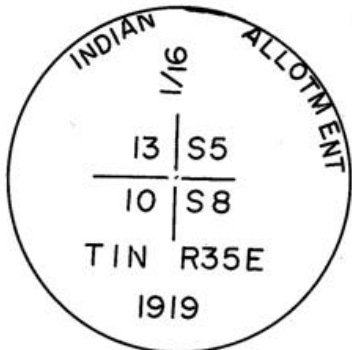
Previous Renewals/Surveys, etc.

Set in Indian Allotment surveys, 1919.

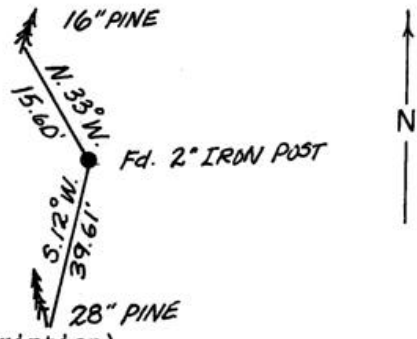
Monument(s) & Accessories Found: (Condition and Source)

Found 2" iron post with brass cap firmly set projecting 13" above ground.

Monument Detail



Sketch



Monument Set (Procedures and Description)

None

New Accessories

28" pine bears S12°W, 39.61' to 2 finish nails side and center marked "E 1/16 S8 BT".

16" pine bears N33°W, 15.60' to 2 finish nails side and center marked "E 1/16 S5 BT".

Set blank orange Carsonite post 2.0' south.

Location & Comments

Drawing not to scale. References by hand compass and steel tape.

Compass Declination 20°E

Firm/Agency Oregon State Parks & Recreation Div.

Address 525 Trade Street SE Salem OR 97310

Party Chief R.Hill

Notes R.Hill

Witness L.Boge, H.Hanson

Seal

REGISTERED
PROFESSIONAL
LAND SURVEYOR

John E. Hollingsworth

OREGON
JULY 9, 1983
JOHN E. HOLLINGSWORTH
691

RECEIVED BY

Umatilla County Surveyor

Date 6-8-88

Rec'd by RA

No. 88-39-B

2