

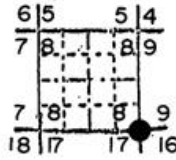
OREGON CORNER RESTORATION FORM

Section 8 Township 1N Range 35E
 County Umatilla Date 12/16/87

Corner Designation

SEC. COR.

8	9
17	16



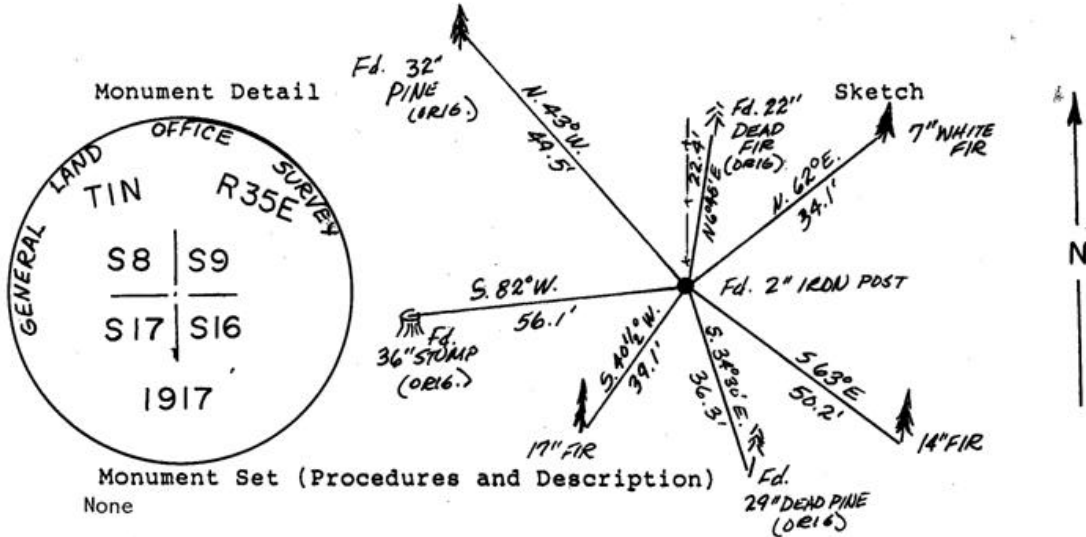
- Condition Report Only
- Not Found
 - Renewed
 - Unrecorded
 - Surveyed In
 - Referenced Out

Previous Renewals/Surveys, etc.

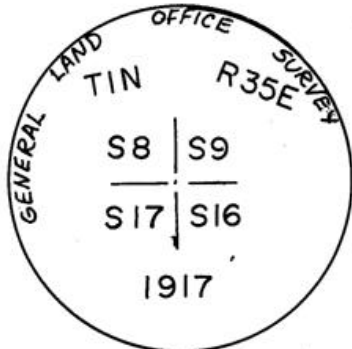
Set by Currin & Noland in 1887, reset from references by L.E. Wilker, 1917.

Monument(s) & Accessories Found: (Condition and Source)

Found 2" iron post with brass cap firmly set projecting 14" above ground from which bears the following original BT's: a 22" dead fir bears N6°45'E, 22.4' to face with healed blaze; a 29" dead pine bears S34°30'E, 36.3' with scribing "16T1NR35E DRBT" visible; a badly decayed 36" stump bears S82°W, 56.1'; a 32" pine bears N43°W, 49.5 ft. to face with scribing "S8R3" and "BT" visible. White post 4"x4" scribed "SHRW" lays NW, 2.4'; old fence runs north out of corner.



Monument Detail



Monument Set (Procedures and Description)
 None

New Accessories

A 7" white fir bears N62°E, 34.1', marked "T1N R35E S9 BT".
 A 14" fir bears S63°E, 50.2', marked "T1N R35E S16 BT".
 A 17" fir bears S40½°W, 39.1', marked "T1N R35E S17 BT".
 Set orange Carsonite post with decal marked "Property Boundary - Oregon State Parks" 2' southeast.

Location & Comments

Drawing not to scale.
 References by hand
 compass and tape.

Compass Declination 20°E

Firm/Agency Oregon State
 Parks & Recreation Div.

Address 525 Trade Street SE
 Salem OR 97310

Party Chief R. Hill
 Notes R. Hill

Witness L. Boge, H. Hanson

Seal

REGISTERED
 PROFESSIONAL
 LAND SURVEYOR

OREGON
 JULY 9, 1905
 JOHN E. HOLLINGSWORTH
 691

RECEIVED BY

Umatilla County Surveyor

Date 1-88

Rec'd by KA

No. 88-39-8

