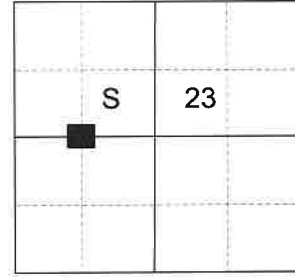


CERTIFIED RECORD OF LAND CORNER MONUMENTATION

HISTORY OF ORIGINAL CORNER ESTABLISHED:

Corner not previously established.

T 1 N R 35 E P-18



DESCRIPTION OF CORNER EVIDENCE FOUND:

None found.

DESCRIPTION OF MONUMENT AND ACCESSORIES I ESTABLISHED TO PERPETUATE THE ORIGINAL LOCATION OF THIS CORNER:

At position by Survey I set a 5/8" x 30" iron pin, 27" in the ground, with 2 1/2" aluminum cap marked as shown below, in mound of stone 1' diam., from which:

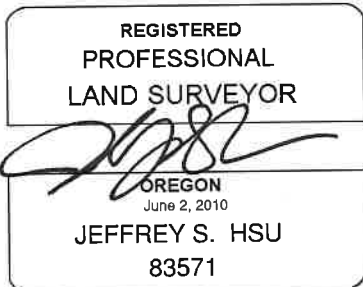
NEW BEARING OBJECTS:

A 5/8" x 30" iron pin bears North 65° East, a dist. of 38.42 ft., with 1 1/2" aluminum cap marked BGB Survey marker NE RP.
A 5/8" x 30" iron pin bears South 77°39' West, a dist. of 30.36 ft., with 1 1/2" aluminum cap marked BGB Survey marker SW RP.

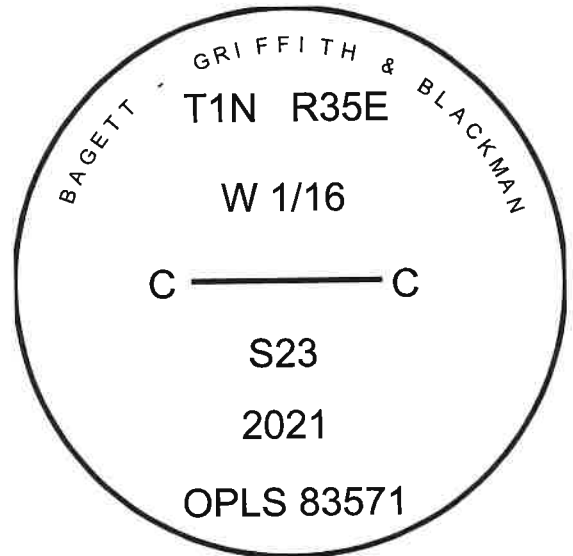
Set steel fence post approx. 0.5 ft. South

I hereby certify that the corner was monumented on September 22, 2021.

Witnesses: Kyle Tucker, Emmitt Ambert



Renewal Date: June 30, 2023



I used a Leica GS14 in the establishment of the accessories. Basis of Bearing is as per Survey for Hancock Forest Management dated September, 2021. Bearing and distance are to the center of aluminum caps.