

U. S. Department of Agriculture  
FOREST SERVICE

*Unsettled* NATIONAL FOREST

CORNERS OF THE PUBLIC SURVEY

T. *1 N* R. *36 E* W Mer.

*14* Corner common to Sections  
*4*, and *9*

Corner consists of a *stone* (not) in place  
State condition

Dimensions above ground \_\_\_\_\_ inches

Sketch grooves, letters, figures, or notches, on proper face or edge.

CARDINAL POSITION

DIAGONAL POSITION

N	W	S	E

NW	SW	SE	NE

Mound of \_\_\_\_\_ is located \_\_\_\_\_

Pits are located \_\_\_\_\_

Sketch markings of Bearing Trees (or Rocks) in proper box and fill blanks below, giving bearings from Corner to Trees and Distances in Links.

<i>BT</i>			

Species *DF*

Diameter *30"*

Bearing \_\_\_\_\_

Distance \_\_\_\_\_

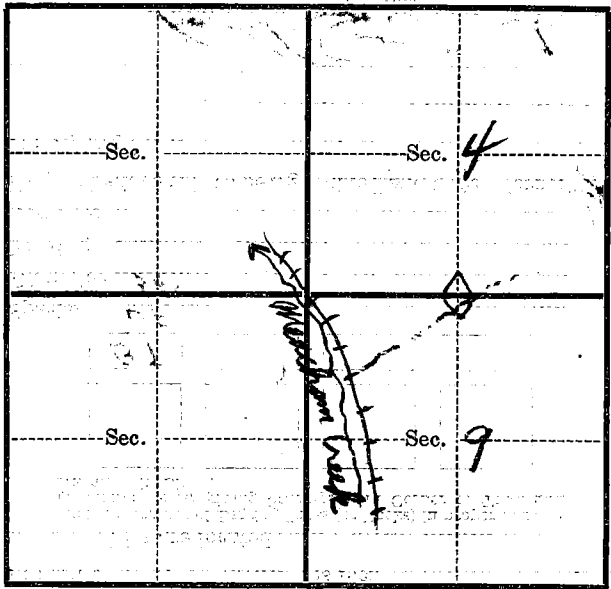
Do you believe this to be a genuine Land Office Corner? *Yes*

If not, why? \_\_\_\_\_

*Paul [Signature]*  
(Signature)  
*P. Ranger*  
(Title)  
*4-7-41*  
(Date)

T. 1 N R. 36 E W Mer.

(Make sketch of topography near Corner)



Metal Location Poster is on a Bearing  
tree ..... inches diameter, on the .....  
side of .....  
from which this Corner bears .....  
..... chains distant.

Give any further facts which will aid in finding this  
Corner again.  
airphoto 9-61

RECEIVED  
MAY 17 1941  
LANDS DEPARTMENT

USDA-FOREST SERVICE

Index  
File No. E-11

CORNER RECORD (SEARCH)

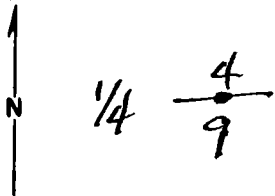
(Ref. FSM 7151.4)

Tract or  
Survey No. \_\_\_\_\_ Cor.  
No. \_\_\_\_\_

T 1N R. 36E R.D. \_\_\_\_\_ County \_\_\_\_\_

Merid. \_\_\_\_\_ N.F. \_\_\_\_\_ State \_\_\_\_\_

CORNER DIAGRAM



DESCRIBE CORNER MONUMENT FOUND

*Brass Cap Set By BLM  
1982*

DESCRIBE BEARING TREES OR OTHER OFFICIAL ACCESSORIES FOUND

PHOTO IDENTIFICATION DATA

Photo No. \_\_\_\_\_

Filed At. \_\_\_\_\_

Object Ident. \_\_\_\_\_

Ident. By \_\_\_\_\_

*Signature*

PLANE COORDINATE POSITION DATA

State \_\_\_\_\_ Zone \_\_\_\_\_

X \_\_\_\_\_

Y \_\_\_\_\_

Estab. By \_\_\_\_\_

*Agency*

Signature

Title

Division

Headquarters

Date

7100-52 (3. 68)

2

3

4

5

USDA-FOREST SERVICE

Index File No. E-11

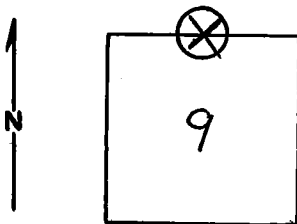
CORNER RECORD (SEARCH)

(Ref. FSM 7151.4)

Tract or Survey No. \_\_\_\_\_ Cor. No. E-11

T 1 N R. 36 E R.D. Pond County \_\_\_\_\_  
 Merid. Willemotta N.F. Umatilla State Oregon

CORNER DIAGRAM



DESCRIBE CORNER MONUMENT FOUND

None

DESCRIBE BEARING TREES OR OTHER OFFICIAL ACCESSORIES FOUND

42" Fir, blazed NE face, scribed 'S' visible inside 2" hole. Tree has very old locustum pattern (FS) on west side, dated 4/7/41

PHOTO IDENTIFICATION DATA

Photo No. \_\_\_\_\_  
 Filed At. \_\_\_\_\_  
 Object Ident. \_\_\_\_\_  
 Ident. By \_\_\_\_\_

*Signature*

PLANE COORDINATE POSITION DATA

State \_\_\_\_\_ Zone \_\_\_\_\_  
 X \_\_\_\_\_  
 Y \_\_\_\_\_  
 Estab. By \_\_\_\_\_

*Agency*

Signature  
Moore

Title  
Eng Tech

Division

Headquarters

Date  
4/6/79

7100-52-(3/68)

CORNER RECORD (PERPETUATION)

MONUMENT: DESCRIBE NEW MONUMENT SET, OR WORK DONE TO PRESERVE EXISTING MONUMENT

ACCESSORIES : DESCRIBE NEW BT'S WITNESS OBJECTS ETC. ESTABLISHED, OR WORK DONE TO PRESERVE EXISTING EVIDENCE

1 placard bearing tran c' attention posters on the B.T.

Work Done By \_\_\_\_\_ Title \_\_\_\_\_ Date \_\_\_\_\_ State Registration No. or Agency \_\_\_\_\_

Certified Cor. Record Prepared? Yes No Filed At: \_\_\_\_\_ Date \_\_\_\_\_

REMARKS

Index File No. T. R. M. Tract or Surv. No. Cor. 13

E-11

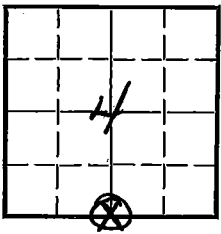
LAND CORNER RECORD

44 5680-2

(Rectangular)

1. T. 1N R. 36E No. E-11 Cor. 1/4 Mer. will State OR. N. F. Uma. Dist. Pend

2. Corner Status



3. Original Description \_\_\_\_\_ Vol. 281 Page 490 Where Recorded BLM.

4. Description of Corners: Besalt stone 16x16x8 11" in ground from which a fir 28" Bvs 550W 135 lbs  
A mound of Stone Alongside

5. Investigation Notes:

Found a Doug Fir 30" with Bt visible in lower blaze

7. Photo Identification

Photo No. \_\_\_\_\_  
Ident. By: \_\_\_\_\_

8. Plane Coordinate Position Data

State \_\_\_\_\_ Zone \_\_\_\_\_  
X \_\_\_\_\_  
Y \_\_\_\_\_  
Estab. By \_\_\_\_\_  
Field Book No. \_\_\_\_\_  
Where Filed \_\_\_\_\_

9. Evaluation

Authentic \_\_\_\_\_  
Needs Verif.  Monument NO  
Re-estab. \_\_\_\_\_ Survey \_\_\_\_\_  
Land Status \_\_\_\_\_

6. Signed H.C. Cuswell Title D.R. Date April 7, 1941 J

PERPETUATION RECORD

10. Monument:

11. Accessories

Field Book \_\_\_\_\_ Page \_\_\_\_\_

12. Set By \_\_\_\_\_ Title \_\_\_\_\_

13. Recorded By \_\_\_\_\_ Volume \_\_\_\_\_ Page \_\_\_\_\_  
(Agency)

License \_\_\_\_\_ Agency \_\_\_\_\_ Date \_\_\_\_\_

(Date) (City) (County) (State)

14. Remarks:

**CORNER RECORD (PERPETUATION)**

**MONUMENT : DESCRIBE NEW MONUMENT SET, OR WORK DONE TO PRESERVE EXISTING MONUMENT**

**ACCESSORIES : DESCRIBE NEW BT's WITNESS OBJECTS ETC. ESTABLISHED, OR WORK DONE TO PRESERVE EXISTING EVIDENCE**

Work Done By \_\_\_\_\_ Title \_\_\_\_\_ Date \_\_\_\_\_ State Registration No. \_\_\_\_\_  
or Agency \_\_\_\_\_

Certified Cor. Record Prepared ? Yes No Filed At: \_\_\_\_\_ Date \_\_\_\_\_

**REMARKS**

Index File No. T. R. M. Tract or Surv. No. Cor.