

**OREGON CORNER RESTORATION FORM**

Section 31 Township 1N Range 31E  
 County Umatilla Date: October 5, 2001

Corner Designation: 1N31Z1

Corner to section 31, T1N, R31E, section 36 T1N, R30E, section 1, T1S, R30 1/2E, and section 6, T1S, R31E, W.M., Umatilla County, Oregon.

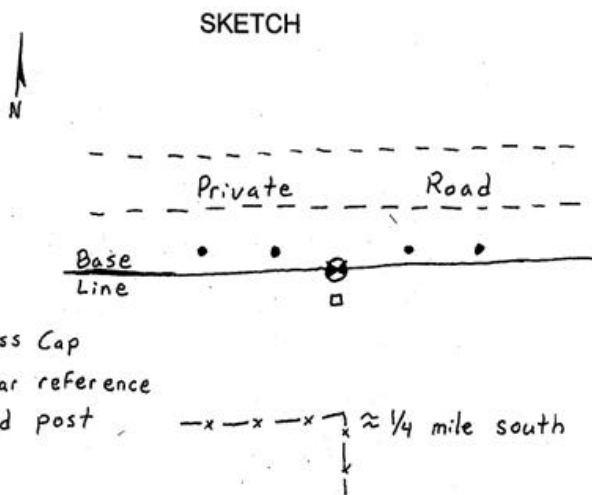
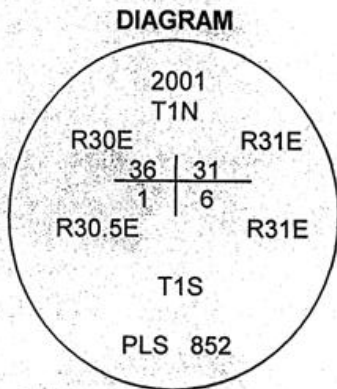
Condition Report Only  
 Not found  
 Remonumented  
 Unrecorded  
 Surveyed in  
 Referenced out

Previous Renewals / Surveys, etc.

The corner was originally set by David P. Thompson under contract No. 79 dated July 26, 1858. His record reads: Set post for corner to Township 1 North, Ranges 30 & 31 East and build a mound of earth as per instructions.

Monument and Accessories found: ( condition and source )

A deposit of decayed wood 18" below the surface at the intersection of the West boundary of Township 1 South with the Westerly projection of the Base Line as determined by the found monuments on the north line of Section 5, T1S, R31E.



**MONUMENT (S) AND ACCESSORIES SET (Procedures and Description)**

At the corner I set a 5/8" x 24" iron rebar with a 1 1/4" red plastic cap 30" below the surface. Over the rebar I set a 30" x 1 1/2" G.I.P. with a 2 1/2" brass cap stamped as shown in the diagram above flush with the surface of the ground. I set a 5' steel guard post with a County monument sign attached along side.

For references, I set four 5/8" by 24" rebars with 1 1/4" red plastic caps stamped ORLS 852, and WALS 13922 as described below:

- an iron rebar bears N78°04'59"E, 45.34 feet, 18" below the surface;
- an iron rebar bears N65°39'45"E, 23.36 feet, 18" below the surface;
- an iron rebar bears N66°25'53"W, 24.93 feet, 18" below the surface;
- an iron rebar bears N79°27'59"W, 48.88 feet, 18" below the surface;

The monument and references were tied using a LIECA SYSTEM 300 RTK GPS.

Location and comments  
 OR SPC Oregon North 1983-91  
 N = 677774.45  
 E = 8587217.16

Compass Declination

Surveyors Seal

RECEIVED BY:  
 Umatilla County Surveyor  
 Date: 12/29/2001  
 Rec'd By: DHK  
 No. 01-206-C

Firm / Agency  
 Haddock Surveying  
 Address  
 P.O. Box 1574  
 Pendleton, Or. 97801  
 Party Chief  
 Stephen K, Haddock



*David L. Haddock*



RENEWS 6-30-03