

OREGON CORNER RESTORATION FORM

C-23

Section 1 Township 1S Range 32E

County Umatilla Date 4-15-92

CORNER DESIGNATION

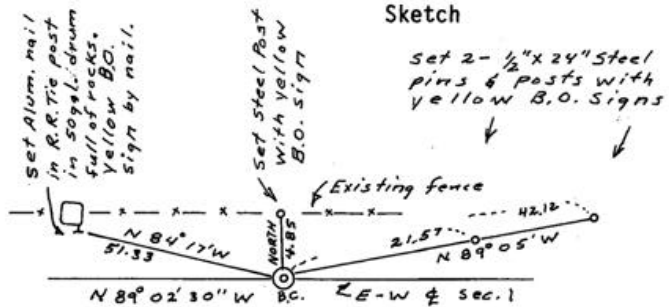
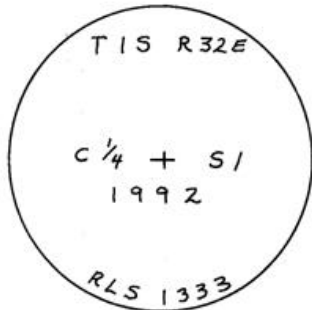
- Condition Report Only
- Not Found
- Renewed
- Unrecorded
- Surveyed In
- Referenced Out

Previous Renewals/Surveys, etc. John Kimbrell in 1899 and again by Macomber in 1901. Possible remaining evidence is very questionable.

Monument(s) & Accessories Found: (Condition and Source)

Found a questionable mound of stone nearby with no marked stone and there are numerous old rock cribs in the vicinity used for old previous fences that ran East-West within 5 ft. of the calculated corner location.

Monument Detail



Monument Set (Procedures and Description)

Set 2 3/8" brass cap on a 1" x 30" G.I.P. w/flare 18" into the rocky ground 5' South of an existing fence. I piled a rock mound around it.

New Accessories

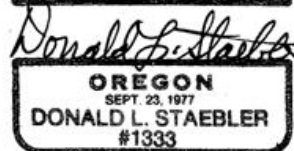
As detailed above, I set two 1/2" x 24" steel pins to the East, a steel fence post to the North, and an aluminum nail in a railroad tie post in a steel 50 gal. barrel full of rock to the West. All accessory points have yellow B.O. signs.

Location & Comments

The B.C. & mound of stone lies 5 ft. South of an existing East-West fence on a rocky hillside.

Compass Declination \_\_\_\_\_  
Firm/Agency Don Staebler  
Engr.-Surveyor \_\_\_\_\_  
Address 1532 SW 41st St.  
Pendleton, OR 97801  
Party Chief Don Staebler

Surveyor's Seal



RECEIVED BY

Umatilla County Surveyor  
Date 4-92  
Rec'd By KE  
No. 92-42-B

Notes \_\_\_\_\_  
Witness \_\_\_\_\_