

OREGON CORNER REFORMATION FORM

Section 17 Township 1S Range 32E
 County Umatilla Date: September 2, 2003

Corner Designation: 1S32L5

Condition Report Only
 Not found
 Remonumented
 Unrecorded
 Surveyed in
 Referenced out

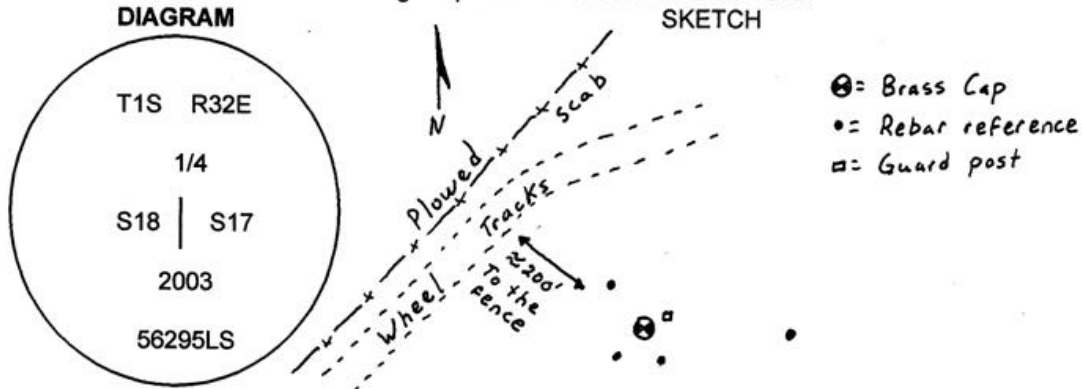
Common quarter corner to sections 17 and 18, T1S, R32E, W.M., Umatilla County, Oregon.

Previous Renewals / Surveys, etc.

Corner originally set by Daniel Chaplin under contract No. 107 dated Sept 21, 1864. His record reads: Set stone, 18 x 6 x 6 for 1/4 Sec. Cor.; Donald Staebler under contract I-2-B dated June 10, 1974. His record reads: Found stone marked 1/4, Set 3/4"square x 30" Iron Pin.

Monument and Accessories found: (condition and source)

I found the original stone, 6 x 6 x 18, plainly marked 1/4 on the W. face and in it's original position. A 1/2" square iron rod was driven alongside. From the appearance of the stones in the mound the monument was not moved from it's original position when the shaft was set.



MONUMENT (S) AND ACCESSORIES SET (Procedures and Description)

I drove the square shaft at the position of the stone into the bedrock. I set a 1 1/2" x 30" galvanized iron pipe with a 2 1/4" brass cap stamped as shown in the diagram above over the square shaft. I set a 5' steel guard post with a county monument sign. I buried the stone at the side of the brass cap.

For references, I set four 5/8" by 24" green coated iron rebars with 1 1/8" orange plastic caps stamped WTS and 56295LS as described below:

- a rebar bears N36°35'47"W, 26.18 feet;
- a rebar bears S42°34'00"W, 20.64 feet;
- a rebar bears S29°23'49"E, 18.69 feet;
- a rebar bears S86°29'00"E, 67.71 feet;

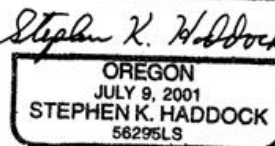
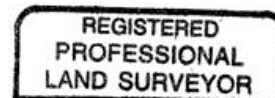
The monument and references were tied using a LIECA system 300 RTK GPS.

Location and comments

NAD 83-91 coordinates from GPS ties to Tri Stations Birch and Alkali.
 N 665035.75'
 E 8624476.71'
 Witnessed by Matt Jensen
RECEIVED BY:
Umatilla County Surveyor
 Date: 3-04
 Rec'd By: KK
 No. 04-70-B

Compass Declination
 Firm / Agency
 Witness Tree Surveying
 Address
 P.O. Box G
 Pilot Rock, Or. 97868
 Party Chief
 Stephen K, Haddock

Surveyors Seal



RENEWAL DATE 6-30-05