

CERTIFIED RECORD OF LAND CORNER MONUMENTATION

History of original corner establishment:

Index: E-17

Cor., Secs. 1 & 12, R33E; and 6 & 7, R34E, of T1S, WM.

Corner originally set by Currin & Nolan in special contract dated May 4, 1887. Their record reads: 80.00 Set a post 4 FT. long, 4 ins. sq., with marked stone, 12 ins. in ground for cor to secs. 2, 3, 10, and 11, marked T.1S., R.33E., S11 on S.E., S10 on S.W. faces, S2 on N.E., S3 on N.W. edges, with 2 notches on E. and 5 notches on S. Dug pits, 18x18x12 ins., N., E., and W., of post, 5 1/2 FT. dist. and raised mound of earth 2 FT. high with 4 1/2 FT. base around post.

DIAGRAM

T1S
R33E
S3 S2

S10 S11
1996
PLS 852

L. E. Wilkes, with Group 29 dated Feb. 20, 1917, remonumented this point, at the proportionate distance for the corner. The location of the true corner was subsequently identified by a Mr. Charles Isaac, a Mr. James A. Isaac, and Mr. John W. Kimbrell (former Umatilla County Surveyor), by affidavits filed on June 16, 1919 and recorded in the G.L.O. notes. The corner was subsequently reset by Mr. Thomas D. Daley also under Group 29 dated May 24, 1919. His record reads: Found a stone 4x4x3 ins., 18 ins. in ground with decayed Gate post at original point as identified by the Isaacs. Set and Iron Post 3 ft. x 2 ins., 24 ins. in ground with a brass cap, from which a basalt stone 11x7x4 ins. bears N14°40'E 36 lks. marked B.O. on the north face.

Description of corner evidence found: There was no remaining evidence of the corner. The corner falls out in a wheat field.

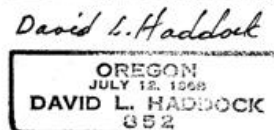
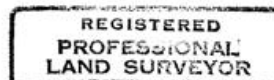
Description of monument and accessories I established to perpetuate the original location of this corner:
The corner was set at the proportionate distance for this corner using the modified form of single proportionate measurement for a boundary proven irregular by previous retracement. At the point I set a 1 1/2" x 30" galvanized iron pipe with 2 1/2" brass cap 18" below the surface of the ground, stamped as shown in the diagram above, from which:

- A 5/8"x24" rebar with 1 1/4" red plastic cap bears S27°55'E, 628.63', stamped ORLS 852 AND WALS 13922.
- A 5/8"x24" rebar with 1 1/4" red plastic cap bears S27°57'W, 632.85', stamped ORLS 852 AND WALS 13922.
- A 5/8"x24" rebar with 1 1/4" red plastic cap bears N33°03'W, 329.41', stamped ORLS 852 AND WALS 13922.
- The top of a pump for irrigation bears S47°11'W, 619.41', U.E.C.A. power pole #1S-33E-020001 bears N35°12'E, 522.16' with a 1 3/8" brass washer stamped ORLS 852 and WALS 13922.

The bearings are based on the surveyed bearing of the section line to the west.

This work was done June 3, 1996 and witnessed by Stephen K. Haddock.

Office of _____ County of _____
State of _____, I hereby certify that the within instrument was filed in this office for record on the _____ day of _____, 19____.
_____ by _____
(COUNTY OFFICIAL) (DEPUTY)



RECEIVED BY
Umatilla County Surveyor
Date 6-96
Rec'd By AK
No. 96-112-C

CORNER DIAGRAM T1S R33E E-17

REGISTERED
PROFESSIONAL
LAND SURVEYOR

David L. Haddock

OREGON
JULY 12, 1968
DAVID L. HADDOCK
852
RENEWS 6-30-97

Mckay Creek Road
U.E.C.A. Power Pole
No. 1S33E-020001

EDGE OF
WHEAT FIELD

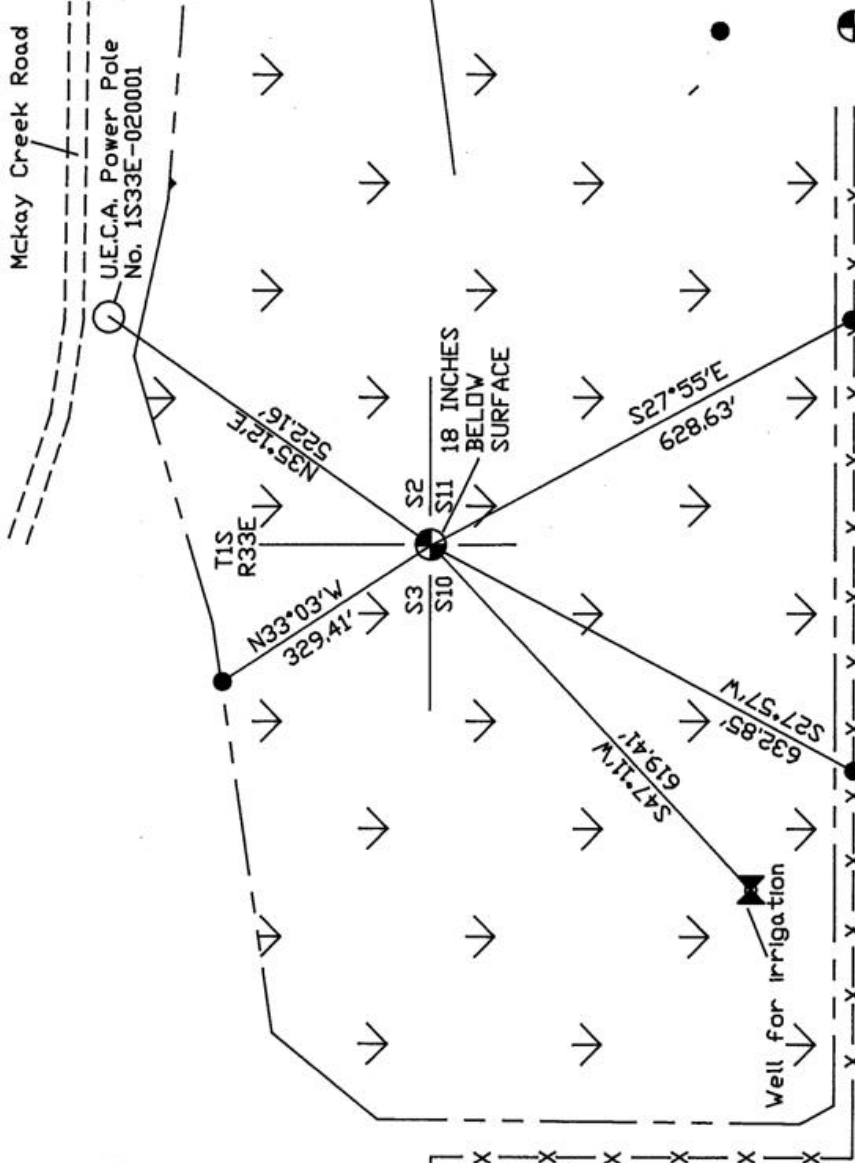
WHEAT FIELD

BEARING OBJECT
1 1/4" RED PLASTIC CAP
ON 5/8"X24" REBAR STAMPED
ORLS 852 AND WALS 13922

SET 2 1/2" BRASS CAP
ON 1 1/2" X 24"
GALVANIZED IRON PIPE



200 0 200
Scale 1"=200'



FENCE

RECEIVED BY

Umatilla County Surveyor

Date

Rec'd by

No. 96-112-C