

**OREGON CORNER RESURVEYING FORM**

Section 3 Township 1S Range 34E  
 County Umatilla Date: July 29, 1997

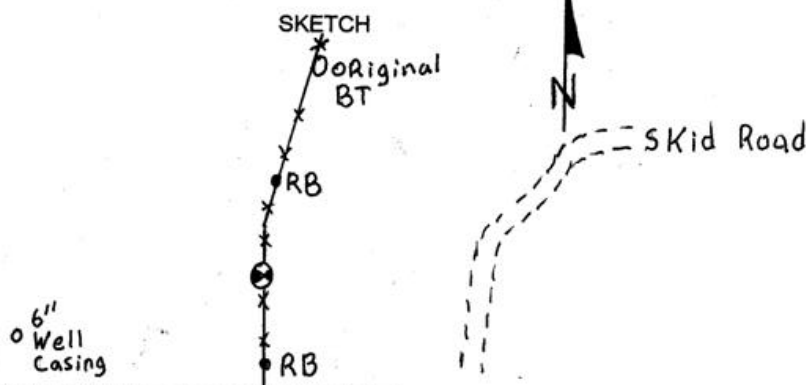
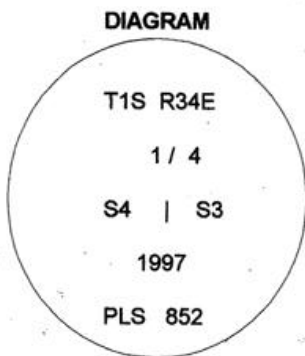
Corner Designation: 1S34C13 Condition Report Only  
 Not found  
 Quarter corner to sections 3 and 4, T1S, R34E W.M. x Remonumented  
 Unrecorded  
 Surveyed in  
x Referenced out

Previous Renewals / Surveys, etc.

Corner originally set by Currin and Nolan under special contract dated May 4, 1887.  
 His record reads: Set post, 3 ft. long, 3 ins. sq., 2 ft. in ground, marked 1/4 S. on W. face, for 1/4 Sec. Cor, from which a pine, 16 ins. diam., bears N. 23°E., 175 lks. dist. marked 1/4 S. B. T.; a pine, 18 ins. diam., bears N.60°W., 218 lks. dist. marked 1/4 S. B. T.

Monument and Accessories found: ( condition and source )

Found remnants of rotted post at corner point from which a 36" Ponderosa Pine bears N23°43'E, 115.72 feet. Opened blaze to reveal scribe 1/4 S. A north-south fence runs over the top of the location.



**MONUMENT (S) AND ACCESSORIES SET (Procedures and Description)**

Set a 1 1/4" x 30" Galvanized Iron Pipe with a 2 1/2" brass cap stamped as shown in the diagram above at the position of the rotten post. The cap is 6" above the surface of the ground with a collar of stone.

For references, I set two 5/8" by 24" rebars with 1.25" red plastic caps stamped ORLS 852 and WALS 13922 as described below:

a rebar bears N19°20'E, 45.06 feet under the existing fence.

a rebar bears S2°27'W, 53.12 feet under the existing fence.

I also tied an existing well described as follows:

A 6" well casing bears S67°20'W, 233.73 feet.

Monument and reference locations were surveyed with theodolite from two GPS control points.

The bearings and distances are true

Location and comments

Compass Declination

Surveyors Seal

Firm / Agency  
 Haddock Surveying  
 Address  
 P.O. Box 1574  
 Pendleton, Or. 97801  
 Party Chief  
 David L. Haddock  
 Witness  
 Stephen K. Haddock

RECEIVED BY:  
 Umatilla County Surveyor  
 Date: 9-97  
 Rec'd By: KK  
 No. 97-173-B

