

OREGON CORNER RESTORATION FORM

Section 10 Township 1S Range 34E
 County Umatilla Date: 11-04-2004

Corner Designation: T1SR34EF16

Condition Report Only
 Not Found
 Remonumented
 Unrecorded
 Surveyed In
 Referenced Out

Previous Renewals / Surveys, etc.
 Umatilla County Survey # 97-173-B

Monument and Accessories Found: (condition and source)

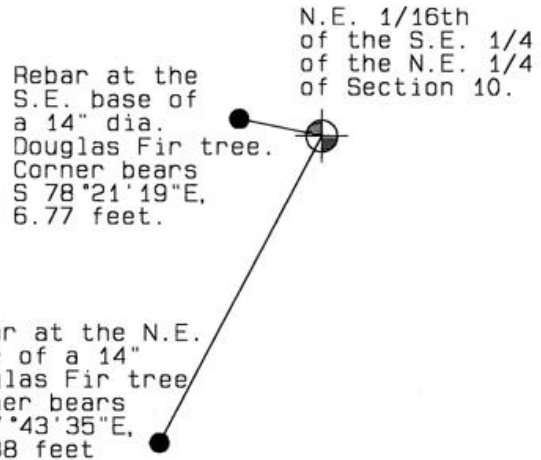
Corner was found a 5/8" dia. rebar with a 1.25" dia. red (faded pink) plastic cap with ORLS 0852 and WALs 13922 stamped in the center. Found a 5' steel t-post in the ground to the south of the corner.
 (see attached photographs)

DIAGRAM



1.25" dia. Red plastic cap

SKETCH



MONUMENT (S) AND ACCESSORIES SET (Procedures and Description)

Set a Umatilla County Sign on the 5' Steel T-post previously set on the south side of the corner..
 (See attached photographs)

REFERENCES SET:

Set two 5/8"x30" iron rebar with a 1.25" dia. red plastic cap stamped WALs 13922 and ORLS 0852.

As shown in sketch above.
 (See attached photographs)

Location and Comments

Compass Declination

Surveyors Seal

From the NC 1/16th corner southwest of the old school and Umatilla County road # 1046 (Ross Road). Proceed east on a bearing of S 89°36'41"E to a distance of 1288 feet along the new posted fence line to the corner.

20°E

REGISTERED
 PROFESSIONAL
 LAND SURVEYOR

RECEIVED BY:

Firm / Agency

David L. Haddock

Date: 1-05
 Rec'd By: KK
 No. 08-04-B

Haddock Surveying
 P. O. Box 1574
 Pendleton, OR 97801
 (541) 276-2174

OREGON
 JULY 12, 1968
 DAVID L. HADDOCK
 852