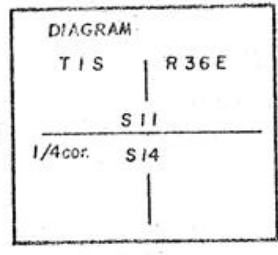


CERTIFIED RECORD OF LAND CORNER MONUMENTATION

History of original corner establishment: Corner established in 1882 by Herman D. Gradon under General Land Office Contract No. 452.

Surveyor General Records (notes) states:  
Set a basalt stone 18 x 8 x 8 ins. 12 ins. in the ground for 1/4 corner marked 1/4 on N face, from which  
A fir 22 in. diam. bears N85°E 32 lks. dist. marked 1/4 S BT.  
A fir 12 in. diam. bears S45°W 19 lks. dist. marked 1/4 S BT.



J-19

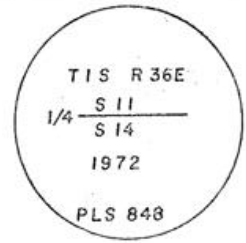
(No subsequent remonumentations in county records)

Description of corner evidence found:

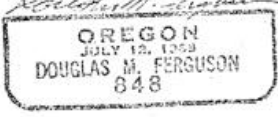
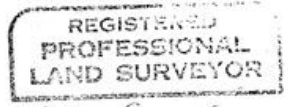
Found 36 in. fir, live in good condition, with scribing visible.  
Established corner position S85°W 21.1 ft. from bearing tree.

Description of monument and accessories established to perpetuate the original location of this corner

Set a 30 in. x 2 1/2 in. iron pipe with 3 in. brass cap marked as shown, 26 in. in the ground, for the 1/4 Sec. Cor. between Sec 11 & 14, from which a new BT-  
A pine 24 in. diam. bears S16°E 45.1 ft. dist. marked T 1 S R 36 E 1/4 S 14 BT  
Distance taken to a brass washer in the blaze of the tree.  
Set a steel fence post approximately 5 ft. East from corner with Forest Boundary sign attached.



Used steel tape and magnetic compass with declination = 20° East.



Office of Surveyor County of Wasatch  
State of Oregon, I hereby certify that the within instrument was filed in this office for record on the 10th day of April; 1972; at 10 o'clock am., (signed)  
Douglas M. Ferguson by Douglas M. Ferguson  
(COUNTY OFFICIAL) (DEPUTY)