

# OREGON CORNER RESTORATION FORM

SECTION 5 TOWNSHIP 1 NORTH RANGE 30 EAST

A-7

COUNTY : UMATILLA

DATE: AUGUST 2007

CORNER DESIGNATION

1/4 CORNER

- CONDITION REPORT ONLY
- NOT FOUND
- RENEWED
- UNCOVERED
- SURVEYED IN
- REFERENCED

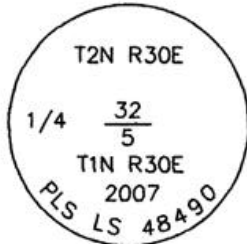
PREVIOUS RENEWALS / SURVEYS, ETC.

ORIGINALLY SURVEYED IN 1858 BY THOMPSON UNDER CONTRACT #79. HE SET A POST IN A MOUND OF EARTH.  
 SURVEYED IN 1859 BY THOMPSON UNDER CONTRACT #83. HE SET A POST IN A MOUND OF EARTH.  
 SURVEYED IN 1860 BY CARTEE UNDER CONTRACT #88. HE SET A POST IN A MOUND OF EARTH.

MONUMENTS AND ACCESSORIES FOUND: CONDITION AND SOURCE

FOUND 1" IRON ROD

MONUMENT DETAIL

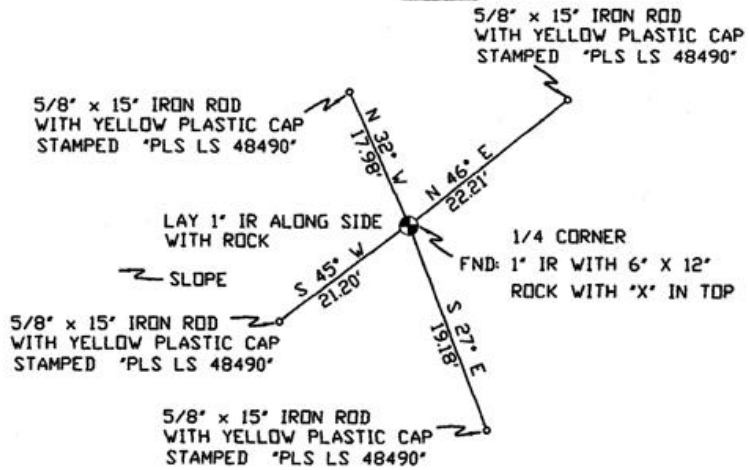


NAD 83/91  
 OREGON STATE PLANE  
 INTERNATIONAL FEET

709117.5329  
 8562949.2643



SKETCH



MONUMENT SET ( PROCEDURES AND DESCRIPTION )

SET 2 3/8" BRASS CAP AT LOCATION OF 1" IRON ROD

NEW ACCESSORIES FROM WHICH

- A 5/8" x 15" IRON ROD WITH A PLASTIC CAP STAMPED "PLS LS 48490" LIES N 32° W, 17.98 FEET.
- A 5/8" x 15" IRON ROD WITH A PLASTIC CAP STAMPED "PLS LS 48490" LIES N 46° E, 22.21 FEET.
- A 5/8" x 15" IRON ROD WITH A PLASTIC CAP STAMPED "PLS LS 48490" LIES S 27° E, 19.18 FEET.
- A 5/8" x 15" IRON ROD WITH A PLASTIC CAP STAMPED "PLS LS 48490" LIES S 45° W, 21.20 FEET.

LOCATION AND COMMENTS

FROM INTERSECTION OF ALKALI CANYON WITH WEST BOUNDARY OF TOWNSHIP 1 NORTH, RANGE 30 EAST W.M. GO NORTH ± 0.7 MILES THEN GO EAST ± 1.5 MILES TO CORNER.

COMPASS DEC.

17° EAST

FIRM/AGENCY

PRIMM LAND SURVEYING  
 1340 N.E. 4TH STREET  
 P.O. BOX 1322  
 HERMISTON, OREGON 97838

PARTY CHIEF

KEITH P. PRIMM

NOTES

WITNESS

BRIT L. PRIMM

SURVEYOR'S SEAL

REGISTERED  
 PROFESSIONAL  
 LAND SURVEYOR

*Keith P. Primm*

OREGON  
 JULY 12, 2005  
 KEITH P. PRIMM  
 48490

EXPIRATION DATE: 31 JAN 08

07-276-C