

OREGON CORNER RESTORATION FORM

COUNTY: Umatilla DATE: 02/21/06

CORNER DESIGNATION: 2N31, G-9, The East One-Quarter Corner of Section 8.

PREVIOUS RENEWALS/SURVEYS ETC.: Corner established by Josiah A. Burnett, under Contract No. 92, dated September 12, 1860. Record states: Set a post for 1/4 Sec. corner, and raised stone mound, as per instructions.

MONUMENT AND ACCESSORIES FOUND: Found and held a old rock jack fence corner in poor shape with fences South and West as best remaining evidence of the original corner point.

MONUMENT MARKING DETAIL:

T2N R31E
 $\frac{1}{4}$
S8|S9
2006
PLS 1106

MONUMENT SET:

At accepted corner position, (approximately 3' North of fence jack), set a 5/8" x 24" rebar with 2" aluminum cap 20" in the ground to bed rock and surrounded with a mound of stone, monument marked as shown in Monument Marking Detail.

From which:

A 5/8" x 24" rebar with 1 1/4" yellow plastic cap marked "OR PLS 1106 WA PLS 17372" bears North 64 1/2° East, 23.6 feet.

A 5/8" x 24" rebar with 1 1/4" yellow plastic cap marked "OR PLS 1106 WA PLS 17372" bears South 75 1/2° East, 33.0 feet.

A 5/8" x 24" rebar with 1 1/4" yellow plastic cap marked "OR PLS 1106 WA PLS 17372" bears South 48 1/2° West, 47.8 feet.

A 5/8" x 24" rebar with 1 1/4" yellow plastic cap marked "OR PLS 1106 WA PLS 17372" bears North 35° West, 14.6 feet.

Attached bearing object signs to all rebar accessories. Nailed witness sign to rock jack 3 feet South of monument.

LOCATION AND COMMENTS: Corner falls on the top of a very rocky ridge spur in a area of rock outcrops.

OREGON STATE PLANE COORDINATE, North Zone, NAD 83(91), International Feet:

N = 733279.44
E = 8597517.76

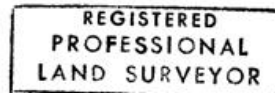
FIRM: William R. Wells, PLS
P.O. Box 1696
Pendleton, OR 97801

COMPASS DECLINATION: 18° East

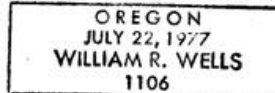
Surveyor's Seal

Witnesses: Jason Wells, LSIT

/2N31G9



William R. Wells



renews 6-30-08

06-462-C