

OREGON CORNER RESTORATION FORM

Section 3 Township 2N Range 32 E.W.M.

County Umatilla Date 2/6/91

CORNER DESIGNATION

Northerly property corner of Lot 18 of Skyline Heights Addition to the City of Pendleton

- Condition Report Only
- Not Found
- Renewed
- Unrecorded
- Surveyed In
- Referenced Out

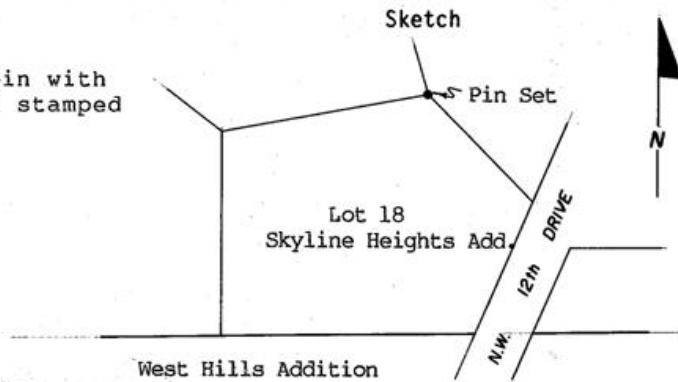
Previous Renewals/Surveys, etc. _____

Monument(s) & Accessories Found: (Condition and Source)

December 1990 - Found 3/8" iron pin. Set reference points for this pin. Pin to be removed due to the construction of new sewer main.

Monument Detail

Set 5/8" x 24" iron pin with aluminum cap attached stamped "City of Pendleton".



Monument Set (Procedures and Description)

Feb. 6, 1991 - Set new 5/8" pin with aluminum cap attached stamped "City of Pendleton". Pin set from reference points set prior to removal of original pin.

New Accessories

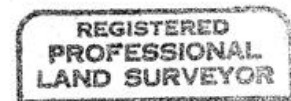
Location & Comments

Pin located at the most northerly point of lot 18 of Skyline Heights Addition to the City of Pendleton Compass Declination _____
Firm/Agency City of Pendleton
Address 34 S.E. Dorion
Pendleton, Ore. 97801

Surveyor's Seal

RECEIVED BY _____
Umatilla County Surveyor
Date 10-92
Rec'd By KE
No. 97-1248

Party Chief Rick B.
Notes _____
Witness Bernard Duby



Richard A. Bordenkircher

