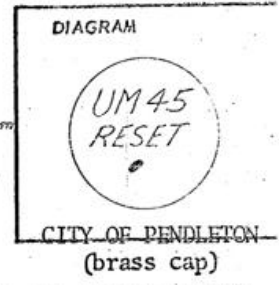


CERTIFIED RECORD OF LAND CORNER MONUMENTATION

History of original corner establishment:

Levee monument - 2 inch iron pipe with cap stamped UM-45. Original survey made by U.S. Army-Corps of Engineers.



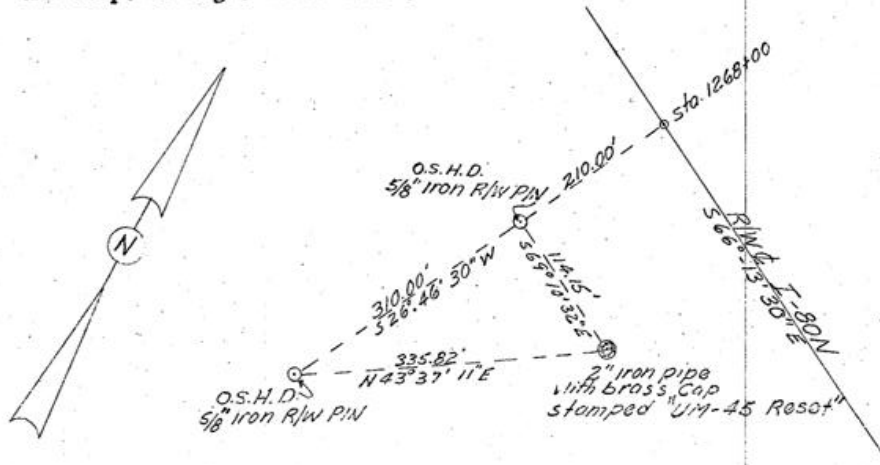
NW 1/4, NE 1/4, Sec 8, T 2N, R 32E

Description of corner evidence found:

2-inch iron pipe with cap stamped UM-45, Pipe approx. 30- inches long.

Description of monument and accessories I established to perpetuate the

original location of this corner Levee monument reset with 2 inch iron pipe - 30 inches long - with brass cap punched and stamped UM-45. Monument referenced to O.S.H.D. right of way pins as shown below. Ties to the OSHD monuments were computed from computed ties between OSHD coord. and and Corp. of Engr. levee coord.



Office of... COUNTY SURVEYOR..... County of... UMATILLA
 State of OREGON, I hereby certify that the within instrument was filed in this office
 for record on the 6 day of FEBRUARY, 1970, at o'clock m., (signed)
Ralph Thompson by
 (COUNTY OFFICIAL) (DEPUTY)

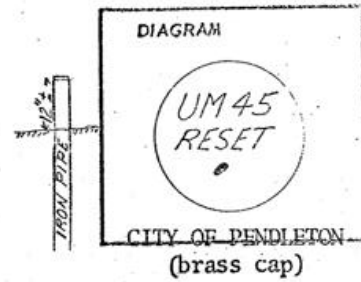
in center of 2N-32-03PE



CERTIFIED RECORD OF LAND CORNER MONUMENTATION

History of original corner establishment:

Levee monument - 2 inch iron pipe with cap stamped UM-45. Original survey made by U.S. Army-Corps of Engineers.

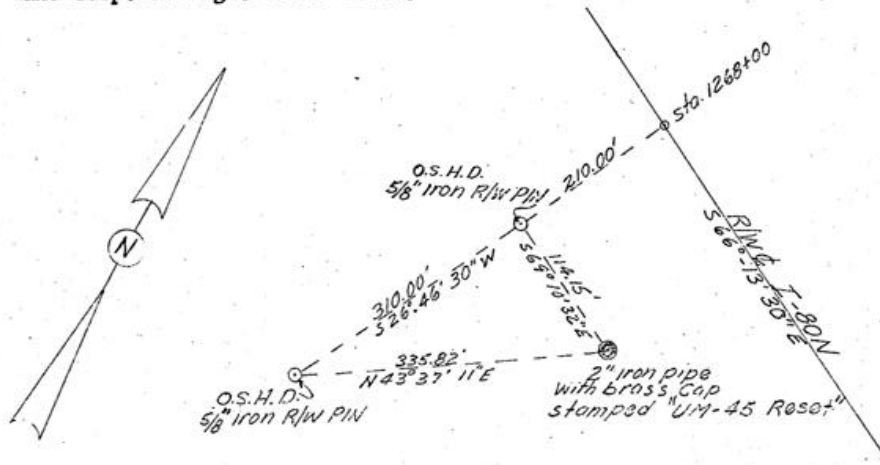


Description of corner evidence found:

2-inch iron pipe with cap stamped UM-45, Pipe approx. 30- inches long.

Description of monument and accessories established to perpetuate the original location of this corner

Levee monument reset with 2 inch iron pipe - 30 inches long - with brass cap punched and stamped UM-45. Monument referenced to O.S.H.D. right of way pins as shown below. Ties to the OSHD monuments were computed from computed ties between OSHD coord. and and Corp. of Engr. levee coord.



Office of..... County of.....
 State of....., I hereby certify that the within instrument was filed in this office
 for record on the day of; 19....., at..... o'clockm., (signed)
 by
 (COUNTY OFFICIAL) (DEPUTY)

